

ZONING	RZP-2022-036 (CC, commercial center)
LOCATION	Approximately located north the intersection of I-485 and Rocky River Road at the southeast corner of Creek Rock Ln and Dutch Creek Dr.

STAFF RESOURCE: John Kinley

REQUEST:

- Shad Spencer with Moore Van Allen on behalf MPV Properties (property owner) is requesting approval of Innovative provisions for a portion of the CC zoned Farmington development associated with petition RZP-2022-036. The overall development is approved for a mix of multifamily and commercial uses. The development is located northeast of the intersection of I-485 and Rocky River Rd. along the Mecklenburg County line. The development is split between City of Charlotte zoning and Town of Harrisburg zoning. The specific parcel requested for Innovative provisions is 10536193, located at the southeast corner of Creek Rock Ln and Dutch Creek Dr.
 1. Reduction of the front setback from 35 feet, measured from ROW to 32 feet measured from the back of curb along Dutch Creek Dr.
 2. Reduction of the front setback from 35 feet, measured from ROW to 30 feet measured from the back of curb along Creek Rock Dr.

STAFF RECOMMENDATION	Staff recommends approval of the Innovative Request.
Rationale:	<ul style="list-style-type: none"> • The parcel is conditionally zoned under the legacy Zoning Ordinance by Petition RZP-2022-036 for CC zoning. Per the approved zoning site plan, the parcel is within Development Area B, which allows commercial use. • The approved zoning plan requires the construction of public and private network required streets. Dutch Creek Dr. and Creek Rock Ln. are network required streets. • The street cross sections included in the approved zoning plan show building edges setback 23 ft from Dutch Creek Dr. and 18 ft from Creek Rock Dr. from the back of curb. The approved zoning plan does not specify a setback for surface parking therefore the base front setback of 35 ft measured from the right-of-way applies since there are no buildings on the parcel. • Conditional note 6.b. states that a setback per CC zoning will be provided and that the petitioner reserves the right to reduce the setback to 16 ft measured from back of curb per Section 11.405 of the 2021 legacy Zoning Ordinance. • Section 11.405(7) allows Planning staff to approve reduced setbacks if the criteria are met. Because there are no buildings proposed for the parcel staff is unable to reduce the setback. • The applicants are requesting a setback of 32 ft from back of curb along Dutch Creek and 30 ft from back of curb along Creek Rock. • According to Section 11.405 the Zoning Committee may approve reduction of the setback if the development provides high quality design and innovative arrangement of buildings and open space. • Therefore, staff recommended the applicants provide high quality design of open space between the sidewalk and the proposed parking that enhances the pedestrian environment and screens the parking from the streets. • As a condition of the Innovative request the applicants commit to provide the following enhancements that go above and beyond Ordinance standards:

- A landscape area varying 10' to 16' in width behind the 8' planting strip and 8' sidewalk along Dutch Creek Dr. resulting in a setback of 32' measured from back of curb.
- A landscape area 12' in width behind the 8' planting strip and 10' sidewalk along Creek Rock Ln. resulting in a setback of 30' from back of curb.
- Second row of trees behind the sidewalk, in addition to required street trees within the planting strip.
- Enhanced paving materials provided to delineate the pedestrian crossing on Dutch Creek Dr. between the parking on the subject parcel and the retail building located on the west side of Dutch Creek Dr.
- Permanent seating along sidewalks.
- Open space elements and trellises along the frontages.
- Enhanced parking lot screening that includes both low screen walls and varying types of screening shrubs.

Ordinance references:

Section 11.405. Development standards. All uses and structures in the CC district shall meet the development standards established in Section 11.407 of this Part, and the following:

(2) All principal buildings and structures located within the project area shall meet a minimum setback of 35 feet, a minimum side yard, and a minimum rear yard of 25 feet from any exterior property line. This minimum setback may be decreased under the prescribed conditions enumerated in subsection (7) below and approved by the Charlotte-Mecklenburg Planning Department staff. (Petition No. 2012-020, § 11.405(2), 05/14/2012) As long as the setbacks for principal buildings and structures are decreased as described in subsection (7), the setback for accessory parking may also be decreased accordingly. However, the accessory parking must remain behind the established building setback. All uses and structures may be considered by the Planning Commission for the innovative development options of subsection (3)(b) below.

(b) In order to encourage high quality design and innovative arrangement of buildings and open space throughout the residential area(s), substantial flexibility from the conventional standards is possible by modifying the following standards established in these regulations and the Subdivision Ordinance:

5. Setbacks and yards.

(7) The minimum setback of 35 feet as prescribed in subsection (2) above may be reduced to 14 feet from the back of the existing or proposed future curb, whichever is larger as determined by the Charlotte-Mecklenburg Planning Department staff and the Charlotte Department of Transportation, if the following criteria are met:

(a) Street walls. The first floors of all buildings, including structured parking must be designed to encourage and complement pedestrian-scale interest and activity.

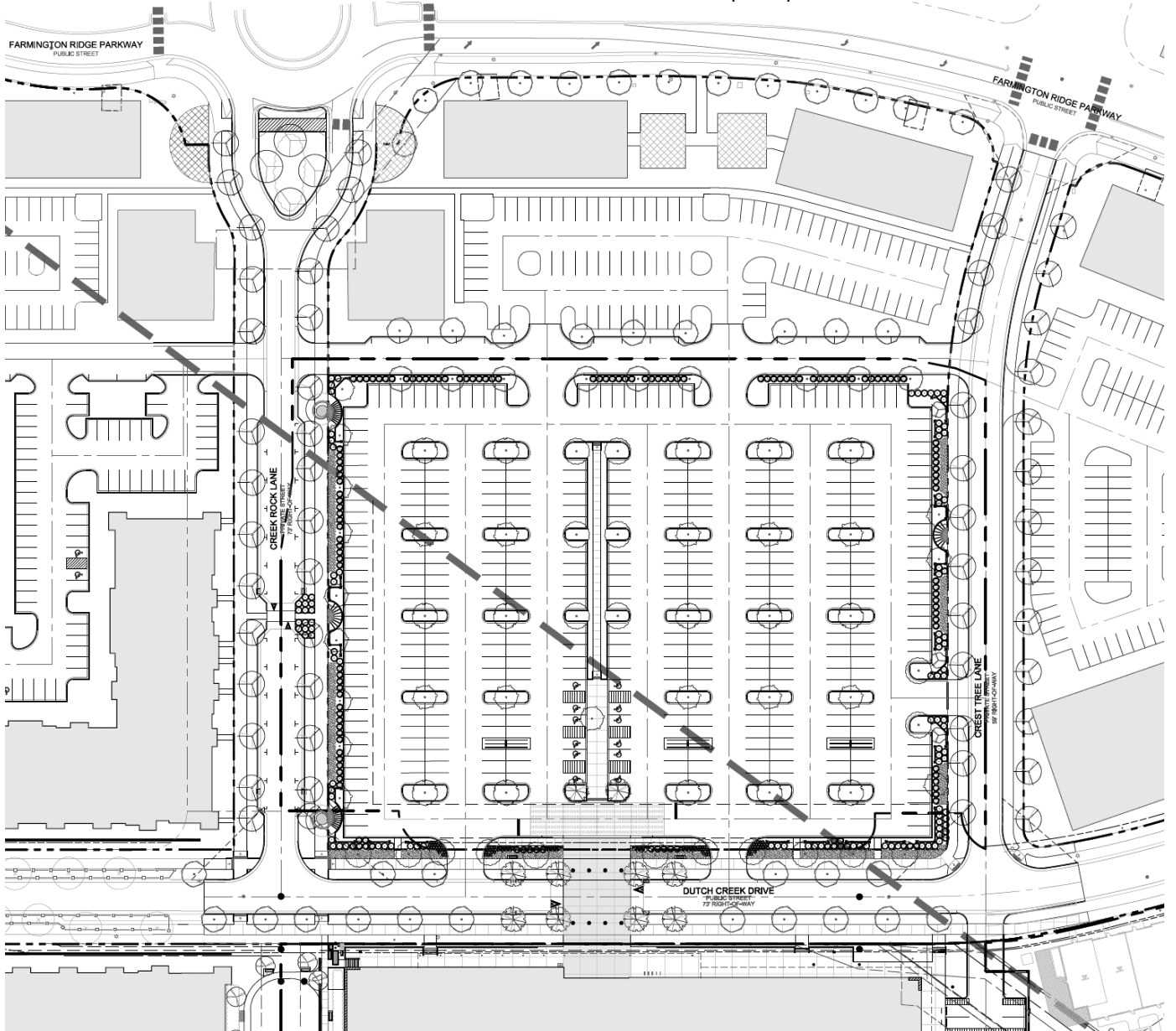
(b) Structured parking facilities. Structured parking facilities must be designed so that the only openings at the street level are those to accommodate vehicle entrances and pedestrian access to the structure.

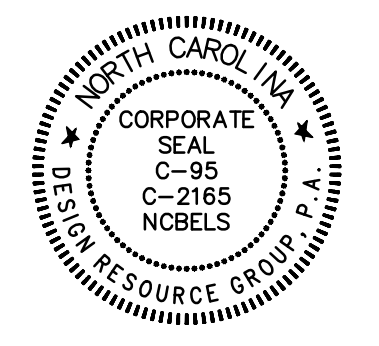
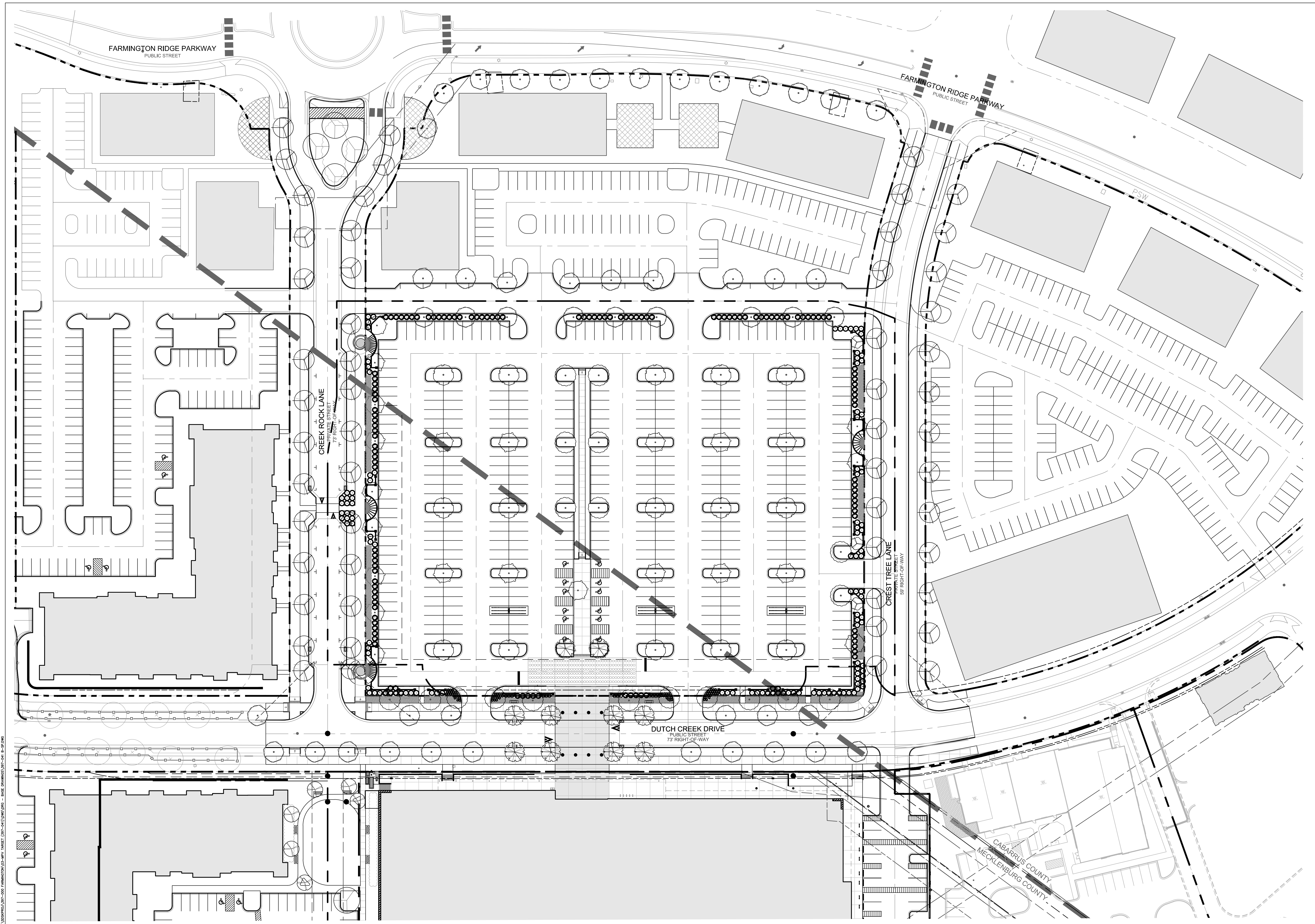
(c) Surface parking. No surface parking or maneuvering space shall be located between any building line and the street.

(d) Service and loading areas. No service or loading area may be oriented towards the street from which the reduced setback will occur, nor be within the area between any building line and the street.

(e) Streetscape requirements. Street trees and sidewalks are required in accordance with a City Council adopted streetscape plan for the area. If there is no adopted streetscape plan, a six-foot sidewalk separated by a planting strip in accordance with the Charlotte Tree Ordinance, is required along all streets.

Below is a image of the Innovative request plan showing the proposed setback and innovative provisions, details on sheets 2 and 3 of the Innovative request plan.



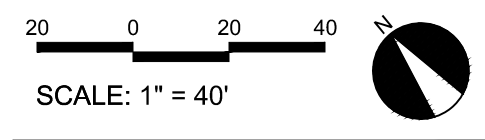


PRELIMINARY

FARMINGTON TARGET
 CHARLOTTE, NORTH CAROLINA

MPV PROPERTIES
 2400 SOUTH BLVD., SUITE 300
 CHARLOTTE, NC 28203
 704.248.2100

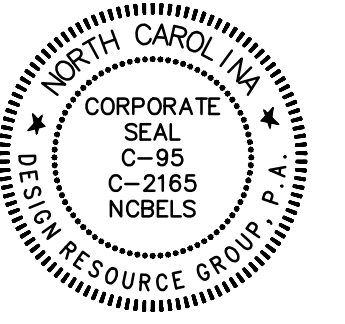
**CONCEPTUAL
 SITE PLAN**



PROJECT #: 397-041
 DRAWN BY: TTF
 CHECKED BY: BG

FEBRUARY 3, 2026

REVISIONS:

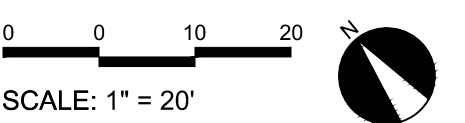


PRELIMINARY

FARMINGTON TARGET
 CHARLOTTE, NORTH CAROLINA

MPV PROPERTIES
 2400 SOUTH BLVD., SUITE 300
 CHARLOTTE, NC 28203
 704.248.2100

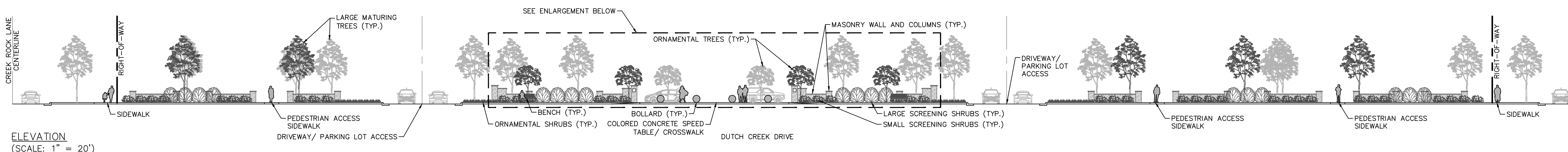
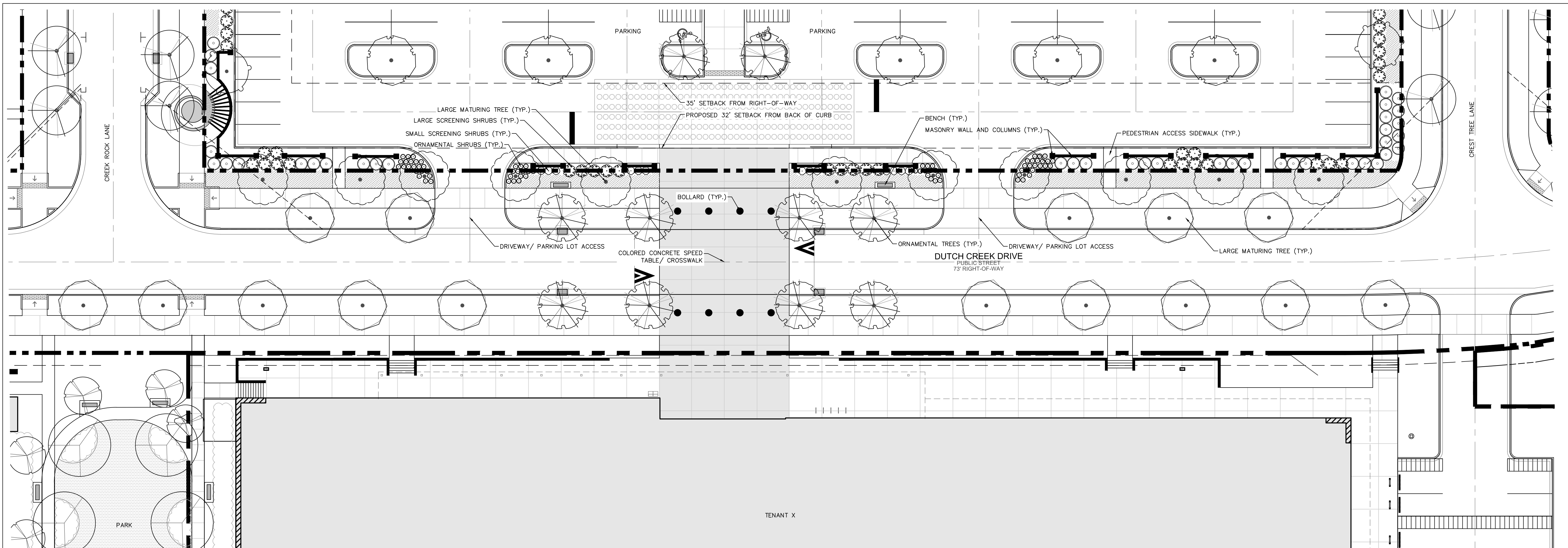
DUTCH CREEK DRIVE SCREENING OPTION



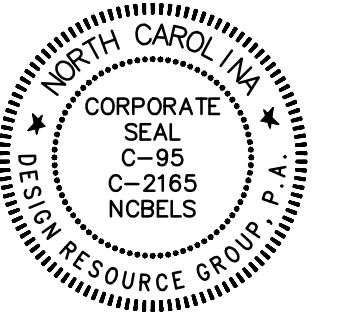
PROJECT #: 397-041
 DRAWN BY: TTF
 CHECKED BY: BG

FEBRUARY 3, 2026

REVISIONS:



- DESIGN ELEMENTS**
- AN 8' PLANTING STRIP, 8' SIDEWALK, AND AN ADDITIONAL PLANTING STRIP VARYING FROM 10' TO 16' WILL BE PROVIDED ALONG DUTCH CREEK LANE.
 - AN 8' PLANTING STRIP, 10' SIDEWALK, AND AN ADDITIONAL PLANTING STRIP OF 12' WILL BE PROVIDED ALONG CREEK ROCK LANE.
 - A SECOND ROW OF TREES SHALL BE PROVIDED BEHIND THE SIDEWALKS TO CREATE A LINEAR PARK SETTING.
 - ENHANCED PAVING MATERIAL WILL BE PROVIDED TO DELINEATE THE PEDESTRIAN CONNECTION ACROSS DUTCH CREEK DRIVE BETWEEN THE PARKING LOT AND THE FRONT ENTRANCE OF THE RETAIL BUILDING.
 - PERMANENT SEATING WILL BE PROVIDED ALONG THE SIDEWALKS AND WILL BE RECESSED SO NOT TO OBSTRUCT THE PEDESTRIAN PATH.
 - OPEN SPACE ELEMENTS AND TRELLISES WILL BE PROVIDED.
 - ENHANCED PARKING LOT SCREENING ELEMENTS WILL INCLUDE BOTH LOW MASONRY WALLS AND VARYING TYPES OF SCREENING SHRUBS WITHIN A PLANTING STRIP RANGING FROM 10 TO 16 FEET IN WIDTH.

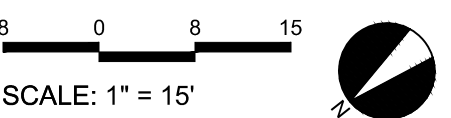


PRELIMINARY

FARMINGTON TARGET
CHARLOTTE, NORTH CAROLINA

MPV PROPERTIES
2400 SOUTH BLVD., SUITE 300
CHARLOTTE, NC 28203
704.248.2100

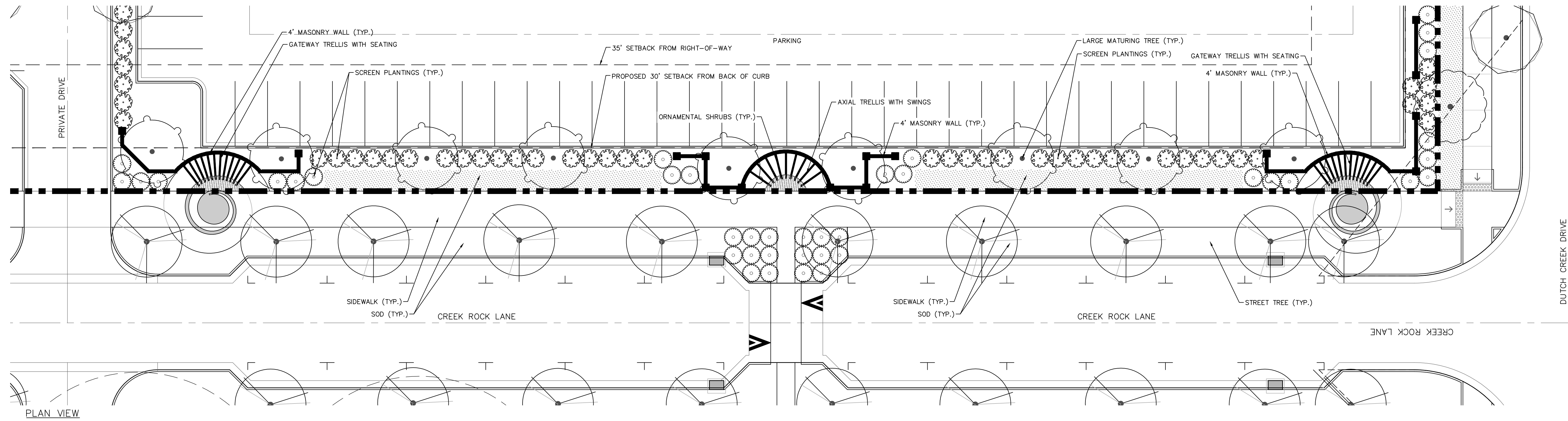
**CREEK ROCK LANE
SCREENING
OPTION**



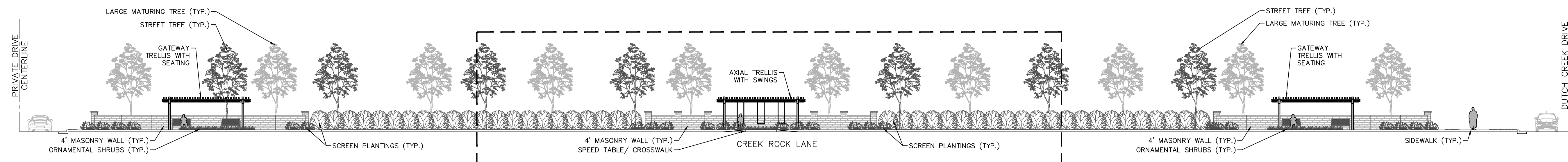
PROJECT #: 397-041
DRAWN BY: TTF
CHECKED BY: BG

FEBRUARY 3, 2026

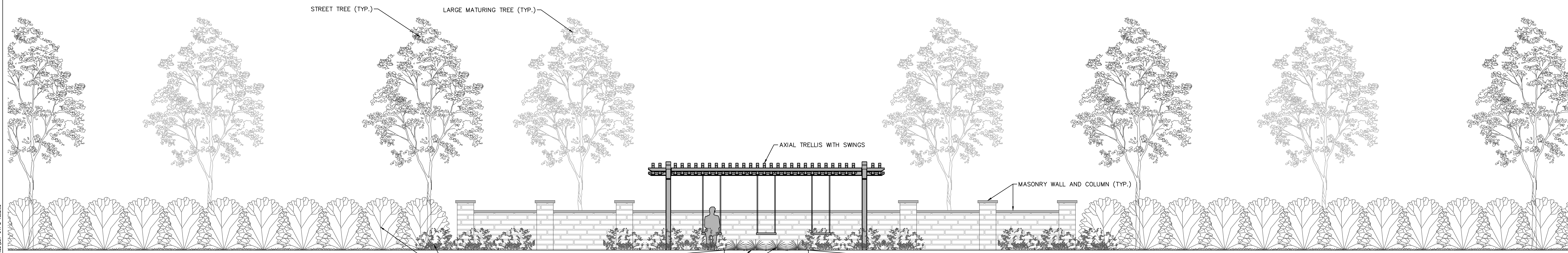
REVISIONS:



PLAN VIEW



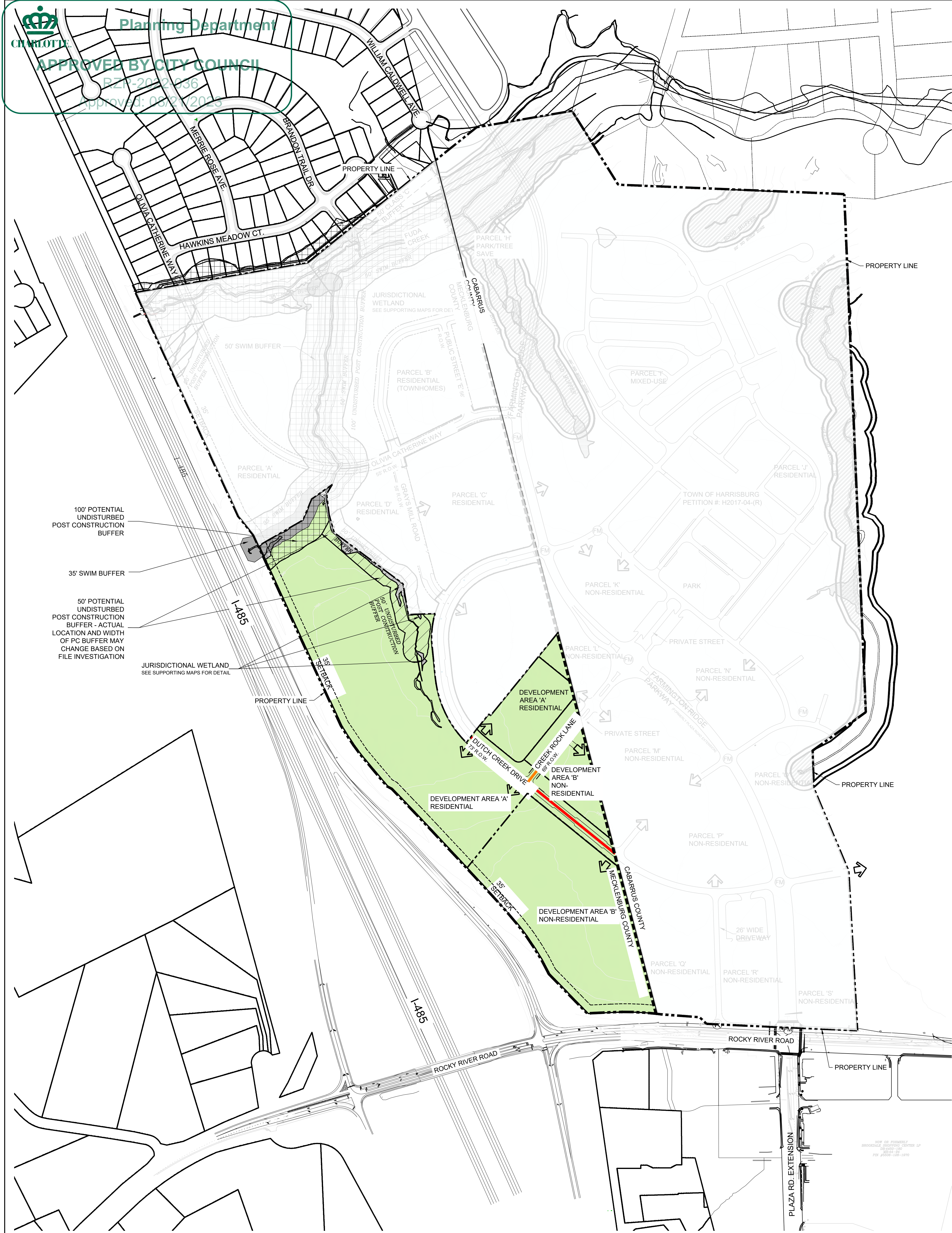
ELEVATION
(SCALE: 1" = 15')



ELEVATION ENLARGEMENT
(SCALE: 1" = 5')

DESIGN ELEMENTS

- AN 8' PLANTING STRIP, 8' SIDEWALK, AND AN ADDITIONAL PLANTING STRIP VARYING FROM 10' TO 16' WILL BE PROVIDED ALONG DUTCH CREEK LANE.
- AN 8' PLANTING STRIP, 10' SIDEWALK, AND AN ADDITIONAL PLANTING STRIP OF 12' WILL BE PROVIDED ALONG CREEK ROCK LANE.
- A SECOND ROW OF TREES SHALL BE PROVIDED BEHIND THE SIDEWALKS TO CREATE A LINEAR PARK SETTING.
- ENHANCED PAVING MATERIAL WILL BE PROVIDED TO DELINEATE THE PEDESTRIAN CONNECTION ACROSS DUTCH CREEK DRIVE BETWEEN THE PARKING LOT AND THE FRONT ENTRANCE OF THE RETAIL BUILDING.
- PERMANENT SEATING WILL BE PROVIDED ALONG THE SIDEWALKS AND WILL BE RECESSED SO NOT TO OBSTRUCT THE PEDESTRIAN PATH.
- OPEN SPACE ELEMENTS AND TRELLISES WILL BE PROVIDED.
- ENHANCED PARKING LOT SCREENING ELEMENTS WILL INCLUDE BOTH LOW MASONRY WALLS AND VARYING TYPES OF SCREENING SHRUBS WITHIN A PLANTING STRIP RANGING FROM 10 TO 16 FEET IN WIDTH.



Planning Department
APPROVED BY CITY COUNCIL
 PETITION NO. 2022-036
 APPROVAL: 03/27/2023

- ROAD LEGEND**
- PRIVATE STREET
 - PUBLIC STREET
 - ACCESS POINT
 - RIGHT IN/RIGHT OUT ACCESS
 - FULL MOVEMENT ACCESS
 - SIGNALIZED INTERSECTION

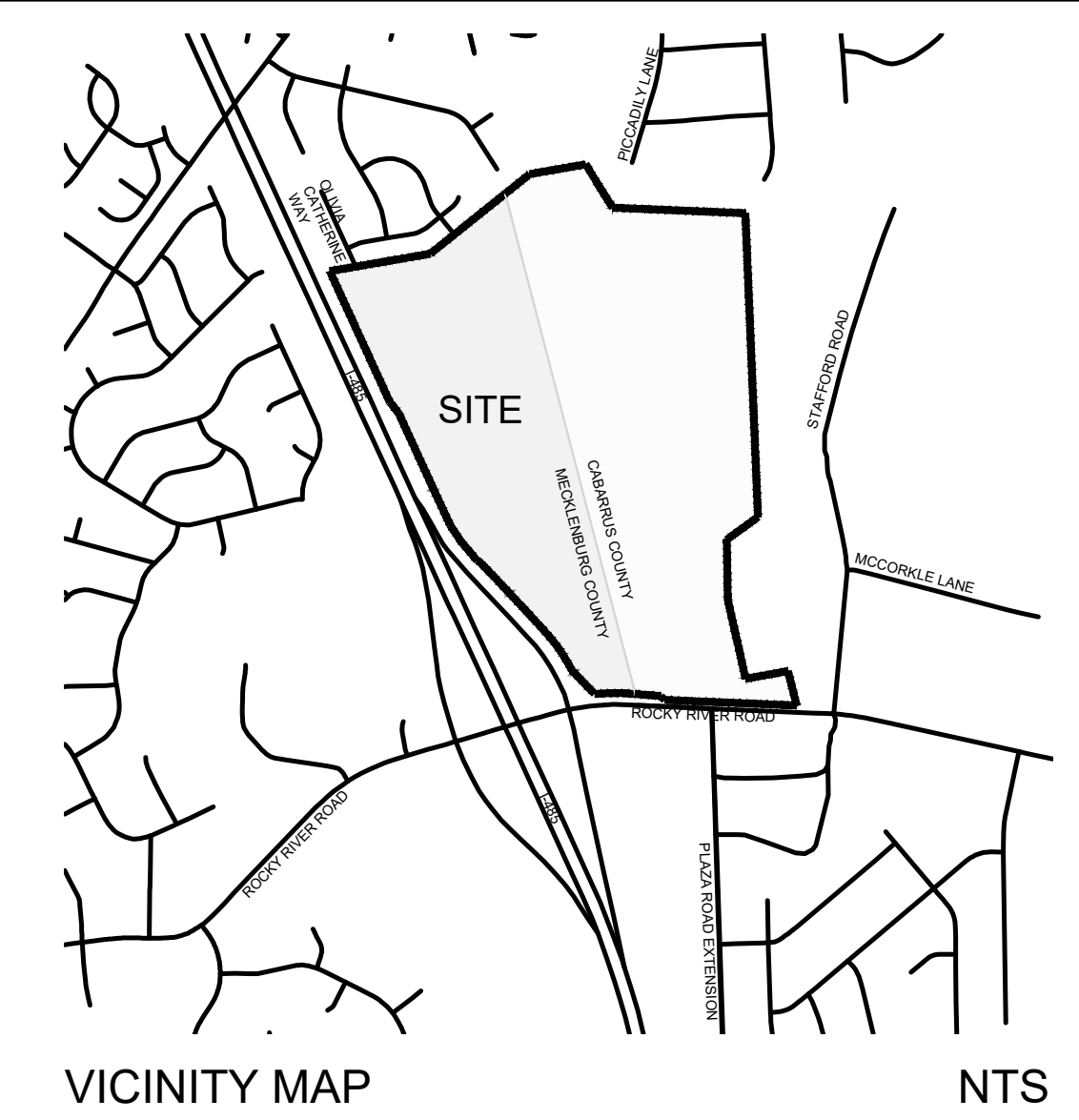
- STREAM BUFFER LEGEND**
- 50' POTENTIAL UNDISTURBED POST CONSTRUCTION BUFFER
 - 100' POTENTIAL UNDISTURBED POST CONSTRUCTION BUFFER
 - 35' SWIM BUFFER
 - 50' SWIM BUFFER

SITE DEVELOPMENT NOTES:

- ACREAGE: +/- 31.935 ACRES
- TAX PARCEL S: A 105-361-89, 105-361-97, 105-361-98, 105-361-93, 105-361-92, AND 105-361-91
- EXISTING ZONING: CC BY REZONING PETITION NO. 2017-042
- PROPOSED ZONING: CC SPA
- EXISTING USES: VACANT/IN DEVELOPMENT
- PROPOSED USES: USES PERMITTED BY RIGHT AND UNDER PRESCRIBED CONDITIONS TOGETHER WITH ACCESSORY USES, AS ALLOWED IN THE CC ZONING DISTRICT (AS MORE SPECIFICALLY DESCRIBED IN SECTION 2 ON SHEET RZ-2).
- MAXIMUM GROSS SQUARE FT OF DEVELOPMENT: UP TO 150,000 SQUARE FEET OF GROSS FLOOR AREA OF NON-RESIDENTIAL USES AS ALLOWED IN THE CC ZONING DISTRICT, INCLUDING A HOTEL WITH UP TO 120 ROOMS, AND UP TO 325 MULTI-FAMILY/RESIDENTIAL DWELLING UNITS, TOGETHER WITH ACCESSORY USES AS ALLOWED BY THE CC ZONING DISTRICT.
- MAXIMUM BUILDING HEIGHT: AS ALLOWED BY THE ORDINANCE.
- PARKING: AS REQUIRED BY THE ORDINANCE WILL BE PROVIDED. PARKING FOR THE USES LOCATED WITHIN MECKLENBURG COUNTY MAY BE LOCATED ON THE PORTION OF THE SITE LOCATED WITHIN HARRISBURG AND VICE VERSA.

DEVELOPMENT AREA 'A'
 COUNTY: MECKLENBURG
 EXISTING ZONING: CC
 PROPOSED ZONING: CC SPA
 PROPOSED USES:
 -RESIDENTIAL

DEVELOPMENT AREA 'B'
 COUNTY: MECKLENBURG
 EXISTING ZONING: CC
 PROPOSED ZONING: CC SPA
 PROPOSED USES:
 -NON-RESIDENTIAL



VICINITY MAP NTS

NOTE: STREET CROSS-SECTIONS FOUND ON SHEET RZ-3.

NOTE: SEE CROSS-SECTIONS FOR SETBACK INFORMATION.

- NOTES**
1. DEDICATION AND FEE SIMPLE CONVEYANCE OF ALL RIGHTS-OF-WAY TO THE CITY BEFORE THE SITE'S FIRST BUILDING CERTIFICATE OF OCCUPANCY IS ISSUED AS NEEDED. CDOT REQUESTS RIGHTS-OF-WAY SET AT 2' BEHIND BACK OF SIDEWALK WHERE FEASIBLE.
 2. ALL TRANSPORTATION IMPROVEMENTS WILL BE APPROVED AND CONSTRUCTED BEFORE THE SITE'S FIRST BUILDING CERTIFICATE OF OCCUPANCY IS ISSUED AS NEEDED. THE PETITIONER MAY PHASE TRANSPORTATION IMPROVEMENTS IF SAID IMPROVEMENTS AND PHASING ARE EXPLICITLY DESCRIBED IN SITE PLAN NOTES.

233 N Graham Street, Charlotte, NC 28202
 V: 704.333.0325 F: 704.333.3746
 www.landdesign.com
 NC Eng. Firm License: C-0468

PETITION NO. 2022-036

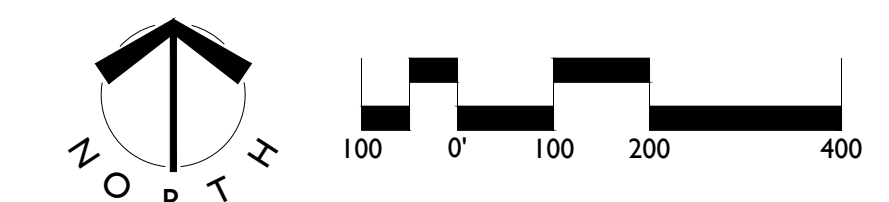
FARMINGTON
CHARLOTTE, NORTH CAROLINA
 ROCKY RIVER ROAD ASSOCIATES, LLC
 SITE REZONING - TECHNICAL DATA SHEET/DEVELOPMENT STANDARDS

REVISIONS:
 1. 06/12/2023 - REVISED PER COMMENTS
 2. 08/02/2023 - MINOR CLEANUP EDITS

DATE: 02-21-2022
 DESIGNED BY: LD
 CHECKED BY: LD
 C.C. BY: AS SHOWN
 PROJECT: 2018184

SHEET **RZ-1**

PETITION # 2022-036
 CITY OF CHARLOTTE
 PETITIONER: ROCKY RIVER ROAD ASSOCIATES, LLC



Purpose of SPA: This Petition modifies the originally approved Conditional Plan for the Site to reduce the amount of non-residential square footage from 191,000 to 150,000, eliminates a theater as an allowed use, and increases the total number of allowed residential by 224 from 515 to 739 units. The portion of the original petition (2017-042) not included in this petition has been allocated 414 of the previously approved 515 units (139 townhomes and 275 apartments). The remaining 101 units are included in this petition and are part of the proposed 325 multi-family units.

1. General Provisions:
 a. These Development Standards form a part of the Rezoning Plan associated with the Rezoning Petition filed by MPV Properties (the Petitioner) to accommodate development of a residential, retail, EDEE (restaurant), office, and other allowed non-residential uses, as a mixed-use community on the site located on Rocky River Road and proposed Farmington Ridge Parkway (formerly Plaza Rd. Extension) (the "Site").
 b. Development of the Site will be governed by the Rezoning Plan as well as the applicable provisions of the City of Charlotte Zoning Ordinance (the "Ordinance"). Unless the Rezoning Plan establishes more stringent standards, the regulations established under the Ordinance for the CC classification for the Site so designated on the Rezoning Plan, shall govern all development taking place on the Site.
 c. **Graphics and Alterations.** The schematic depictions of the uses, parking areas, sidewalks, structures and buildings, driveways, streets and other development matters and site elements (collectively the "Development/Site Elements") set forth on the Rezoning Plan should be reviewed in conjunction with the provisions of these Development Standards. The layout, locations, sizes and formulations of the Development/Site Elements depicted on the Rezoning Plan are graphic representations of the Development/Site Elements proposed. Changes to the Rezoning Plan not anticipated by the Rezoning Plan will be reviewed and approved as allowed by Section 6.207 of the Ordinance.

Since the project has not undergone the design development and construction phases, it is intended that this Rezoning Plan provide for flexibility in allowing some alterations or modifications from the graphic representations of the Development/Site Elements. Therefore, there may be instances where minor modifications will be allowed without requiring the Administrative Amendment Process per Section 6.207 of the Ordinance. These instances would include changes to graphics if they are:
 i. minor and don't materially change the overall design intent depicted on the Rezoning Plan.
 The Planning Director will determine if such minor modifications are allowed per this amended process, and if it is determined that the alteration does not meet the criteria described above, the Petitioner shall then follow the Administrative Amendment Process per Section 6.207 of the Ordinance; in each instance, however, subject to the Petitioner's appeal rights set forth in the Ordinance.

d. **Exclusions for Calculation of Maximum Development Levels.** For purposes of the development limitations set forth in these Development Standards (but not to be construed as a limitation on FAR requirements), the following items will not be counted as part of the allowed gross floor area (as defined by the Ordinance) for the Site: surface or structured parking facilities, all loading dock areas (open or enclosed), open unconditioned second story balconies, and outdoor dining areas whether on the roof of the building(s) or at street level (parking for outdoor dining areas will be provided as required by the Ordinance or these development standards).

2. Permitted Uses & Development Area Limitation:
 a. Subject to the restrictions and limitations listed below, the principal buildings constructed on the Site may be developed with up to 150,000 square feet of gross floor area of non-residential uses permitted by right and under prescribed conditions, retail, EDEE (restaurants), office uses, plus a hotel with 120 rooms, and up to 325 multi-family residential units together with accessory uses in the Commercial Center (CC) zoning district, as applicable.
 b. For ease of reference, the Rezoning Plan sets forth two (2) development areas as generally depicted on the Technical Data Sheet as Development Areas A and B (each a "Development Area" and collectively the "Development Areas").

c. None of the proposed buildings may be constructed so that they straddle the existing county line. The proposed buildings must be wholly constructed within either Mecklenburg County or Cabarrus County. Parking for the proposed uses may be in either county.

d. Within Development Areas A up to 325 residential dwelling units will be allowed, as allowed in the CC zoning district together with accessory uses as allowed by the CC Zoning District.

e. Within Development Areas B up to 150,000 square feet of gross floor area of non-residential uses, plus a hotel with up to 120 rooms will be allowed, as allowed in the CC zoning district together with accessory uses as allowed in the CC zoning district.

f. The following use will not be allowed on the Site, convenience stores with or without fuel sales, and EDEE (restaurants) with an accessory drive-through window.

3. Access and Proposed Roadways:
 a. Access to the Site will be from Dutch Creek Drive, and Creek Rock Ln. as generally depicted on the Rezoning Plan.

b. A new network of public and private streets (Dutch Creek Dr. & Creek Rock Ln.) will be constructed on Site as generally depicted on the Rezoning Plan. A cross-section for each of the proposed streets has been included with the Petition. The proposed cross-sections indicate setbacks as will streetscape elements. The cross-section for the streets may be adjusted during the land development approval process for the Site.

c. The number and location of access points to the internal public and private streets will be determined during the land development approval process.

d. The alignment of the internal public and private streets, vehicular circulation and driveways may be modified by the Petitioner to accommodate changes in traffic patterns, parking layouts and any adjustments required for approval by the Charlotte Department of Transportation (CDOT) in accordance with published standards.

4. Transportation Improvements
 The Petitioner plans to provide or cause to be provided on its own or in cooperation with other parties who may implement portions of the improvements, the improvements set forth below to benefit overall traffic patterns throughout the area in accordance with the following implementation provisions:

The following Transportation Improvements are also illustrated on figure 10 located on Sheet RZ-2 of the Rezoning Plan. Figure 10 on Sheet RZ-2 is to be used in conjunction with the following notes to determine the extent of the proposed improvements (reference to a number when describing an improvement corresponds to the number found on Figure 10 on Sheet RZ-2 for the proposed improvement).
 The following roadway improvements will be made by the Petitioner as part of the development of the Site as proposed by the Rezoning Plan. The Petitioner will be allowed to obtain a certificate of occupancy for any one or all of the buildings located on the Site upon the substantial completion of the following improvements:

I. Proposed Improvements:
 a. The Petitioner will extend and have open to the public Farmington Ridge Parkway from Rocky River Road to Caldwell Road prior to the issuance of the first certificate of occupancy.

b. The Petitioner will study and correct a potential intersection sight distance issues at Farmington Ridge Parkway and Caldwell Road (looking west). If a sight distance issue exists and is not corrected by others, the Petitioner will work with CDOT and NCDOT to correct the problem prior to the issuance of the first certificate of occupancy on the Site.

c. **I-485 Inner Ramp @ Rocky River Road:**
 - Provide second eastbound through lane with 500 feet of storage length and appropriate taper.
 - Provide protected permitted phasing for westbound left turn traffic along Rocky River Road (in conjunction with Holcombe's improvements to Rocky River Road & I-485).

d. **Rocky River Road @ Plaza Road Extension/Farmington Ridge Parkway:**
 - Construct dual eastbound left turn lanes along Rocky River Road with 325 feet of storage and appropriate taper.
 - Modify geometry of the northbound approach along Plaza Road Extension to provide dual northbound left turn lanes (1 with 275 feet of storage, 1 with full storage), one thru lane (200 feet of storage), and one right turn lane (200 feet of storage).
 - Construct the southbound approach along Farmington Ridge Parkway to provide dual southbound, left turn lanes (200 feet of storage), one thru lane, and one right turn lane.
 - Construct a westbound right turn lane along Rocky River Road with 250 feet of storage and appropriate taper.
 - Extend the existing westbound left turn lane along Rocky River Road to provide 300 feet of storage and appropriate taper.
 - Modify signal design accordingly due to geometric improvements.

e. **Rocky River Road @ Proposed Right-In/Right-out Access:**
 - Construct a westbound right turn lane along Rocky River Road with 100 feet of storage and appropriate taper.

f. **Caldwell Road @ Farmington Ridge Parkway:**
 - Construct an eastbound right turn lane along Caldwell Road with 100 feet of storage and appropriate taper.

g. **Farmington Ridge Parkway @ Caldwell Road:**
 - Remark the northbound approach of Farmington Ridge Parkway at Caldwell Road to create three lanes: one receiving lane, a left turn lane, and a thru/right-turn lane.

h. **CDOT/NCDOT Standards.** All of the foregoing public roadway improvements will be subject to the standards and criteria of CDOT and NCDOT, as applicable, to the roadway improvements within their respective road system authority. It is understood that such improvements may be undertaken by the Petitioner on its own or in conjunction with other development or roadway projects taking place within the broader northeast Mecklenburg area, by way of a private/public partnership effort or other public sector project support.

i. **Substantial Completion.** Reference to "substantial completion" for certain improvements as set forth in the provisions of above shall mean completion of the roadway improvements in accordance with the standards set forth in Section 4.1b above provided, however, in the event certain non-essential roadway improvements (as reasonably determined by CDOT) are not completed at the time that the Petitioner seeks to obtain a certificate of occupancy for building(s) on the Site in connection with related development phasing described above, then CDOT may instruct applicable authorities to allow the issuance of certificates of occupancy for the applicable buildings, and in such event the Petitioner may be asked to post a letter of credit or a bond for any improvements not in place at the time such a certificate of occupancy is issued to secure completion of the applicable improvements.

j. **Right-of-way Availability.** It is understood that some of the public roadway improvements referenced in subsection a. above may not be possible without the acquisition of additional right of way. If after the exercise of diligent good faith efforts over a minimum of a 60-day period, the Petitioner is unable to acquire any land necessary to provide for any such additional right of way upon commercially reasonable terms and at market prices, then CDOT, the City of Charlotte Engineering Division or other applicable agency, department or governmental body agree to proceed with acquisition of any such land. In such event, the Petitioner shall reimburse the applicable agency, department or governmental body for the cost of any such acquisition proceedings including compensation paid by the applicable agency, department or governmental body for any such land and the expenses of such proceedings. Furthermore, in the event public roadway improvements referenced in subsection a. above are delayed because of delays in the acquisition of additional right-of-way as contemplated herein and such delay extends beyond the time that the Petitioner seeks to obtain a certificate of occupancy for building(s) on the Site in connection with related development phasing described above, then the Petitioner will work with City Staff to determine a process to allow the issuance of certificates of occupancy for the applicable buildings; provided, however, Petitioner continues to exercise good faith efforts to complete the applicable road-way improvements; in such event the Petitioner may be asked to post a letter of credit or a bond for any improvements not in place at the time such a certificate of occupancy is issued to secure completion of the applicable improvements.

k. **Alternative Improvements.** Changes to the above referenced roadway improvements can be approved through the Administrative Amendment process upon the determination and mutual agreement of Petitioner, CDOT and NCDOT, and the Planning Director as applicable, provided, however, the proposed alternate transportation improvements provide (in the aggregate) comparable transportation network benefits to the improvements identified in this Petition.

l. **Right-of-way Dedication.** The right-of-way for the new public streets located on the portion of the Site located in Mecklenburg County/City of Charlotte will be offered for dedication as required by the subdivision regulations. A two (2) foot utility and street maintenance easement will be provided along the proposed public streets. The two (2) foot utility and street maintenance easement will be located behind the proposed sidewalk when less than two (2) feet or right-of-way will exist behind the proposed sidewalk.

5. Architectural Standards:
 a. The principal buildings constructed on the Site may use a variety of building materials. The building materials used will be a combination of the following: brick, stone, simulated stone, pre-cast stone, precast concrete, synthetic stone, stucco, EIFS or wood. Vinyl as a building material may only be used on windows, soffits and on handrails/railings.

b. Architectural and Design Controls.

1. Non-Residential Building Placement and Site Design shall focus on and enhance the pedestrian environment on public or private network required streets, through the following:

i. Buildings fronting on the existing and proposed public and private streets (other than I-485 and associated on ramps) will be articulated such that expanses of solid walls exceeding 20 linear feet will be avoided with either horizontal and vertical variations in wall planes, materials and/or building color. A blank wall is a façade that does not add to the character of the streetscape and does not contain transparent windows or door or sufficient ornamentation, decoration, or articulation. When this approach is not feasible architectural elements must be used on the building façade at street level. Elements may include but are not limited to: molding; string courses; belt courses; changes in material or color; architectural lighting; works of art; display areas, porches, or stoops. At least one of these elements will be used.

ii. Building facades fronting on public or private streets (other than I-485 and associated on ramps) shall include a minimum of 35% transparent glass between two feet (2') and eight feet (8') on the first floor. Shadow boxes or window graphics may be utilized behind transparent glass to screen bathrooms, back of house, kitchens, or other building elements; shadow boxes or window graphics may not be utilized for more than 10% of the required transparency requirement.

iii. All buildings must be sited maintaining pedestrian interconnectivity between buildings and through parking areas. This will be done by providing a minimum of a six (6) feet sidewalk between buildings and through parking areas (pedestrian walkways in parking areas will be striped) and connecting each building to the sidewalk network that will be provided throughout the Site.

iv. Direct, or as direct as possible, pedestrian connections, via a sidewalk, will be provided between street facing doors, or corner entrance features to sidewalks on adjacent streets. If a building has multiple street frontages with doors facing different streets only one of the entrances will be required to provide a connection. This standard will not apply to emergency access doors.

v. Building elevations (but not the service sides of buildings when located adjacent to the parking areas) shall be designed with vertical bays or articulated architectural features which shall include a combination of at least three of the following: a combination of exterior wall offsets (projections and recesses), columns, pilasters, change in materials or colors, awnings, arcades, or other architectural elements.

vi. All buildings located within the Site will be architecturally integrated to complement one another by using similar or compatible architectural styles, building materials, landscape elements, plants and signage treatments to create a unified and cohesive development. In addition, buildings located on the Site must be designed using a similar: (i) architectural style, (ii) building materials, (iii) colors and (iv) signage so that development on these Parcels creates a cohesive whole and not a series of buildings with unrelated and wholly dissimilar architectural styles, building materials, colors and signage.

vii. The service areas of the non-residential buildings constructed within Development Area B will be screened from the adjoining streets with walls designed to match and compliment the building architecture of the adjacent buildings. Architectural features such as, but not limited to, banding, medallions, changes in color or design features or materials will be provided to avoid a sterile, unarticulated blank treatment of such walls.

viii. Minimum building height for non-residential buildings will be 20 feet.

ix. Retaining walls greater than four (4) feet and along the interior public streets will be treated with landscaping consisting of a minimum of evergreen and/or deciduous plants three to five feet on center.

2. Architectural and Site Design Standards for Multi-family Developments.

i. Preferred Exterior Building Materials: All principal and accessory buildings abutting a network required public or private street shall comprise a minimum of 20% of that building's entire facade facing such network street using brick, natural stone (or its synthetic equivalent), stucco, or other material approved by the Planning Director.

ii. Prohibited Exterior Building Materials:
 a. Vinyl siding (but not vinyl handrails, windows or door trim).
 b. Concrete Masonry Units not architecturally finished.

iii. Building Placement and Site Design shall focus on and enhance the pedestrian environment through the following:
 a. Buildings shall be placed so as to present a front or side façade to all network required streets (public or private).
 b. Buildings shall front a minimum of 50% of the total network required street frontage on the site (exclusive of driveways, pedestrian access, points, accessible open space, tree save or natural areas, tree replanting areas and storm water facilities).
 c. Parking lots shall not be located between any building and any network required public or private street.

iv. Building Massing and Height shall be designed to break up long monolithic building forms as follows:
 a. Buildings exceeding 120 feet in length shall include modulations of the building massing/façade plane (such as recesses, projections, and architectural details). Modulations shall be a minimum of 10 feet wide and shall project or recess a minimum of 2 feet extending through at least a full floor.

v. Architectural Elevation Design – elevations shall be designed to create visual interest as follows:
 a. Building elevations shall be designed with vertical bays or articulated architectural façade features which may include but not be limited to a combination of exterior wall offsets, projections, recesses, pilasters, banding and change in materials or colors.

b. Buildings shall be designed with a recognizable architectural base on all facades facing network required public or private streets. Such base may be executed through use of Preferred Exterior Building Materials (as defined above) or articulated architectural façade features and color changes.
 c. Building elevations facing network required public or private streets shall not have expanses of blank walls greater than 20 feet in all directions and architectural features such as but to limited to banding, medallions or blank features or materials will be provided to avoid a sterile, unarticulated blank treatment of such walls.

vi. Roof Form and Articulation – roof form and lines shall be designed to avoid the appearance of a large monolithic roof structure as follows:
 a. Long pitched or flat roof lines shall avoid continuous expanses without variation by including changes in height and/or roof form, to include but not be limited to gables, hips, dormers or parapets.
 b. For pitched roofs the minimum allowed is 4:12 excluding buildings with a flat roof and parapet walls.
 c. Roof top HVAC and related mechanical equipment will be screened from public view at grade from the nearest street.

vii. Service Area Screening – service areas such as dumpsters, refuse areas, recycling and storage shall be screened from view with materials and design to be compatible with principal structures. Such design shall include a minimum 20 percent Preferred Exterior Building Materials or a Class B buffer not less than 10' in depth at all above grade perimeter not paved for access.

viii. Residential ground floor entrances with stoops shall be provided along the public streets when proposed residential units are located on a public street.

ix. Retaining walls greater than four (4) feet and along the interior public streets will be treated with landscaping consisting of a minimum of evergreen and/or deciduous plants three to five feet on center.

c. The Petitioner will coordinate the general appearance of the Site's residential and non-residential buildings architecture, landscaping, signage and streetscape elements by utilizing generally similar building materials, colors, architectural details, streetscapes, landscape materials and landscape designs.

d. Retaining walls located on the Site will be treated with landscaping to help soften their appearance.

e. Roof top HVAC and related mechanical equipment will be screened from public view at grade.

6. Streetscape, Landscaping and Buffers:

a. A 35-foot building and parking setback will be provided along I-485 and Rocky River Rd. as generally depicted on the Rezoning Plan. The setback area along I-485 will be landscaped with trees, shrubs and other landscape materials, the arrangement and placement of the proposed landscaping will be determined by the Petitioner during the land development approval process.

b. A setback as required by the CC Zoning District will be established along the proposed public streets, provided, however, the Petitioner reserves the right to reduce the CC district setback from 35 feet to 16 feet as allowed by Section 11.403 of the Ordinance. The attached cross-sections include information on when a reduced setback as allowed by the Ordinance is contemplated. The setback along the proposed private streets will be a minimum of 16 feet as measured from the proposed back of curb.

c. Multi-family buildings, will provide a four (4) foot transition zone behind the sidewalk of a required network private or public streets. Stairs and stair rails, stoops, one-story open-air porches and other architectural features may be located within the four (4) foot transition zone.

d. Surfaced parking spaces will not be located between the proposed buildings and the new network required public streets and existing Rocky River Road. This standard will not apply to I-485 and it's associated on-ramp.

e. The Petitioner will provide eight (8) foot planting strips and eight (8) foot sidewalks along the Site's internal public streets as generally depicted on the attached cross-sections. Planting strips and sidewalks along the Site's other public streets will be installed to the extent required by the Design Standards for Streets outlined in the Subdivision regulations.

f. The Petitioner will provide a sidewalk and a crosswalk network that links all the buildings on the Site with one another by way of links to sidewalks along the abutting public and private streets and/or other pedestrian features. The minimum width for these internal sidewalks will be six (6) feet.

g. The proposed sidewalks may meander to preserve healthy, large, existing trees located within the setbacks along the existing public streets.

7. Open Space and Amenity Area Improvements:

a. Open space and an amenity area(s) will be provided on the portion of the Site developed with a multi-family community. A minimum of 8,000 square feet of improved open space area will be provided at a location that is central to the multi-family development and convenient to the future residents of the community. The proposed open space area will be improved with at least three of the following elements: walking paths, landscaping, seating areas, and structures appropriate to the proposed open space area.

8. Environmental Features:

a. The Petitioner shall comply with the Charlotte City Council approved and adopted Pest Construction Controls Ordinance.

b. The location, size, and type of storm water management systems depicted on the rezoning plan are subject to review and approval as part of the full development plan submittal and are not implicitly approved with this rezoning. Adjustments may be necessary in order to accommodate actual storm water design requirements and natural site discharge points.

c. A stream/wetland survey will be required prior to approval of civil site plan to ensure accurate delineation of top-of-bank/stream buffers/creel path and identification of any protected wetlands that may be on the Site.

d. The Site will comply with the Tree Ordinance.

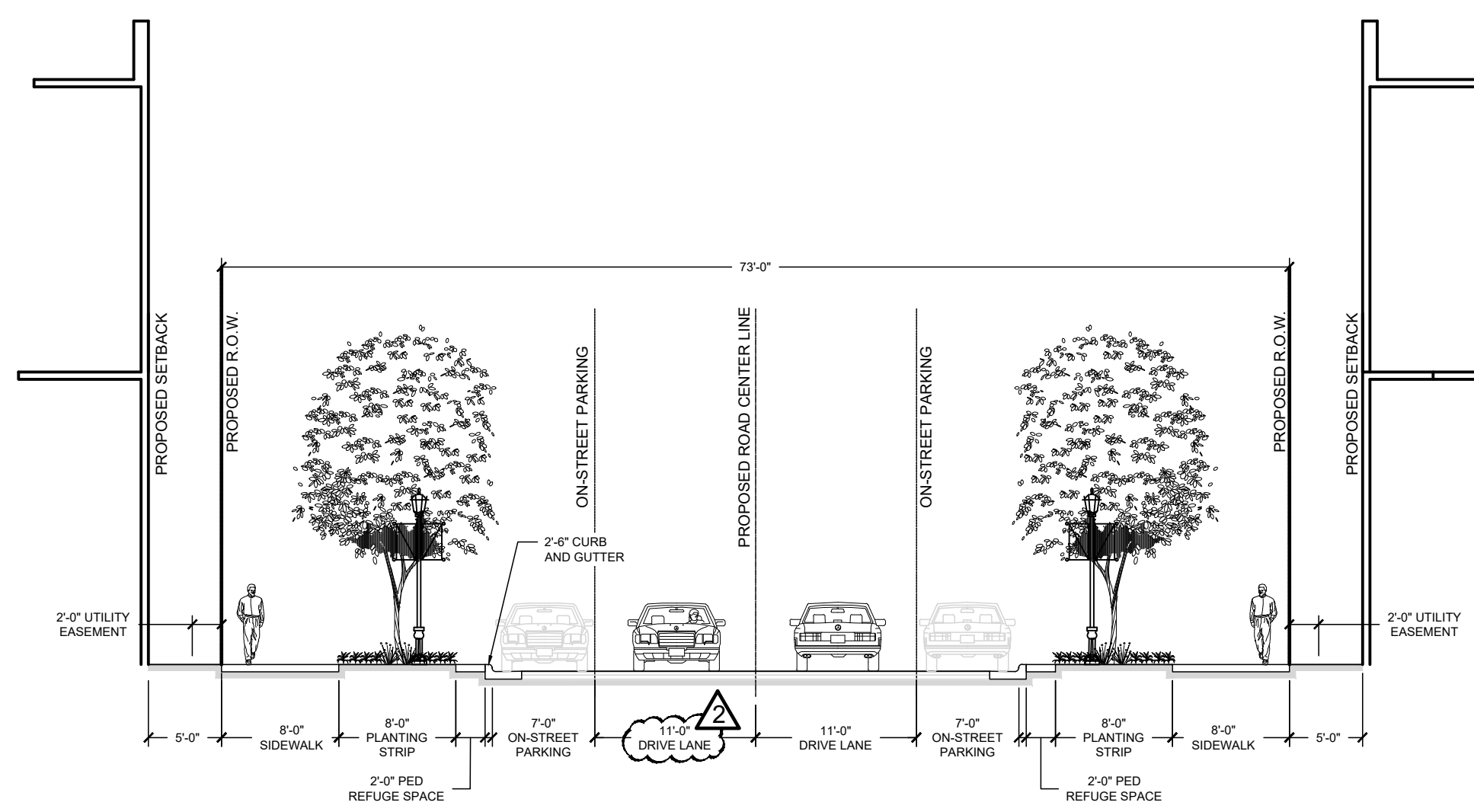
9. Signage:
 a. Reserved.

10. Lighting:
 a. All new lighting shall be full cut-off type lighting fixtures excluding lower, decorative lighting that may be installed along the driveways, sidewalks, and parking areas.

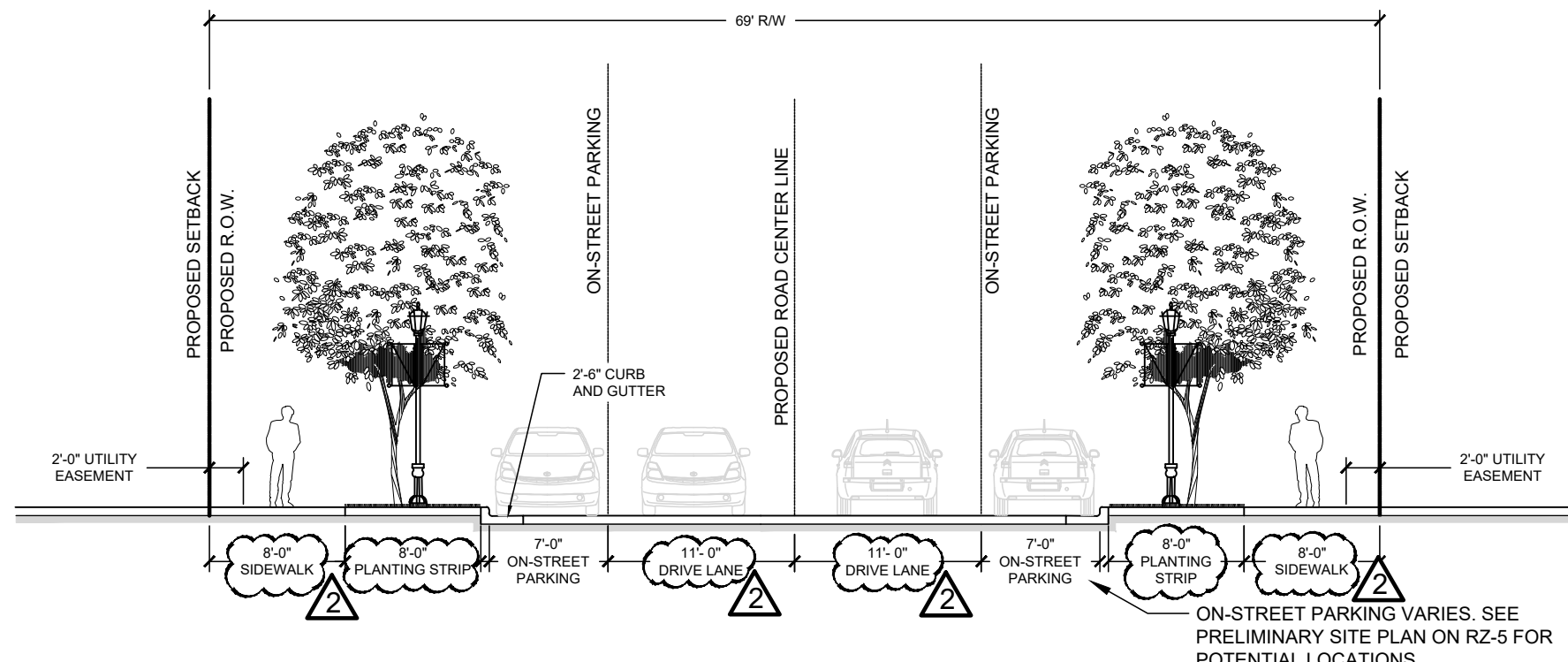
b. Detached lighting on the Site will be limited to 31 feet in height.

11. Amendments to the Rezoning Plan:
 a. Future amendments to the Rezoning Plan (which includes these Development Standards) may be applied for by the then Owner or Owners of the applicable Development Area portion of the Site affected by such amendment in accordance with the provisions herein and of Chapter 6 of the Ordinance.

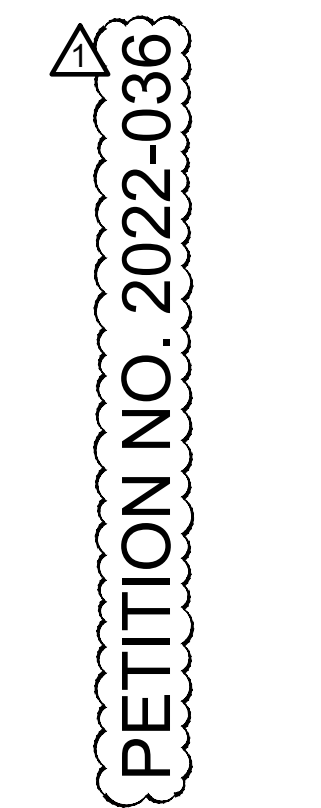
12. Binding Effect of the Rezoning Application:
 a. If this Rezoning Petition is approved, all conditions applicable to the development of the Site imposed under the Rezoning Plan will, unless amended in the manner provided herein and under the Ordinance, be binding upon and inure to the benefit of the Petitioner and subsequent owners of the Site and their respective heirs, devisees, personal representatives, successors in interest or assigns.



DUTCH CREEK DRIVE
 MODIFIED LOCAL OFFICE / COMMERCIAL NARROW STREET TYPICAL SECTION
 SCALE: 1" = 10'-0"



CREEK ROCK LANE
 MODIFIED LOCAL OFFICE / COMMERCIAL NARROW STREET SECTION
 SCALE: 1" = 10'-0"


PETITION NO. 2022-036

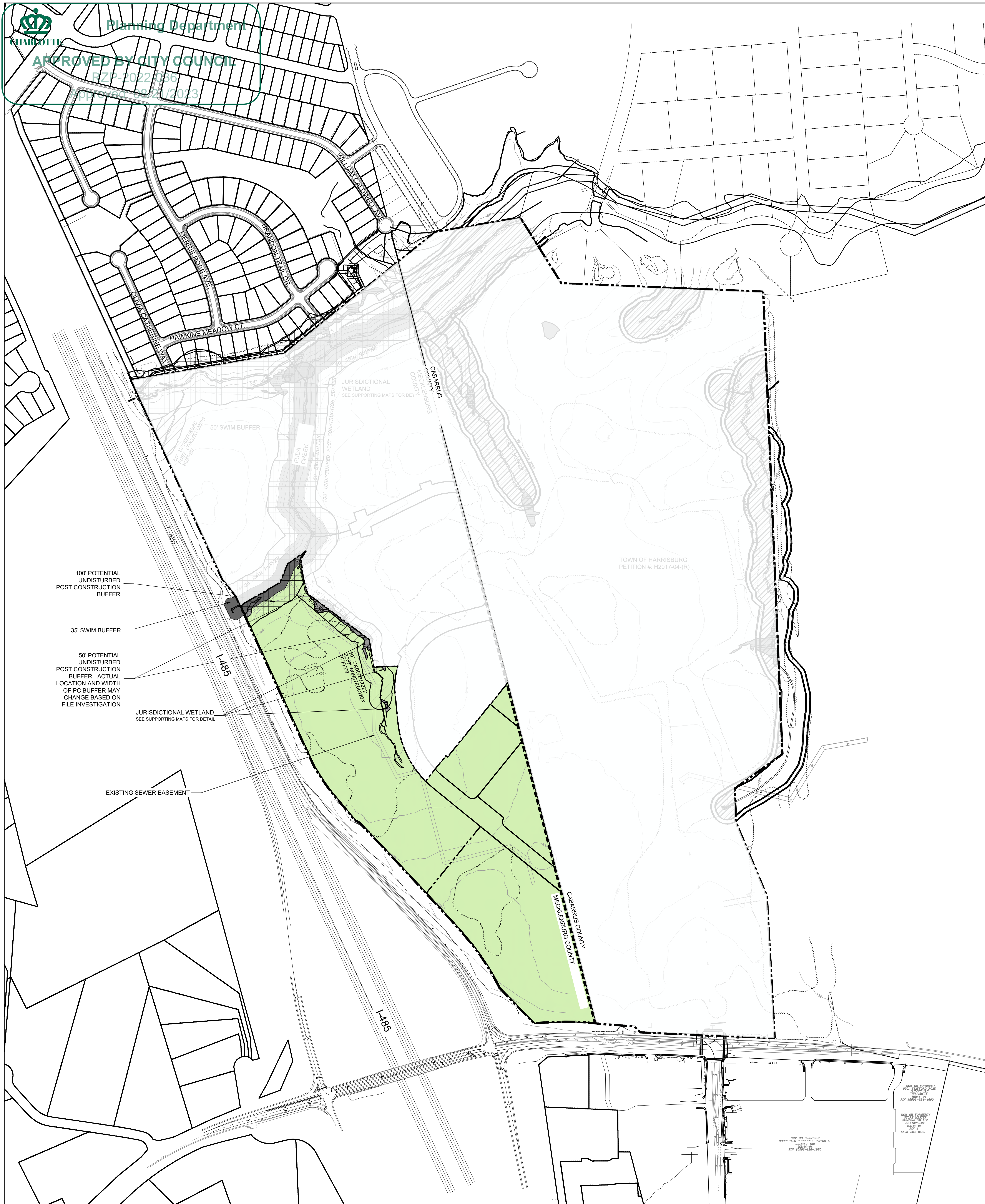
FARMINGTON
CHARLOTTE, NORTH CAROLINA
 ROCKY RIVER ROAD ASSOCIATES, LLC
 SITE REZONING - STREET CROSS-SECTIONS


REVISIONS:
 1. 06/12/2023 - REVISED PER COMMENTS
 2. 08/02/2023 - MINOR CLEANUP EDITS

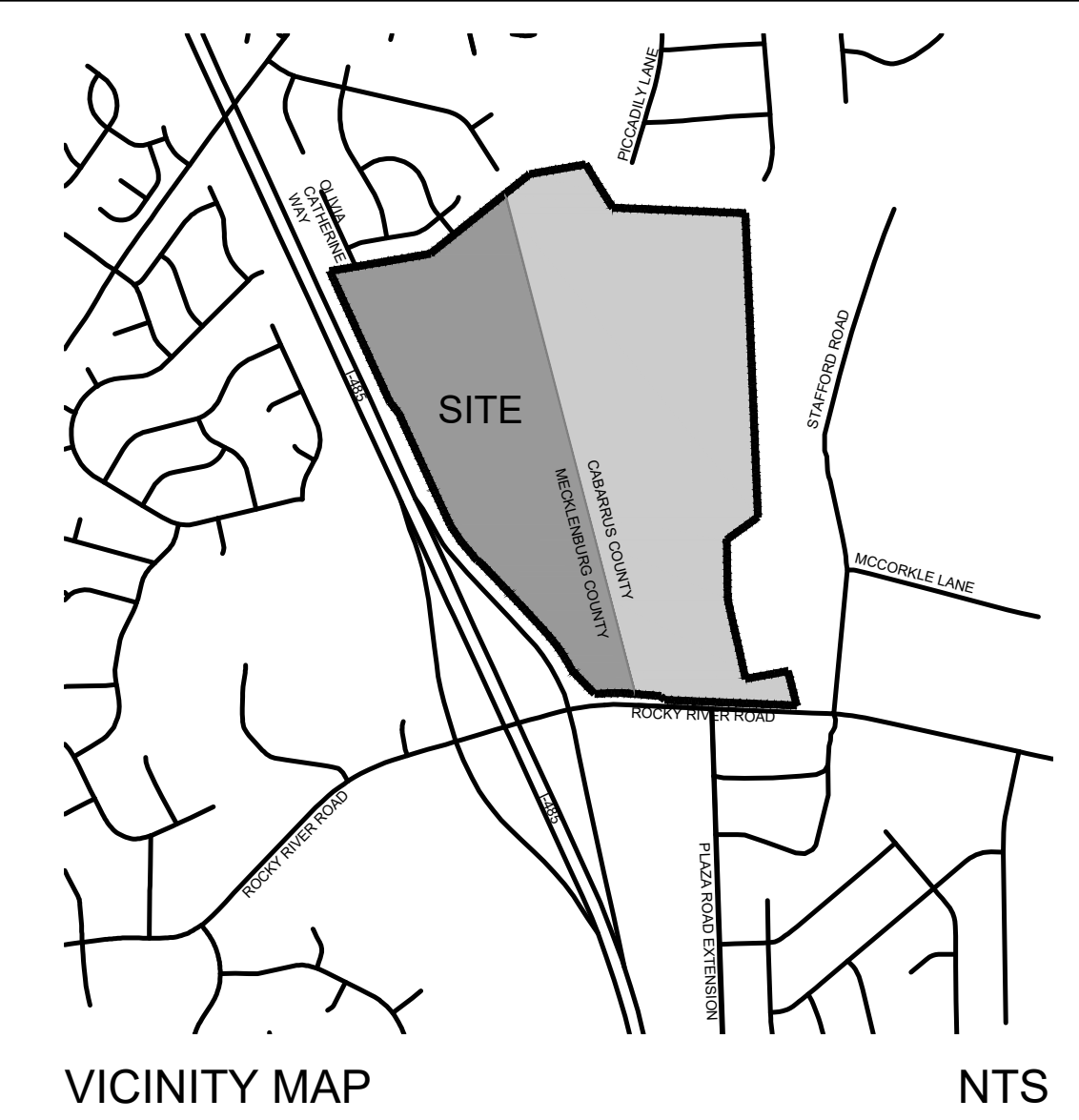
DATE: 02-21-2022
 DESIGNED BY: LD
 CHECKED BY: LD
 C.C. BY: AS SHOWN
 PROJECT: M18184
SHEET
RZ-3


 CITY OF CHARLOTTE
 PETITIONER: ROCKY RIVER ROAD ASSOCIATES, LLC

P:\CT\2018\18184\FARMINGTON\DRAWINGS\PLAN\MODIFIED LOCAL OFFICE / COMMERCIAL NARROW STREET TYPICAL SECTION.dwg, 08/21/2023, 11:52am




 Planning Department
APPROVED BY CITY COUNCIL
 E 72P-2022-036
 01/17/2023
 01/19/23

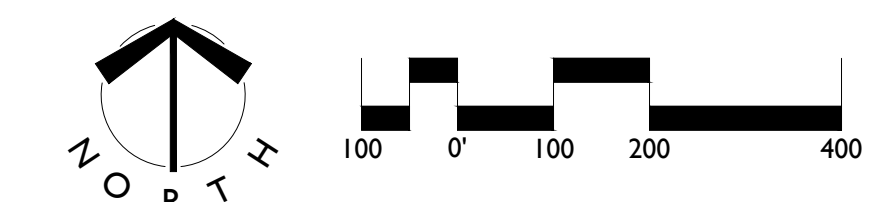


LandDesign
 233 N Graham Street, Charlotte, NC 28202
 V: 704.333.0325 F: 704.333.3746
 www.landdesign.com
 NC Reg. Firm License: C-0458

PETITION NO. 2022-036

FARMINGTON
CHARLOTTE, NORTH CAROLINA
 ROCKY RIVER ROAD ASSOCIATES, LLC
 SITE REZONING - EXISTING CONDITIONS

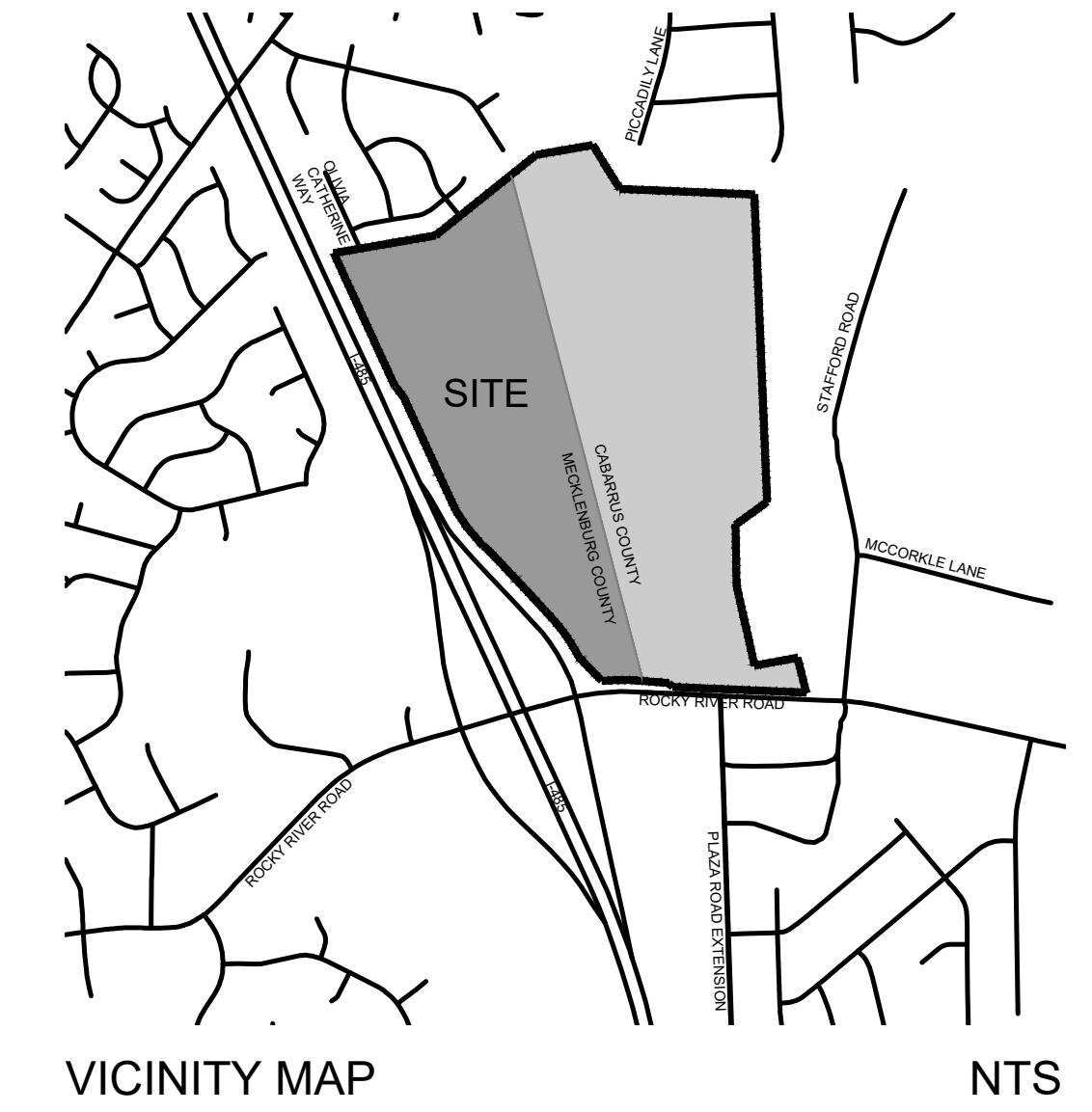
PETITION # 2022-036
 CITY OF CHARLOTTE
 PETITIONER: ROCKY RIVER ROAD ASSOCIATES, LLC



REVISIONS:
 1. 06/17/2023 - REVISED PER COMMENTS
 2. 08/03/2023 - MINOR CLEANUP EDITS

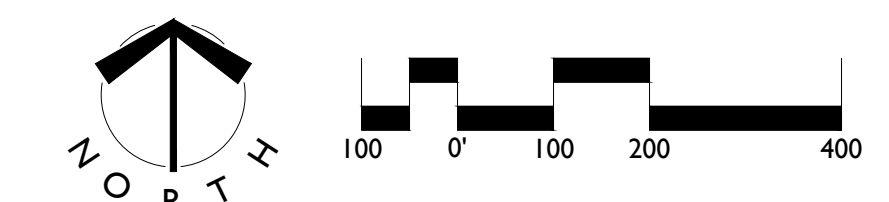
DATE: 02-21-2022
 DESIGNED BY: LD
 CHECKED BY: LD
 O.C. BY: AS SHOWN
 PROJECT: 2018184
SHEET #
RZ-4


FILE: \\P01SRV01\GIS\PROJECTS\FARMINGTON\GIS\2022\2022-036\2022-036_PETITION\01184_RZ04.dwg, 02/21/2023, 11:28am



THE SCHEMATIC DEPICTIONS OF THE USES, PARKING AREAS, SIDEWALKS, STRUCTURES AND BUILDINGS, DRIVEWAYS, AND OTHER DEVELOPMENT MATTERS AND SITE ELEMENTS (COLLECTIVELY THE "DEVELOPMENT/SITE ELEMENTS") SET FORTH ON THE SCHEMATIC SITE PLAN SHOULD BE REVIEWED IN CONJUNCTION WITH THE PROVISIONS OF THESE DEVELOPMENT STANDARDS. THE LAYOUT, LOCATIONS, SIZES AND FORMULATIONS OF THE DEVELOPMENT/SITE ELEMENTS DEPICTED ARE GRAPHIC REPRESENTATIONS OF THE DEVELOPMENT/SITE ELEMENTS PROPOSED AND AS A RESULT MAY CHANGE AS LONG AS THE INTENT ILLUSTRATED IS MAINTAINED.


PETITION # 2022-036
 CITY OF CHARLOTTE
 PETITIONER: ROCKY RIVER ROAD ASSOCIATES, LLC




PETITION NO. 2022-036

FARMINGTON
CHARLOTTE, NORTH CAROLINA
 ROCKY RIVER ROAD ASSOCIATES, LLC
 SITE REZONING - SCHEMATIC SITE PLAN

REVISIONS:
 1. 06/12/2023 - REVISED PER COMMENTS
 2. 08/02/2023 - MINOR CLEANUP EDITS

MPV Properties
2400 South Boulevard, Suite 300
Charlotte, NC 28203

May 7, 2026

Re: Innovative Request for Petition 2022-036 - Farmington

Dear Chairperson Welton and Members of the Zoning Committee,

MPV Properties is requesting an innovative development option within the Farmington Development located on the border of Charlotte and Harrisburg, north of Rocky River Road, and east of I-485. The request is to reduce the required 35-foot setback measured from right-of-way along both Dutch Creek Drive and Creek Rock Lane to the following:

- Dutch Creek Drive – 32-foot setback measured from the back of curb.
- Creek Rock Lane – 30-foot setback measured from the back of curb.

The portion of the Farmington development within Charlotte was rezoned to the pre-UDO conditional zoning district of Commercial Center (CC) in 2017. A rezoning site plan amendment was approved in 2023 by Petition 2022-036. The overall development is approved for a mix of multi-family stacked, multi-family attached, and commercial uses. The proposed innovative request is within the commercial area of the Farmington development.

The requested setback reduction is for a surface parking lot which is to serve and will be located directly across Dutch Creek Drive from a proposed large retail tenant. The proposed retail building will be located up along the street and will have its building façade face Dutch Creek Drive. Setbacks are allowed to be reduced administratively for buildings with enhanced design elements but not surface parking lots on a separate parcel. Section 11.405(2) of the pre-UDO Zoning Ordinance allows for the Planning Commission to grant innovative development options to reduce required setbacks for parking lots if such requests are to provide enhanced design standards.

MPV Properties is proposing the following design elements, streetscape improvements, and supplemental screening along the frontages of Dutch Creek Drive and Creek Rock Lane in order to encourage and complement pedestrian-scale interest and activity along these frontages and meet the criteria for the proposed innovative development option by providing enhanced design standards.

- An 8' planting strip, 8' sidewalk, and an additional planting strip varying from 10' to 16' will be provided along Dutch Creek Lane.
- An 8' planting strip, 10' sidewalk, and an additional planting strip of 12' will be provided along Creek Rock Lane.

- In addition to the required streetscape trees, a second row of trees shall be provided behind the sidewalks to create a linear park setting.
- Enhanced paving material will be provided to delineate the pedestrian connection across Dutch Creek Drive between the parking lot and the front entrance of the retail building.
- Permanent seating will be provided along the sidewalks and will be recessed so not to obstruct the pedestrian path.
- Open space elements and trellises will be provided along the frontages.
- Enhanced parking lot screening elements will include both low masonry walls and varying types of screening shrubs within a planting strip ranging from 10 to 16 feet in width.

Other items to consider is that future buildings are proposed on the opposite corners of the subject property and will create an established building setback along the Dutch Creek Drive frontage. There are also future buildings proposed on the opposite side of the block within Cabarrus County fronting along Farmington Ridge Parkway. Finally, the County line bisects the property at an angle which creates challenges in the placement of a building.

With the enhanced design elements, streetscape improvements, and supplemental screening proposed along Dutch Creek Drive and Creek Rock Lane within Charlotte's zoning jurisdiction, it is requested that the innovative development option to reduce the setbacks as noted above along these frontages be approved. These design standards encourage and complement pedestrian-scale interest and activity along these frontages and meet the criteria for the proposed innovative development option.

Thank you for your time and consideration.

Sincerely,

A handwritten signature in black ink, appearing to read 'George Macon', written over a horizontal line.

George Macon
Managing Partner
MPV Properties