

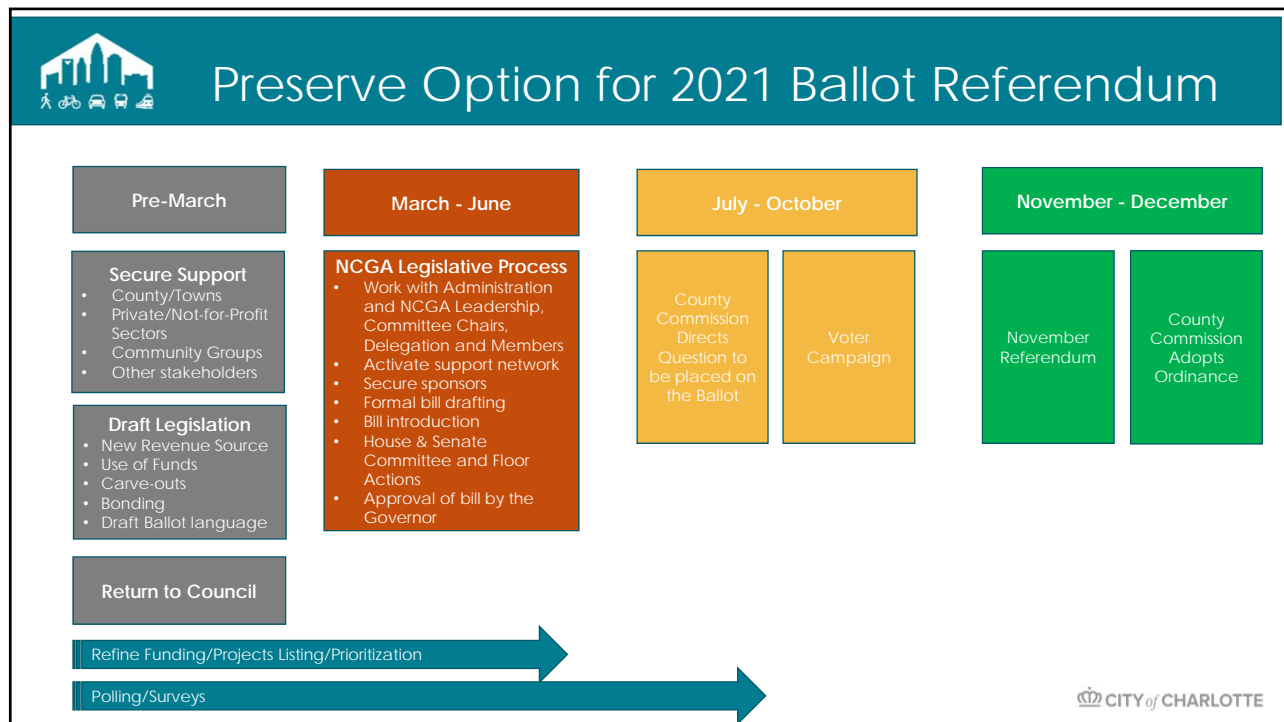


Transformational Mobility Network
City Council Action Review
February 8, 2021



Legislative Outlook

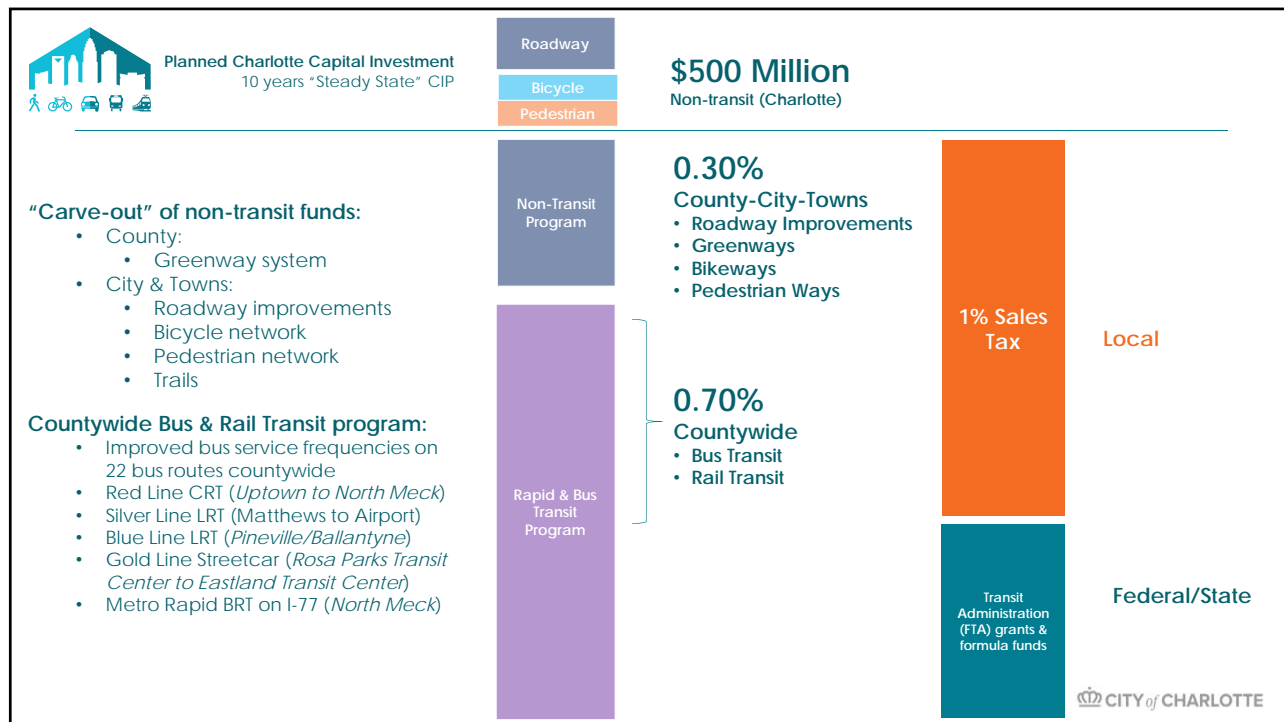
Dana Fenton



Funding Overview

Kelly Flannery

CITY of CHARLOTTE



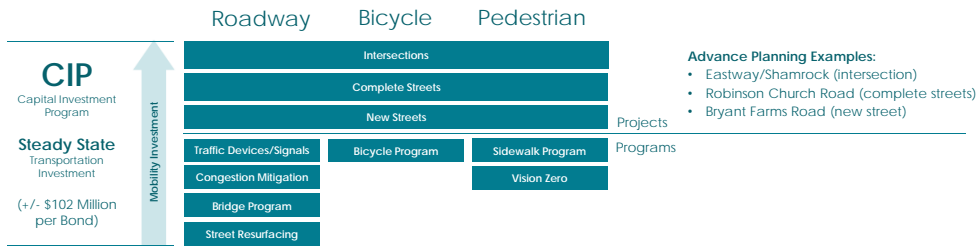
Project Development Process

Liz Babson

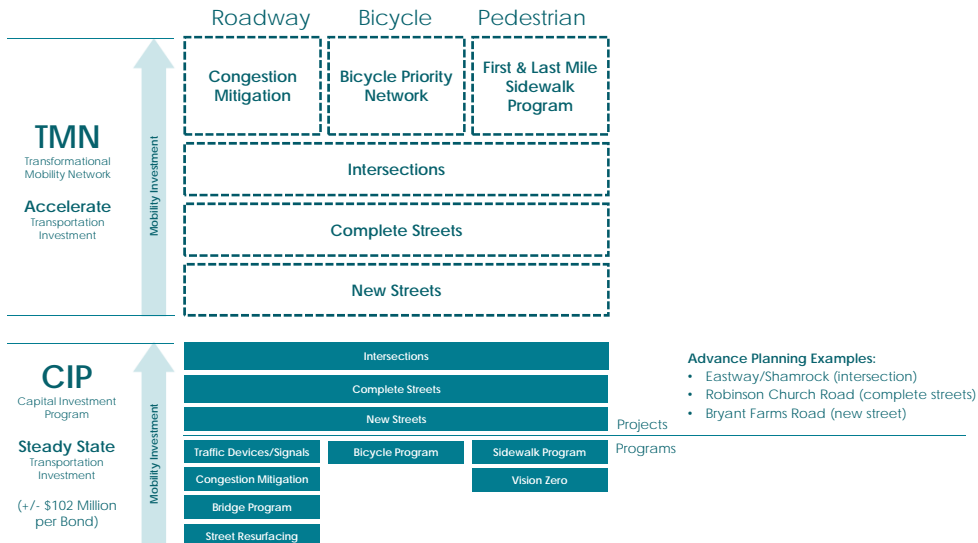
CITY of CHARLOTTE

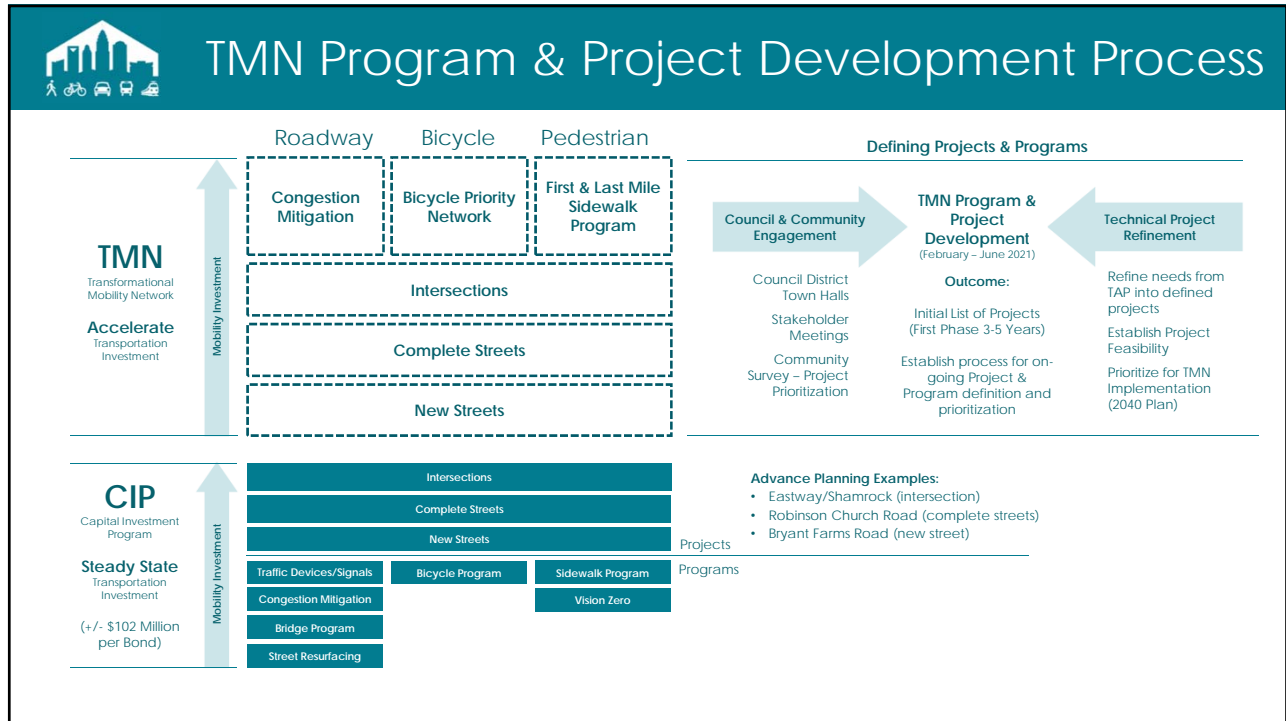


TMN Program & Project Development Process



TMN Program & Project Development Process





Polling Data

Taiwo Jaiyeoba

CITY of CHARLOTTE



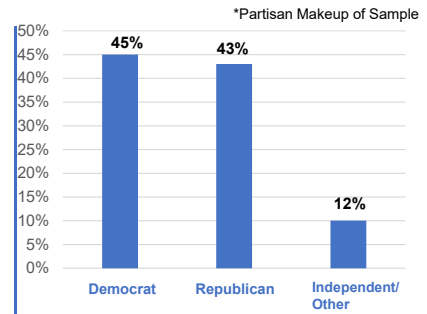
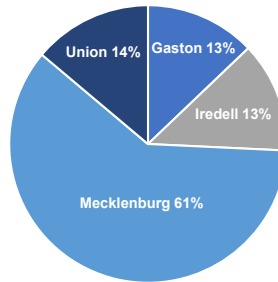
Four-County Polling Data: August 17-24, 2020

Conducted August 17-24, 2020

N = 501 Registered Voters from Gaston, Iredell, Mecklenburg and Union Counties

Ages 18+

67% White
25% African American
33% Total People of Color



84% Agree that "having more transportation options is important."

80% Agree "businesses in my community would benefit from new investments that make it safer and more convenient to walk, bike and ride the bus or light rail."

79% Support "expanding the number of local transportation options."

75% Say there needs to be "more transportation options like buses and light rail."

© ALG Research / NRDC Action Fund

11

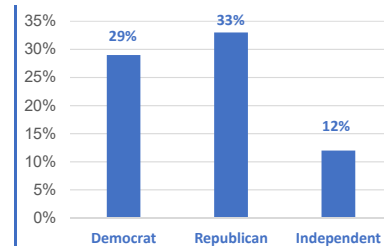
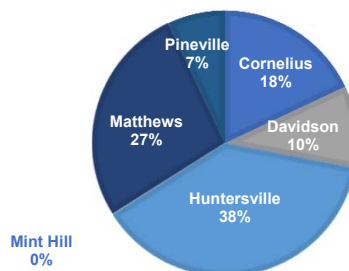


Mecklenburg Towns Polling Data: Jan. 23-25, 2021

N = 400 Registered Voters from non-Charlotte Mecklenburg County

Ages 18 - 65+

74% White 15% African American
4% Hispanic 4% Mixed Race
2% Asian/Pacific Islander
1% Others



62% Total favor "increasing funding for local public transportation infrastructure in Mecklenburg County"

50% Total support "increasing county sales tax to fund public transportation infrastructure"

58% Total support "issuing bonds to fund public transportation infrastructure"

56% Total favor "increasing funding for local public transportation infrastructure in Mecklenburg County" after learning further specifics on the potential new taxes and fees.

© Anzalone Liszt Grove Research / NRDC Action Fund



Transformational Mobility Network
City Council Action Review
February 8, 2021