

# Coronavirus Relief Fund Update

**CITY MANAGER'S REPORT**  
**SEPTEMBER 8, 2020**



# Overview

- ◀ **Review Governor's Order: Phase 2.5**
- ◀ **Provide an update on Coronavirus Relief Funding (CRF)**
- ◀ **Recommendation for CRF Allocation**

# COVID-19 Update: State Actions

- ◀ **Governor Cooper moved to Phase 2.5 effective from September 4<sup>th</sup> to October 2<sup>nd</sup> at 5pm**
- ◀ **Major changes in Phase 2.5**
  - Gyms can operate at 30 percent capacity
  - Museums can operate at 50 percent capacity
  - Playgrounds are open
  - Increases indoor capacity from 10 to 25 people, outdoor capacity from 25 to 50 people
- ◀ **What remains in Phase 2.5**
  - Restaurants can operate at 50 percent capacity
  - Bars remain closed

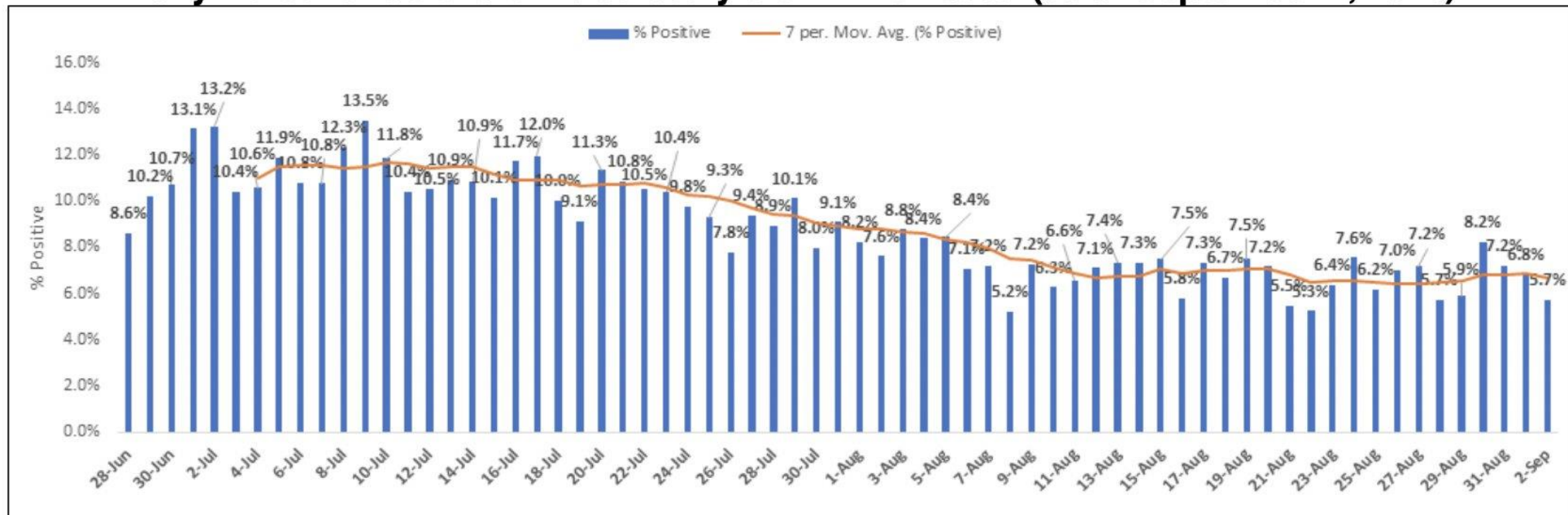
# COVID-19 Update: Data Snapshot

## ◀ Data Snapshot:

- Total Number of Confirmed Cases: 26,526
  - *Trending downward*
- Total Number of Deaths: 322
  - *Trending downward*
- Congregate care sites remain a concern
  - *34 congregate living sites*

# COVID-19 Update: Medical Trends

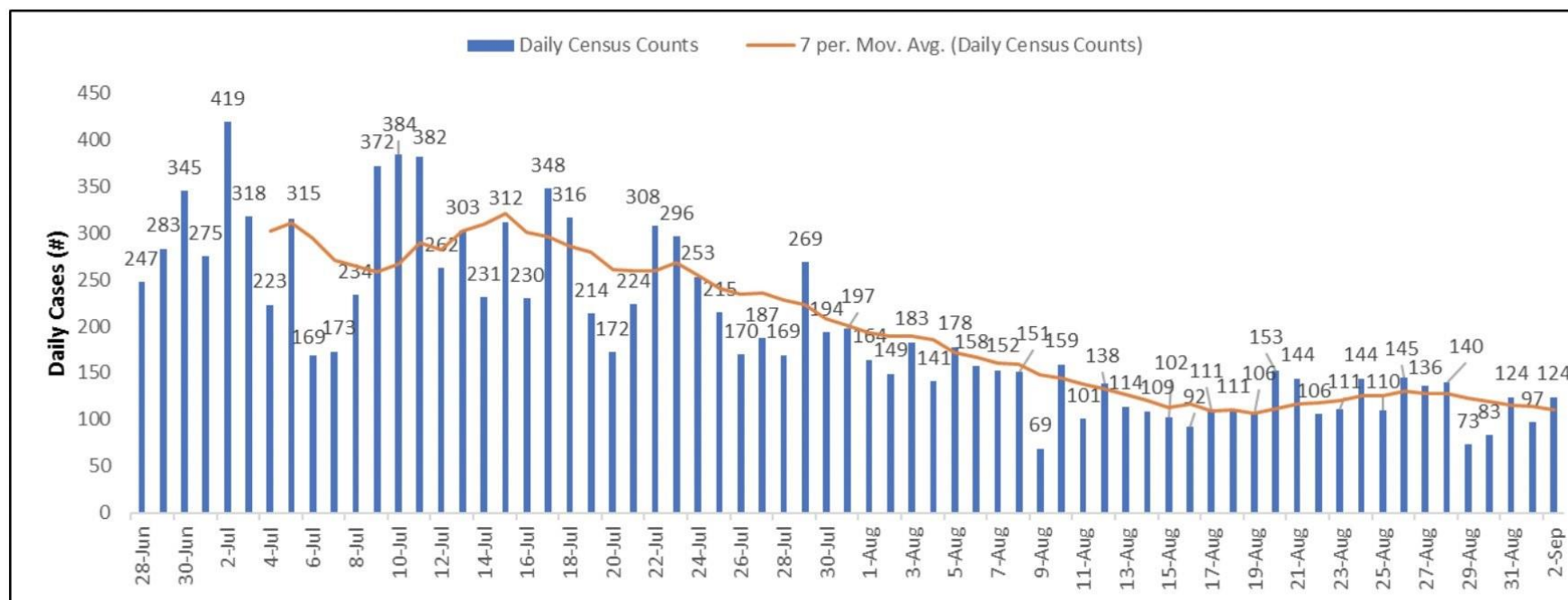
**Daily Percent Positive of Laboratory COVID-19 Tests<sup>1</sup> (as of September 2, 2020)**



<sup>1</sup> Data only include laboratory tests and confirmed cases reported by Atrium Health, Novant Health, CVS Health, Walgreens Pharmacy, and Tryon Medical Partners through September 2, 2020. CVS Health reported data beginning May 29, 2020. Walgreens reported data beginning July 14, 2020. Tryon Medical Partners reported data beginning August 11, 2020

# COVID-19 Update: Medical Trends

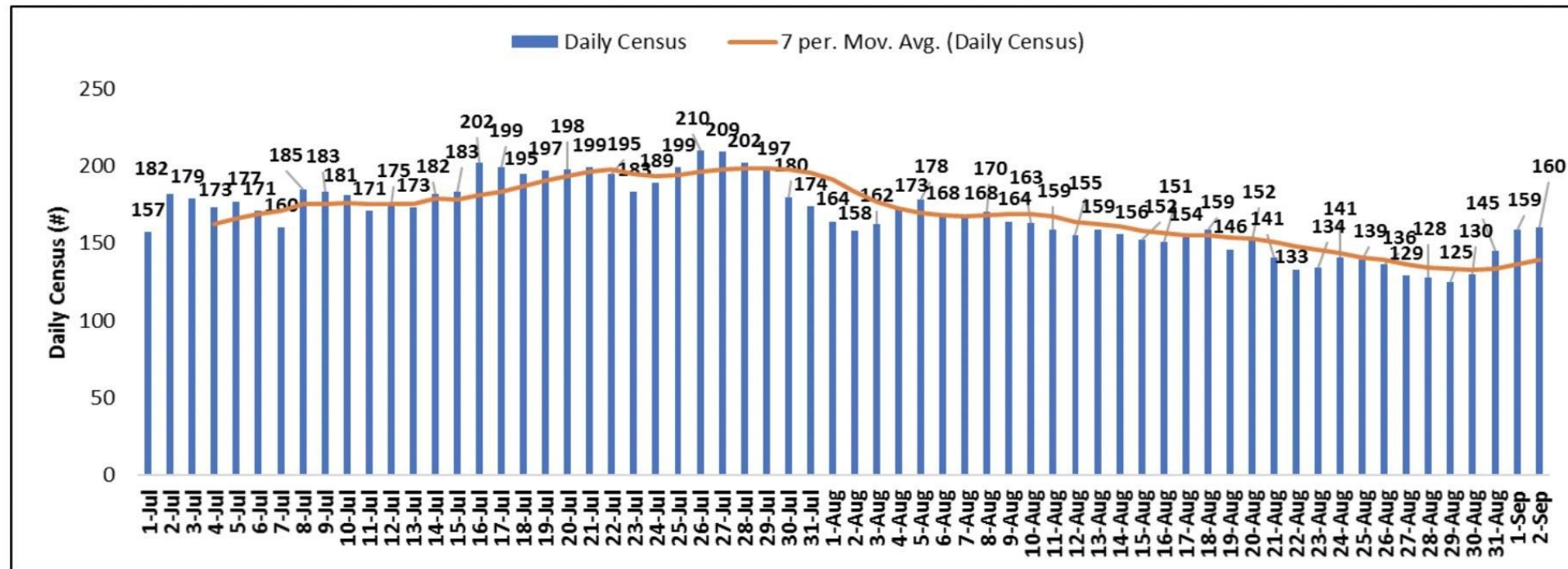
**Daily COVID-19 Cases Reported to MCPH by Date\***  
(as of September 2, 2020)



\*Beginning June 22, case counts were updated using a new reporting function in the state communicable disease management system. These counts include cases reported after the daily cut-off time of 5p.m. This approach ensures case counts are not artificially impacted by delays in lab results and case investigations.

# COVID-19 Update: Medical Trends

**Daily Hospital Census of Patients with Laboratory Confirmed COVID-19<sup>5</sup>**  
(as of September 2, 2020)



<sup>5</sup> Data include all patients hospitalized at Atrium Health and Novant Health acute care facilities in Mecklenburg County.

# COVID-19 Update: Local Compliance

## ◀ **Existing Joint Proclamation(local restrictions) expired**

- Written to be in effect concurrently with Phase 2 of the Governor's Order

## ◀ **Community must comply with Governor's Order**

## ◀ **No further action required by Mayor and Council at this time**

## ◀ **<https://www.nc.gov/covid19>**



# COVID-19 Update: Enforcement

◀ **Enforcement response driven by calls for service**

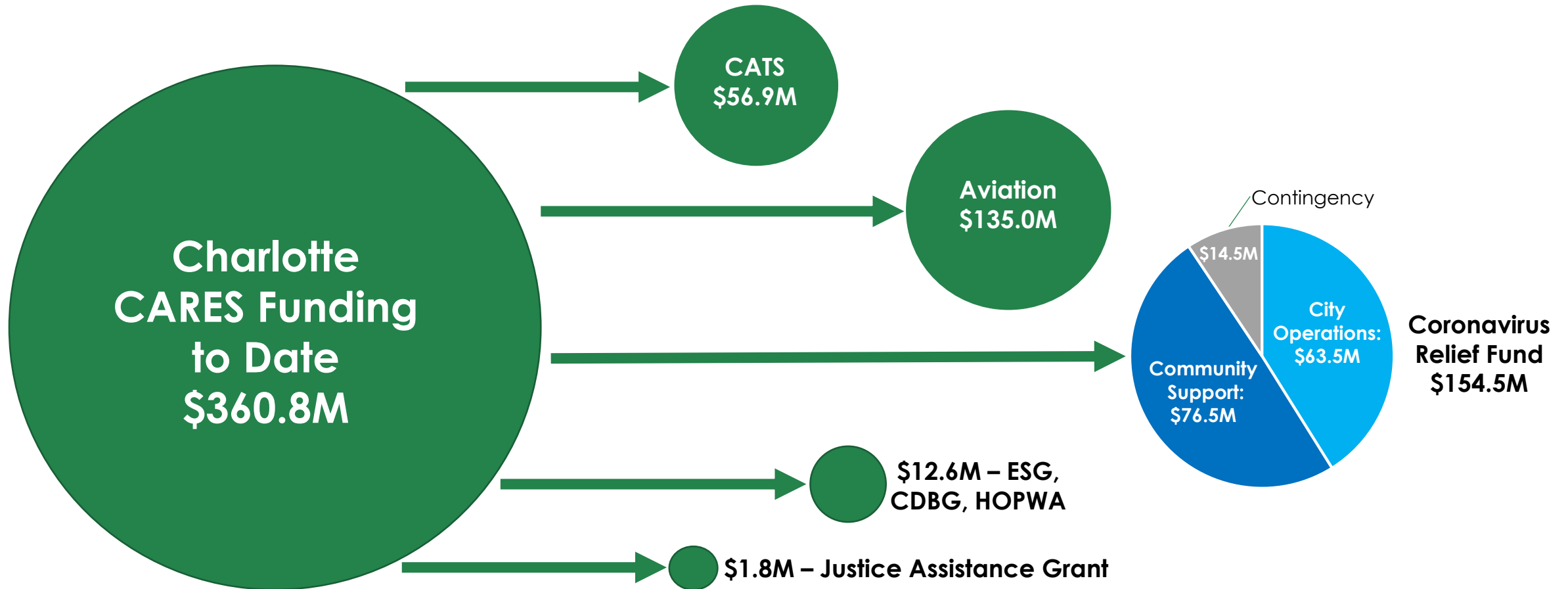
◀ **Balancing enforcement with:**

- Increasing violent crime rates
- Civil unrest
- Investigations and public safety

◀ **Alcohol Sale Updates:**

- Phase 2.5 clarifies restaurants vs. eating establishments
- Phase 2.5 outlined Alcohol Beverage Commission's role
- Limited to 11p.m. (*no change*)

# Federal COVID-19 Funding to Date

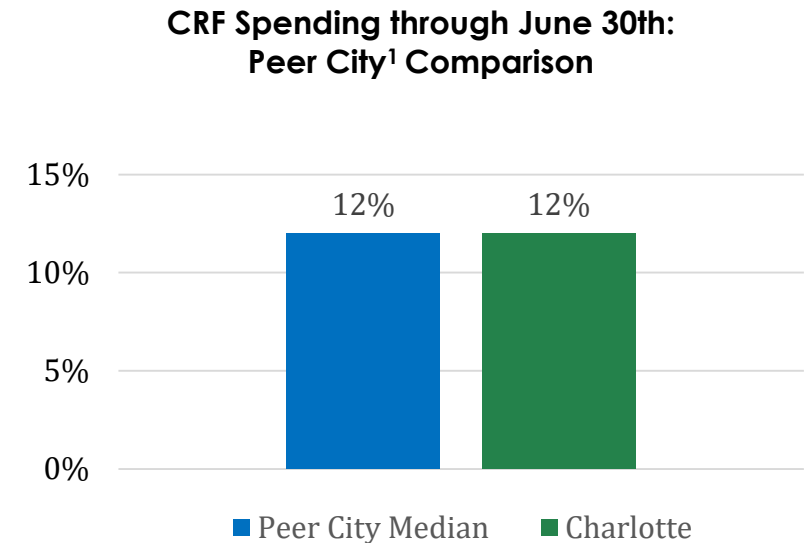


As presented August 10, 2020

# Coronavirus Relief Fund Benchmarking Insights

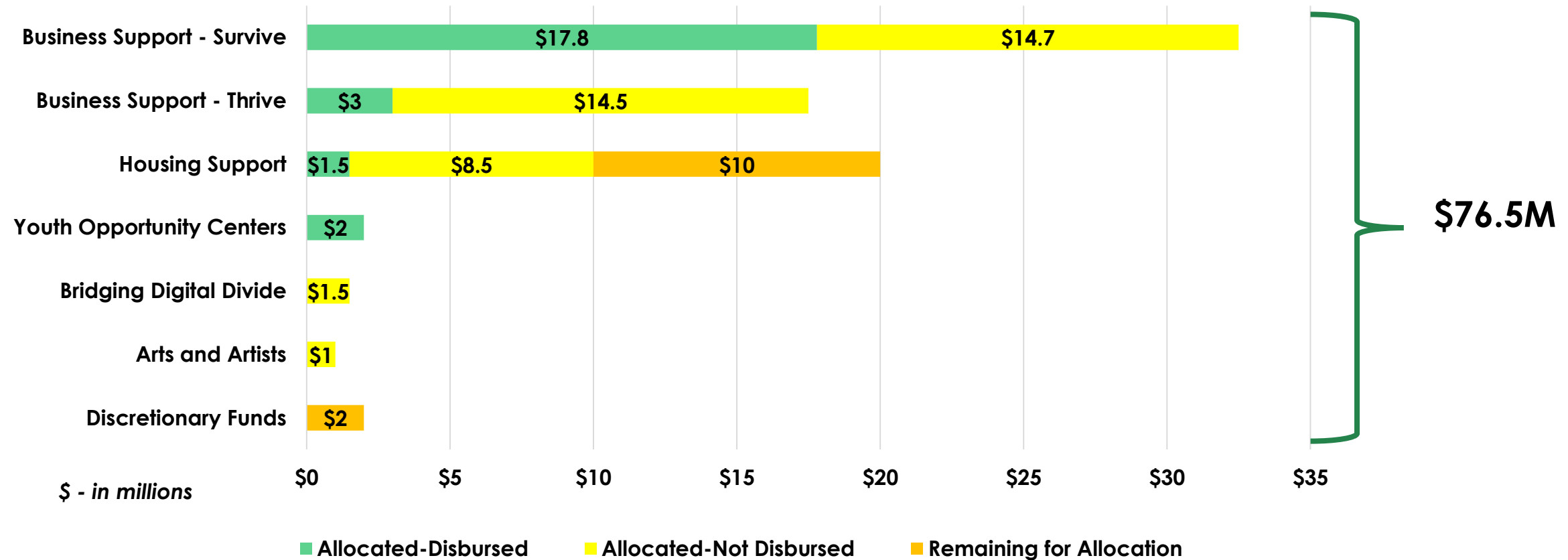
## ◀ Peer city<sup>1</sup> insights regarding CRF disbursements

- Payroll for public health/safety employees is the dominant spend category across the peer group for the period ending June 30
- CRF funding allocation decisions by peer group City Councils demonstrate a wide variety of investment priorities
- Small business relief and housing/ homelessness assistance are recurring themes across the peer group



<sup>1</sup> – Peer group includes 14 other CRF recipients with a similar scope of city operations

# Coronavirus Relief Fund: Community Support Investment Status<sup>1</sup>



<sup>1</sup> – Aggregate investment above [including Allocated and Remaining for Allocation] = \$76.5M, with disbursements through August 31, 2020

# Leveraging Resources to Support COVID-19 Recovery



**CHARLOTTE**

**City of Charlotte:**

**\$154.5m in CRF**

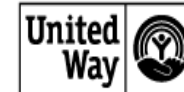
*[\$76.5m community investments]*



**Mecklenburg County:**

**\$39.2m in CRF**

*[\$15.2m community investments]*



United Way  
of Central Carolinas



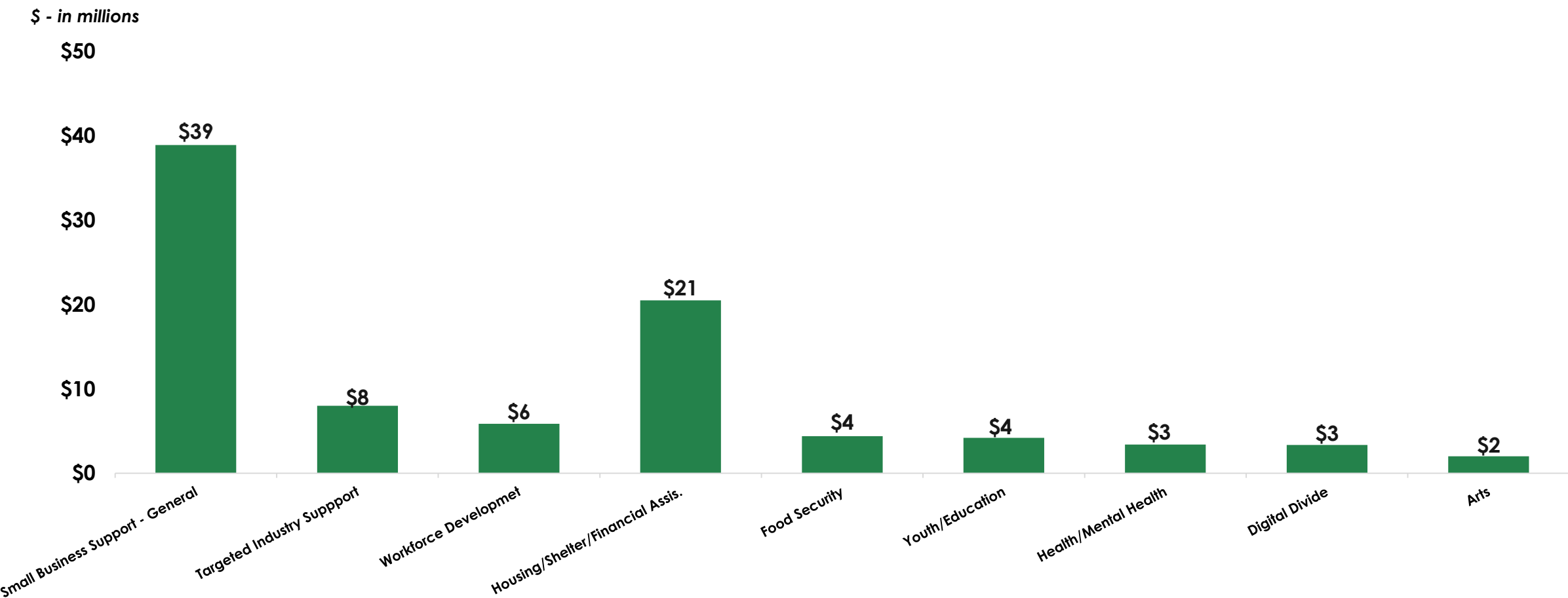
**COVID-19 Response Fund:**

*\$19.6m raised to date*

**\$111m in aggregate community investments**

# Leveraging Resources to Support COVID-19 Recovery

Summary of Existing Community Investment Allocations By City, County and COVID-19 Response Fund



# Additional Support Considerations

## ◀ Status of Funding Opportunities Discussed on August 10, 2020

Potential focus area	Status
Support focused on Hospitality Industry, Restaurants, Hotels <sup>1</sup>	
Support for Arts and Artists <sup>1</sup>	
Additional support for small business <sup>1</sup>	
Support for Housing and Homelessness	Ongoing
Additional support for public Wi-Fi	Ongoing
Utility Relief	Under Evaluation
Employee Assistance with Daycare	Under Evaluation
Youth Athletic Activities	Under Evaluation

<sup>1</sup> – Funding allocated during August 10 City Council meeting

# Supporting Remote Learning for Students

## ◀ **Recommendation:**

- *Allocate up to \$1.0m in CRF to support remote learning for Charlotte-Mecklenburg Schools Students*
- *Source: Remaining \$2.0m discretionary funds identified on August 10*



# Next Steps

- ◀ **Finalize plans for \$10 million Housing Support remaining for allocation consideration at the Great Neighborhoods Committee meeting in September**
- ◀ **Determine best use of remaining discretionary \$2.0 million [resulting from the FEMA reimbursement discussed on August 10]**
- ◀ **Monitor spend rate for all allocated programs, with any programming pivots brought to Council for consideration in October**
- ◀ **Discuss best use of \$14.5 million CRF contingency at the Council strategy retreat in October**