



Pandemic Mitigation Planning for Charlotte 2020 Republican National Convention Meetings



Jeffrey W. Runge, MD
Senior Health & Medical Advisor
10 AUG 2020



Planning Principles

- The Charlotte 2020 RNC meetings will be the largest sanctioned event in Charlotte since the onset of the pandemic with ~ 400 attendees
- All available measures will be employed to ensure the safety of attendees and the local community.
- Planning is (and has been since early May) a conjoined effort of an engaged partnership:
 - The RNC Committee on Arrangements
 - Charlotte Emergency Management
 - Mecklenburg County Health Department
 - Atrium Health and Novant Health
 - Mecklenburg County EMS (MEDIC)
- Given fluidity of the pandemic, plans will change with prevailing conditions through event completion.



Planning Doctrine

- All plans will comply with state and local health directives.
- No gathering is risk-free, but multiple layers of risk reduction can bring the risk level into the acceptable range.
- The top priority of convention planners is the safety and health of all attendees, support staff and the surrounding community.
- The plan is based on core capabilities of disease prevention, health protection, consequence mitigation and response, and recovery to a baseline status.
- The implementation of the plan depends on Critical Support Functions derived from various assets, including institutions of local, state and federal governments and the private sector.



Adherence to Science and Consensus Recommendations



- Common elements of consensus recommendations will be observed
 - Informing expectations of participating attendees prior to travel to Charlotte
 - Testing for the presence of COVID, prior to travel to Charlotte
 - Home isolation and avoidance of travel for COVID (+) persons
 - Re-testing of attendees on arrival and community support staff
 - Daily history for signs/symptoms of COVID and risk of transmission and physical observation by trained staff
 - Physical distancing protocols at all times, including meeting room configuration
 - Face covering in indoor spaces and anywhere when close contact cannot be avoided
 - Identification of potential attendees who are highly vulnerable to complications of infection
 - Automated recording of close contacts to aid health officials with contact identification and notification
 - Extensive and transparent communication of risks and mitigation with attendees and community





Disease Prevention and Health Protection

- Screening
 - All attendees will attest to certain risk factors and health limitations
 - Attendees with risk factors for complications of COVID will be identified and informed
 - Daily symptom and temperature checks – secondary screening by local health professionals
- Testing
 - Attendees will be tested for COVID 7 days prior to travel
 - Attendees will be re-tested by Novant Health upon arrival
 - Local community members in direct contact with traveling cohort will be tested by Atrium Health
- Isolation
 - Attendees will observe enhanced social distancing for 14 days prior to travel to Charlotte
 - Attendees who exhibit signs/symptoms while in Charlotte will be isolated pending results of testing



Participant Protection

- Constant communication re: compliance and reporting of new symptoms
- Cohort will be COVID (-) but all will be assumed to be transmissible and at risk of complications for purposes of compliance
- 100% mask wearing while in indoor public spaces and outdoors where distancing cannot be accomplished
- No unseated food & beverage; all food boxed or plated and served
- No social gatherings on site in excess of state Executive Orders
- If a COVID (+) contact with an attendee is detected, attendees will be quarantined for 14 days under order of the Mecklenburg County Health Director.
- Anyone exhibiting symptoms or testing (+) will be isolated
- Post-meeting follow up at 5, 14 and 21 days by convention staff or contractors to assess for symptoms or confirmed Dx of COVID
 - To initiate contact notification
 - To assess results of countermeasures



Mitigation and Response

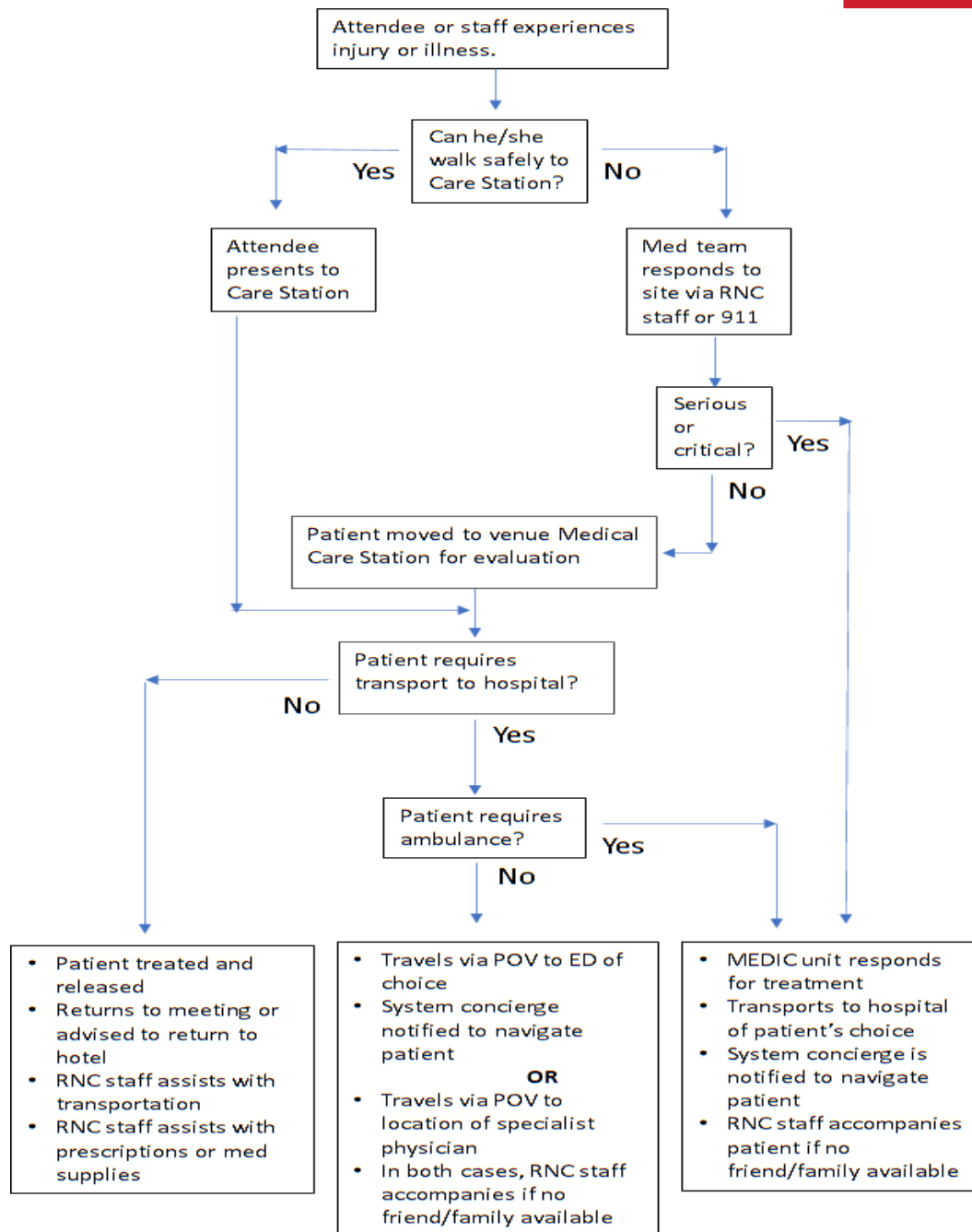
- Both hospital systems providing medical support
 - Novant has procured additional testing capability to test official attendees and will conduct secondary screening at meeting hotel
 - Atrium Event Medicine will test local community support staff, perform secondary screening, evaluation and non-complex treatment at the CCC for evaluation
- Attendees and staff will have contacts monitored passively via a technology that protects privacy but will enhance the ability to perform contact identification and notification.
- RNC convention staff will support any attendee who requires isolation or quarantine
- Attendees will have immediate access to telemedicine at both health systems and a range of subspecialists for care outside of the emergency departments.

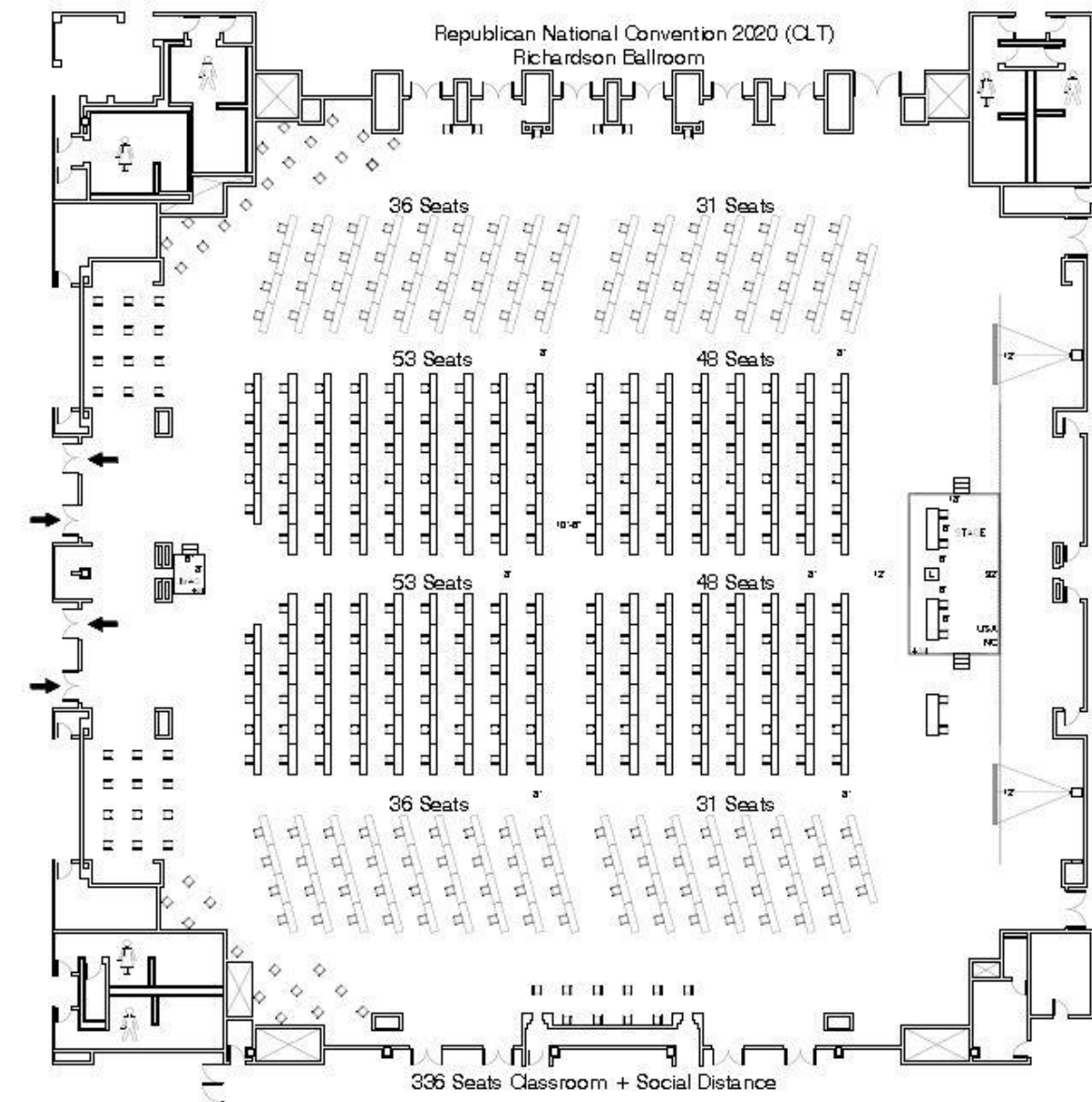


Critical Support Functions and Leads

- Communications – RNC convention staff
- Transportation – RNC Convention staff with private bus operators and public safety
- Engineering and infrastructure – CCC and RNC convention staff
- Information and planning – the cross-functional planning cell
- Housing and Food – RNC convention staff with private sector
- Logistics – RNC convention staff and public safety
- Medical services – Atrium, Novant and MEDIC
- Safety and Security – USSS, CMPD and private sector









Questions and Feedback

