



Tree Canopy Assessment

Engineering & Property Management Department
Office of the City Arborist

February 11, 2019

- Current Programs & Initiatives
- Canopy Assessment Approach & Findings
- Policy Question: Tree Canopy Goal



OVERVIEW OF TREE PROGRAMS

CITY TREE PROGRAMS/INITIATIVES

- Tree City USA for 39 Years
 - Tree Ordinance
 - Planting & Stewardship
 - Preservation
 - Storm Response
 - Cankerworm Banding & Emerald Ash Borer Control
 - Arbor Day Observance and Celebration
 - TreesCharlotte Public/Private/Non-Profit Partnership
 - Pilot Project to Assist Homeowners
-
- 2011: 50% Tree Canopy by 2050 Aspirational Goal
 - 2017: Urban Forest Master Plan



City Arborist Services: Tree Planting,
Maintenance, Pruning, Preservation,
Storm Response, Pest Management

\$5.1M

TreesCharlotte



Endowment Cash	\$ 250,000
Contribution Cash	\$ 100,000
In-Kind Assistance	\$ 400,000



CANOPY ASSESSMENT

CANOPY ASSESSMENT

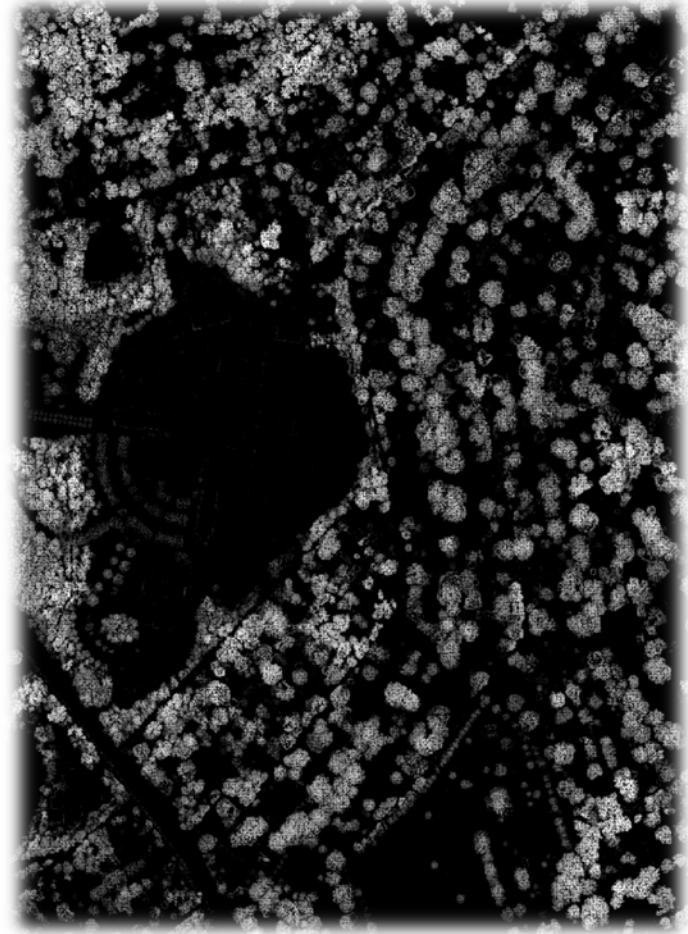
- Specialized analysis based on aerial data
- 2012: 47% canopy coverage
- Reassess every 5 years
- Data quality improvements and the nature of the canopy make trend analyses challenging
- Professional Consultant:
Planit GEO



DATA SOURCES



May 2016 National Agriculture
Imagery Program Aerial Imagery



Winter 2016-17 NC Emergency Management
LiDAR (Light Detection and Ranging)

GAINS AND LOSSES



Gain (street & median trees)

Trees planted in 2009
Not captured in 2012



Gain (yellow area)

Logged in 2009
Trees not tall enough in 2012



Loss (red area)

Lawrence Orr Elementary
Built in 2014

ASSESSMENT RESULTS

Comparisons Using 2018 City Boundary

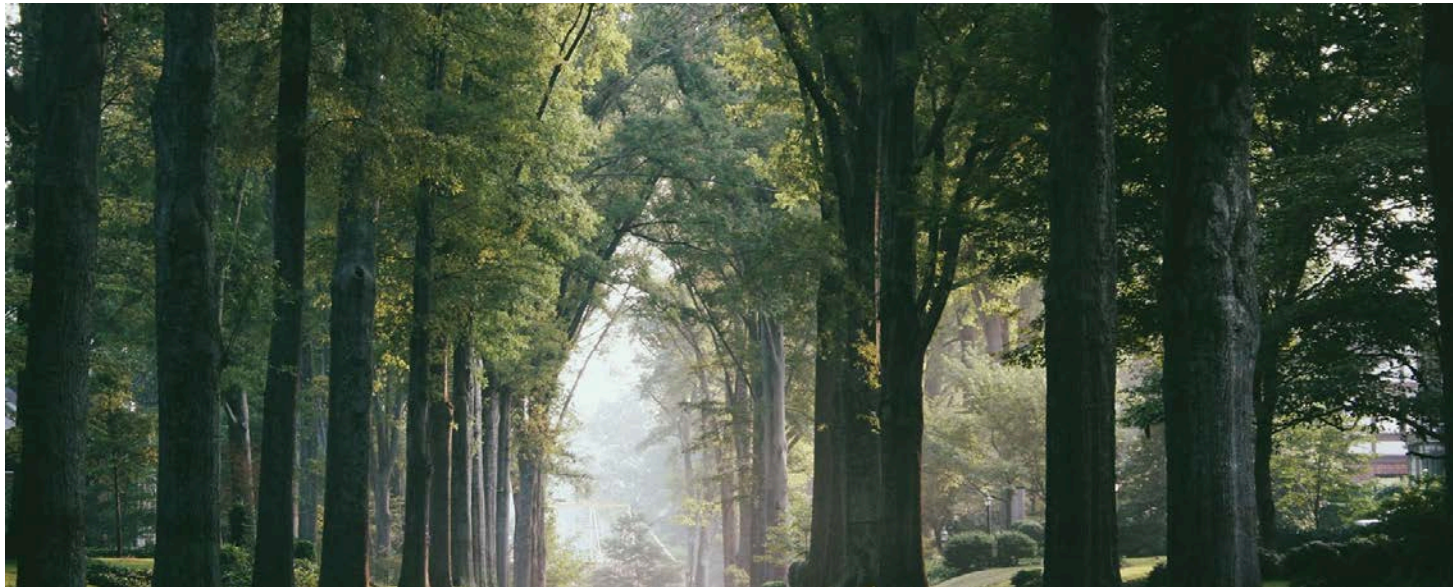
- 2012 data: 47.1% tree canopy*
- 2016 data: 46.8% tree canopy*
- .3% loss of tree canopy

* +/- .9% margin of error



FURTHER RECOMMENDATIONS

- Evaluate locations of and reasons for loss and gain
- Evaluate potential planting areas (neighborhoods, land use categories, etc.)
- Assess at regular intervals
- Share assessment results



MOVING FORWARD

MOVING FORWARD

- 
- Use the data to understand opportunities to keep and grow the canopy
 - Re-evaluate tree canopy goal
 - Goal(s) that describe value of the canopy
 - Reinforce tree canopy benefits
 - Shade/Energy Savings/Heat Island Effect
 - Air Quality/CO2 Removal and Storage
 - Rain: Rainfall Intercepted
 - Aesthetics/Property Values
 - Health
 - Coordinate with:
 - Strategic Energy Action Plan
 - Comprehensive Plan
 - Unified Development Ordinance



Policy Question: Determine what Charlotte's Tree Canopy Goal(s) should be

- Environment Committee will review the analysis and most appropriate goal-setting approaches
 - Reflecting value of trees in urban settings and neighborhoods
 - Preparing for Comprehensive Plan and UDO
 - Aligned with other city goals

//

~ Author / source here

ASSESSMENT RESULTS

Comparisons Using 2018 City Boundary

- 2012 data: 47.1% tree canopy*
- 2016 data: 46.8% tree canopy*
- .3% loss of tree canopy

* +/- .9% margin of error



Considering margin of error,

