

Innovative Request:

- 1. To modify the setbacks as shown to be 15 feet measured from the back of the existing curb as depicted on the plan**
- 2. The highlighted units will have a setback 1, 1.5 and 2 feet from the back of the sidewalk/ROW line.**

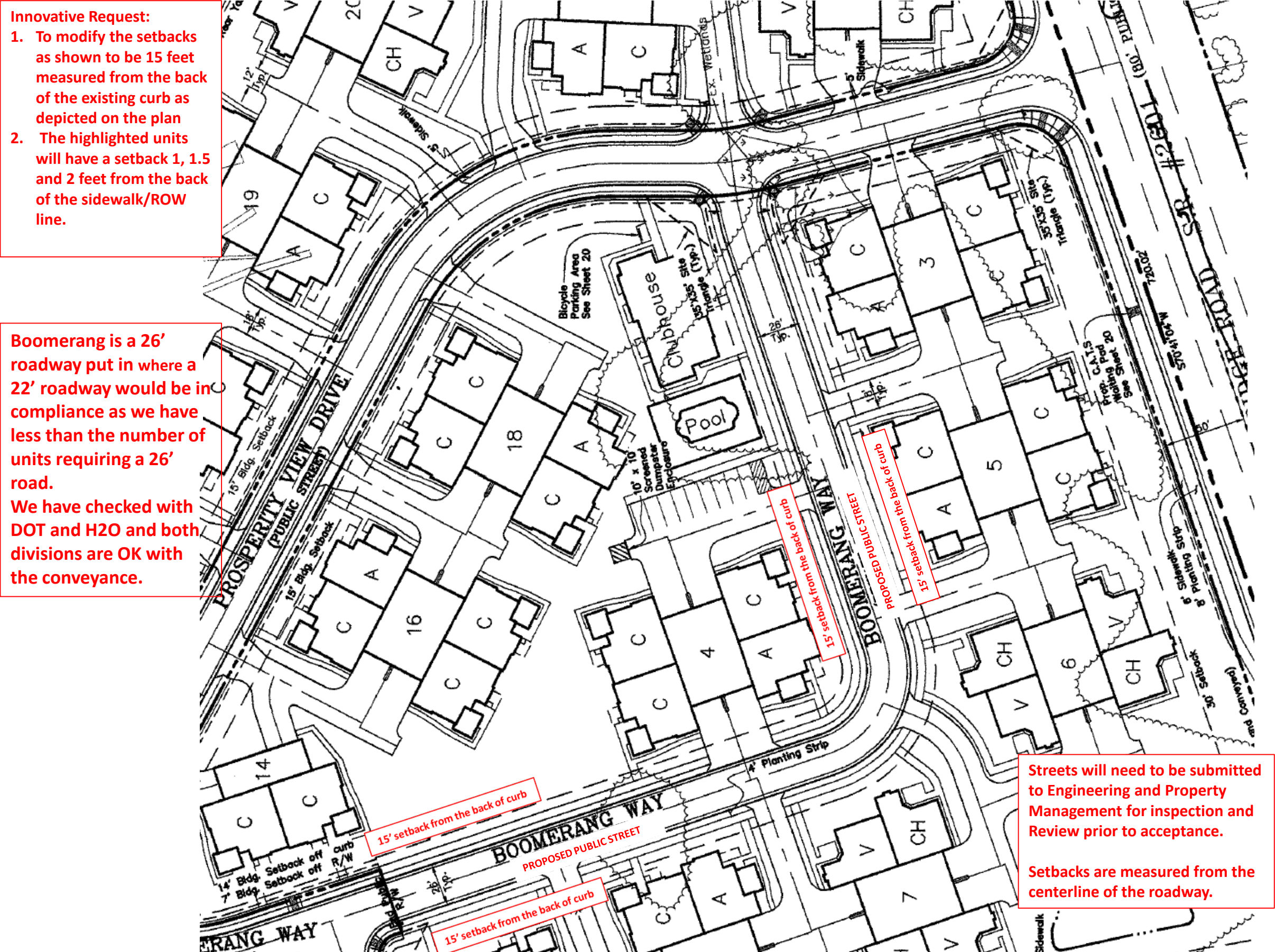
- Innovative Request:**
- 1. To modify the setbacks as shown to be 15 feet measured from the back of the existing curb as depicted on the plan**
 - 2. The highlighted units will have a setback 1, 1.5 and 2 feet from the back of the sidewalk/ROW line.**

Boomerang is a 26' roadway put in where a 22' roadway would be in compliance as we have less than the number of units requiring a 26' road.

We have checked with DOT and H2O and both divisions are OK with the conveyance.

Boomerang is a 26' roadway put in where a 22' roadway would be in compliance as we have less than the number of units requiring a 26' road.

We have checked with DOT and H2O and both divisions are OK with the conveyance.



Streets will need to be submitted to Engineering and Property Management for inspection and Review prior to acceptance.

Setbacks are measured from the centerline of the roadway.

Streets will need to be submitted to Engineering and Property Management for inspection and Review prior to acceptance.

Setbacks are measured from the centerline of the roadway.