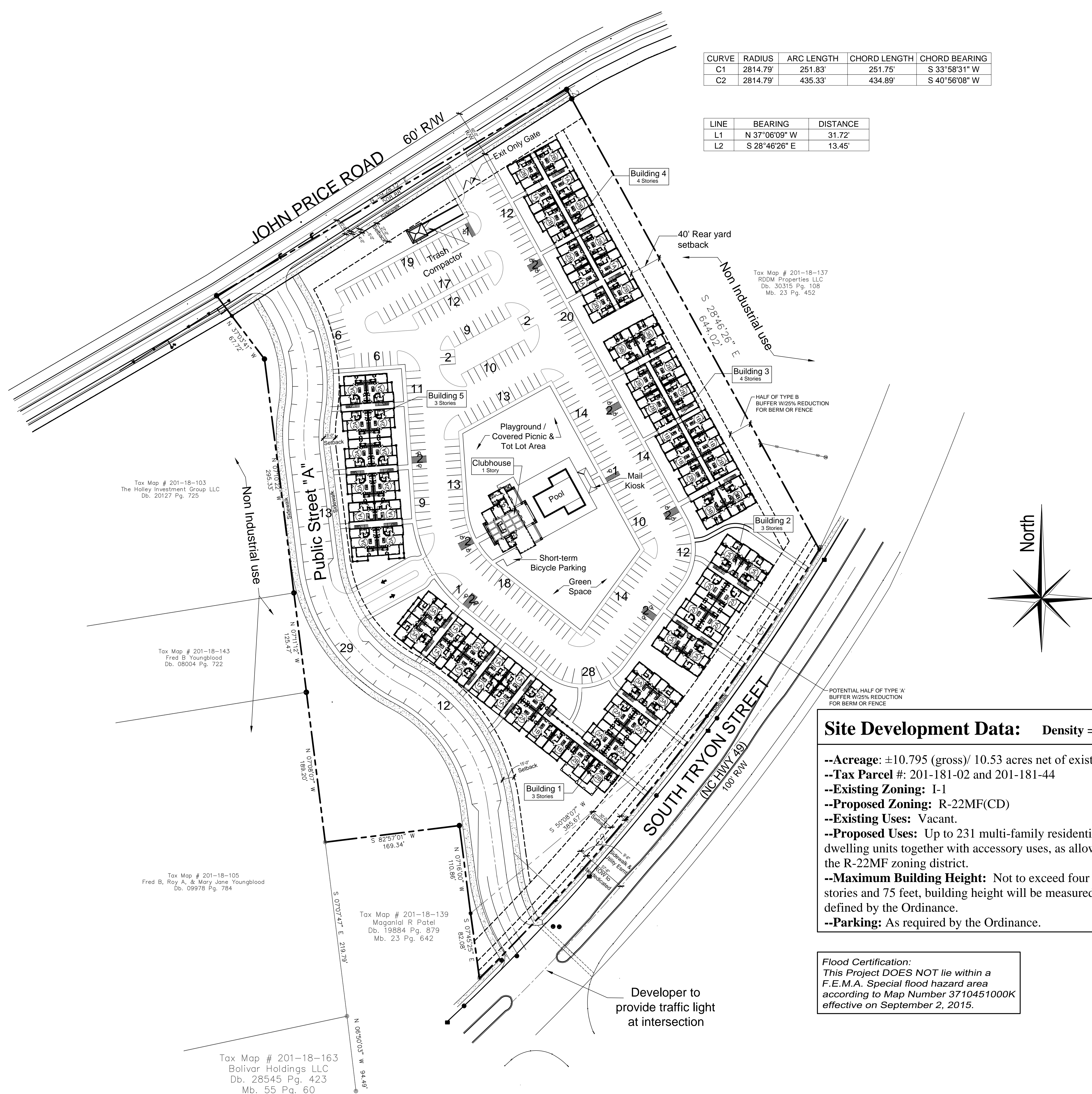


LINE	BEARING	DISTANCE
L1	N 37°06'09" W	31.72'
L2	S 28°46'26" E	13.45'



	<u>LEGEND</u>
	WELL
WV	WATER VALVE
WT	WATER METER
FB	CABLE BOX
FH	FIRE HYDRANT
LP	YARD LIGHT
UP	UTILITY POLE
TP	TELEPHONE PEDESTAL
IP	POWER TRANSFORMER
CO	SPRINKLER CONTROL VALVE
∞	CLEAN OUT
SS	SANITARY SEWER MANHOLE
SS	SANITARY SEWER LINE
SD	STORM DRAIN MANHOLE
SD	STORM DRAIN CATCH BASIN
SD	STORM DRAIN LINE
X	FENCE LINE
OHU	OVER HEAD UTILITY
SB	SETBACK LINE
◎	FOUND PROPERTY CORNER
●	SET PROPERTY CORNER
△	CALCULATED POINT

© 2018 Shapiro & Company Architects, Inc.  
Designs, drawings, and illustrations, contained herein, are protected as an architectural work under section 102 of the Copyright act, 17 U.S.C., as amended on December 1, 1990. Design, drawings, and illustrations may not be reused, copied, or redrawn for any purpose without the written permission of Shapiro & Company Architects, Inc.

**CONSULTANT NAME:** Pittman Professional  
Land Surveying  
P.O. Box 1512, Fort Mill  
SC 29716  
Ph: 803.547.7369  
[www.PPLSSURVEY.COM](http://www.PPLSSURVEY.COM)

ER NAME: **Elmington  
Capitol Group**  
118 16th Street  
Nashville, Tennessee

# Steele Creek Flats

Charlotte, North Carolina

[illegible]

STAMP:

PROJECT NUMBER:	18030
DATE:	11/30/18

SHEET TITLE:

Site Plan

SHEET NUMBER:

# A 101

# Site Plan

Scale: 1" = 50'



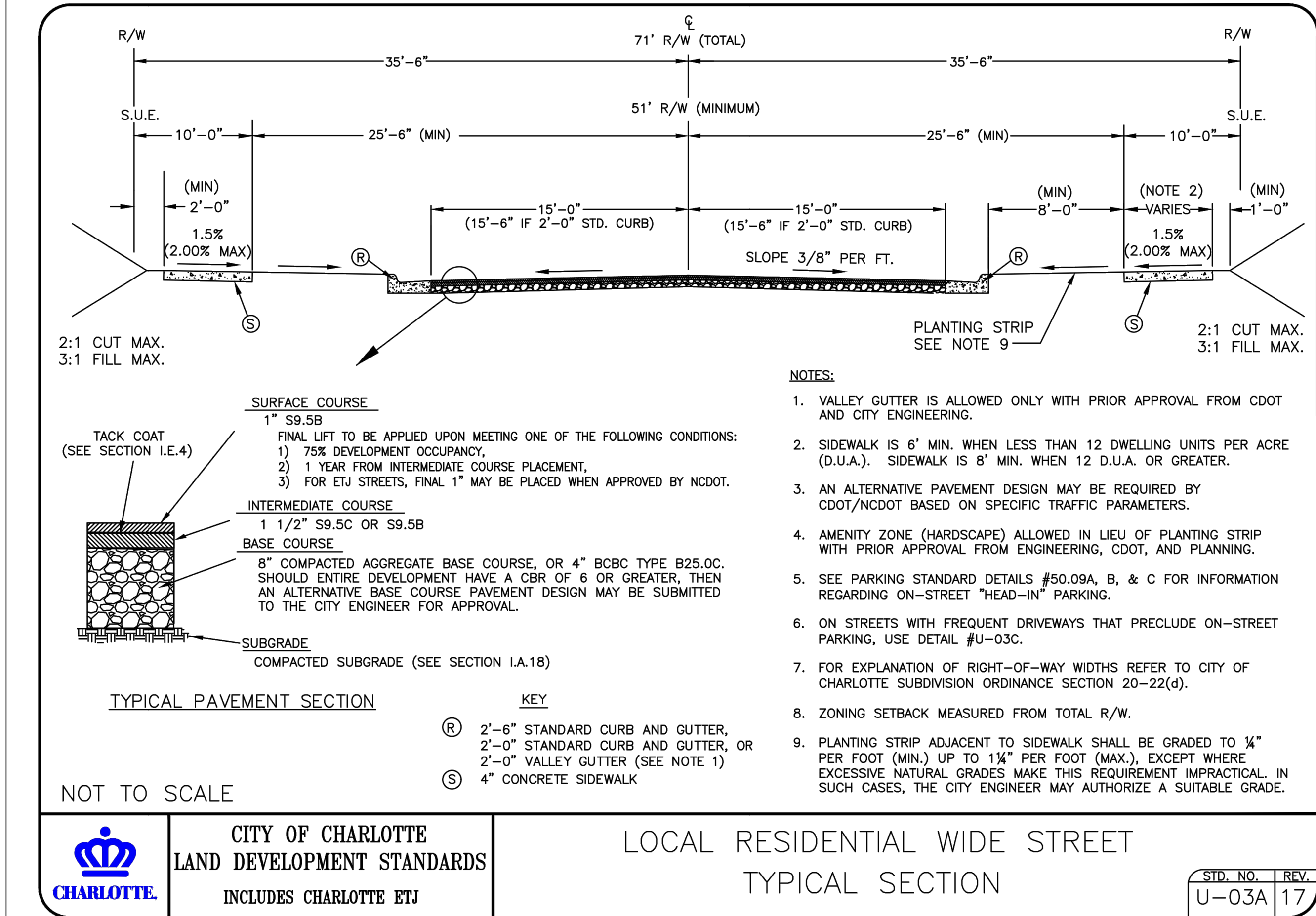
Shapiro & Company  
architects, p.c.  
Memphis Office:  
4646 Poplar Ave., Suite 517  
Memphis, TN 38117  
Ph: 901.685.9001  
Fax: 901.685.9054  
www.shapiroandco.com

© 2018 Shapiro & Company Architects, Inc.  
Designs, drawings, and illustrations, contained herein, are protected as an architectural work under section 102 of the Copyright act, 17 U.S.C., as amended on December 1, 1990. Design, drawings, and illustrations may not be reused, copied, or redrawn for any purpose without the written permission of Shapiro & Company Architects, Inc.

Pittman Professional  
Land Surveying  
P.O. Box 1512, Fort Mill  
SC 29716  
Ph: 803.547.7369  
www.PPLSSURVEY.COM

Elmington  
Capitol Group  
118 16th Street  
Nashville, Tennessee

Steele Creek  
Flats  
Charlotte, North Carolina



NO.	DESCRIPTION/ REVISIONS:	DATE:

STAMP:

PROJECT NUMBER: 18030  
DATE: 11/30/18

SHEET TITLE:  
Street Section

SHEET NUMBER:  
A 101a



