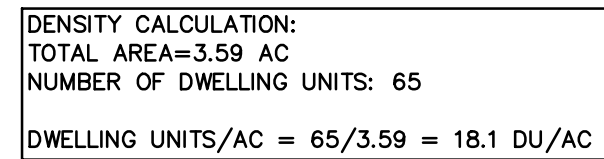




		ACCESSIBLE RAMPS
TYPE A	TYPE B	TYPE C
		CENTERLINE
		PROPERTY LINE
		SETBACK
		SANITARY SEWER EASEMENT
		STORM DRAINAGE EASEMENT
		LOT LINE
		CURB AND GUTTER
		CONCRETE SIDEWALK/PAD
		TREESAVE
		URBAN OPEN SPACE
		HEAVY DUTY CONCRETE PAVEMENT



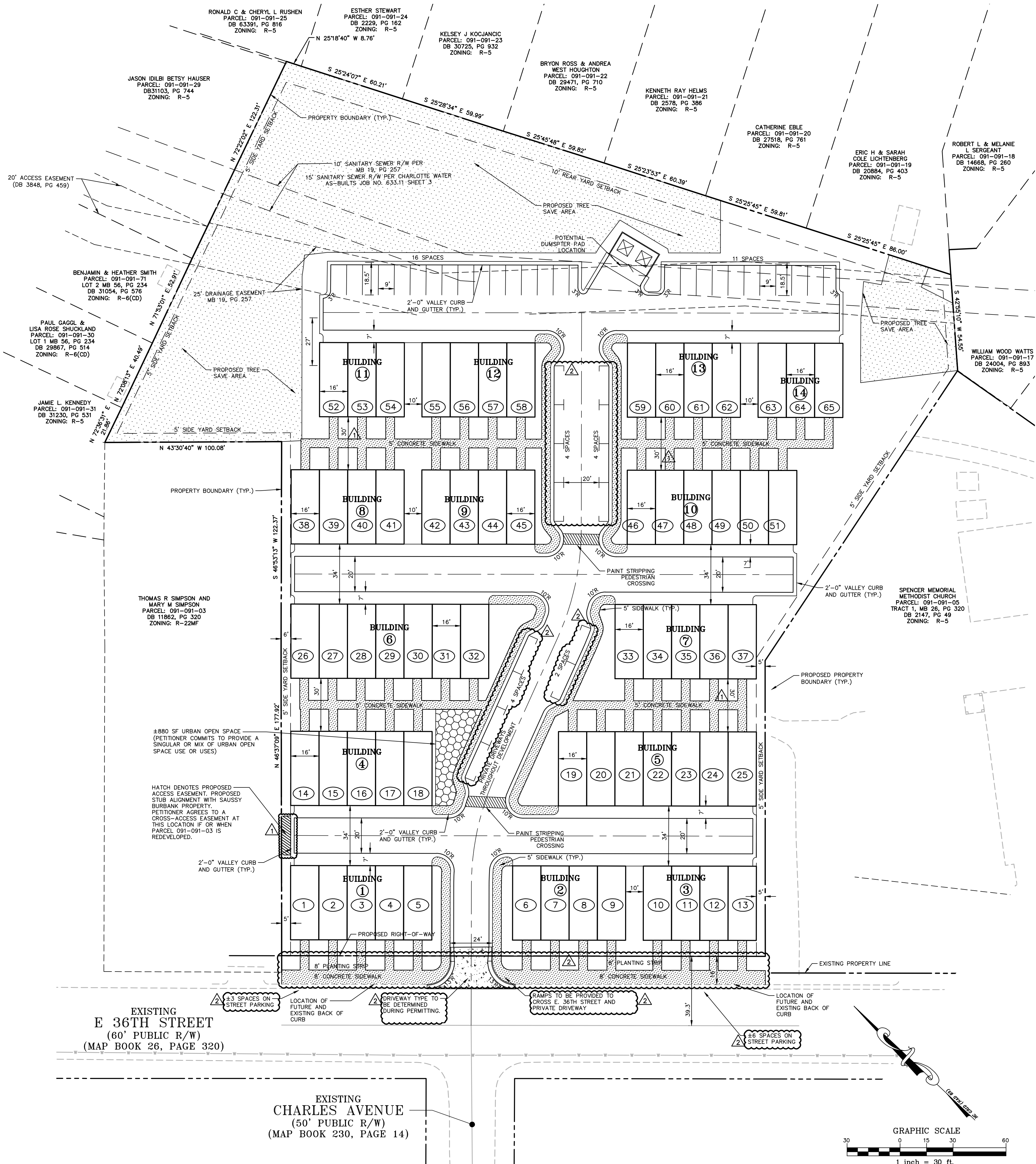
REZONING CASE NUMBER: 2018-099



2 NOTE:
PETITIONER INTENDS TO PROVIDE AN ALTERNATIVE STREETSCAPE PLAN ALONG EAST 36TH STREET, SEE ABOVE. HOWEVER, IF DURING THE DESIGN AND PERMITTING PHASE OF DEVELOPMENT IT IS DETERMINED THAT THIS ALTERNATIVE STREETSCAPE PLAN IS NOT APPROVED, THE PETITIONER WILL PROVIDE A STREETSCAPE PLAN IN ACCORDANCE WITH THE CITY'S TYPICAL STREETSCAPE STANDARDS.



CONTRACTOR SHALL NOTIFY "NC811" (811) OR (1-800-632-4949) AT LEAST 3 FULL BUSINESS DAYS PRIOR TO BEGINNING CONSTRUCTION OR EXCAVATION TO HAVE EXISTING UTILITIES LOCATED. CONTRACTOR SHALL CONTACT ANY LOCAL UTILITIES THAT PROVIDE THEIR OWN LOCATOR SERVICES INDEPENDENT OF "NC811". REPORT ANY DISCREPANCIES TO THE ENGINEER IMMEDIATELY.



PRELIMINARY DRAWING - NOT RELEASED FOR CONSTRUCTION

MCADAMS

1	2018-10-15 REVISIONS PER 1ST CITY REVIEW
2	2018-11-26 REVISIONS PER 2ND CITY REVIEW

SHEA HOMES
8008 CORPORATE CENTER DR
SUITE 300
CHARLOTTE, NC 28226

LANDINGS AT NODA
PRELIMINARY DRAWINGS
1025 EAST 36TH STREET
CHARLOTTE, NORTH CAROLINA
REZONING PLAN

PROJECT NO. SHH-17020
 FILENAME: SHH17020-S1
 CHECKED BY: RMR
 DRAWN BY: CAR
 SCALE: 1"=30'
 DATE: 08-27-2018
 SHEET NO. D3.1



