



# CHARLOTTE GATEWAY STATION

OCTOBER 1, 2018

# What is the Charlotte Gateway Station?

---



## 1. A much-needed **new Amtrak station**

- Current station is small and outdated



## 2. Creates high-quality **connections between multiple modes of transportation**

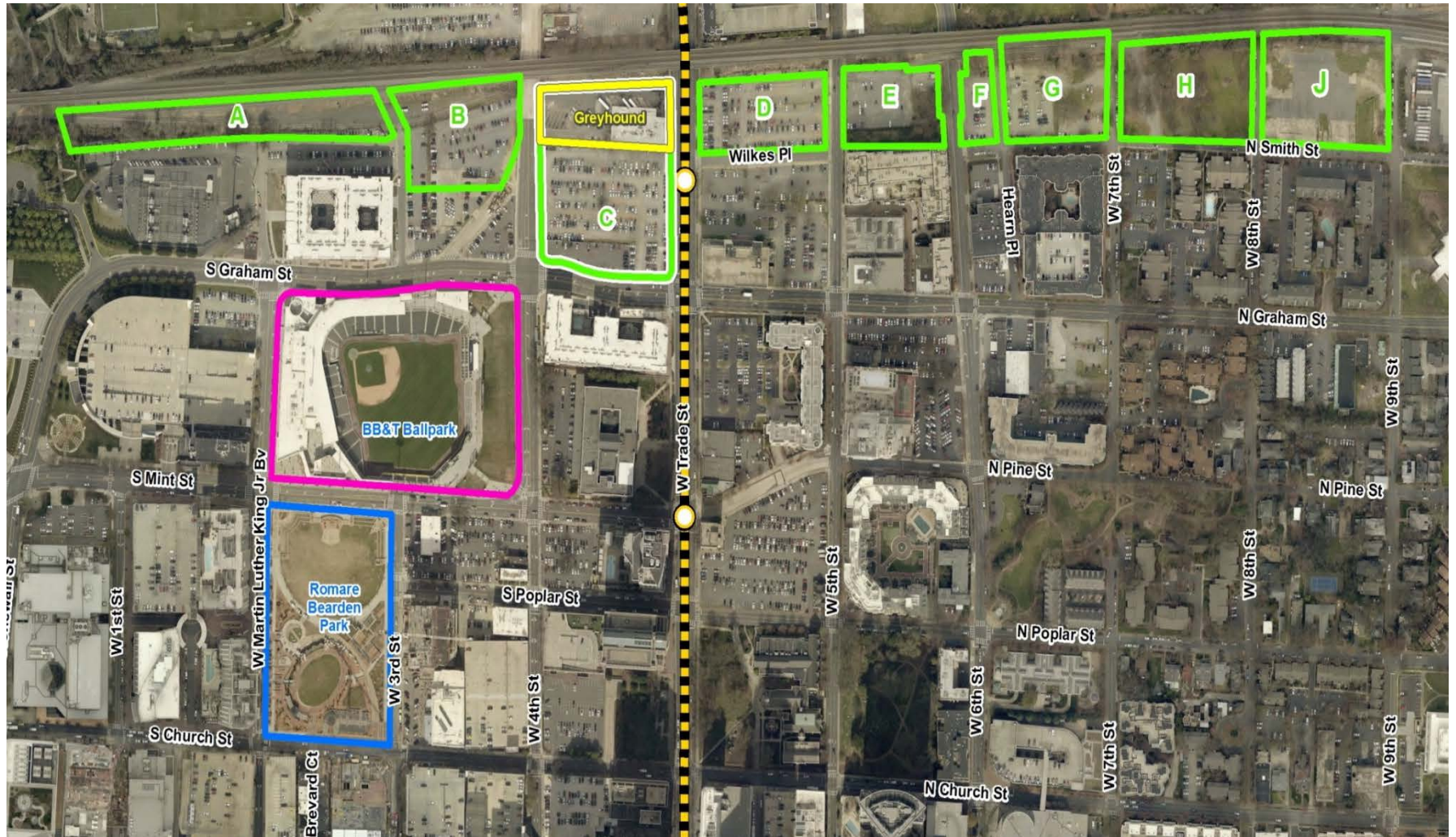
- Local and intercity bus service, the CityLYNX Gold Line streetcar, and Amtrak rail service will converge at the station



## 3. Establishes **new activity center** to bridge gaps in Center City

- Range of land uses will constitute a vibrant hub that serves a wide range of local development goals

# Publically Owned Land



# Charlotte Gateway

---

## Steering Committee

NCDOT



City



County



Center City  
Partners



At Large



# Charlotte Gateway Steering Committee

---

## **Purpose & Goal:**

To provide:

- Clarity to developer partner
- Efficiency in addressing questions
- Ease of decision making to bring back to City Council and NCDOT Board

## **Schedule:**

- City Council Vote: October 8
- NCDOT Board Vote: October 11
- Release RFQ: Late October
- Short List Developer Partners: Early 2019

