

**Wilmore Elementary School
428 West Boulevard**

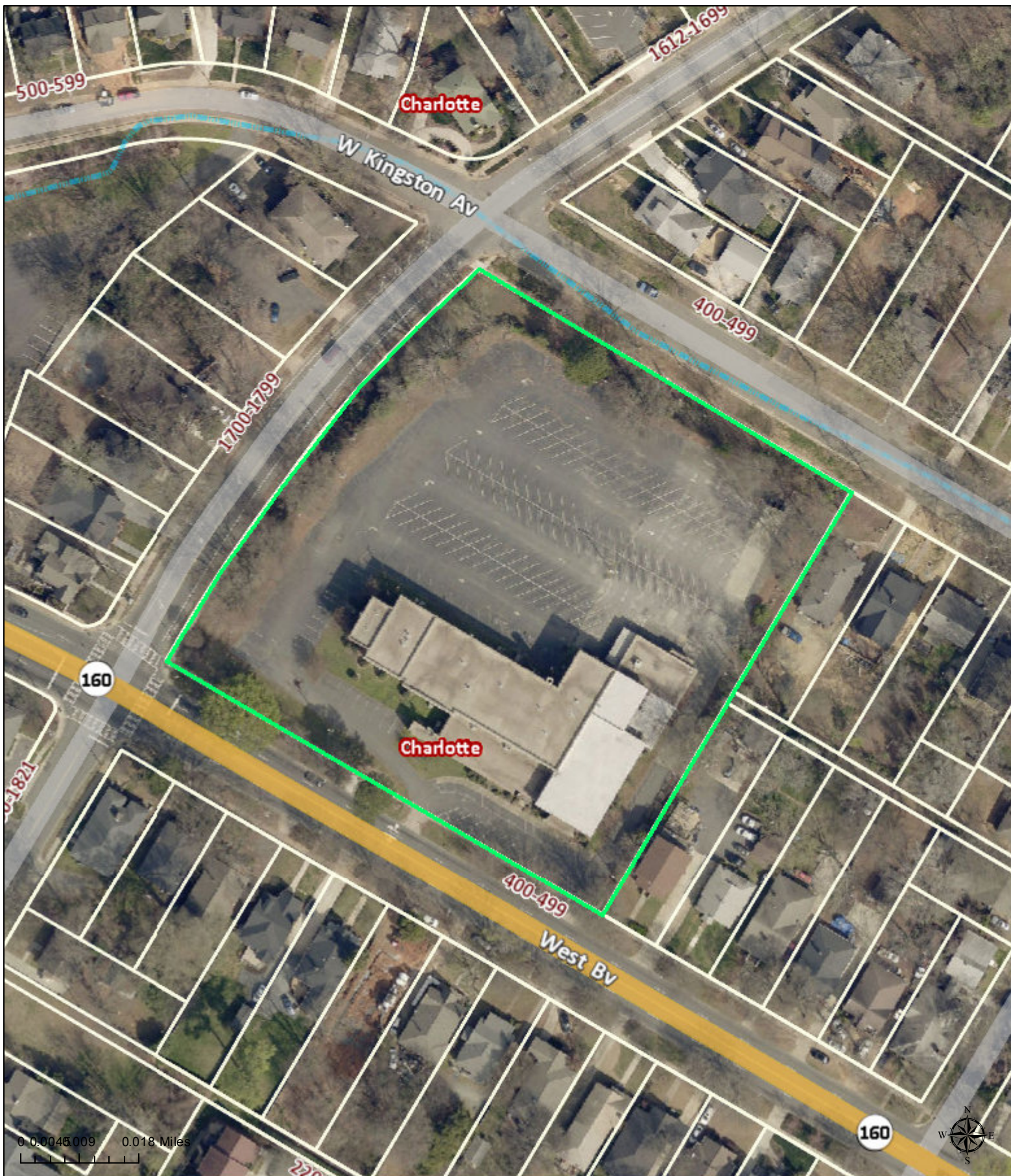


The Wilmore Elementary School is the only school that was erected in Wilmore, a working-class suburb established in 1906 by the Suburban Realty Company. The architect of the original section of Wilmore Elementary School was Louis H. Asbury, Sr., the first native North Carolinian to belong to the American Institute of Architects and an architect of local and regional importance. The architects of additions to the school were Martin E. Boyer, Jr. and Tebee Hawkins. Both were architects of local note. Louis Asbury designed four schools for the Charlotte Board of School Commissioners. The original plans for these schools illustrate the design philosophy that influenced school plans in the 1920s. One school designed by Asbury does not remain -- Seversville. Two that survive, Morgan School and Park Hutchinson School, are local historic landmarks. The fourth, Wilmore Elementary School, has not been designated as a historic landmark. It should become a local historic landmark to give recognition and protection to all of the extant school designs in Charlotte by Asbury in the 1920s. The Wilmore Elementary School documents the evolution of the Wilmore neighborhood from an all-white suburb of the early 1900s, to a neighborhood desegregating in the 1960s, 1970s, and 1980s, to a neighborhood experiencing revitalization today.

Polaris 3G Map – Mecklenburg County, North Carolina

Wilmore Elementary School

Date Printed: 12/22/2017 12:20:12 PM



This map or report is prepared for the inventory of real property within Mecklenburg County and is compiled from recorded deeds, plats, tax maps, surveys, planimetric maps, and other public records and data. Users of this map or report are hereby notified that the aforementioned public primary information sources should be consulted for verification. Mecklenburg County and its mapping contractors assume no legal responsibility for the information contained herein.