

BELGATE
REZONING PETITION
CHARLOTTE, NORTH CAROLINA

OWNER/
DEVELOPER

Crescent Resources, LLC
400 S. Tryon Street, Suite 1300
Charlotte, NC 28285
980.321.6000

LANDSCAPE ARCHITECT

LandDesign, Inc.
223 North Graham St.
Charlotte, NC 28202
704.333.0325

SHEET INDEX:		
		SUBMITTED
RZ-1	Technical Data Sheet	01/28/08
RZ-2	Conceptual Site Plan	01/28/08
RZ-3	Development Standards	01/28/08
RZ-4	Architectural - Retail Shops	03/25/08
RZ-5	Architectural - Multi-Family	03/25/08
RZ-6	Architectural - Furniture Row	03/25/08
RZ-7	IKEA Buffer Exhibit	05/05/08

TRANSPORTATION

Kimley-Horn and Associates, Inc.
465 I Charlotte Park Drive, Suite 300
Charlotte, NC 28217
704.333.5131

ZONING CONSULTANT

Kennedy, Covington, Lodbell,
and Hickman, LLP
Hearst Tower, 47th Floor
214 N. Tryon St.
Charlotte, NC 28202
704.331.7400

APPROVED BY
CITY COUNCIL
MAY 18 2008

DATE: 01/28/08
DESIGNED BY: JST
CHECKED BY: JST
SCALE: 1"=100'
PROJECT #: 000794
SHEET #:
Cover

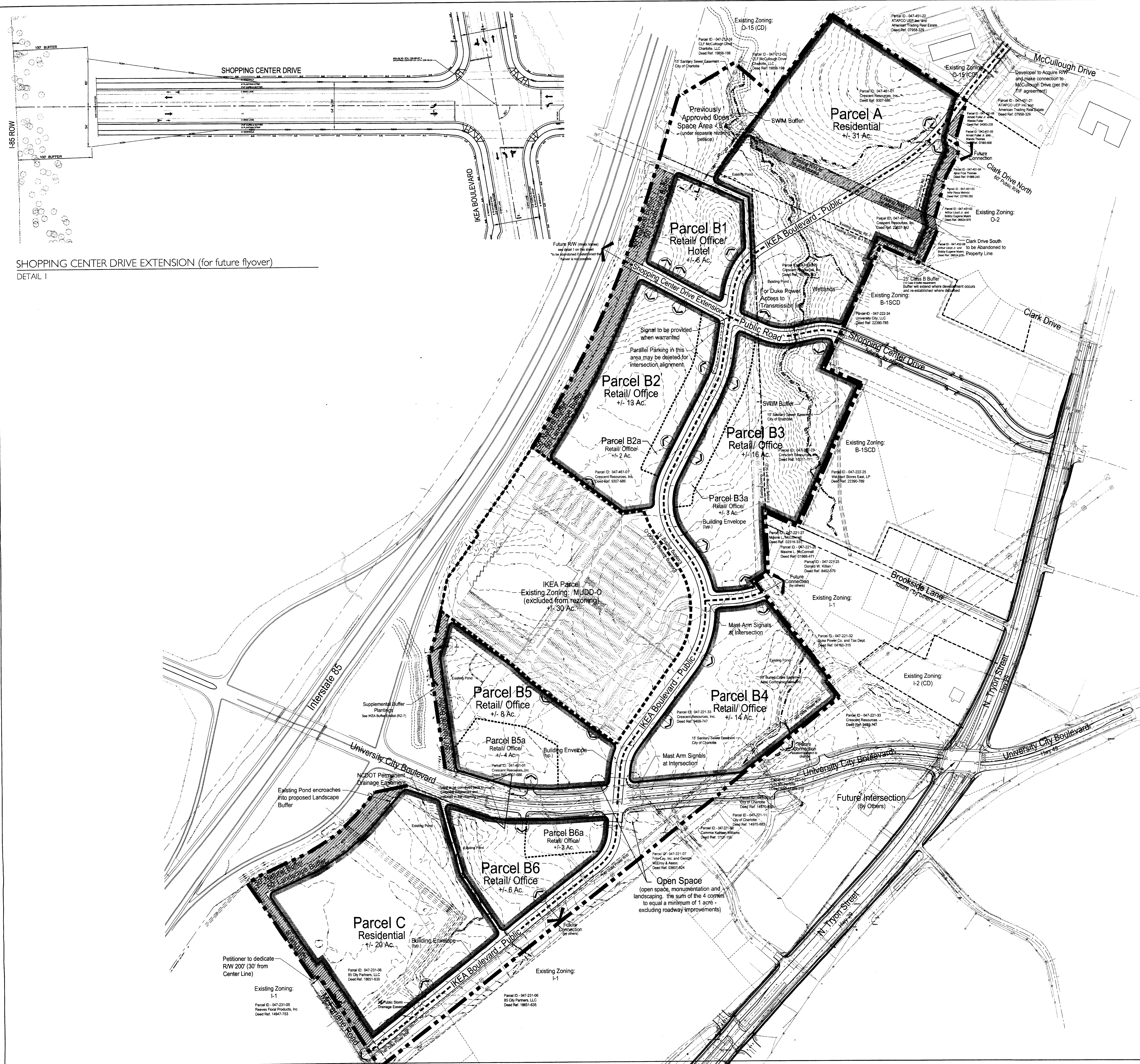
REVISIONS:
03/26/08 Revises per Staff Comments
04/23/08 Revises per Staff Comments
05/05/08 Revises per Staff Comments
05/16/08 Revises per Staff Comments

Belgate - Rezoning Petition
Charlotte, North Carolina
Crescent Resources, LLC
COVER



LandDesign
223 N Graham Street, Charlotte, NC 28202
V: 704.333.0325 F: 704.333.3746
www.LandDesign.com

650-8000



Site Data

