



CHARLOTTESM

Extraterritorial Jurisdiction (ETJ) Policing

January 22, 2018

- Extraterritorial Jurisdiction (ETJ) Overview
- Law enforcement agreements
between City of Charlotte and Mecklenburg County
- Agreement update

- ETJs are areas outside city limits that is likely to become part of the city or town limits.
 - Subject to Planning & Development regulations
 - Property owners taxed for police and rural fire protection
 - Residents do not vote in City Council elections



Current ETJ Policing Services

- Charlotte-Mecklenburg Police Department (CMPD) jurisdiction:
 - City of Charlotte and ETJ
 - Cornelius ETJ
 - Huntersville ETJ
 - Mint Hill ETJ
 - Pineville Sphere of Influence
- Services include standard patrol responses and specialty units, such as canine and crime scene support, when needed
- The six surrounding Towns provide police services within their respective town limits



Funding Police Services in the ETJs

- Law Enforcement Service District (LESD) created in 1996 to fund law enforcement services in the ETJs
- Levied on ETJ residents
 - FY 2018 rate: 21.46 cents per \$100 assessed value



Current LESD Budget Formula

Step 1

Determine ETJs share of CMPD's total jurisdiction

CMPD Service District, FY 2018	
City of Charlotte Population	808,585
Cumulative ETJ Population	60,911
CMPD Total Service District	869,496
ETJ Share of Service District Population	7%

Step 2

Multiply CMPD's overall budget by the ETJ share of population

County's Estimated FY 2018 LESD Cost	
CMPD Budget	\$257 million
ETJ Share of Service District Population	7%
County Share of LESD Cost	\$18 million

Recent Actions

- In April 2017, Mecklenburg County Board of Commissioners gave the required 14-month notice to terminate the Consolidated Agreement
- As of July 1, 2018, CMPD will no longer be the law enforcement authority within the ETJs
- However, the City and County have continued discussions and are working through a new agreement



Proposed Contract Modifications

- Clean up language no longer pertinent
- Eliminate the Huntersville ETJ, Cornelius ETJ, and Pineville sphere of influence from CMPD's police service
 - CMPD will continue to provide service in the Charlotte ETJ, the Town of Mint Hill ETJ, and at the McGuire Nuclear Power Plant
- Increased emphasis on CMPD data reporting to the Board of County Commissioners



Proposed Contract Modifications

- Reduction in County payment to the City
 - From \$18.0 million in FY 2018 to \$14.0 million in FY 2019
 - Annual increase commensurate with property value growth in the remaining ETJs
 - Property tax rate in ETJs should be maintained at 21.46 cents (set by the County)
- 5 year initial term, with 23 month required notice for termination by either party

Next Steps

- Staff is continuing to work with Mecklenburg County to finalize to contract modifications
- Council will see a potential agreement for approval at an upcoming Council meeting

Resource Slides

Extraterritorial Jurisdictions

- CMPD's estimated total service area: 869,496

FY 2018 Population Estimates			
Municipality	City Limits	ETJ	Total
Charlotte	808,585	47,477	856,062
Cornelius	28,943	277	29,220
Davidson*	12,633	773	13,406
Huntersville	56,223	2,373	58,596
Matthews	28,756	-	28,756
Mint Hill*	25,182	5,919	31,101
Pineville	8,580	4,092**	12,672
Stallings*	401	-	401
Total	969,303	60,911	1,030,214

*Include Mecklenburg County portion only

**Former Pineville Sphere (1984-2014)

Timeline of Agreements

Agreement
between city and
county provides
certain officers
county-wide
jurisdiction

1975

Amends
original Consolidation
Agreement to
include funding
mechanism for CMPD
services within ETJs

1996

1969

House Bill 1366
granted
countywide
jurisdiction to
Charlotte Police
Department

1993

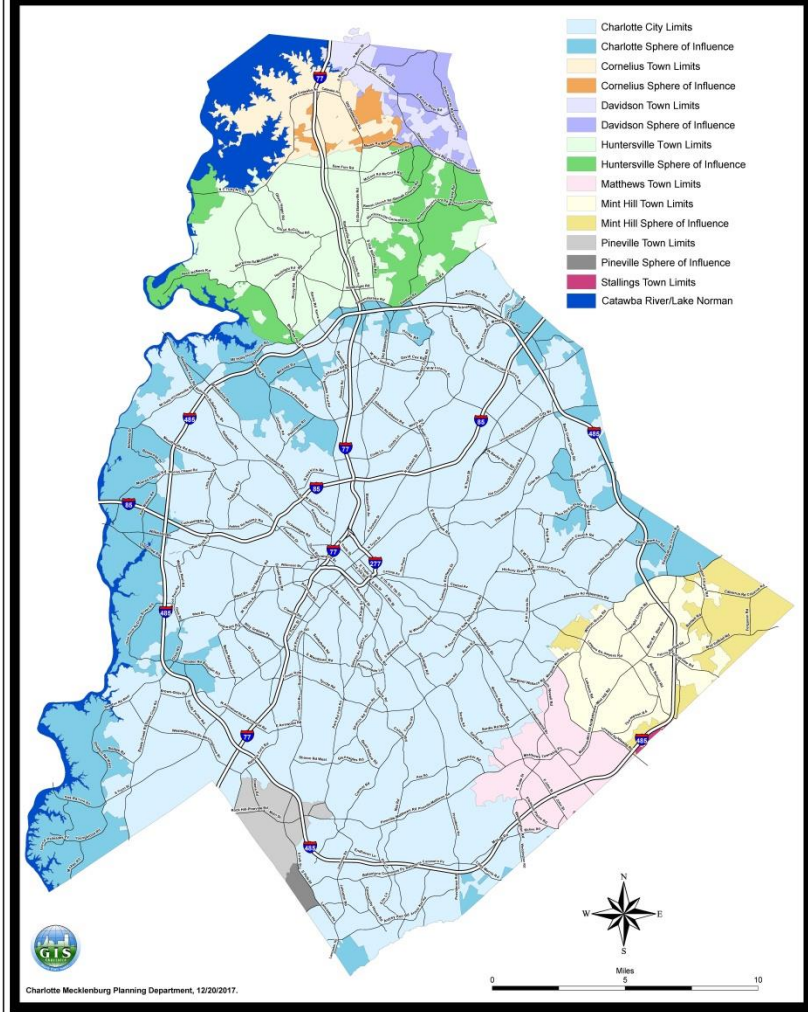
Consolidation
Agreement
creates CMPD
and establishes
CMPD jurisdiction
within ETJs

2017

Board of
Commissioners
votes unanimously
to terminate the
1996 Consolidation
Agreement, ending
CMPD jurisdiction
within ETJs

History

Mecklenburg County Spheres of Influence



- In 1984, Spheres of Influence agreements were established between Charlotte and the six Mecklenburg Towns that set future annexation boundaries
- Five of the six towns renewed the annexation agreements in 2014
- Pineville renewal is now under discussion
- The agreements allowed for orderly annexation as growth occurred County-wide