



CHARLOTTESM

**ENGINEERING & PROPERTY
MANAGEMENT**

Charlotte's Urban Forest Master Plan

The Playbook for Managing our Tree Canopy

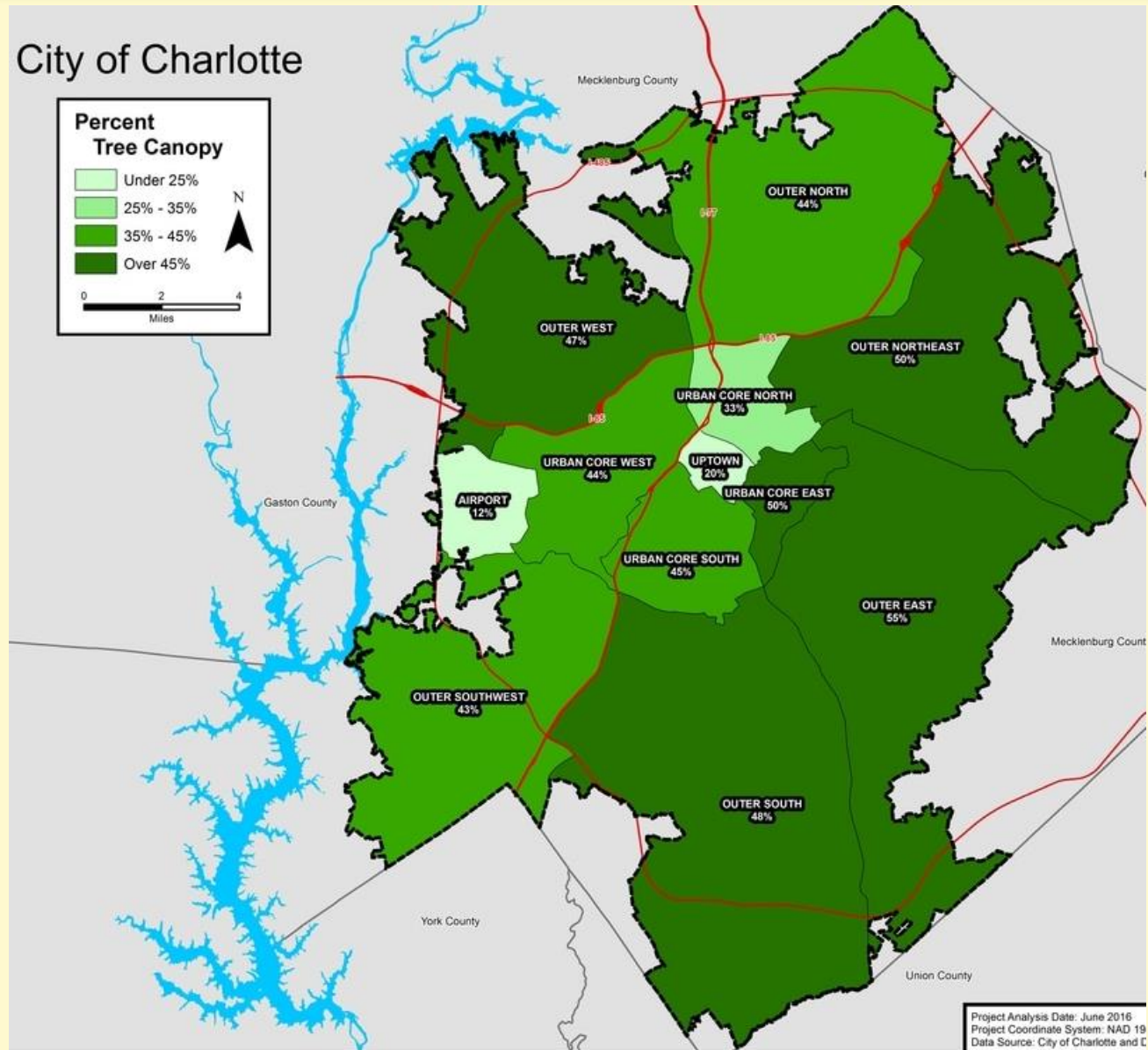
City Council Dinner Briefing
September 11, 2017

Outline

- Council Goal: 50% Canopy by 2050
- Master Plan Overview
- TreesCharlotte Update
- Next Steps
 - Council will be asked to approve the plan at Council's September 25th business meeting

2011 Council Goal: A Rallying Cry

50% tree canopy coverage by the year 2050





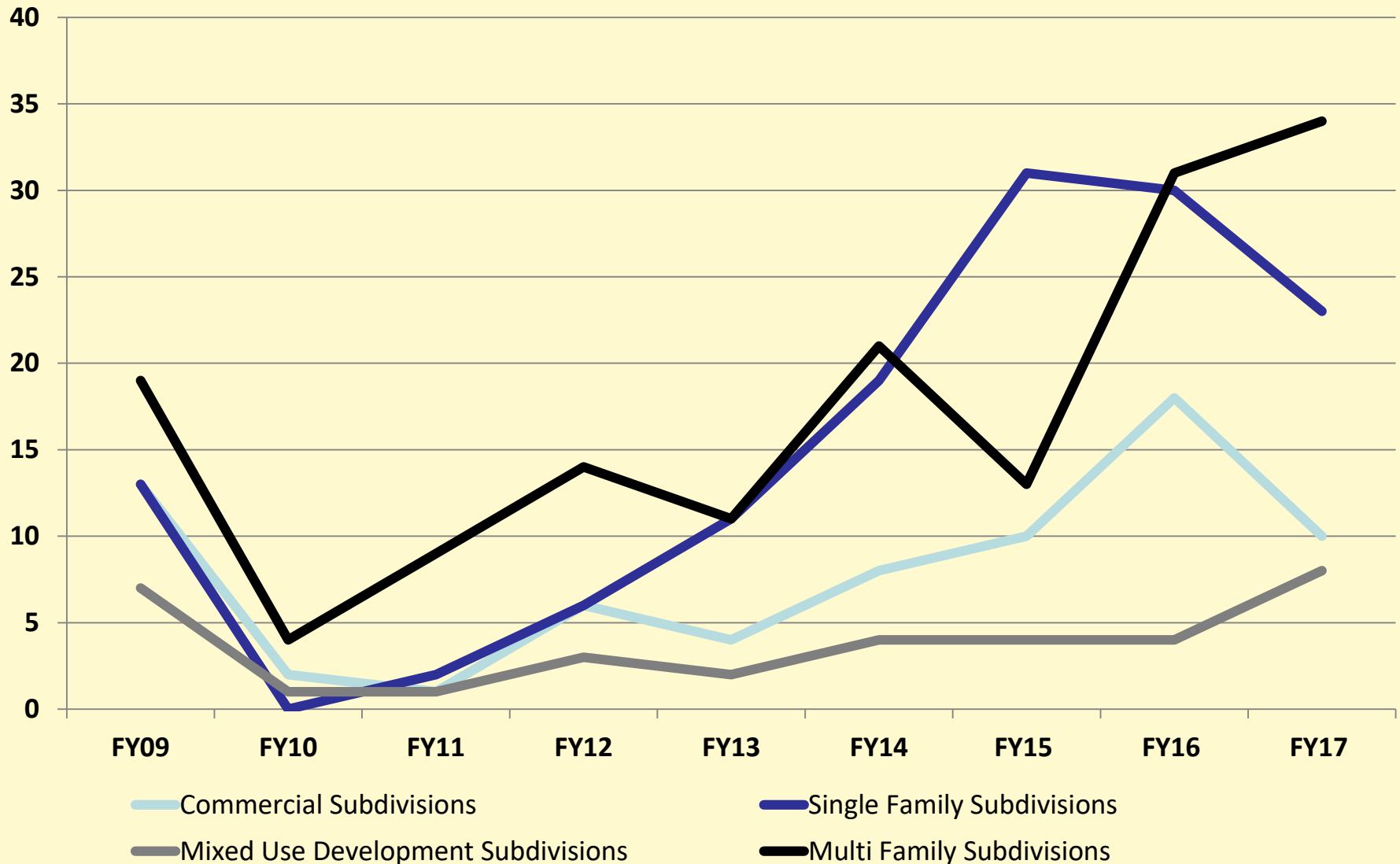
Since 2011: Accomplishments

- Strong cross-sector partnership: TreesCharlotte
 - **105 events with 11,717 community volunteers**
- Tree planting on public (City, County, CMS, CHA) and private property
- Tree Canopy Preservation Program -190 acres preserved
- Annual “Tree Summits”
- More sophisticated techniques for determining tree health
- More cost-effective and useful approach to canopy coverage assessment
- Cankerworm education and tree-banding matching grants



Since 2011: Development Trends

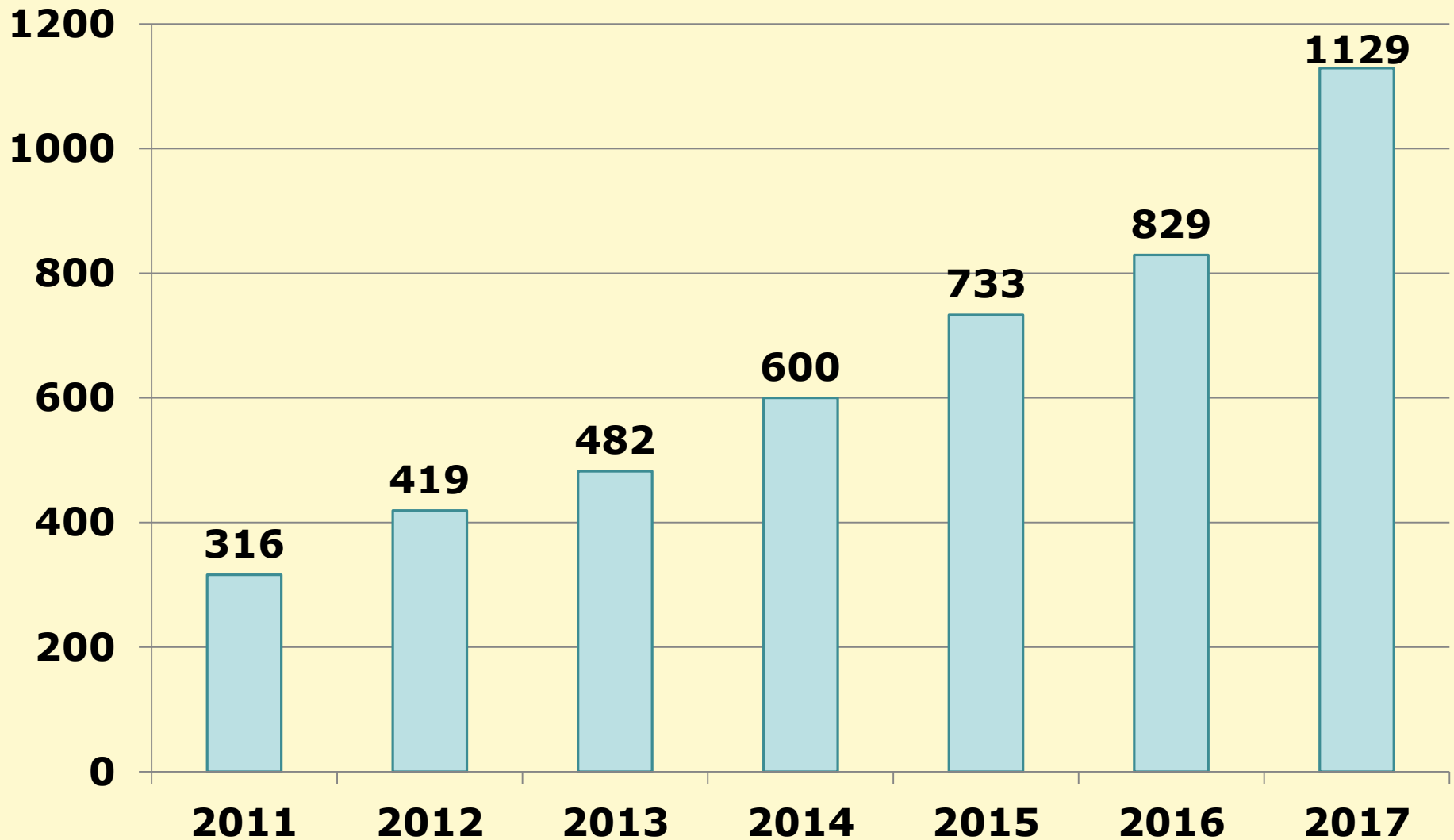
Projects Submitted Annually





Since 2011: Aging Canopy Trends

City Trees Removed Annually



CHARLOTTE

URBAN FOREST MASTER PLAN

2017



Playbook for the engagement and action of community leaders, governments, residents, and organizations in growing and sustaining our urban forest.

<http://charlottenc.gov/treeplan>

The Community Was Engaged

- Four stakeholder meetings across Charlotte
- Survey with 2,800 responses
 - 90% said trees are important to City
 - 97% want greater protection of large trees
 - 75% support stronger regulation of trees
 - 86% support greater funding for trees
- 3 Community Meetings

Master Plan Findings



- Charlotte has high quality canopy and programs
- Areas of concern and opportunity
 - Aging trees
 - Street tree care
 - Large trees on private property
 - Outreach to citizens
- **Charlotte is not on yet a path to achieve its aspirational 50% canopy goal**
- Recommendations and timeline to move toward 50x50

Environment Committee

- Environment Committee received presentations on the Master Plan on March 14 and December 5, 2016, and April 3, 2017.
- On June 5, 2017, the Environment Committee voted (Kinsey, Ajmera, Fallon, Austin in favor; Mitchell was not present) to recommend the adoption of the Master Plan.

| Public Property Canopy Opportunities | | | Private Property Canopy Opportunities | |
|---|-------------|------------|---------------------------------------|------------|
| City Land & ROW | County Land | CMS Land | Residential | Commercial |
| ≈10% canopy | ≈10% canopy | ≈5% canopy | ≈75% canopy | |
| Tree Canopy Identity & Awareness Campaign Memorial Tree Program Trees & Tree Education in Schools | | | | |

Public Property Canopy Opportunities

City Land & ROW

County Land

CMS Land

≈10% canopy

≈5% canopy

- Parks & Nature Preserves
- County Facilities

- Schools and Support/Administrative Facilities

TREESCHARLOTTE PARTNERSHIPS

TreesCharlotte and the City continue to partner with County and CMS to plant on public lands.

- Expanded Arboreta Trail
- Expanded Public Tree Inventory



Private Property Canopy Opportunities

Residential

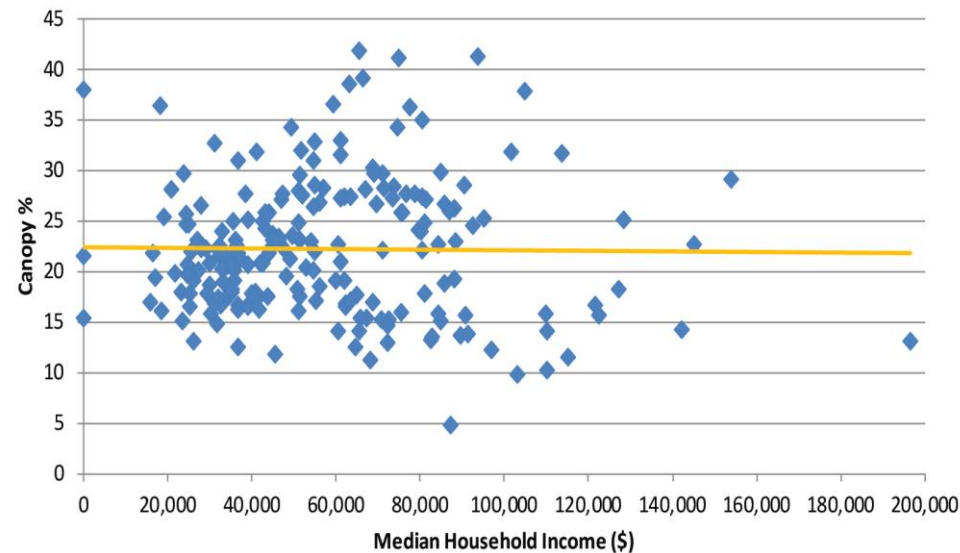
Commercial

≈75% canopy

- Private yards and neighborhood common areas

Relationship Between
Canopy & Household Income

◆ Census Tract Data Point — Canopy Trend Line



Private Property Canopy Opportunities

Residential

Commercial

≈75% canopy

| | |
|--|--|
| <ul style="list-style-type: none">• Private yards and neighborhood common areas | <ul style="list-style-type: none">• Commercial sites and new planned neighborhoods |
| <ul style="list-style-type: none">• Neighborhood-level “Mini” Urban Forest Master Plans• Community Arborist Program: Educate residents and provide professional assistance for tree care/aging canopy• Creative re-use of lumber | <ul style="list-style-type: none">• “Green Developer” Designation• Consider role of trees in urban settings• Consider requirements for preserving and planting trees |

- Assess tree canopy coverage every 3 – 5 years
 - Canopy Teams

TREESCHARLOTTE PARTNERSHIPS

TreesCharlotte and the City will continue to partner to hold neighborhood planting events, “tree stores”, and more

Canopy Team



Progress can only be achieved with a larger community team.

1. Neighborhood Engagement
2. Development Study
3. Creative Funding
4. Corporate Engagement

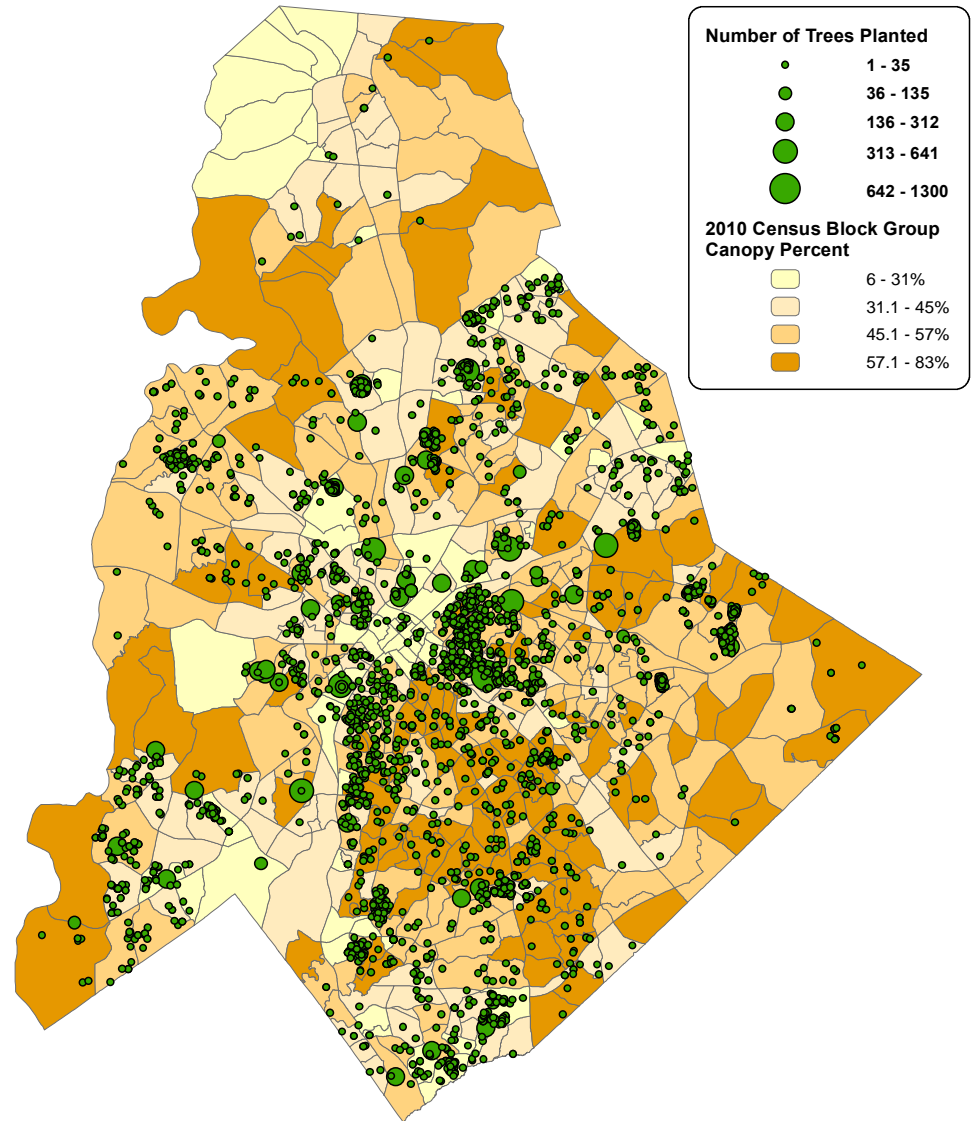


TreesCharlotte is a non-profit partner with the City to grow and diversify Charlotte's urban forest by planting 500,000 trees by 2050, promoting tree stewardship and educating how to plant and preserve trees.



Planting Locations

The larger dot locations have a higher concentration of planted trees.



Tree planting data collected by TreesCharlotte spring 2012 - spring 2017. Canopy percent determined from LiDAR data by Mecklenburg County. Map created in June 2017 by Reed Perkins, Queens University of Charlotte (perkinsr@queens.edu).

Successful Urban Forestry in Charlotte

TreesCharlotte is uniquely positioned to expand the partnership with the City in the following critical areas to implement the Plan:

1. Tree planting

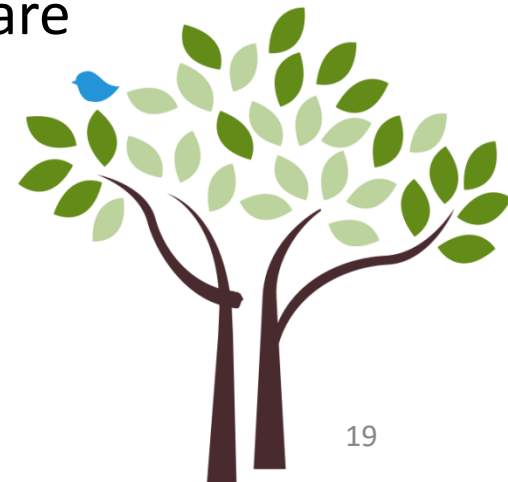
- Requires hosting multiple community planting events simultaneously during planting season

2. Community engagement

- Tree care education and clinics on tree care

3. Stewardship programs

- Expand stewardship volunteer programs
- Volunteer tree care of young street trees



Next Steps



- City Council will be asked to adopt master plan on September 25
- Staff and canopy team continue to work on master plan recommendations & programmatic opportunities
 - 5-year resource needs will be included