

**RESOLUTION FIXING DATE OF PUBLIC HEARING
ON QUESTION OF ANNEXATION PURSUANT TO G.S. 160A-31**

ROCKY RIVER MPV AREA

WHEREAS, a petition requesting annexation of the area described herein has been received; and

WHEREAS, the City Council has by resolution directed the City Clerk to investigate the sufficiency of the petition; and

WHEREAS, certification by the City Clerk as to the sufficiency of the petition has been made;

NOW, THEREFORE, BE IT RESOLVED by the City Council of the City of Charlotte, North Carolina that:

Section 1. A public hearing on the question of annexation of the area described herein will be held in the Meeting Chamber of the Charlotte-Mecklenburg Government Center, 600 E. Fourth Street, Charlotte, N.C. at 7:00 p.m. on October 9, 2017.

Section 2. The area proposed for annexation is described as follows:

LEGAL DESCRIPTION

BEING THAT PROPERTY LYING AND BEING IN CRAB ORCHARD TOWNSHIP, MECKLENBURG COUNTY, NORTH CAROLINA, DESCRIBED IN BOOK 24792-354, AND 30348-426 MECKLENBURG COUNTY PUBLIC REGISTRY; DESCRIBED AS FOLLOWS:

COMMENCING AT "GPS STATION #1348", SAID POINT HAVING NORTH CAROLINA STATE PLANE GRID COORDINATES OF NORTHING: 560,977.096 FEET AND EASTING: 1,501,819.102 FEET (NAD 83; NAVD 88:723.578); THENCE N 08-02-30 E 3370.86 FEET TO AT "GPS STATION #1082", SAID POINT HAVING NORTH CAROLINA STATE PLANE GRID COORDINATES OF NORTHING: 564,314.281 FEET AND EASTING: 1,502,290.594 FEET (NAD 83; NAVD 88:710.723), THENCE S 64-22-55 E TO AN IRON, THENCE WITH THE LINE OF THE PROPERTY OF EUGENE W. COCHRANE, JR. (NOW OR FORMERLY) AS SHOWN IN BOOK 1948, PAGE 133, CABARRUS COUNTY PUBLIC REGISTRY, THE FOLLOWING FIVE (5) CALLS AND DISTANCES: (1) S 54-09-52 W 280.61 FEET TO A PIPE FOUND; S 00-56-33 E 437.85 FEET TO A PIPE FOUND; (3) S 12-41-55 E 591.72 FEET TO A PIPE FOUND; (4) N 79-37-04 E 313.98 FEET TO A 1" PIPE FOUND; (5) S 14-14-31 E 259.36 FEET TO A #4 REBAR FOUND; THENCE LEAVING SAID PROPERTY LINE OF EUGENE W. COCHRANE, JR. (NOW OR FORMERLY) AND WITH THE NORTHERN RIGHT-OF-WAY LIMIT OF ROCKY RIVER ROAD (S.R. #1139) THE FOLLOWING TWO (2) CALLS AND DISTANCES: (1) N 87-34-17 W 864.65 FEET TO A POINT; (2) N 87-20-17 W 99.88 FEET TO A #5 REBAR FOUND; THENCE WITH THE EASTERN RIGHT-OF-WAY LIMIT OF I-485 THE FOLLOWING THREE (3) CALLS AND DISTANCES: (1) N 46-01-59 W 165.47 FEET TO A R/W DISK FOUND; (2) ALONG THE ARC OF A CIRCULAR CURVE TO THE LEFT WITH A RADIUS OF 180.00 FEET, ARC LENGTH OF 138.76 FEET, CHORD BEARING OF N 65-14-12 W, AND A CHORD DISTANCE OF 135.35 FEET TO A R/W DISK FOUND; THENCE (3) N 87-16-34 W 5.82 FEET TO POINT ON THE MECKLENBURG/CABARRUS COUNTY LINE, **THE POINT OF BEGINNING**;

THENCE WITH THE MECKLENBURG/CABARRUS COUNTY LINE S 14-33-06 E

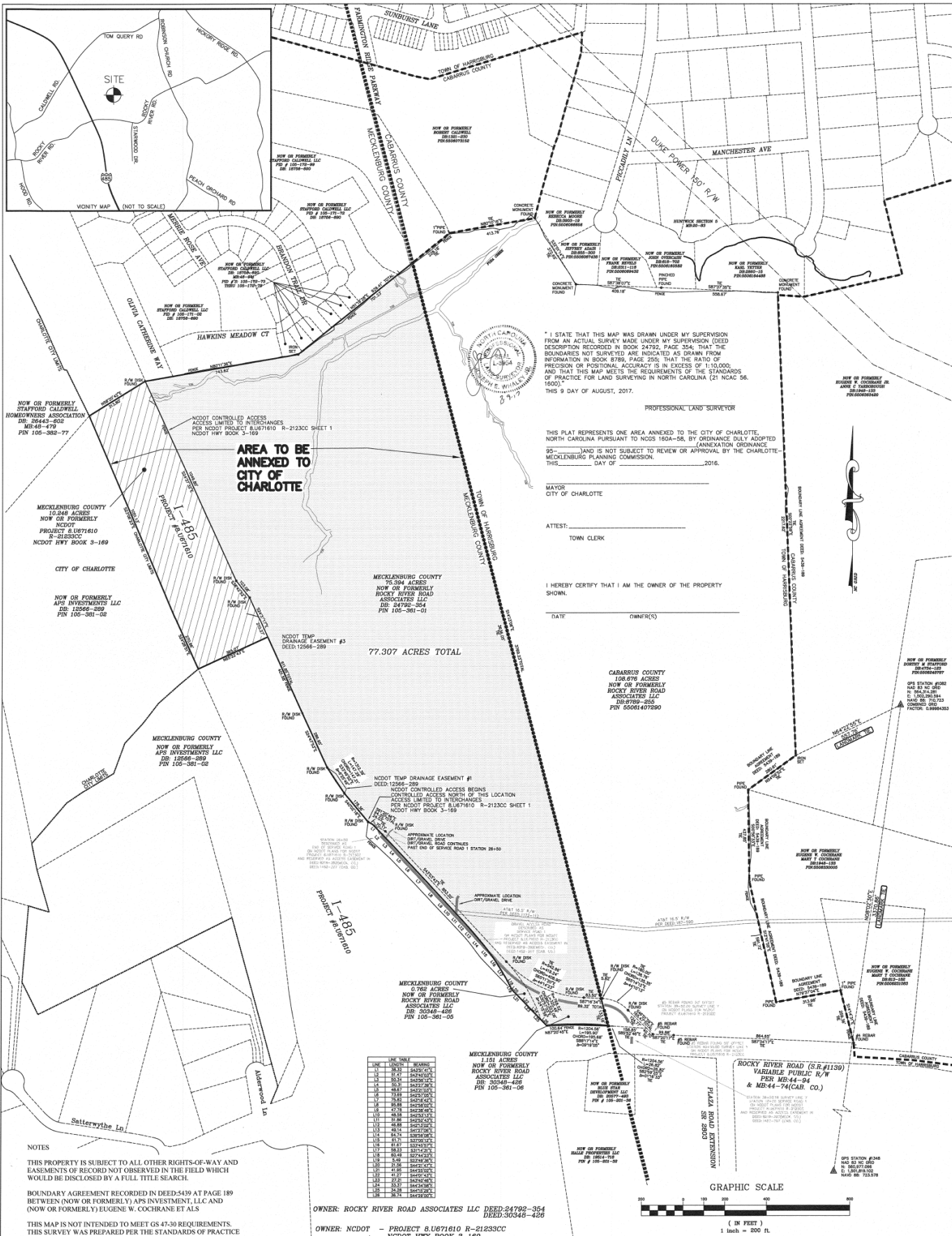
133.18' TO A POINT ON THE NORTHERN RIGHT-OF-WAY OF ROCKY RIVER ROAD; THENCE WITH THE NORTHERN RIGHT-OF-WAY OF ROCKY RIVER ROAD TWO (2) CALLS 1) WITH THE ARC OF A CURVE TO THE LEFT HAVING A RADIUS OF 1204.56' AN ARC LENGTH OF 195.90'(SUBTENDED BY CHORD N88-17-14W 195.68') TO A POINT; 2) S87-20-45W 100.64' TO A POINT, THE INTERSECTION OF THE NORTHERLY RIGHT-OF-WAY OF ROCKY RIVER ROAD AND THE EASTERLY RIGHT-OF-WAY OF I-485; THENCE THIRTY THREE (33) CALLS WITH THE EASERLY RIGHT-OF-WAY OF I-485;

1)N44-29-00W 36.74' TO A POINT; 2)N44-15-29W 34.28' TO A POINT;

3) N44-34-58W 33.37' TO A POINT; 4)N43-40-46W 27.21' TO A POINT;
5)N44-01-43W 41.27' TO A POINT; 6)N44-25-02W 41.95' TO A POINT;
7)N44-21-47W 21.56' TO A POINT; 8) N23-49-36W 5.49' TO A POINT;
9) N27-44-23W 60.49' TO A POINT; 10) N31-14-31W 58.23' TO A POINT;
11) N33-45-57W 61.67' TO A POINT; 12) N37-05-12W 61.71' TO A POINT;
13) N39-59-08W 64.74' TO A POINT; 14) N41-27-06W 49.14' TO A POINT;
15) N42-13-02W 46.88' TO A POINT; 16) N42-52-43W 51.86' TO A POINT;
17) N42-53-13W 48.58' TO A POINT; 18) N42-38-49W 47.78' TO A POINT;
19) N42-58-02W 95.88' TO A POINT; 20) N43-18-42W 75.82' TO A POINT;
21) N42-57-05W 73.69' TO A POINT; 22) N43-21-03W 48.67' TO A POINT;
23) N43-27-39W 50.31' TO A POINT; 24) N43-56-12W 50.34' TO A POINT;
25) N43-40-03W 51.47' TO A POINT; 26) N43-51-41W 38.32' TO A POINT;
27) N61-20-46W 24.03' TO A R/W DISK FOUND; (28) N 40-02-18 W 178.36 FEET TO A R/W DISK FOUND; (29) ALONG THE ARC OF A CIRCULAR CURVE TO THE RIGHT WITH A RADIUS OF 1312.39 FEET, AN ARC LENGTH OF 147.29 FEET, (SUBTENDED BY CHORD N 33-49-52 W 147.21 FEET) TO A R/W DISK FOUND; (30) N 24-47-53 W 286.95 FEET TO A R/W DISK FOUND;
(31) N 24-37-17 W 401.58 FEET TO A POINT; (32) S 65-22-43 W 365.07 FEET TO A POINT; (33) N 24-28-51 W 270.86 FEET TO A POINT (35) N 23-06-23 W 1051.13 FEET TO A POINT; (36) N 58-20-42 E 313.80 FEET TO A R/W DISK FOUND IN THE SOUTHERN TERMINUS OF OLIVIA CATHERINE WAY; THENCE WITH THE SOUTHERN TERMINUS OF OLIVIA CATHERINE WAY AND THE RIGHT-OF-WAY LINE OF HAWKINS MEADOWS CT AND THE SOUTHERN BOUNDARY LINE OF THE PROPERTY OF STAFFORD CALDWELL, LLC (NOW OR FORMERLY) AS SHOWN IN BOOK 18756, PAGE 690, MECKLENBURG COUNTY PUBLIC REGISTRY, THE FOLLOWING TWO (2) CALLS AND DISTANCES: (1) N 80-11-36 E 743.62 FEET TO AN IRON SET;
(2) N 51-18-28 E 701.23 FEET TO A POINT ON THE MECKLENBURG/CABARRUS COUNTY LINE; THENCE WITH THE MECKLEBURG/CABARRUS COUNTY LINE S 14-33-06E 3636.05' TO A POINT, **THE POINT OF BEGINNING**

SAID PROPERTY CONTAINING 87.555 ACRES AS SHOWN ON THAT ANNEXATION EXHIBIT BY YARBROUGH-WILIAMS & HOULE, INC. DATED JANUARY 16, 2017, SIGNED AND SEALED BY JOSEPH E. WHALEY, JR. NCPLS.

Section 3. Notice of the public hearing shall be published in the *Mecklenburg Times*, a newspaper having general circulation in the City of Charlotte, at least ten (10) days prior to the date of the public hearing.



NOTES

THIS PROPERTY IS SUBJECT TO ALL OTHER RIGHTS-OF-WAY AND EASEMENTS OF RECORD NOT OBSERVED IN THE FIELD WHICH WOULD BE DISCLOSED BY A FULL TITLE SEARCH.

BOUNDARY AGREEMENT RECORDED IN DEEDS 5439 AT PAGE 189 BETWEEN (NOW OR FORMERLY) APS INVESTMENT, LLC AND (NOW OR FORMERLY) EUGENE W. COCHRANE ET AL.

THIS MAP IS NOT INTENDED TO MEET GS 47-30 REQUIREMENTS. THIS SURVEY WAS PREPARED PER THE STANDARDS OF PRACTICE FOR LAND SURVEYORS IN NORTH CAROLINA WITH AN ERROR OF CLOSURE IN EXCESS OF 1:10,000.

MECKLENBURG COUNTY
THIS PROPERTY DOES NOT LIE WITHIN A FEMA FLOODWAY PER FIRM MAP #5710C0151E WITH AN EFFECTIVE DATE OF FEBRUARY 4, 2004.

CABARRUS COUNTY
A PORTION OF THIS PROPERTY LIES WITHIN A FLOODWAY PER FIRM MAP #5710S06000 WITH A PRELIMINARY DATE OF MAY 25, 2007. (CROSS SECTIONS AND ELEVATIONS SHOWN HEREON ARE FOR REFERENCE PURPOSES ONLY AND ARE NOT EFFECTIVE ELEVATIONS UNTIL THE MAP HAS BEEN ADOPTED BY CABARRUS COUNTY.)

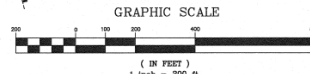
PORTIONS OF THIS PROPERTY MAY BE SUBJECT TO ARMY CORP. OF ENGINEERS WETLAND REGULATIONS. WETLANDS SHOWN HEREON WERE IDENTIFIED BY OTHERS.

MECKLENBURG COUNTY & CABARRUS COUNTY LINE AS

LINE	LENGTH	BEARING
1	61.47	S42°52'02"E
2	61.47	S42°52'02"E
3	61.47	S42°52'02"E
4	61.47	S42°52'02"E
5	61.47	S42°52'02"E
6	61.47	S42°52'02"E
7	61.47	S42°52'02"E
8	61.47	S42°52'02"E
9	61.47	S42°52'02"E
10	61.47	S42°52'02"E
11	61.47	S42°52'02"E
12	61.47	S42°52'02"E
13	61.47	S42°52'02"E
14	61.47	S42°52'02"E
15	61.47	S42°52'02"E
16	61.47	S42°52'02"E
17	61.47	S42°52'02"E
18	61.47	S42°52'02"E
19	61.47	S42°52'02"E
20	61.47	S42°52'02"E
21	61.47	S42°52'02"E
22	61.47	S42°52'02"E
23	61.47	S42°52'02"E
24	61.47	S42°52'02"E
25	61.47	S42°52'02"E
26	61.47	S42°52'02"E
27	61.47	S42°52'02"E
28	61.47	S42°52'02"E
29	61.47	S42°52'02"E
30	61.47	S42°52'02"E
31	61.47	S42°52'02"E
32	61.47	S42°52'02"E
33	61.47	S42°52'02"E
34	61.47	S42°52'02"E
35	61.47	S42°52'02"E
36	61.47	S42°52'02"E
37	61.47	S42°52'02"E
38	61.47	S42°52'02"E
39	61.47	S42°52'02"E
40	61.47	S42°52'02"E
41	61.47	S42°52'02"E
42	61.47	S42°52'02"E
43	61.47	S42°52'02"E
44	61.47	S42°52'02"E
45	61.47	S42°52'02"E
46	61.47	S42°52'02"E
47	61.47	S42°52'02"E
48	61.47	S42°52'02"E
49	61.47	S42°52'02"E
50	61.47	S42°52'02"E
51	61.47	S42°52'02"E
52	61.47	S42°52'02"E
53	61.47	S42°52'02"E
54	61.47	S42°52'02"E
55	61.47	S42°52'02"E
56	61.47	S42°52'02"E
57	61.47	S42°52'02"E
58	61.47	S42°52'02"E
59	61.47	S42°52'02"E
60	61.47	S42°52'02"E
61	61.47	S42°52'02"E
62	61.47	S42°52'02"E
63	61.47	S42°52'02"E
64	61.47	S42°52'02"E
65	61.47	S42°52'02"E
66	61.47	S42°52'02"E
67	61.47	S42°52'02"E
68	61.47	S42°52'02"E
69	61.47	S42°52'02"E
70	61.47	S42°52'02"E
71	61.47	S42°52'02"E
72	61.47	S42°52'02"E
73	61.47	S42°52'02"E
74	61.47	S42°52'02"E
75	61.47	S42°52'02"E
76	61.47	S42°52'02"E
77	61.47	S42°52'02"E
78	61.47	S42°52'02"E
79	61.47	S42°52'02"E
80	61.47	S42°52'02"E
81	61.47	S42°52'02"E
82	61.47	S42°52'02"E
83	61.47	S42°52'02"E
84	61.47	S42°52'02"E
85	61.47	S42°52'02"E
86	61.47	S42°52'02"E
87	61.47	S42°52'02"E
88	61.47	S42°52'02"E
89	61.47	S42°52'02"E
90	61.47	S42°52'02"E
91	61.47	S42°52'02"E
92	61.47	S42°52'02"E
93	61.47	S42°52'02"E
94	61.47	S42°52'02"E
95	61.47	S42°52'02"E
96	61.47	S42°52'02"E
97	61.47	S42°52'02"E
98	61.47	S42°52'02"E
99	61.47	S42°52'02"E
100	61.47	S42°52'02"E

OWNER: ROCKY RIVER ROAD ASSOCIATES LLC DEED-34798-354 DEED-30348-456

OWNER: NCDOT - PROJECT 8.0671610 R-21233CC NCDOT HWY BOOK 3-169



NSL	DATE	REVISION	BY
SHEET TITLE			PROJECT NO.
ANNEXATION PLAT OF MECKLENBURG COUNTY PROPERTY ONLY - 87.555 ACRES TOTAL			SCALE 1"=200'
PROJECT PROPERTY ON ROCKY RIVER RD. & I-485 CRAB ORCHARD TWP., MECK CO. & No.1 TWP., CABARRUS CO. OWNER AS SHOWN ABOVE			DATE 01/16/2017
DRAWN BY J.E.W.			CHECKED BY J.E.W.
DRAWING NO.			