



CHARLOTTE WATER



1

FY 2025 Budget Presentation



#onewaterstrong

April 1, 2024



Operated by the
City of Charlotte

2

What We Do



Protect Surface Waters
(Water Quality)



Ensure Adequate Public Drainage Infrastructure
(Water Quantity)

CHARLOTTE WATER



5

5

FY2023 Quick Stats

Accomplishments of our 200+ team members include:



800+
projects
managed



245+
projects
completed



42,000+
feet of pipe
installed or
rehabilitated



25,000+
feet of stream
improvement
in progress



6,000+
private
development
plan reviews
completed



3,600+
drainage & surface
water pollution
concerns reported
through 311

CHARLOTTE WATER



6

6

Financial Efficiency



\$91M
invested in capital
improvement projects

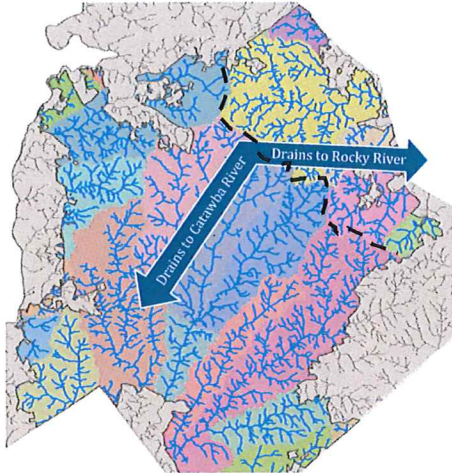


AAA
by Moody's Investors
Service and Standard &
Poor's Financial Services



73¢
per dollar collected
invested in capital
improvement projects

Stormwater “System Plan”



Charlotte's Watersheds and Major Streams

►Charlotte's Watersheds

- The “system plan” for Storm Water Services was created by nature.
- 18 watersheds collect rainwater, drain to a network of streams within those watersheds, then flow to the Catawba or Rocky River.
- As the City develops, natural drainage channels and small creeks are replaced with piped in drainage.
- Drainage network now includes ~2,100 miles of privately owned pipe and ~1,400 miles of publicly owned pipes.

CHARLOTTE WATER



7

7

Improving Surface Water Quality

Protect & improve the City's surface waters as required by law



- | | |
|--|---|
| <ul style="list-style-type: none"> <input checked="" type="checkbox"/> Ensure MS4 Permit Compliance for City under Federal Clean Water Act. <input checked="" type="checkbox"/> Construct surface water quality projects. <input checked="" type="checkbox"/> Administer Stream and Wetland Mitigation Banks. | <ul style="list-style-type: none"> <input checked="" type="checkbox"/> Enforcement and prevention of illicit discharges into streams. <input checked="" type="checkbox"/> Volunteer engagement and community education. |
|--|---|

CHARLOTTE WATER



8

8

Mitigating Flood Risks



- Minor Capital Storm Drainage projects address acute drainage repair needs.
- Major Capital Projects provide comprehensive, large-scale upgrades of storm drainage systems to add capacity or replace aging drainage infrastructure.
- FY2020-FY2024 Project "Surge": All projects completed or assigned by end of FY2024.

CHARLOTTE WATER



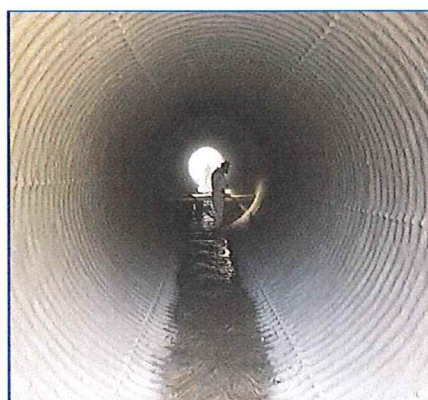
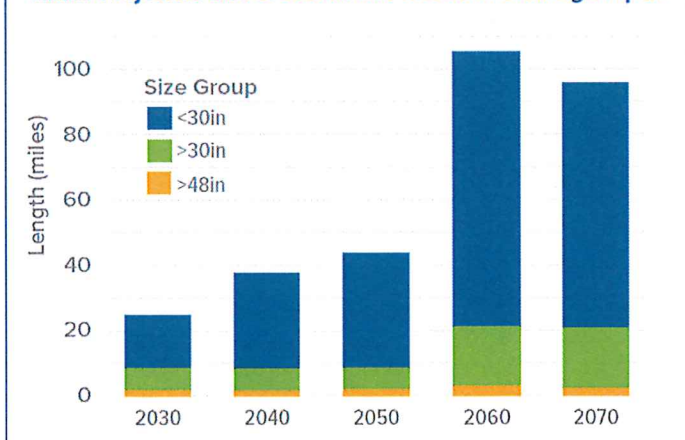
9

9

WM0

Taking Care of the Drainage System

Initial Projected End of Useful Life of Storm Drainage Pipes



Preventative maintenance activities as shown here help extend the life of the drainage system.

CHARLOTTE WATER



10

10

Increasing Storm Severity

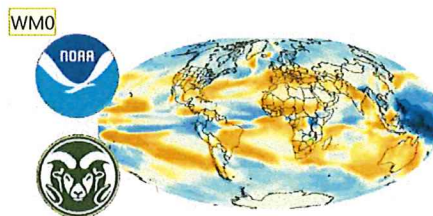
► More intense storms can increase flood risks and infrastructure costs

- While drainage designs consider extreme storms, extremes may happen more frequently or worsen.



► STW evaluating predicted intensity, duration and frequency (IDF) of future storm events

- Partnered with Colorado State University for review of local rainfall data.
- New model results expected from NOAA by 2026 on rainfall Intensity, Duration, and Frequency.



CHARLOTTE WATER



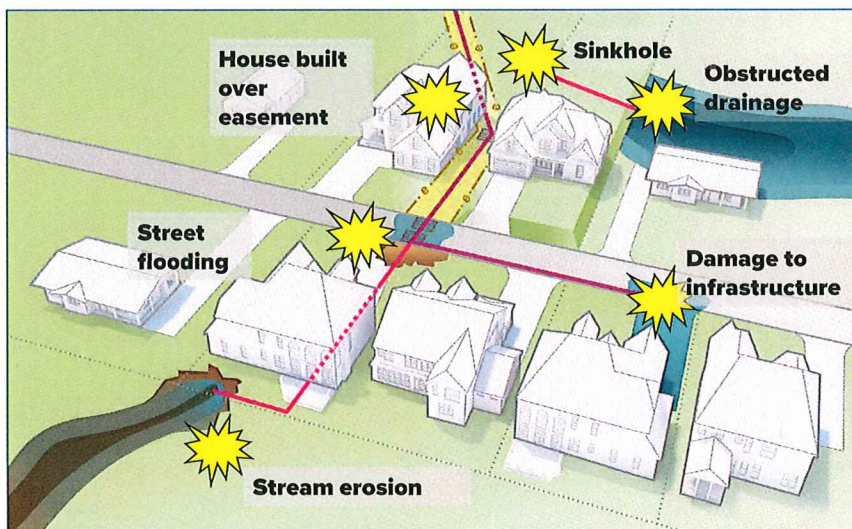
11

11

Development Regulation

Unified Development Ordinance (UDO)

- Now allows City to review all new developments for drainage impacts.
- Over 3,500 single lot development reviews since June 1.
- Adds to ~6,000 annual development reviews already occurring under pre-UDO regulations.



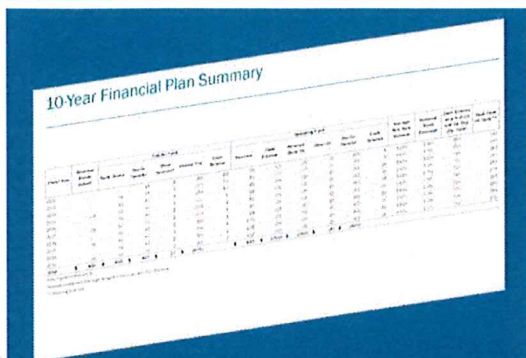
CHARLOTTE WATER



12

12

Planning for Financial Sustainability



Storm Water Services conducts financial modeling 10 years into the future to ensure viability.

- ✓ Support STW's strategic priorities.
- ✓ Meet all City finance requirements.
- ✓ Sustain AAA ratings (Moody's and S&P).
- ✓ Preserve debt capacity for future.
- ✓ Use sustained, moderate, annual fee increases to address inflation and system growth (projected 3.7%).

The increase corresponds to a \$0.53 increase or less for 90% of single-family rate payers.

CHARLOTTE WATER



13

13



Charlotte Water #onewaterstrong

Vision

To be a leading water utility, recognized for excellence and dedicated to our people, community, region and environment

CHARLOTTE WATER



14

14

Regional Partnerships

• Wastewater Agreements:

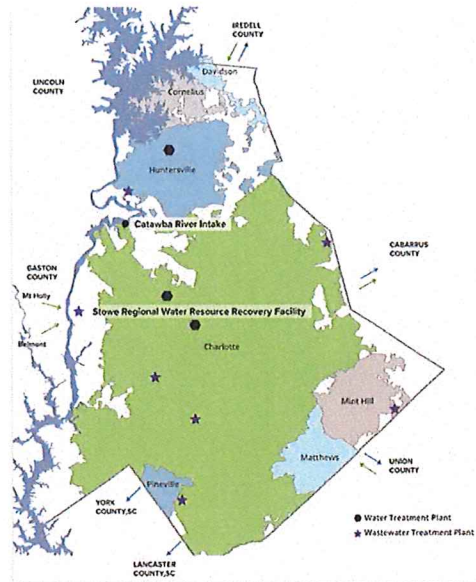
- Water and Sewer Authority of Cabarrus County
- Union County
- Lancaster County, South Carolina
- City of Mount Holly
- City of Belmont

• Potable Water Agreements:

- York County, South Carolina
- Lancaster County Water and Sewer District, South Carolina
- Town of Harrisburg
- City of Concord (As Needed)
- Union County (As Needed)

• Other Partnerships:

- Catawba Wateree Water Management Group
- Yadkin PeeDee Water Management Group
- Lake Marine Commissions
- Lower Catawba TMDL Group
- NC/SC Regulatory Agencies
- NGOs, Non-Profits, Others



Arrows indicate the direction of water (blue) and sewer (green) flows.

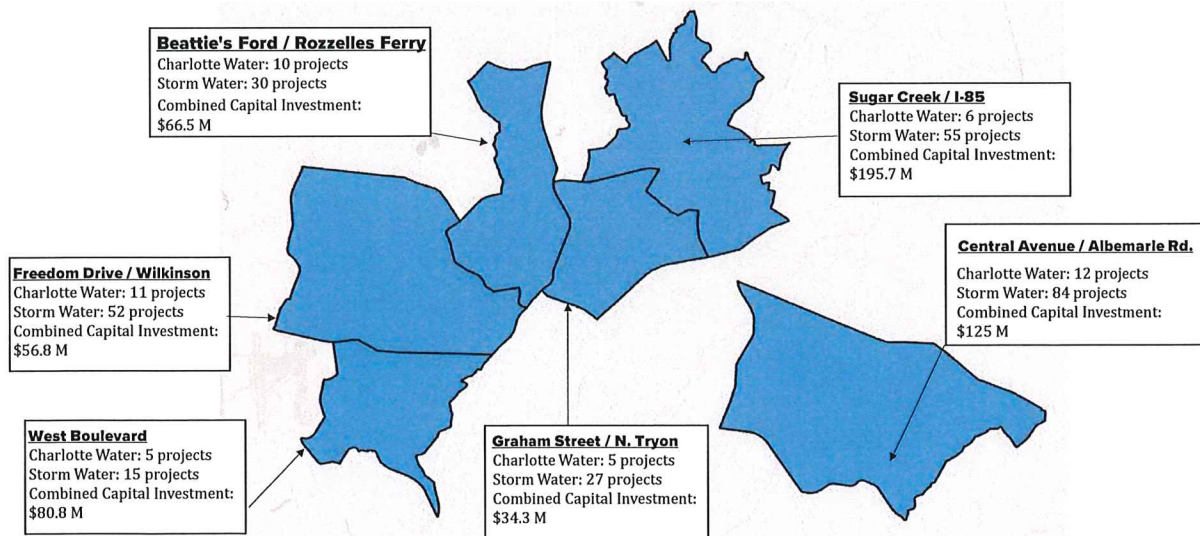
CHARLOTTE WATER



15

15

Over \$550M Invested in Corridors of Opportunity



CHARLOTTE WATER



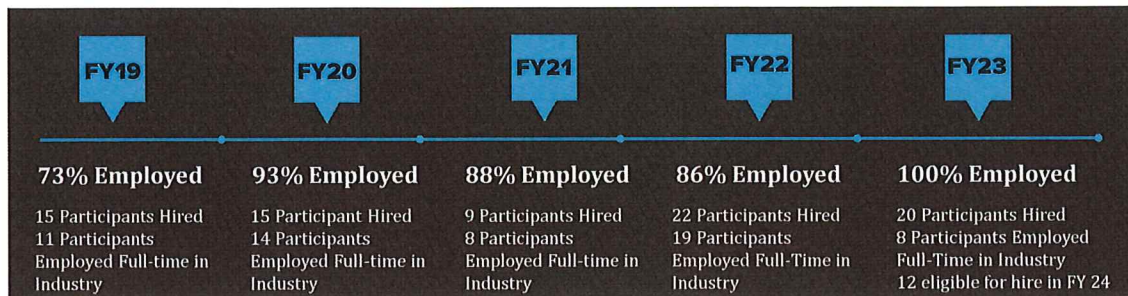
16

16

Supporting our Community - Jobs

Career Training Academy & Apprenticeship Programs

Created apprenticeship programs to develop a workforce skilled in much-needed water and wastewater expertise



CHARLOTTE WATER



17

17

FY 2025 Operational Challenges

- **Regulatory**
 - Lead and Copper Rule Revision and associated galvanized services
 - Per- and Polyfluorinated Substances (PFAS) (Forever Chemicals)
- **Internal**
 - Vacancies and recruitment
 - Growing capital infrastructure needs
- **External**
 - Patterns of Growth
- **Financial**
 - Rate Pressures
 - Credit Rating and increased borrowing costs
 - Increased cost of contracted service (construction, professional services) related to inflation

CHARLOTTE WATER



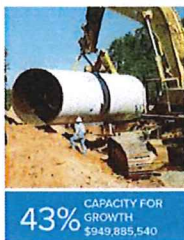
18

18

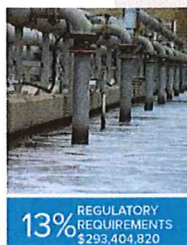
Charlotte Water Proposed Budget



31% REHABILITATION & REPLACEMENT
\$691,780,240



43% CAPACITY FOR GROWTH
\$949,885,540



13% REGULATORY REQUIREMENTS
\$293,404,820



3% UTILITY SUPPORT
\$78,340,272



10% COMMITMENT TO PUBLIC PROJECTS
\$217,461,870

FY 25 Charlotte Water Operating budget = ~\$614.4 million

FY25-FY29 CIP budget = \$2.2 Billion

- Expanded due to growth & development
- Increases in rehabilitation & regulatory requirement

CHARLOTTE WATER



19

FY 2025 Water/Sewer Financial Planning

- Supports regulatory requirements and strategic priorities
- Moderate annual fee increases to address Council priorities and system growth
- Ensure rate payer equity
- Sustain AAA credit rating
- Meet financial targets and adhere to financial policies
 - >250 Days Cash on Hand
 - >2.0x Debt Service Coverage Ratio
 - >40% Pay-Go as a % of Total CIP

	FY 2023	FY 2024	FY 2025
Fee Increases	3.54%	4.25%	5.75%-5.99%

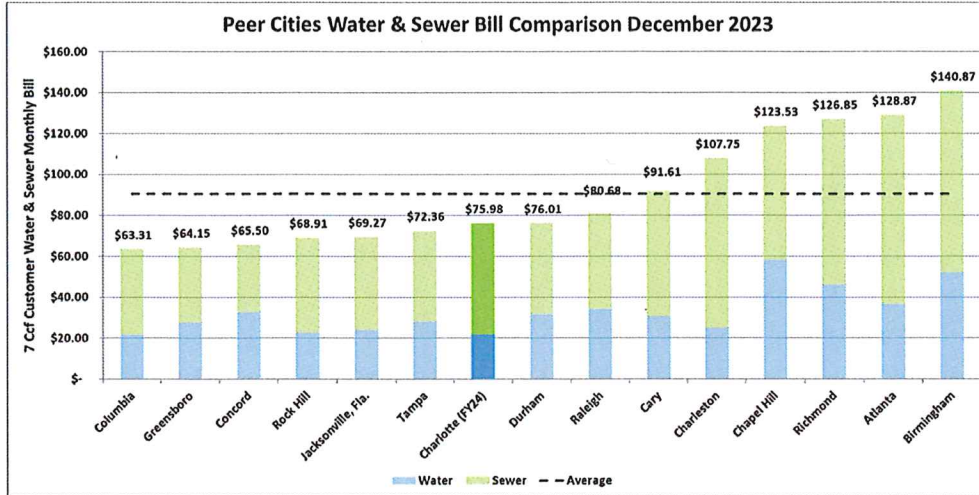
FY25 increase for 7 CCF ratepayer is \$4.37- \$4.55/month
(~\$1.20-\$1.38 per month above FY24 projection)

CHARLOTTE WATER



20

FY 2024 Adopted Rate Comparison



CHARLOTTE WATER



21

21

Multi-Year Rate Comparison

City	FY2023 Rate % Increase	FY2024 Rate % Increase	FY2024 Average Customer Bill	2 Yr Additive Rate Change
Winston Salem, NC (ICL)*	11.98%	3.17%	\$ 68.47	15.15%
Greensboro, NC	4.62%	8.54%	\$ 64.15	13.16%
Cape Fear PUA, NC	8.42%	4.27%	\$ 83.23	12.69%
Fayetteville, NC (OCL)	3.55%	6.81%	\$ 151.57	10.36%
Fayetteville, NC (ICL)	3.55%	6.79%	\$ 86.60	10.34%
Winston Salem, NC (OCL)*	9.82%	0.00%	\$ 89.45	9.82%
Durham, NC	3.87%	5.25%	\$ 76.01	9.12%
Charlotte, NC	3.54%	4.25%	\$ 75.98	7.79%
Raleigh, NC (OCL)	1.47%	3.87%	\$ 154.57	5.34%
Raleigh, NC (ICL)	0.61%	4.52%	\$ 80.68	5.13%

OCL-outside city limits; ICL-inside city limits

*Calculated based on 5,000 gallons provided by UNC-SOG Environmental Finance Center

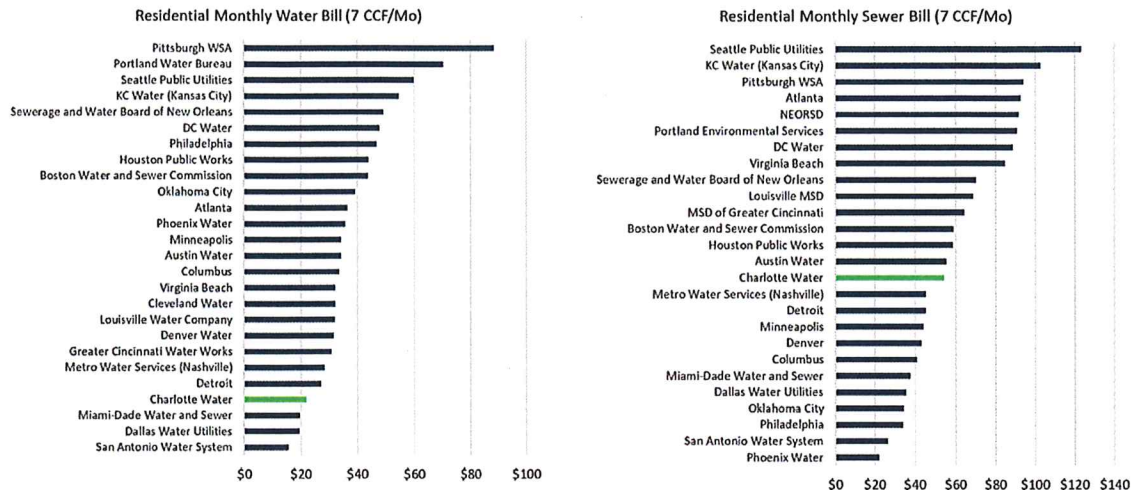
CHARLOTTE WATER



22

22

Competitive Water and Sewer Rates



CHARLOTTE WATER



23

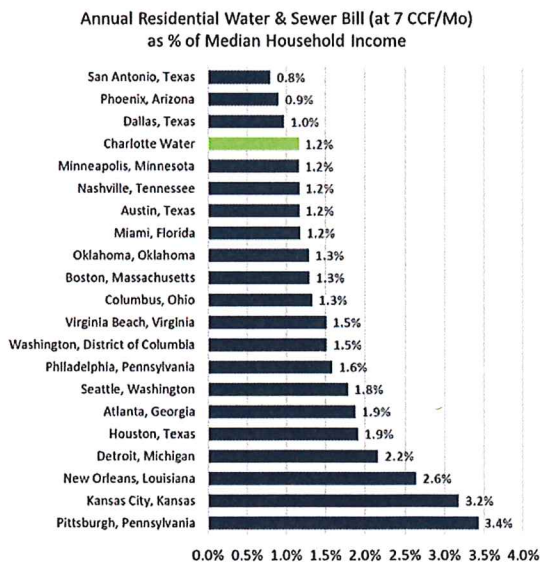
23

Strong Relative Affordability

► Charlotte Water rates and affordability compare favorably to other large urban utilities

Source: Median Household Income from census.gov data.

Annual residential customer bill data from each utility's most recent rates and charges.



CHARLOTTE WATER



24

24

Community Engagement and Support

- **First meeting of Helping Hands Outreach board on January 12, 2024**
- **Mission elements**
 - Water, wastewater, and stormwater bill support for qualified need
 - Connection to CLTW infrastructure for qualified, low-income customers
- **Transitional board to establish key qualification and administrative policies prior to onboarding new team (July 2024)**



CHARLOTTE WATER



25

25

Questions

CHARLOTTE WATER



26

26