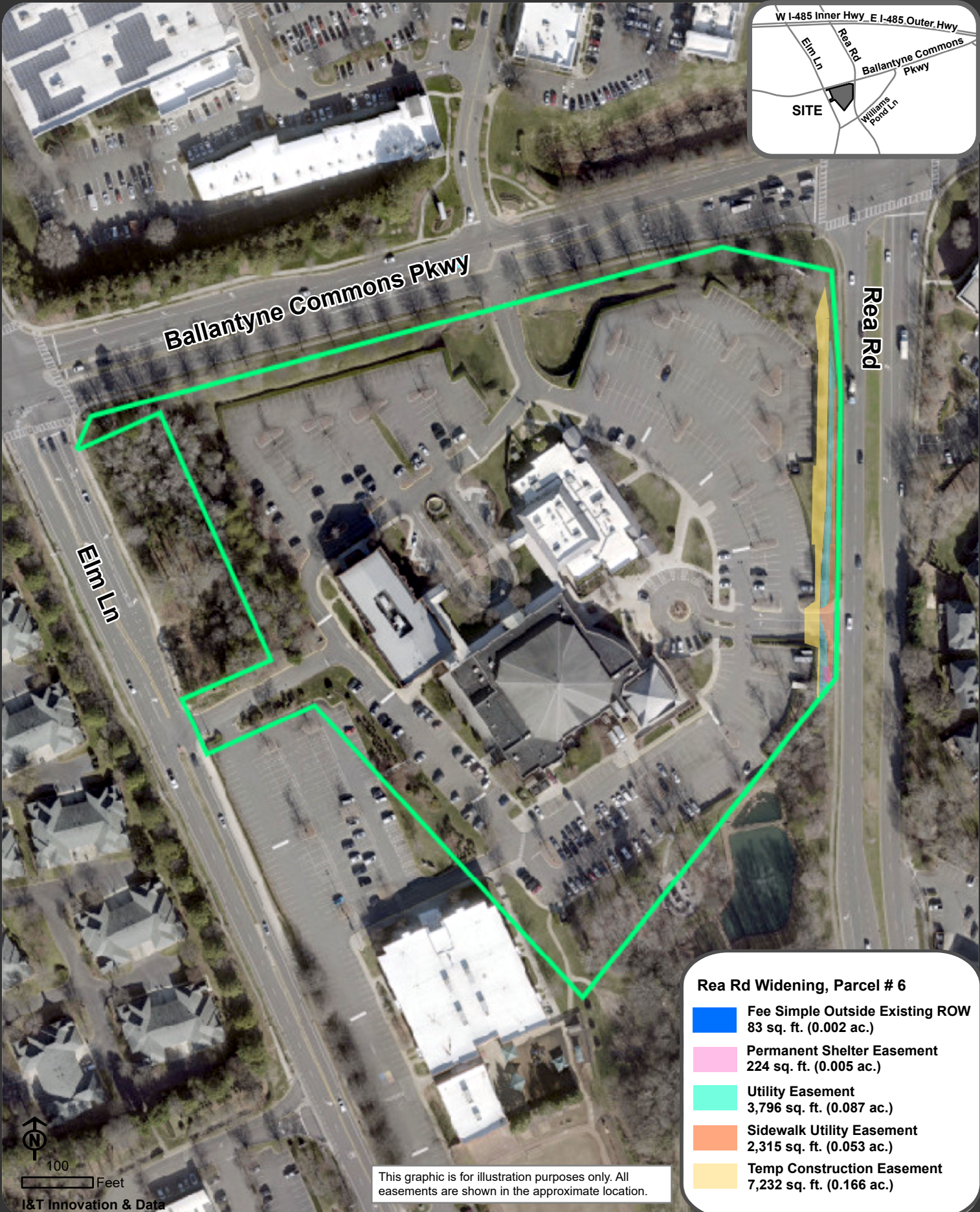
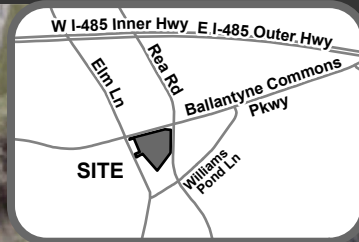


Location Map: Property Transactions - Rea Road Widening, Parcel # 6 - Council District 7



- ### Rea Rd Widening, Parcel # 6
- Fee Simple Outside Existing ROW
83 sq. ft. (0.002 ac.)
 - Permanent Shelter Easement
224 sq. ft. (0.005 ac.)
 - Utility Easement
3,796 sq. ft. (0.087 ac.)
 - Sidewalk Utility Easement
2,315 sq. ft. (0.053 ac.)
 - Temp Construction Easement
7,232 sq. ft. (0.166 ac.)

This graphic is for illustration purposes only. All easements are shown in the approximate location.