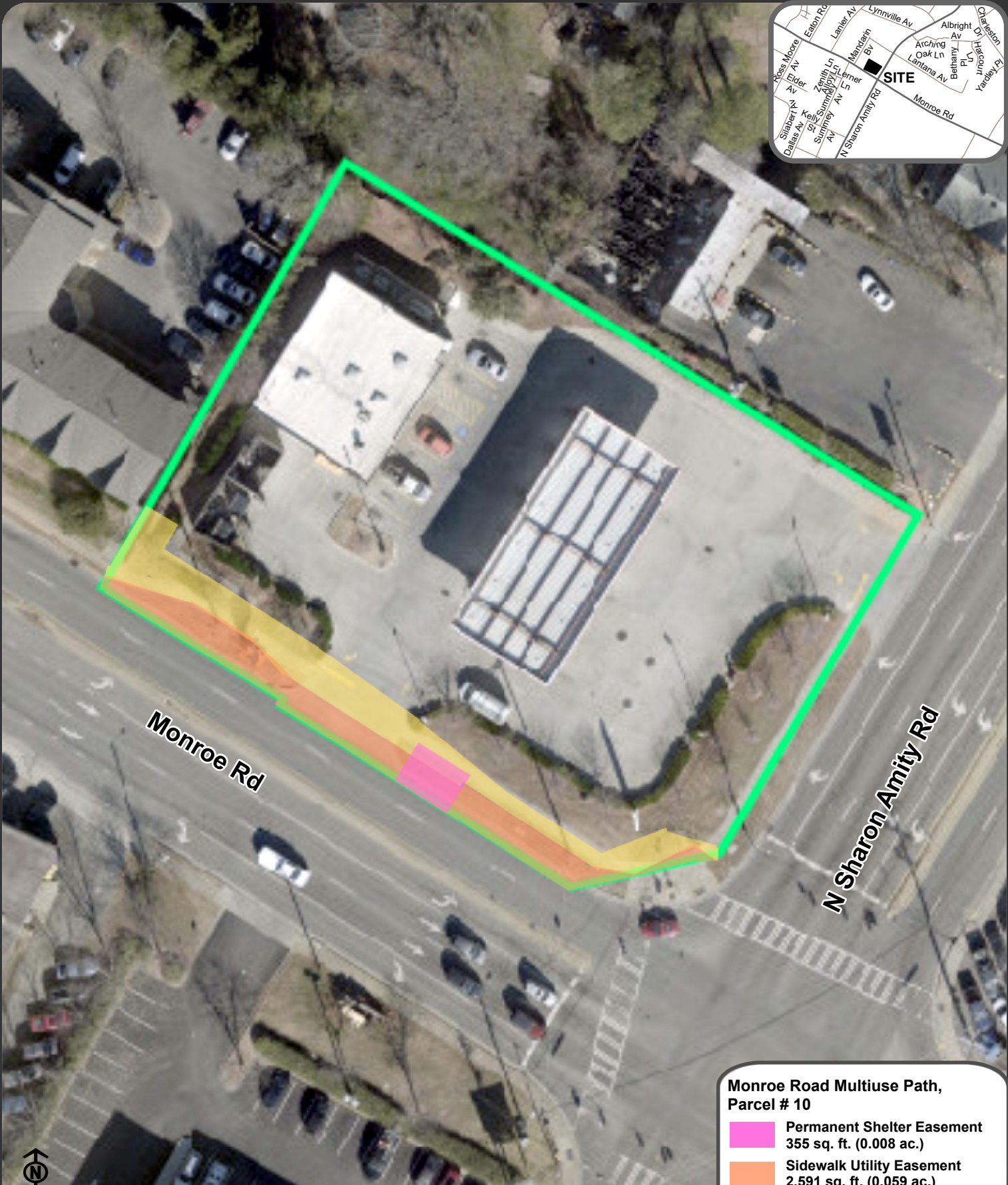


Location Map: Property Transactions - Monroe Road Multiuse Path, Parcel # 10 - Council District 5



Monroe Road Multiuse Path, Parcel # 10

- Permanent Shelter Easement
355 sq. ft. (0.008 ac.)
- Sidewalk Utility Easement
2,591 sq. ft. (0.059 ac.)
- Temp Construction Easement
2,734 sq. ft. (0.063 ac.)

This graphic is for illustration purposes only. All easements are shown in the approximate location.