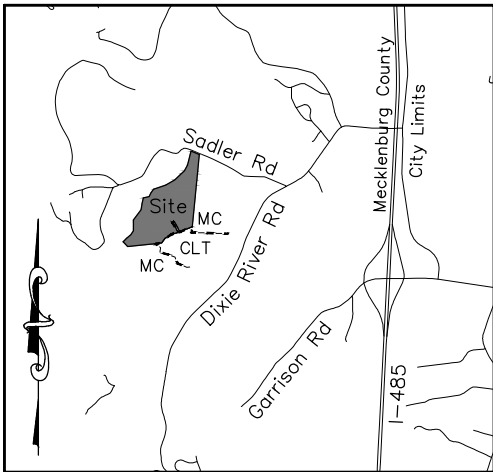


Exhibit 'A'



Vicinity Map - Not to Scale

Notes:

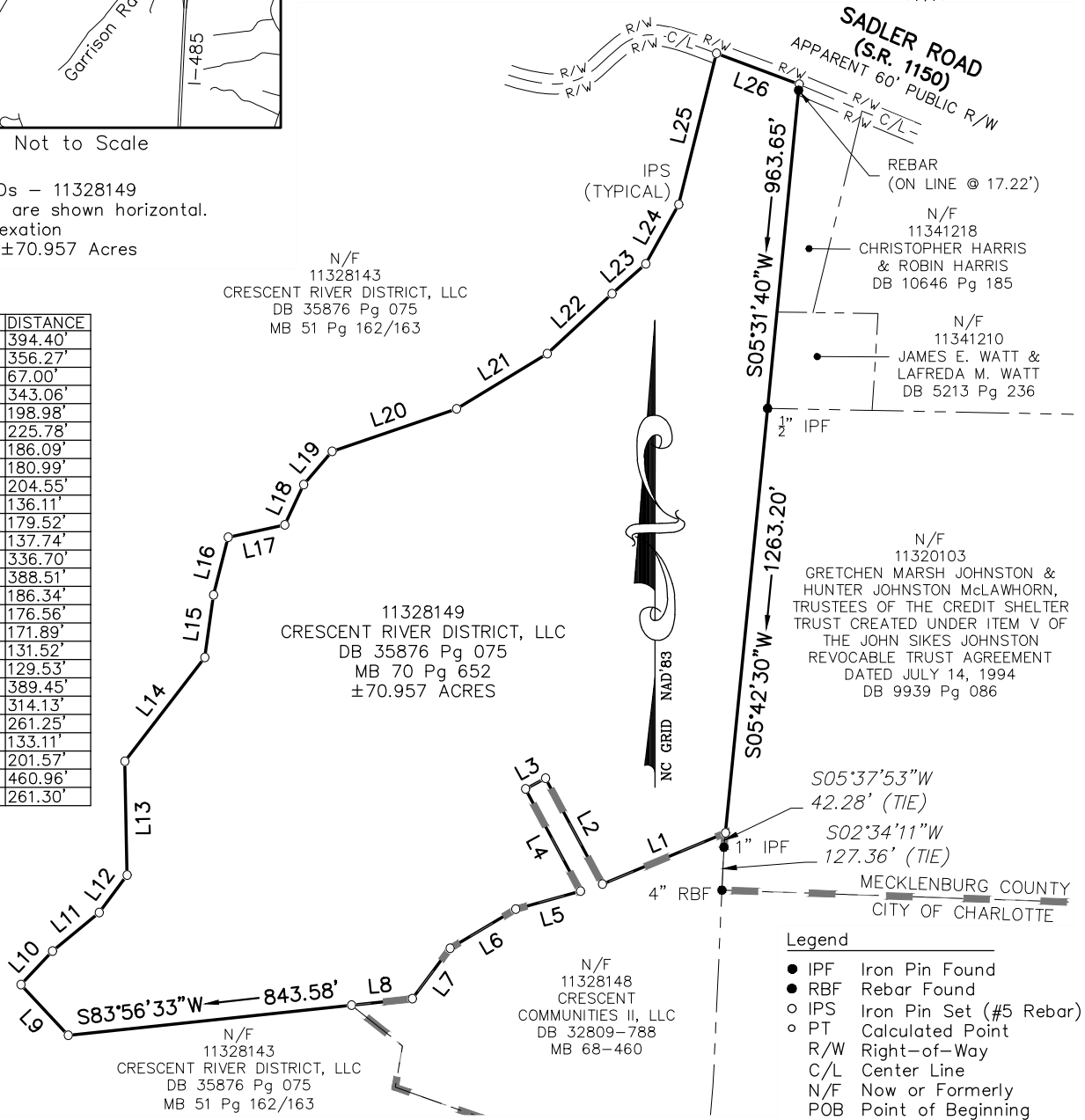
1. Tax Parcel IDs - 11328149
2. All distances are shown horizontal.
3. Area of Annexation
Total Area: ±70.957 Acres

I certify that this map of the annexation limits and municipal boundary of the City of Charlotte were derived from instruments recorded at the Mecklenburg County Register of Deeds. The bearings and distances are for informational purposes only. This plat is not subject to review by the City Planning Department.

Seth F. Martin L-4719 Date



LINE	BEARING	DISTANCE
L1	S67°21'00"W	394.40'
L2	N28°14'41"W	356.27'
L3	S61°45'22"W	67.00'
L4	S28°14'41"E	343.06'
L5	S74°17'55"W	198.98'
L6	S59°03'17"W	225.78'
L7	S36°48'36"W	186.09'
L8	S84°00'47"W	180.99'
L9	N42°59'07"W	204.55'
L10	N43°06'38"E	136.11'
L11	N50°33'35"E	179.52'
L12	N36°34'54"E	137.74'
L13	N01°04'13"W	336.70'
L14	N37°29'14"E	388.51'
L15	N07°59'37"E	186.34'
L16	N14°05'25"E	176.56'
L17	N77°44'44"E	171.89'
L18	N25°05'36"E	131.52'
L19	N40°20'31"E	129.53'
L20	N71°12'42"E	389.45'
L21	N58°37'55"E	314.13'
L22	N47°09'13"E	261.25'
L23	N48°44'48"E	133.11'
L24	N28°54'22"E	201.57'
L25	N14°01'51"E	460.96'
L26	S69°25'48"E	261.30'



- Legend**
- IPF Iron Pin Found
 - RBF Rebar Found
 - IPS Iron Pin Set (#5 Rebar)
 - PT Calculated Point
 - R/W Right-of-Way
 - C/L Center Line
 - N/F Now or Formerly
 - POB Point of Beginning
 - DB Deed Book
 - MB Map Book
 - MC Mecklenburg County
 - CLT City of Charlotte
 - City Limits

GPI
 Geospatial, Inc.
 201 West 29th Street
 Charlotte, NC 28206
 License No.: F-1388
 Phone: (704) 337-8329

Voluntary Annexation Map for River District - Preserve East

Charlotte, North Carolina
 Tax Parcel IDs: 11328149
 References: DB 35876-075; MB 70-652

