

5200 Buffington Rd.
Atlanta Georgia,
30349-2998
PH 404-765-8000
FAX 404-684-8550

REVISION SCHEDULE

NO. DATE DESCRIPTION

1. 8-11-2022

2. 8-11-2022

3. 8-11-2022

4. 8-11-2022

5. 8-11-2022

6. 8-11-2022

7. 8-11-2022

8. 8-11-2022

9. 8-11-2022

10. 8-11-2022

11. 8-11-2022

12. 8-11-2022

13. 8-11-2022

14. 8-11-2022

15. 8-11-2022

16. 8-11-2022

17. 8-11-2022

18. 8-11-2022

19. 8-11-2022

20. 8-11-2022

21. 8-11-2022

22. 8-11-2022

23. 8-11-2022

24. 8-11-2022

25. 8-11-2022

26. 8-11-2022

27. 8-11-2022

28. 8-11-2022

29. 8-11-2022

30. 8-11-2022

31. 8-11-2022

32. 8-11-2022

33. 8-11-2022

34. 8-11-2022

35. 8-11-2022

36. 8-11-2022

37. 8-11-2022

38. 8-11-2022

39. 8-11-2022

40. 8-11-2022

41. 8-11-2022

42. 8-11-2022

43. 8-11-2022

44. 8-11-2022

45. 8-11-2022

46. 8-11-2022

47. 8-11-2022

48. 8-11-2022

49. 8-11-2022

50. 8-11-2022

51. 8-11-2022

52. 8-11-2022

53. 8-11-2022

54. 8-11-2022

55. 8-11-2022

56. 8-11-2022

57. 8-11-2022

58. 8-11-2022

59. 8-11-2022

60. 8-11-2022

61. 8-11-2022

62. 8-11-2022

63. 8-11-2022

64. 8-11-2022

65. 8-11-2022

66. 8-11-2022

67. 8-11-2022

68. 8-11-2022

69. 8-11-2022

70. 8-11-2022

71. 8-11-2022

72. 8-11-2022

73. 8-11-2022

74. 8-11-2022

75. 8-11-2022

76. 8-11-2022

77. 8-11-2022

78. 8-11-2022

79. 8-11-2022

80. 8-11-2022

81. 8-11-2022

82. 8-11-2022

83. 8-11-2022

84. 8-11-2022

85. 8-11-2022

86. 8-11-2022

87. 8-11-2022

88. 8-11-2022

89. 8-11-2022

90. 8-11-2022

91. 8-11-2022

92. 8-11-2022

93. 8-11-2022

94. 8-11-2022

95. 8-11-2022

96. 8-11-2022

97. 8-11-2022

98. 8-11-2022

99. 8-11-2022

100. 8-11-2022

101. 8-11-2022

102. 8-11-2022

103. 8-11-2022

104. 8-11-2022

105. 8-11-2022

106. 8-11-2022

107. 8-11-2022

108. 8-11-2022

109. 8-11-2022

110. 8-11-2022

111. 8-11-2022

112. 8-11-2022

113. 8-11-2022

114. 8-11-2022

115. 8-11-2022

116. 8-11-2022

117. 8-11-2022

118. 8-11-2022

119. 8-11-2022

120. 8-11-2022

121. 8-11-2022

122. 8-11-2022

123. 8-11-2022

124. 8-11-2022

125. 8-11-2022

126. 8-11-2022

127. 8-11-2022

128. 8-11-2022

129. 8-11-2022

130. 8-11-2022

131. 8-11-2022

132. 8-11-2022

133. 8-11-2022

134. 8-11-2022

135. 8-11-2022

136. 8-11-2022

137. 8-11-2022

138. 8-11-2022

139. 8-11-2022

140. 8-11-2022

141. 8-11-2022

142. 8-11-2022

143. 8-11-2022

144. 8-11-2022

145. 8-11-2022

146. 8-11-2022

147. 8-11-2022

148. 8-11-2022

149. 8-11-2022

150. 8-11-2022

151. 8-11-2022

152. 8-11-2022

153. 8-11-2022

154. 8-11-2022

155. 8-11-2022

156. 8-11-2022

157. 8-11-2022

158. 8-11-2022

159. 8-11-2022

160. 8-11-2022

161. 8-11-2022

162. 8-11-2022

163. 8-11-2022

164. 8-11-2022

165. 8-11-2022

166. 8-11-2022

167. 8-11-2022

168. 8-11-2022

169. 8-11-2022

170. 8-11-2022

171. 8-11-2022

172. 8-11-2022

173. 8-11-2022

174. 8-11-2022

175. 8-11-2022

176. 8-11-2022

177. 8-11-2022

178. 8-11-2022

179. 8-11-2022

180. 8-11-2022

181. 8-11-2022

182. 8-11-2022

183. 8-11-2022

184. 8-11-2022

185. 8-11-2022

186. 8-11-2022

187. 8-11-2022

188. 8-11-2022

189. 8-11-2022

190. 8-11-2022

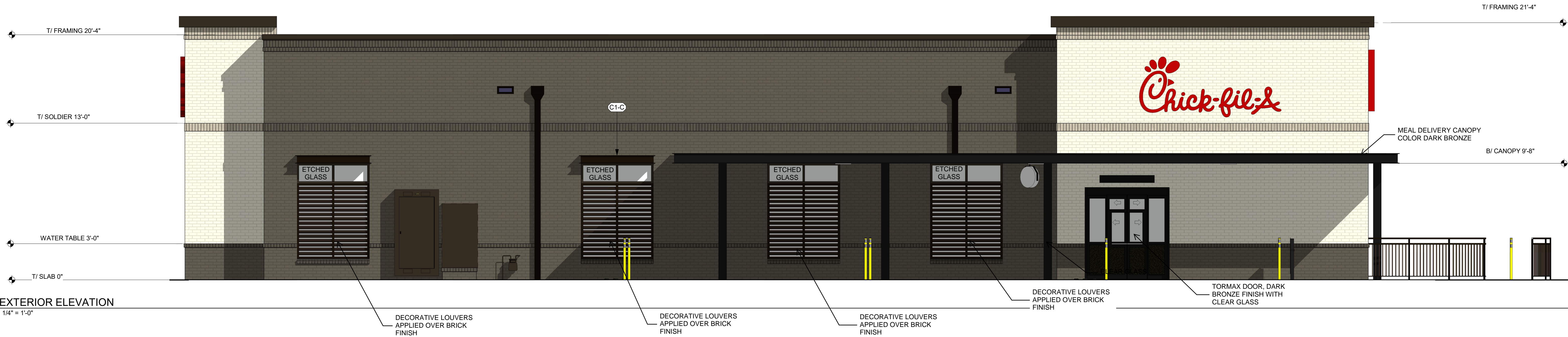
191. 8-1

6/21/2022 2:58:29 PM BIM 360/INC_01231_Cotswold DTO_2021.1 DTO:01231_Cotswold DTO_ARC.rvt
XX-DTO-01231-X-902-Building Elevations - Rendering

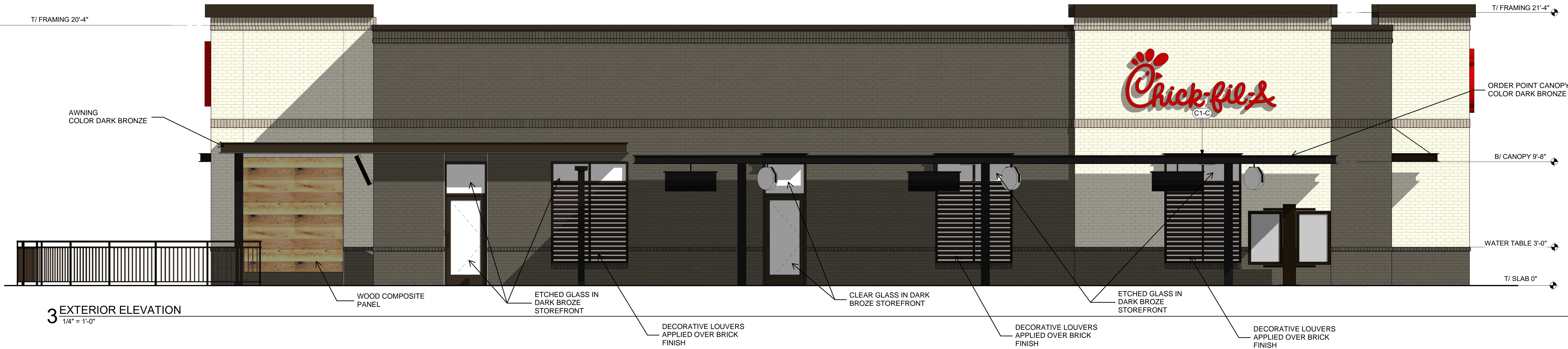
1 EXTERIOR ELEVATION
1/4" = 1'-0"



2 EXTERIOR ELEVATION
1/4" = 1'-0"



3 EXTERIOR ELEVATION
1/4" = 1'-0"



4 EXTERIOR ELEVATION
1/4" = 1'-0"

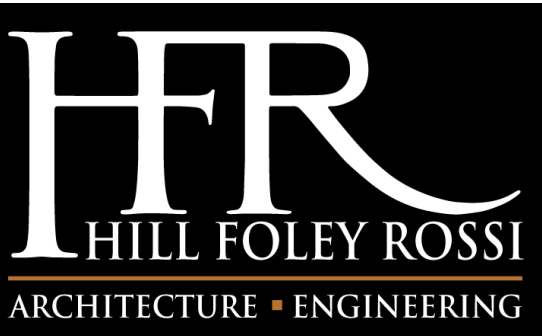


EXTERIOR FINISHES

 (BR-A) BRICK VENEER COLOR: DARK GRAY SIZE: MODULAR	 (EC-1) PREFINISHED METAL COPING COLOR: MIDNIGHT BRONZE
 (BR-B) BRICK VENEER COLOR: WHITE SIZE: MODULAR	 (PT-113) EXTERIOR PAINT COLOR: DARK BRONZE FINISH: SEMI-GLOSS
 (CM-1) WOOD COMPOSITE PANEL COLOR: GOLDEN OAK	 (ST-1) STOREFRONT COLOR: DARK BRONZE



Chick-fil-A
5200 Buffington Road
Atlanta, Georgia
30349-2998



HILL FOLEY ROSSI & ASSOCIATES
3680 Pleasant Hill Road, Suite 200
Duluth, Georgia 30096
770.622.9858
www.hfrass.com

© Copyright (see detail below). This drawing and all reproductions thereof are the property of Hill Foley Rossi & Associates, LLC (HFR). It is intended for the sole use of the project named herein. Reproduction without the written consent of HFR is unlawful. All copies are to be returned to HFR upon project completion.

CHICK-FIL-A
Cotswold

4431 Randolph Road
Charlotte, NC 28211-2325

FSR#01231

BUILDING TYPE / SIZE: P13 DTO RC
RELEASE: 22.02

PRINTED FOR
Design Development

REVISION SCHEDULE
NO. DATE DESCRIPTION

CONSULTANT PROJECT # 20.412.00
DATE 03.07.2022

DRAWN BY: Author
Information contained on this drawing and in all digital files produced for above named project may not be reproduced in any manner without express written or verbal consent from authorized project representatives.

SHEET Building Elevations - Rendering

SHEET NUMBER

X-902