


# Charlotte Water #OneWaterStrong

**CHARLOTTE WATER**  #onewaterstrong

1

1

## Mission & Vision

**INFRASTRUCTURE FOR THE FUTURE**  
Support growth, mobility, accessibility and reliability



**SUSTAINABILITY**  
Regulatory compliance to protect residents and waterways



**EQUITY & INCLUSION**  
Provide services equitably for the benefit of all



### Mission

Charlotte Water provides reliable, high-quality services to our community through valued employees, financial stability, and environmental stewardship

### Vision

To be a leading water utility, recognized for excellence and dedicated to our people, community, region, and environment



**CHARLOTTE WATER** 

2

2

## Charlotte Water Performance in Pandemic

**Managed through staffing shortages  
Every Charlotte Water WWTP  
qualified for a Peak Performance  
Award (NACWA)**

- McAlpine Creek 14 years of perfect permit compliance

**Every Charlotte Water WTP produced  
water with perfect compliance**

- Distributed 39.6 Billion Gallons Completed
- 175,000 water quality tests
- 3,045 repairs
- Several large-scale projects at plants and in pipe system



CHARLOTTE WATER



3

3

## Over \$200M Invested in Corridors of Opportunity

### Beatties Ford / Rozzelles Ferry

Charlotte Water: 3 Projects  
Storm Water Services: 1 Project  
**Combined Capital Investment: \$41M**

### Freedom Drive / Wilkinson

Charlotte Water: 7 Projects  
Storm Water Services: 11 Projects  
**Combined Capital Investment: \$33M**

### West Boulevard

Charlotte Water: 3 Projects  
Storm Water Services: 3 Projects  
**Combined Capital Investment: \$11M**

### Sugar Creek / I-85

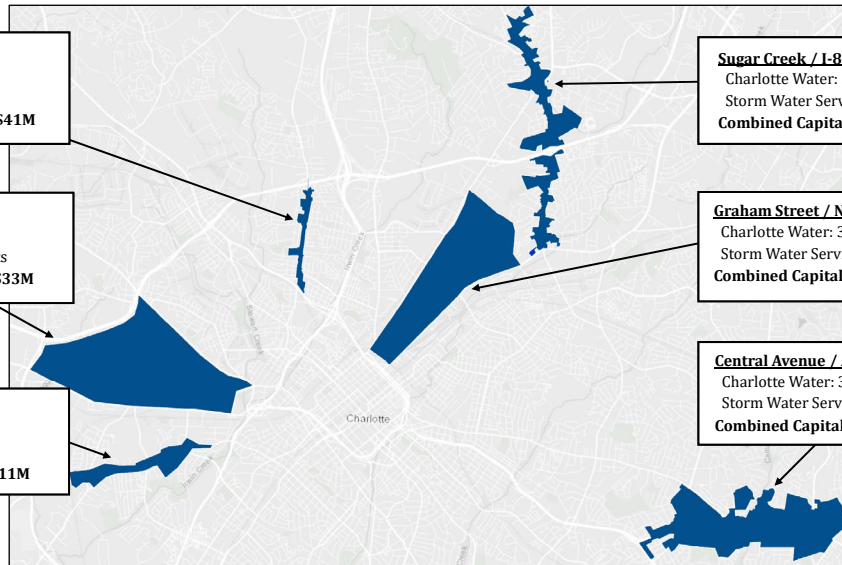
Charlotte Water: 5 Projects  
Storm Water Services: 2 Projects  
**Combined Capital Investment: \$37M**

### Graham Street / N. Tryon

Charlotte Water: 3 Projects  
Storm Water Services: 8 Projects  
**Combined Capital Investment: \$22M**

### Central Avenue / Albemarle Rd.

Charlotte Water: 3 Projects  
Storm Water Services: 7 Projects  
**Combined Capital Investment: \$68M**



CHARLOTTE WATER



4

## Proposed FY23 Budget

**FY23 Charlotte Water budget = ~\$534 million**

### Budget Drivers

- Increases in regulatory requirements
- \$16 million increase in PAYGO contributions
- Funding for community initiatives
- Increases in fuel, power, and chemical costs

### Enhancement Focus Areas

- Well-Managed Government
- Economic Development
- Safe, Healthy, and Inclusive Community
- Mobility, Accessibility, and Connectivity



37%  
OPERATING  
\$194.9 Million

63%  
CAPITAL  
\$339.0 Million

CHARLOTTE WATER



5

5

## Proposed Capital Investment Program

Five-year CIP  
= \$2.65 billion

54% \$1.4 Billion



CAPACITY FOR GROWTH

26% \$684.9 Million



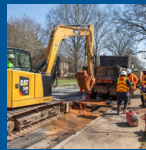
REHABILITATION & REPLACEMENT

10% \$260.3 Million



REGULATORY REQUIREMENTS

7% \$183.8 Million



COMMITMENT TO PUBLIC PROJECTS

3% \$84.3 Million



UTILITY SUPPORT

CHARLOTTE WATER



6

6

## Charlotte Water's Regional Economic Impact

### Job Created

- **81 JOBS** created for every **\$1 MILLION** spent
- **5,000 JOBS** created from **\$500 MILLION** in O&M and capital spending in FY 2021
- **7,000 JOBS** supported over the next **5 YEARS**
- **246,000 JOBS** created in water-dependent industries in six-county region in 2021

### Economic Output

- **\$17.7 MILLION** in growth for every **\$1 MILLION** spent
- **\$6.3 BILLION** generated by Charlotte Water spending
- **\$30.9 BILLION** contributed to Mecklenburg County by water-dependent industries
- **\$46.5 BILLION** contributed to six-county region by water-dependent industries

\*2022 Economic Impact Assessment Report

## Financial Planning

### 10-Year Financial Model

#### Maintain triple AAA ratings

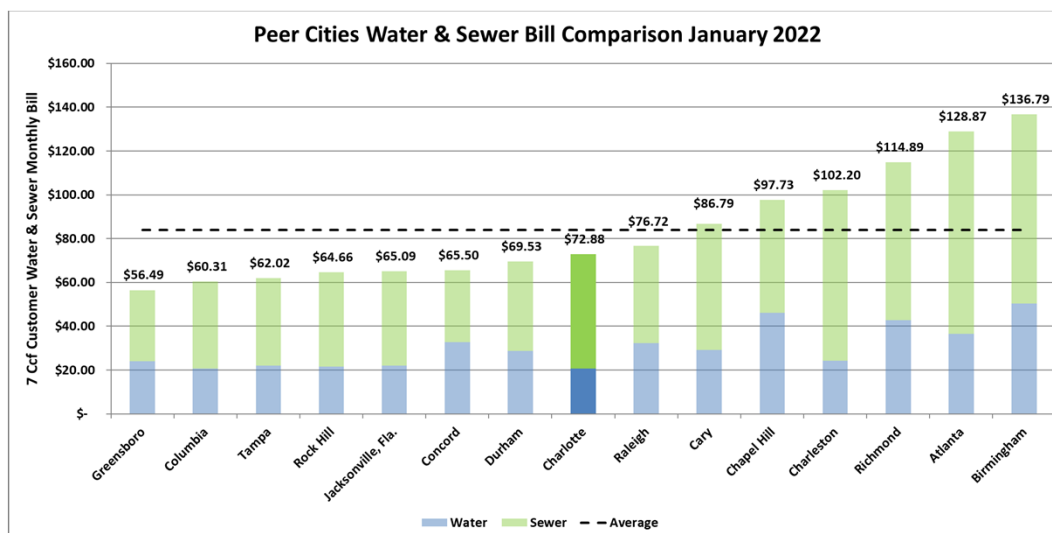
- Cash reserves of  $\geq$  250 days cash-on-hand
- Revenue Bond Coverage Ratio of  $\geq$  2.0x

Fiscal Year	FY2020 Financial Model Projected	Adopted Rate Increases	FY2023 Financial Model Projects
2021	3.38%	1.86%	
2022	3.43%	3.42%	
2023	3.57%		3.50% - 3.75%
2024	3.61%		
2025	3.48%		
2026	3.52%		

*\* 1 gallon of water less than 3 cents*

7

## Rate Comparison



8





QUESTIONS?



= #OneWaterStrong

