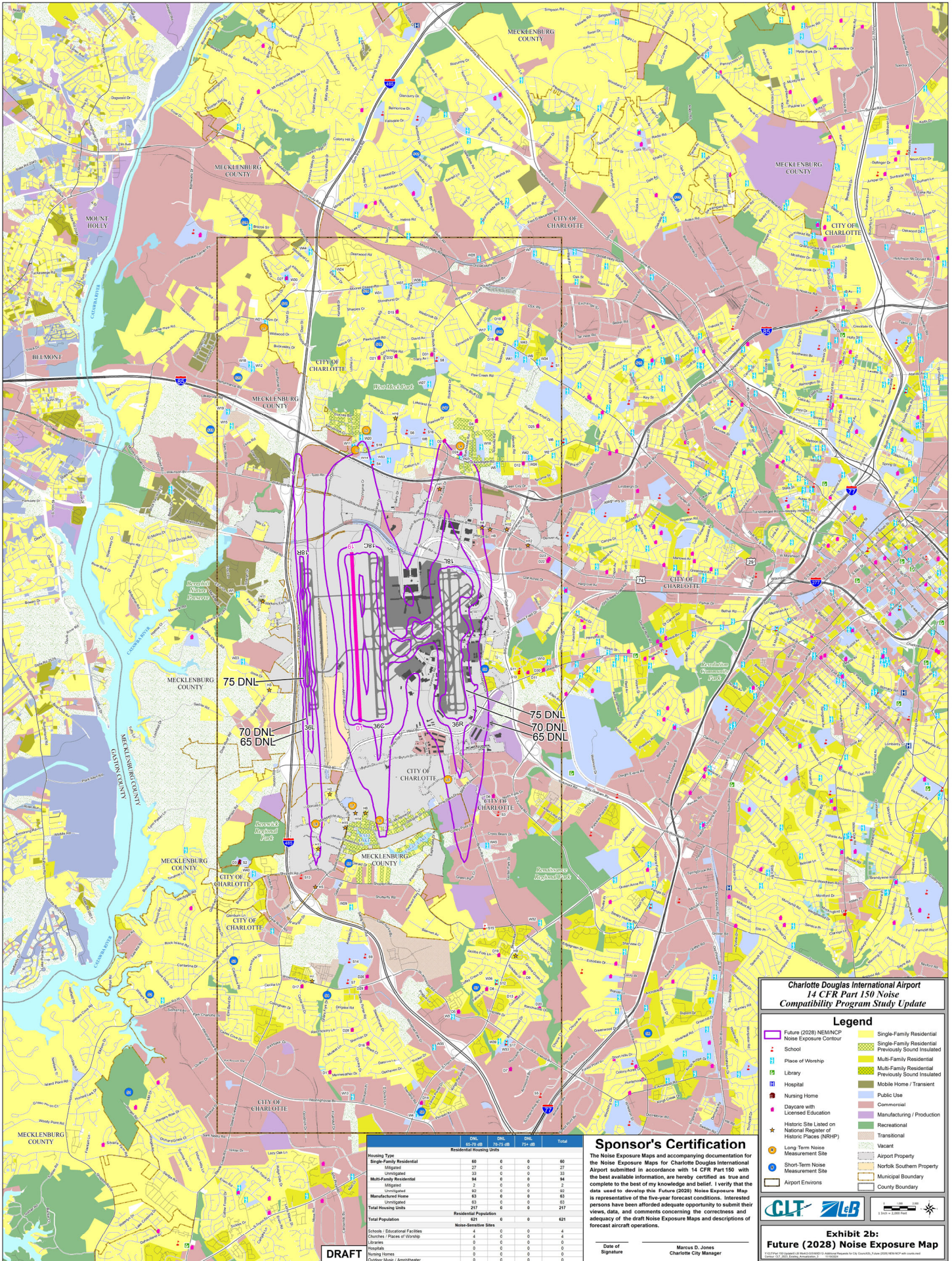


Exhibit 2b: Future (2028) Noise Exposure Map



**Charlotte Douglas International Airport
14 CFR Part 150 Noise
Compatibility Program Study Update**

Legend

Future (2028) NEMANCP Noise Exposure Contour	Single-Family Residential
School	Single-Family Residential Previously Sound Insulated
Place of Worship	Multi-Family Residential
Library	Multi-Family Residential Previously Sound Insulated
Hospital	Mobile Home / Transit
Nursing Home	Public Use
Daycare with Licensed Education	Commercial
Historic Sites Listed on National Register of Historic Places (NRHP)	Manufacturing / Production
Long Term Noise Measurement Site	Recreational
Short-Term Noise Measurement Site	Transitional
Airport Environs	Vacant
	Airport Property
	Norfolk Southern Property
	Municipal Boundary
	County Boundary

Housing Type

	DNL 65-70 db	DNL 70-75 db	DNL 75-80 db	Total
Residential Housing Units				
Single-Family Residential	60	0	0	60
Mitigated	27	0	0	27
Unmitigated	33	0	0	33
Multi-Family Residential	88	0	0	88
Mitigated	2	0	0	2
Unmitigated	86	0	0	86
Manufactured Home	43	0	0	43
Unmitigated	43	0	0	43
Total Housing Units	197	0	0	197
Total Population	624	0	0	624
Noise-Sensitive Sites				
Schools / Educational Facilities	4	0	0	4
Churches / Places of Worship	4	0	0	4
Daycare	0	0	0	0
Hospitals	0	0	0	0
Nursing Homes	0	0	0	0
Daycare / Home / Asph/phalt	0	0	0	0

Sponsor's Certification

The Noise Exposure Maps and accompanying documentation for the Noise Exposure Maps for Charlotte Douglas International Airport submitted in accordance with 14 CFR Part 150 with the best available information, are hereby certified as true and complete to the best of my knowledge and belief. I verify that the data used to develop this Future (2028) Noise Exposure Map is representative of the five-year forecast conditions. Interested persons have been afforded adequate opportunity to submit their views, data, and comments concerning the correctness and adequacy of the draft Noise Exposure Maps and descriptions of forecast aircraft operations.

Date: _____
Signature: **Marcus D. Jones**
Charlotte City Manager

**Exhibit 2b:
Future (2028) Noise Exposure Map**

CLT | LEB

Scale: 1 inch = 2,000 feet

DRAFT