



**CHARLOTTE**<sup>SM</sup>

# Extraterritorial Jurisdiction (ETJ) Policing

January 22, 2018

- Extraterritorial Jurisdiction (ETJ) Overview
- Law enforcement agreements between City of Charlotte and Mecklenburg County
- Agreement update

- ETJs are areas outside city limits that is likely to become part of the city or town limits.
  - Subject to Planning & Development regulations
  - Property owners taxed for police and rural fire protection
  - Residents do not vote in City Council elections



# Current ETJ Policing Services

- Charlotte-Mecklenburg Police Department (CMPD) jurisdiction:
  - City of Charlotte and ETJ
  - Cornelius ETJ
  - Huntersville ETJ
  - Mint Hill ETJ
  - Pineville Sphere of Influence
- Services include standard patrol responses and specialty units, such as canine and crime scene support, when needed
- The six surrounding Towns provide police services within their respective town limits



# Funding Police Services in the ETJs

- Law Enforcement Service District (LESD) created in 1996 to fund law enforcement services in the ETJs
- Levied on ETJ residents
  - FY 2018 rate: 21.46 cents per \$100 assessed value



# Current LESD Budget Formula

## Step 1

Determine ETJs share of CMPD's total jurisdiction

CMPD Service District, FY 2018	
City of Charlotte Population	808,585
Cumulative ETJ Population	60,911
<b>CMPD Total Service District</b>	<b>869,496</b>
<b>ETJ Share of Service District Population</b>	<b>7%</b>

## Step 2

Multiply CMPD's overall budget by the ETJ share of population

County's Estimated FY 2018 LESD Cost	
CMPD Budget	\$257 million
ETJ Share of Service District Population	7%
<b>County Share of LESD Cost</b>	<b>\$18 million</b>

## Recent Actions

- In April 2017, Mecklenburg County Board of Commissioners gave the required 14-month notice to terminate the Consolidated Agreement
- As of July 1, 2018, CMPD will no longer be the law enforcement authority within the ETJs
- However, the City and County have continued discussions and are working through a new agreement



# Proposed Contract Modifications

- Clean up language no longer pertinent
- Eliminate the Huntersville ETJ, Cornelius ETJ, and Pineville sphere of influence from CMPD's police service
  - CMPD will continue to provide service in the Charlotte ETJ, the Town of Mint Hill ETJ, and at the McGuire Nuclear Power Plant
- Increased emphasis on CMPD data reporting to the Board of County Commissioners





# Proposed Contract Modifications

- Reduction in County payment to the City
  - From \$18.0 million in FY 2018 to \$14.0 million in FY 2019
  - Annual increase commensurate with property value growth in the remaining ETJs
  - Property tax rate in ETJs should be maintained at 21.46 cents (set by the County)
- 5 year initial term, with 23 month required notice for termination by either party

- Staff is continuing to work with Mecklenburg County to finalize to contract modifications
- Council will see a potential agreement for approval at an upcoming Council meeting



**CHARLOTTE**

# Resource Slides

# Extraterritorial Jurisdictions

- CMPD's estimated total service area: 869,496

<b>FY 2018 Population Estimates</b>			
<b>Municipality</b>	<b>City Limits</b>	<b>ETJ</b>	<b>Total</b>
Charlotte	808,585	47,477	856,062
Cornelius	28,943	277	29,220
Davidson*	12,633	773	13,406
Huntersville	56,223	2,373	58,596
Matthews	28,756	-	28,756
Mint Hill*	25,182	5,919	31,101
Pineville	8,580	4,092**	12,672
Stallings*	401	-	401
<b>Total</b>	<b>969,303</b>	<b>60,911</b>	<b>1,030,214</b>

\*Include Mecklenburg County portion only

\*\*Former Pineville Sphere (1984-2014)

# Timeline of Agreements

Agreement between city and county provides certain officers county-wide jurisdiction

**1975**

Amends original Consolidation Agreement to include funding mechanism for CMPD services within ETJs

**1996**

**1969**

House Bill 1366 granted countywide jurisdiction to Charlotte Police Department

**1993**

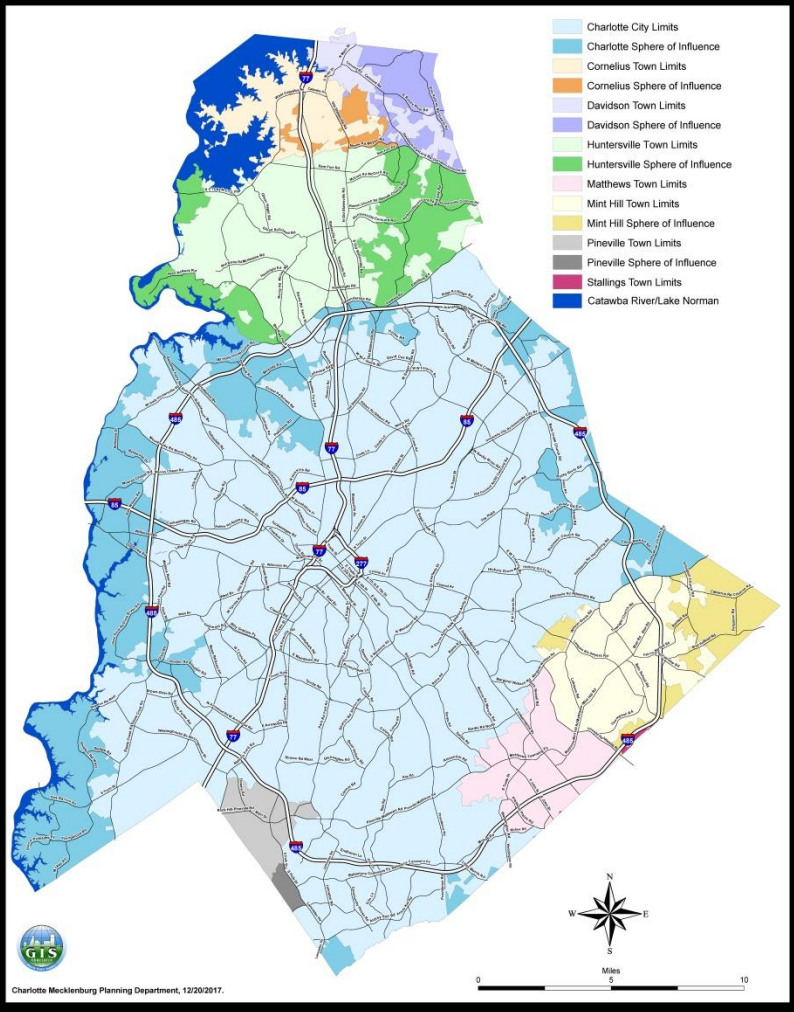
Consolidation Agreement creates CMPD and establishes CMPD jurisdiction within ETJs

**2017**

Board of Commissioners votes unanimously to terminate the 1996 Consolidation Agreement, ending CMPD jurisdiction within ETJs

# History

## Mecklenburg County Spheres of Influence



- In 1984, Spheres of Influence agreements were established between Charlotte and the six Mecklenburg Towns that set future annexation boundaries
- Five of the six towns renewed the annexation agreements in 2014
- Pineville renewal is now under discussion
- The agreements allowed for orderly annexation as growth occurred County-wide