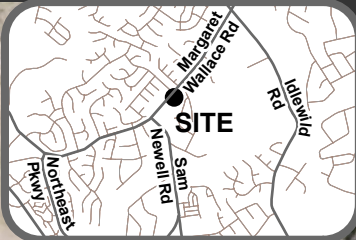
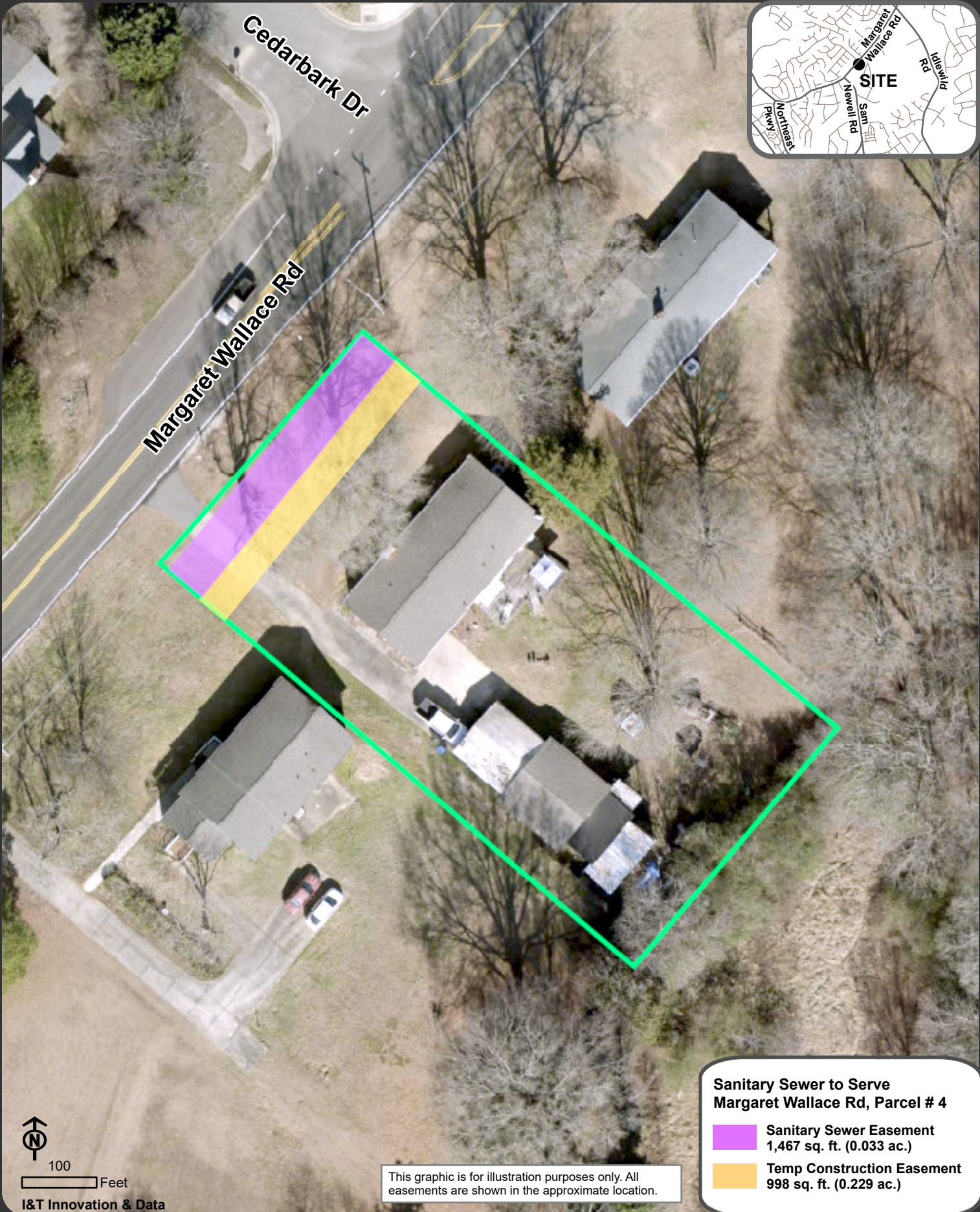




Location Map: Property Transactions - Sanitary Sewer to Serve Margaret Wallace Road, Parcel # 4 - Council District 5



Sanitary Sewer to Serve Margaret Wallace Rd, Parcel # 4

-  Sanitary Sewer Easement
1,467 sq. ft. (0.033 ac.)
-  Temp Construction Easement
998 sq. ft. (0.229 ac.)

This graphic is for illustration purposes only. All easements are shown in the approximate location.



100 Feet