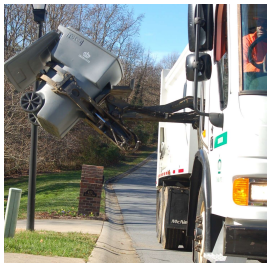


The Future of Solid Waste Services

MARCH 24, 2025 BUDGET WORKSHOP

Current Residential Services



**Garbage
Collections
Weekly**



**Yard Waste
Collections
Weekly**



**Recycling
Collections
Bi-weekly
(contracted provider)**



**Bulky
Collections
By appointment
(unlimited)**

Additional Services Provided by Solid Waste Services



Comparing Typical Cost of Government to North Carolina Peers



Cost of Government Includes: The graph above shows the cost of local government service for a typical household and includes city property taxes, county property taxes, water/wastewater, stormwater, solid waste, and local sales tax costs.



Planning for FY 2026 Budget:

Analyzing Residential Service Fees

 CITY of CHARLOTTE

5

What Expenses Does the Current Fee Recover?

The Solid Waste ordinance defines the fee as supporting “residential solid waste services”, which includes garbage, yard waste, bulky item, and recycling collection and disposal

FY25 Cost Estimates by Service Type – All Residential

Garbage	Yard Waste	Bulky	Recycling	Total
\$47.6M	\$16.4M	\$7.2M	\$15.0M	\$86.2M

Fee Revenue: \$39.6M = 46% of Costs

Cost by Residential Service Type

FY25 Cost Estimates by Service Type - Curbside

Garbage	Yard Waste	Bulky	Recycling	Total
\$35.2M	\$16.4M	\$5.1M	\$13.3M	\$70.0M

Fee Revenue: \$24.04M = 34% of Costs

FY25 Cost Estimates by Service Type - Dumpster

Garbage	Yard Waste	Bulky	Recycling	Total
\$12.4M	\$38K	\$2.1M	\$1.7M	\$16.2M

Fee Revenue: \$15.56M = 96% of Costs

Analyze Service Fees

► Review Frequency and Types of Services

- *Maintain core services*
- *Consideration of current community needs and service options*
- *Capital and Equipment Costs vs. Operating Costs*

► Manage long-term cost drivers (e.g. labor, equipment)

► Align fees to service type

- *Currently one fee regardless of service: Curbside/Dumpster*

► Additional considerations under review:

- *Frequency and costs for bulky item pickups*
- *Small Business rate*



Looking Ahead:
Continue to
Assess Service
Options



**Yard Waste
Services**

Strategies to Improve Worker Safety and Service Efficiencies

Strategy 1



Convert to paper bags for yard waste



Strategy 2



Analyzing further opportunities for conversion to automation and service efficiencies

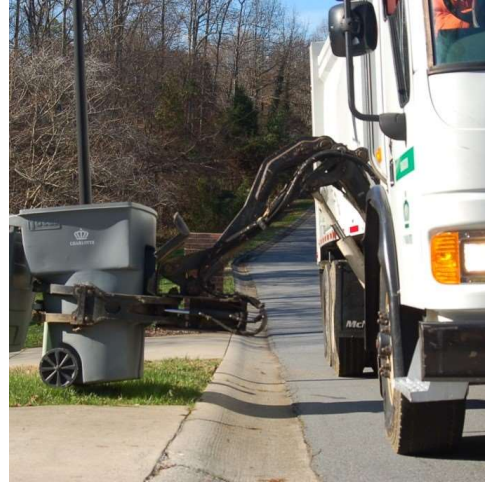
✓ **Implemented:** Utilization of Compostable Paper Bags

- Yard Waste transition to paper bags implemented in July 2021
- Plastic bags are not accepted at the Mecklenburg County Compost Facility
- Eliminated need for workers to stand by truck and open plastic bags with a knife
- Paper bags are biodegradable
- **Work in conjunction with yard waste carts**

Solid Waste Services has been transitioning services to automated side-loader trucks



Rear-loader



Automated Side-loader

In Progress: Assessing Considerations for Conversion to Roll-out Cart Program for Yard Waste

Advantages

- Worker safety
- Long-term operational efficiency
- Reduces loose material awaiting pickup
- Equitable level of service

Challenges

- Significant initial capital investment
- Some residents may not have space for yard waste cart

Comparison of Yard Waste Programs in North Carolina

	Bans Plastic Bags?	City-issued Cart?	Cart Cost	Quantity/ Size Limits?	Limit
Charlotte	✓	✗	NA	✗	None
Cary	✓	✗	NA	✓	240 cubic feet
Concord	✓	✗	NA	✗	limb piles over 6 cubic yards require fee payment in advance
Durham	✓	✓	\$90/yr subscription	✓	10 bags (paper)
Fayetteville	✗	✓	\$60/cart+\$25 delivery fee	✓	10 items
Greensboro	✓	✓	NA	✓	10 bags/bundles (15 Nov-Feb)
Greenville	✗	✗	NA	✗	None
High Point	✓	✓	\$70/cart	✗	None
Raleigh	✓	✓	NA	✓	15 bags + 5 bundles
Wilmington	✗	✗	NA	✓	7 cubic yards
Winston-Salem	✓	✓	\$130/cart + \$65/year	✓	3 carts

Potential Yard Waste Options Under Review

- **Side-Loader (weekly)**
 - Consider implementation of yard waste carts
- **Rear-Loader: consider service limitations (seasonal/scheduled)**
 - Seasonal: Compostable bags outside cart collected October – December only
 - Scheduled: Limbs and logs not in carts must be scheduled for collection
 - Limited to a total volume of 128 cubic feet or size of a refrigerator on its back
 - Separate in small piles
 - Limbs < 4 feet in length and 18 inches in diameter
 - Logs < 50 pounds



Other Yard Waste Considerations:

- Scheduled services
- Limiting weekly volume

Solid Waste Transfer Station



Factoria Transfer Station, King County, WA

Proximity and Accessibility of Disposal Location

Partner with County on options for Transfer Stations



Interior view transfer station Cape Girardeau, MT

Solid Waste Transfer Station

- ▶ **A transfer station is a facility utilized to temporarily store and consolidate loads from several waste collection vehicles into a single, larger vehicle for transport to a final disposal facility such as a landfill.**
- ▶ **Transfer station availability is an important component of planning for future solid waste service delivery needs.**
- ▶ **Benefits of a Transfer Station include:**
 - **Less wear and tear on vehicles** - transfer stations are completely paved and remove the need for trucks to traverse gravel and dirt roads; which leads to lower repair costs and extends the useful life of the vehicles;
 - **Quicker return to routes for collection** – transfer stations reduce the time spent traveling to/from and at the landfill, which improves the collection time availability;
 - **Ability to provide collection services to additional infill growth;** and
 - **Facilitating collection compliance of contracted partners,** as they experience the same issues.



Transfer station, City of Greensboro, NC

Transfer Station Path Forward

- ▶ **A Transfer Station was added to the Advanced Planning Program in FY 2025; land has not yet been identified that meets the desired criteria**
 - Minimum of a 10-acre site with adequate street access for refuse trucks and tractor trailers
 - Ideally located inside city limits (inside Mecklenburg County could be considered if the location improved efficiency)
 - Land should be located as centrally as possible for greatest effectiveness
- ▶ **Mecklenburg County Waste Management Advisory Board has advised the city and county partner on a long-term strategy**

Solid Waste Interlocal Agreement with Mecklenburg County (expires in 2028)

- ▶ **Revise partnership with the County to optimize services**
- ▶ **Overview:**
 - City is responsible for the collection of recyclables, yard waste and solid waste within City.
 - County is responsible for operating all recycling, yard waste, and solid waste management facilities to which City is required to deliver recyclables, yard waste and solid waste collected within City's corporate limits.
- ▶ **Considerations**
 - Landfill tipping fees: Review of tipping fees that the County charges to the City to use landfills
 - Review Recycling services cost/benefits and service options
 - *The city pays a vendor to collect residential recycling and take the materials to a County owned facility.*

