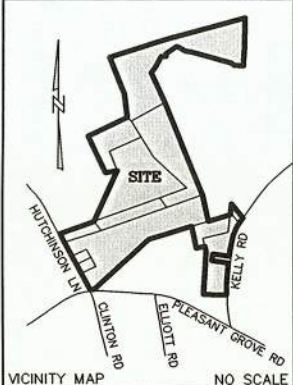


NOTES:

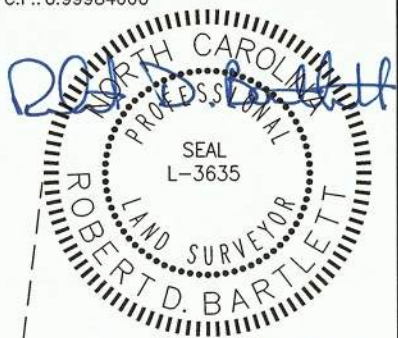
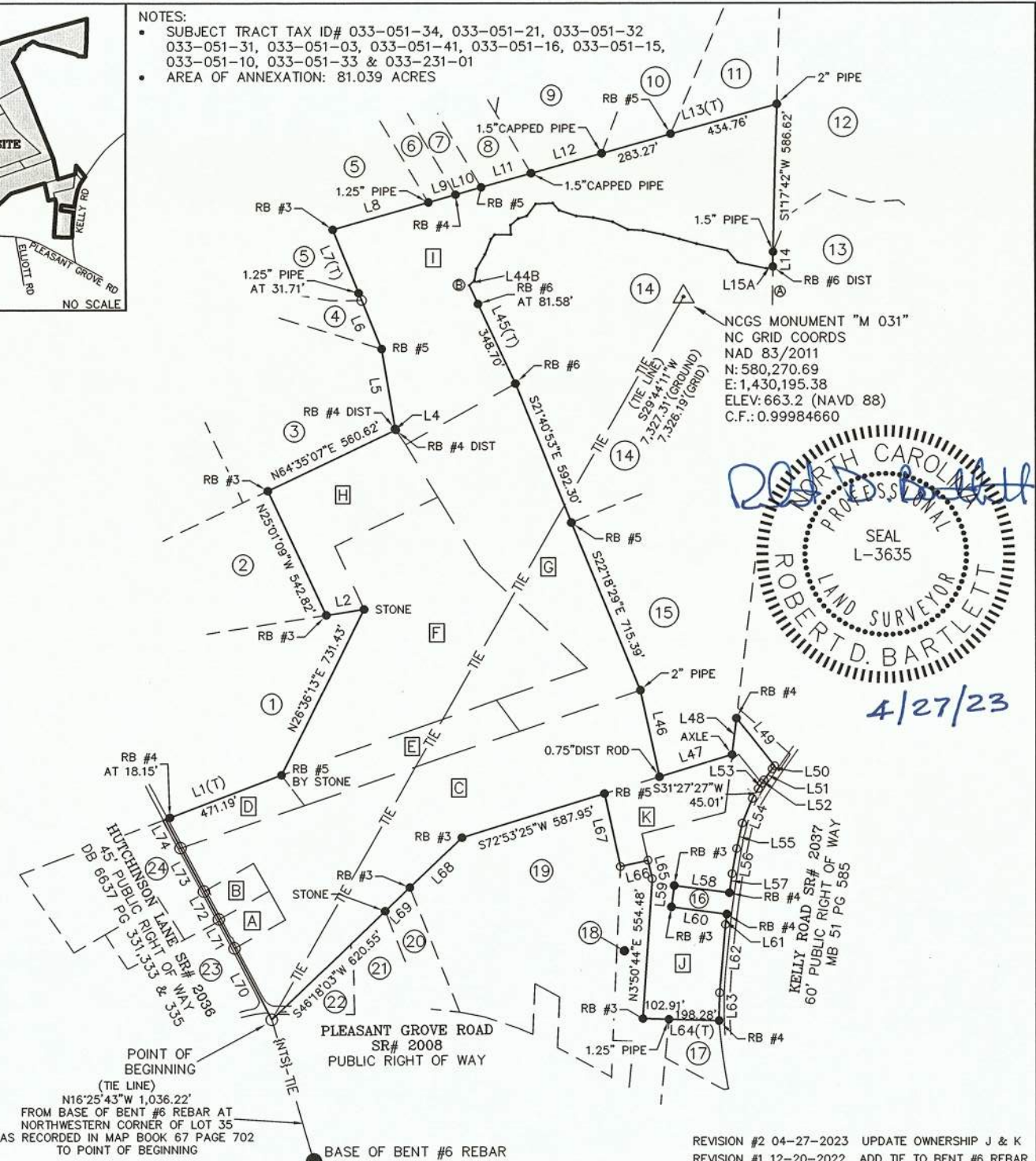
- SUBJECT TRACT TAX ID# 033-051-34, 033-051-21, 033-051-32, 033-051-31, 033-051-03, 033-051-41, 033-051-16, 033-051-15, 033-051-10, 033-051-33 & 033-231-01
- AREA OF ANNEXATION: 81.039 ACRES



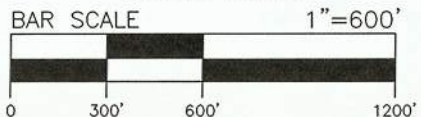
VICINITY MAP NO SCALE



NORTH ORIENTED TO
NAD 83/2011



4/27/23



© 2021, ESP ASSOCIATES, INC. ALL RIGHTS RESERVED. COPIES OF THE ORIGINAL OF THIS DOCUMENT DISTRIBUTED BY THE SURVEYOR BEAR THE ORIGINAL SIGNATURE AND EMBOSSED SEAL OF THE SURVEYOR.



FIRM#: F-1407

ESP Associates, Inc.
P.O. Box 7030
Charlotte, NC 28241
3475 Lakemont Blvd.
Fort Mill, SC 29708
704-583-4949 (NC)
803-802-2440 (SC)
www.espassociates.com

REVISION #2 04-27-2023 UPDATE OWNERSHIP J & K
REVISION #1 12-20-2022 ADD TIE TO BENT #6 REBAR

<p>ANNEXATION SURVEY OF: GALLOWAY RIDGE DEVELOPMENT BEING 81.039 ACRES</p>		PROJECT NO	DM20.800
		SCALE	1"=600'
<p>LOCATED IN: PAW CREEK TOWNSHIP MECKLENBURG COUNTY NORTH CAROLINA</p>		DATE	03/31/2022
		DRAWN BY	TFB
<p>CLIENT: MERITAGE HOMES OF THE CAROLINAS, INC.</p>		CHECKED BY	RDB
		DRAWING NO	1049_900_ANNEX-REV2
<p>13925 BALLANTYNE CORPORATE PLACE SUITE 300, CHARLOTTE, NORTH CAROLINA, 28277</p>		<p>SHEET 1 OF 4</p>	

INTERIOR OWNERSHIP

PARCELS	TAX#	OWNER	DEED REFERENCE	MAP REFERENCE
A	033-051-34	MERITAGE HOMES OF THE CAROLINAS, INC.	DB 36926 PG 487	N/A
B	033-051-31	MERITAGE HOMES OF THE CAROLINAS, INC.	DB 36926 PG 444	N/A
C	033-051-16	MERITAGE HOMES OF THE CAROLINAS, INC.	DB 36926 PG 444	N/A
D	033-051-21	MERITAGE HOMES OF THE CAROLINAS, INC.	DB 36926 PG 444	N/A
E	033-051-32	MERITAGE HOMES OF THE CAROLINAS, INC.	DB 36926 PG 444	N/A
F	033-051-03	MERITAGE HOMES OF THE CAROLINAS, INC.	DB 36926 PG 444	N/A
G	033-051-33	MERITAGE HOMES OF THE CAROLINAS, INC.	DB 37781 PG 237 DB 37781 PG 33	N/A
H	033-051-41	MERITAGE HOMES OF THE CAROLINAS, INC.	DB 36926 PG 481	N/A
I	033-231-01	MERITAGE HOMES OF THE CAROLINAS, INC.	DB 36926 PG 444	N/A
J	033-051-15	MERITAGE HOMES OF THE CAROLINAS, INC.	DB 38043 PG 394	MB 51 PG 585
K	033-051-10	MERITAGE HOMES OF THE CAROLINAS, INC.	DB 38043 PG 389	MB 51 PG 585



REVISION #2 04-27-2023 UPDATE OWNERSHIP J & K
REVISION #1 12-20-2022 ADD TIE TO BENT #6 REBAR

© 2021, ESP ASSOCIATES, INC. ALL RIGHTS RESERVED. COPIES OF THE ORIGINAL OF THIS DOCUMENT DISTRIBUTED BY THE SURVEYOR BEAR THE ORIGINAL SIGNATURE AND EMBOSSED SEAL OF THE SURVEYOR.



ESP Associates, Inc.
P.O. Box 7030
Charlotte, NC 28241
3475 Lakemont Blvd.
Fort Mill, SC 29708
704-583-4949 (NC)
803-802-2440 (SC)
www.espassociates.com

ANNEXATION SURVEY OF: GALLOWAY RIDGE DEVELOPMENT BEING 81.039 ACRES	PROJECT NO DM20.800
	SCALE NO SCALE
LOCATED IN: PAW CREEK TOWNSHIP MECKLENBURG COUNTY NORTH CAROLINA	DATE 03/31/2022
	DRAWN BY TFB
CLIENT: MERITAGE HOMES OF THE CAROLINAS, INC. 13925 BALLANTYNE CORPORATE PLACE SUITE 300, CHARLOTTE, NORTH CAROLINA, 28277	CHECKED BY RDB
	DRAWING NO 1049_900_ANNEX-REV2
SHEET 2 OF 4	

ADJOINER OWNERS TABLE

PARCEL	TAX#	OWNER	DEED REFERENCE	MAP REFERENCE
1	033-051-22	YVONNE W. FELTS	DB 6615 PG 844	N/A
2	033-051-29	KRISTIN ALCALDE INGLE & ALEXANDER DAVID INGLE	DB 36780 PG 213	N/A
3	033-051-39	TRUST GREENWAY #9460	DB 36860 PG 843	N/A
4	033-051-28	TRUST GREENWAY #9460	DB 36862 PG 726	N/A
5	033-231-10	MECKLENBURG COUNTY	DB 29635 PG 132	N/A
6	033-231-09	JAMES FRASER CRAWFORD & NANCY HIPP	DB 8663 PG 808	N/A
7	033-231-08	PHOUA THAO	DB 16102 PG 363	N/A
8	033-231-07	PHOUA THAO	DB 16102 PG 363	N/A
9	033-231-06	FONG YANG & SOUA YANG	DB 27005 PG 187	N/A
10	033-231-04	RICKEY LANE ELLIOTT	DB 8249 PG 472	LT 1, MB 34 PG 819
11	033-231-02	DOUGLAS WAYNE ELLIOTT & SANDRA BEASLEY	DB 4125 PG 523	LT 2, MB 34 PG 819
12	033-086-08	GAITHER A. LAWING & GINGER O. LAWING	DB 7462 PG 763	N/A
13	033-081-03	RONALD J. BREWER & BEVERLY A. BREWER	DB 4278 PG 58	N/A
14	033-051-19	SANDRA LEWIS WIGGINS	DB 5266 PG 718	LT 1, MB 27 PG 431
15	033-051-40	YVONNE WIGGINS FELTS	DB 8888 PG 702	LT 2&2A, MB 27 PG 431
16	033-051-30	MIGUEL ANGEL SANTOS	DB 37343 PG 341	N/A
17	033-051-14	ROGER DEAN JORDAN & DONNA LYNN JORDAN	DB 28933 PG 470	LT 6, MB 51 PG 585
18	033-051-35	S.R. MOZELEY PROPERTIES, LLC	DB 31084 PG 111	LT 2, MB 51 PG 585
19	033-051-08	STEVEN RAY MOZELEY	DB 31450 PG 375	N/A
20	033-051-07	STEVEN RAY MOZELEY	DB 31450 PG 375	N/A
21	033-051-06	ROBERT BARRY GAETANO & JAMES ELLIOTT GAETANO	DB 1423 PG 292	LT 2, MB 30 PG 917
22	033-051-17	ROBERT B. GAETANO & JANE B. GAETANO	DB 3275 PG 081	N/A
23	033-031-09	PLEASANT GROVE METHODIST CHURCH	DB 1077 PG 212	N/A
24	033-031-21	AMY KENLEY McGEE	DB 15541 PG 697	LT 1, MB 26 PG 525



REVISION #2 04-27-2023 UPDATE OWNERSHIP J & K
REVISION #1 12-20-2022 ADD TIE TO BENT #6 REBAR

© 2021, ESP ASSOCIATES, INC. ALL RIGHTS RESERVED. COPIES OF THE ORIGINAL OF THIS DOCUMENT DISTRIBUTED BY THE SURVEYOR BEAR THE ORIGINAL SIGNATURE AND EMBOSSED SEAL OF THE SURVEYOR.



FIRM#: F-1407

ESP Associates, Inc.

P.O. Box 7030
Charlotte, NC 28241
3475 Lakemont Blvd.
Fort Mill, SC 29708
704-583-4949 (NC)
803-802-2440 (SC)
www.espassociates.com

ANNEXATION SURVEY OF: GALLOWAY RIDGE DEVELOPMENT BEING 81.039 ACRES	PROJECT NO DM20.800
	SCALE NO SCALE
LOCATED IN: PAW CREEK TOWNSHIP MECKLENBURG COUNTY NORTH CAROLINA	DATE 03/31/2022
	DRAWN BY TFB
CLIENT: MERITAGE HOMES OF THE CAROLINAS, INC. 13925 BALLANTYNE CORPORATE PLACE SUITE 300, CHARLOTTE, NORTH CAROLINA, 28277	CHECKED BY RDB
	DRAWING NO 1049_900_ANNEX-REV2
SHEET 3 OF 4	

LINE TABLE		
LINE #	DIRECTION	LENGTH
L1	N69°15'57"E	489.34'
L2	S81°02'36"W	152.01'
L4	N30°44'09"W	5.47'
L5	N09°23'27"W	321.31'
L6	N22°15'11"W	207.66'
L7	N22°10'13"W	303.47'
L8	N74°09'06"E	393.96'
L9	N74°08'04"E	111.89'
L10	N74°08'49"E	105.69'
L11	N74°13'18"E	204.33'
L12	N74°05'36"E	288.88'
L13	N74°09'26"E	718.03'
L14	S01°02'28"W	59.66'
L45	S25°01'25"E	430.28'
L46	S12°28'08"E	349.75'
L47	N73°06'31"E	299.12'
L48	N07°00'19"E	145.08'
L49	S38°33'05"E	241.25'
L50	S40°46'19"W	15.41'
L51	S36°15'24"W	54.41'
L52	S32°55'40"W	15.59'
L53	S32°56'46"W	25.01'
L54	S22°07'57"W	104.97'
L55	S12°29'57"W	103.12'
L56	S10°13'57"W	101.17'
L57	S08°02'04"W	75.70'
L58	N82°29'22"W	220.17'
L59	S07°29'36"W	85.02'
L60	S82°30'14"E	220.52'
L61	S06°52'26"W	40.99'

LINE TABLE		
LINE #	DIRECTION	LENGTH
L62	S04°59'56"W	271.53'
L63	S01°07'34"W	109.71'
L64	N88°27'16"W	301.19'
L65	N12°43'17"W	74.21'
L66	S77°29'09"W	112.18'
L67	N12°18'40"W	294.42'
L68	S46°23'46"W	285.51'
L69	S46°22'12"W	134.86'
L70	N27°20'10"W	318.28'
L71	N28°22'19"W	130.02'
L72	N28°13'07"W	125.07'
L73	N28°13'07"W	194.59'
L74	N27°31'53"W	128.22'

LINE TABLE A TO B		
LINE #	DIRECTION	LENGTH
L15 A	S76°04'33"W	28.42'
L16	N77°50'23"W	113.65'
L17	N41°12'08"W	62.16'
L18	N77°15'48"W	124.26'
L19	N74°25'06"W	71.41'
L20	N74°23'16"W	64.66'
L21	N78°16'47"W	82.04'
L22	N87°04'05"W	60.55'
L23	N62°58'38"W	68.18'
L24	N77°32'32"W	78.46'
L25	N84°43'27"W	66.76'
L32	N71°15'15"W	71.29'
L33	N41°19'05"W	37.59'
L34	S87°12'47"W	67.86'
L35	S36°13'24"W	58.78'
L36	S71°56'21"W	35.00'
L37	S50°27'51"W	39.93'
L38	S02°07'04"E	37.44'
L39	S89°31'30"W	64.11'
L40	S40°06'55"W	22.18'
L41	S21°36'45"W	65.54'
L42	S30°09'12"W	66.57'
L43	S11°32'12"W	47.12'
L44 B	S44°58'36"W	28.03'



REVISION #2 04-27-2023 UPDATE OWNERSHIP J & K
 REVISION #1 12-20-2022 ADD TIE TO BENT #6 REBAR

© 2021, ESP ASSOCIATES, INC. ALL RIGHTS RESERVED. COPIES OF THE ORIGINAL OF THIS DOCUMENT DISTRIBUTED BY THE SURVEYOR BEAR THE ORIGINAL SIGNATURE AND EMBOSSED SEAL OF THE SURVEYOR.



ESP Associates, Inc.
 P.O. Box 7030
 Charlotte, NC 28241
 3475 Lakemont Blvd.
 Fort Mill, SC 29708
 704-583-4949 (NC)
 803-802-2440 (SC)
 www.espassociates.com

ANNEXATION SURVEY OF:
 GALLOWAY RIDGE DEVELOPMENT
 BEING 81.039 ACRES

LOCATED IN: PAW CREEK TOWNSHIP
 MECKLENBURG COUNTY
 NORTH CAROLINA

CLIENT: MERITAGE HOMES OF THE
 CAROLINAS, INC.
 13925 BALLANTYNE CORPORATE PLACE
 SUITE 300, CHARLOTTE, NORTH CAROLINA, 28277

PROJECT NO	DM20.800
SCALE	NO SCALE
DATE	03/31/2022
DRAWN BY	TFB
CHECKED BY	RDB
DRAWING NO	1049_900_ANNEX-REV2
SHEET	4 OF 4