

## **Implementing the Charlotte Future 2040 Comprehensive Plan**

### **COMMUNITY AREA PLANNING: PUBLIC REVIEW & FEEDBACK**

## **Community Area Planning**

### **Council Priority Alignment**

◀ **Transportation and Planning**

### **Purpose**

◀ **Information only**

### **Key Takeaways**

◀ **Present received comments and staff responses on the draft Community Area Plans & Policy Map.**

# Community Area Planning (CAP)

## Previous Council Communication

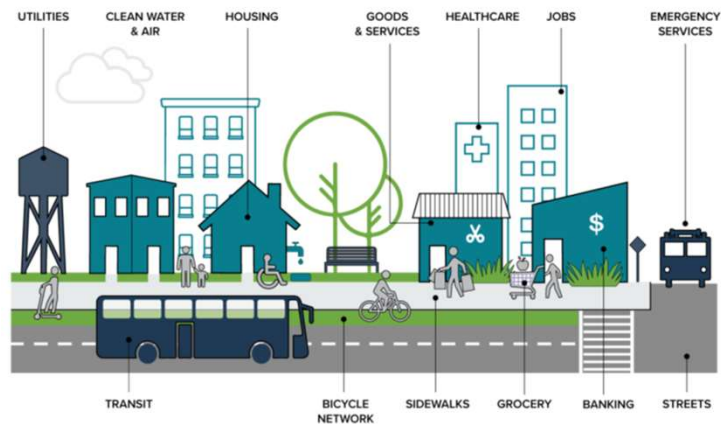
- ◀ June 2, 2025: TPD presentation
- ◀ May 12, 2025: Public hearing
- ◀ May 5, 2025: TPD presentation
- ◀ April 28, 2025: Action review/Manager's Report
- ◀ April 7, 2025: TPD presentation
- ◀ March 3, 2025: TPD presentation
- ◀ Jan. 6, 2025: TPD presentation
- ◀ Dec. 2, 2024: Action review

## Future Council Action

- ◀ June 23, 2025: Council decision

These Plans are about:  
**Creating  
Complete  
Communities**

### ELEMENTS OF A COMPLETE COMMUNITY

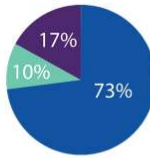


# Historical Context

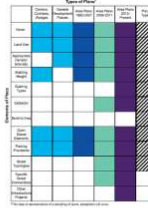


**2012 - 2015**  
CONNECT Our  
Future Regional  
Growth Framework

Percentage of Square Miles



**2015**  
Land Use Policy  
Audit



**2016 - 2018**  
Place Type  
Research & Testing



**2018 - 2021**  
Charlotte Future 2040  
Comprehensive Plan

CLTFUTURE2040.COM

CITY of CHARLOTTE

# Blueprint for Growth



**VISION**  
Policy & Plans



**LEGALLY BINDING**  
Regulations & Ordinances

<b>Zoning Ordinance</b>
<b>Subdivision</b> Chapter 20
<b>Trees</b> Chapter 21
<b>Streets &amp; Sidewalks</b> Chapter 19
<b>Post-Construction Stormwater</b> Chapter 18
<b>Floodplain Regulations</b> Chapter 9
<b>Erosion Control</b> Chapter 17
<b>Driveway/Access Regulations</b>

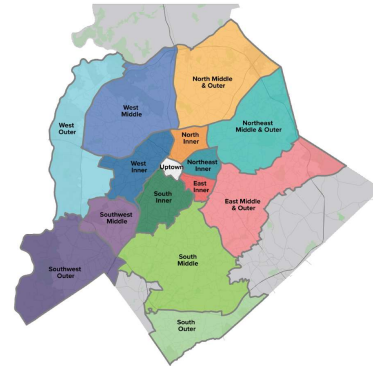
**Unified Development Ordinance**  
✓ Adopted August 2022



CLTFUTURE2040.COM

CITY of CHARLOTTE

# CAP Process + Outcomes



- CAP Program Guide
- 14 Community Area Plans
- Refined 2040 Policy Map

CLTFUTURE2040.COM

CITY of CHARLOTTE

# Value & Impact



2008 – 2015 area plans =  
**27% City coverage**  
*verse*

Community Area Plans =  
**100% City coverage +  
FOUNDATIONAL**

Criteria for change in  
**NEIGHBORHOODS**

Clearer direction for  
**rezonings**

(Helps align decisions with our  
equitable + smart growth  
strategy)

Memorialize  
Strategic Investment  
Area potential projects

Identify **NEEDS** for  
mobility, open space,  
placemaking projects:

- Prioritization of programmatic \$
  - Development proposals
  - Neighborhood advocacy

Where + how to reduce  
**environmental**  
**impacts** (such as heat  
impacts)

CLTFUTURE2040.COM

CITY of CHARLOTTE

## Engagement Summary (Phase 1 – 5)



**491,000+**

**People reached**

(all interactions, including online and social media reach)

**6,490+**

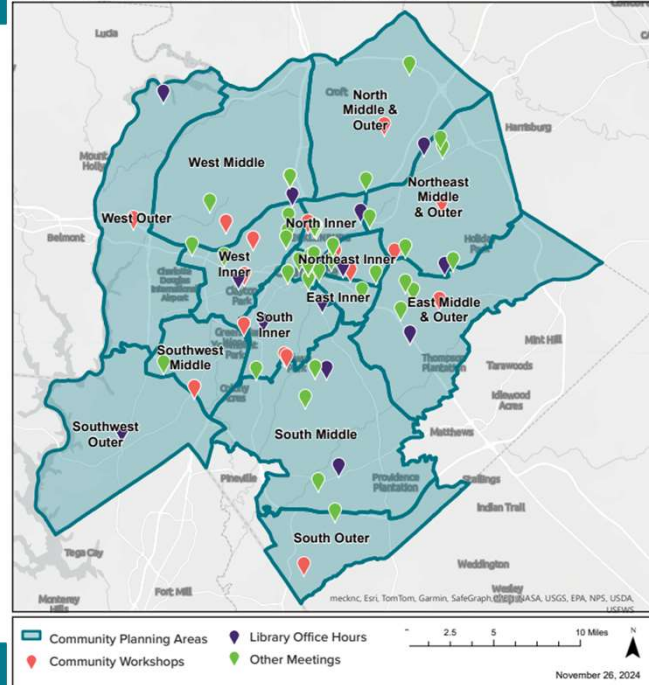
**In-person interactions**

**2,520**

**Comments received**

CLTFUTURE2040.COM

MAP 1: COMMUNITY ENGAGEMENT MAP



## Phase 5 Engagement Efforts *(to date)*

### NOTIFICATIONS

- Digital ad (GOV Channel, YouTube Livestreams, CMGC Display Boards)
- Press release to media outlets (32 outlets)
- Informational email to Council
- Email blast to distribution list (4,197 recipients)
- Social media posts (12,948 CPDD & 6,243 City impressions)
- Website updates (City & Project)
- Media interviews (WCNC, WBTV, WSOC)
- Newsletters (City Speaks, CROWN Weekly)

CLTFUTURE2040.COM

### ENGAGEMENT OPTIONS

**1**

#### Virtual Open House:

- Highlights of process
- Key takeaways
- Link to plans

**2**

#### Draft Plans:

- Available at [cltfuture2040.com](http://cltfuture2040.com)
- Read plans
- Share feedback

**3**

#### Office Hours:

- Speak to staff
- Tuesdays, 11 am – 1 pm
- Thursdays, 3 – 5 pm

**4**

#### Libraries:

- Hardcopies available

**5**

#### MAY 15<sup>th</sup> WEBINAR

 CITY of CHARLOTTE

## Your Voice, Your Community: Join the Conversation

*What does a Community Area Plan mean for YOU and your community?*



Join us for an interactive webinar where residents can speak with staff and get answers about how their individual Community Area Plan will impact daily life.

 **May 15<sup>th</sup>**  **Live Online**

 **5 pm – 6 pm: West & North Plans = 57 Participants**

**6 pm – 7 pm: East & South Plans = 47 Participants**

**104 Participants**

CLTFUTURE2040.COM

 CITY of CHARLOTTE

## Phase 5 Comments

*Overview*

Total Comments	Type of Comment
<b>822</b>	<b>60 (7%) Support</b>
	<b>269 (33%) Suggestions</b>
	<b>170 (20%) Questions</b>
	<b>323 (40%) Concerns</b>

**Majority of feedback is collaborative**

Feedback received on:

- All plan chapters
- All plan geographies

CLTFUTURE2040.COM

 CITY of CHARLOTTE

## Phase 5 Comments

### SUPPORT



"Duplexes and quadraplexes are common housing types in Dilworth and Sedgefield that should be built more frequently. Support!"

*In reference to the Placemaking Aspirations:*  
 "This is a great idea – especially for the Transforming Nations Ford service area, which is incredibly diverse racially, culturally, and generationally."

"This vision of a pedestrian-oriented, medium-density development within a five-minute bike ride from my house is one of the most exciting things I can recall ever seeing in a planning document."

"The West Middle CAP is an impressive document and great guide for future development. Thank you all for prioritizing our wellbeing and your hard work."

CLTFUTURE2040.COM

 CITY of CHARLOTTE

## Phase 5 Comments

### SUGGESTIONS



*~35% of suggestions resulted in edits or additions to the draft plans.  
 Edits fall into four categories:*

**NEW  
CONTENT /  
POLICIES**

**CLARITY**

**QUALITY**

**NEXT  
STEPS**

CLTFUTURE2040.COM

 CITY of CHARLOTTE



## Phase 5 Comments

### SUGGESTIONS & EDITS



#### NEW CONTENT / POLICIES

**Add Details about Specific Plans (SP)** – Identify the types of available plans and establish prioritization criteria for each type in the Program Guide.

**Add Environmental Justice Action Plans (EJAPs) to the SP Toolbox** – To support the implementation of the CAP Environmental Justice policies and further mitigate impacts.

**Add an Extraterritorial Jurisdiction (ETJ) Policy** – “To ensure delivery of adequate public services, consider utility capacity (water, sewer, and solid waste), road maintenance, emergency services, and evacuation routes when evaluating entitlements through city-led or privately initiated rezonings.”

**Revise Environmental Justice Policy EJ-7** – To encourage both the co-location of cooling amenities at mobility hubs and the integration of smart surfaces as mitigation tools in areas impacted by urban heat.

CLTFUTURE2040.COM

 CITY of CHARLOTTE

## Phase 5 Comments

### SUGGESTIONS & EDITS



#### CLARITY

**Enhance the 2040 Policy Map Spread** – To clarify where change is anticipated circle “Areas of Change” on the Policy Map and include Place Type descriptions adjacent to map to support interpretation.

**Add a New Spread on CAP Assessment Tables** – To illustrate how the tables will guide future public and private investments in each community.

**Develop a Funding Program Matrix for Specific Mobility Projects** – To clarify that city mobility programs will help address infrastructure needs, identify eligible program funds for specific mobility requests.

**Add Index, Glossary, and Omitted Methodology to Appendix** – To enhance navigation and understanding.

CLTFUTURE2040.COM

 CITY of CHARLOTTE



## Phase 5 Comments

### *SUGGESTIONS & EDITS*



#### QUALITY

**Amend Maps to Improve Legibility** – Increase legibility by adding neighborhood names, the ETJ boundary, the Catawba River, additional street names, etc.

**Enlarge Implementation Disclaimers** – Emphasize the Implementation Guide is not adopted; Enlarge disclaimer for Illustrative Concepts and add explanatory language about the intent of the Existing and Future Place Type maps.

**Correct Scrivener's Errors** – Improve accuracy by correcting labels, spelling errors, and mismatched image or maps.

CLTFUTURE2040.COM

 CITY of CHARLOTTE

## Phase 5 Comments

### *SUGGESTIONS & EDITS*



#### NEXT STEPS

**Develop an Implementation Roadshow** – To help all users (community members, developers, city staff, and officials) understand how the CAP policies are to be interpreted and applied to decision-making.

**Update Rezoning Staff Analysis** – To integrate CAP policies and ensure requests are consistently evaluated in line with Charlottes equitable and smart growth strategy.

**Share Requests for Specific Projects with Interdepartmental Partners** – To be included in their databases for future prioritization.

CLTFUTURE2040.COM

 CITY of CHARLOTTE

## Phase 5 Comments

### QUESTIONS & CONCERNS



*Questions and Concerns fall into four categories:*

**FUTURE  
GROWTH**

**INFRA-  
STRUCTURE**

**TRADE-  
OFFS**

**TECHNICAL**

CLTFUTURE2040.COM

 CITY of CHARLOTTE

## Phase 5 Comments

### QUESTIONS & CONCERNS: FUTURE GROWTH



#### 1) Concerns about Growth:

Opposition to overall pace/scale of growth in the City

- Growth will continue
- CAPs help manage growth by:
  - Aligning development with infrastructure capacity
  - Respecting neighborhoods
  - Creating walkable, mixed-use centers
- Without CAPs, 73% of the city lacks community-level guidance for directing growth

#### 2) Disagreement with Growth Strategy:

Conflicting feedback on current approach

- More density vs. less density
- Current Policy Map designations can accommodate projected growth
- Policy PT-3 (Map Amendment Criteria) provides consistent considerations for evaluating map changes overtime
- Policy PT-5 provides criteria for change in neighborhoods

CLTFUTURE2040.COM

 CITY of CHARLOTTE

## Phase 5 Comments

### QUESTIONS & CONCERNS: INFRASTRUCTURE



#### 3) Request for Additional or Specific Infrastructure: Emphasis on the need for more mobility projects, parks, greenways

- CAP memorializes the Strategic Investment Area (SIA) approach to align mobility policies + projects
- CAP Assessment Tables identify infrastructure needs to guide future private and public investments
- Neighborhood Toolkit outlines existing resources
- Requests for specific projects will be shared with interdepartmental partners for inclusion in future prioritization efforts

#### 4) Impact on City Services: Concerns about the ability to maintain quality city services with growth

- Policy PFS-1 calls for a formalized and unified system for developing and sharing growth forecasts, so all service providers have access to consistent growth data.

CLTFUTURE2040.COM

CITY of CHARLOTTE

## Phase 5 Comments

### QUESTIONS & CONCERNS: TRADE-OFFS



#### 5) Balancing Tree Canopy and Development: Concerns about preserving tree canopy amid ongoing development

- CAPs can't stop development
- 2040 goal for a healthy environment linked to UDO tree regulations
- Ongoing monitoring + adjustments (Tree Canopy Action Plan 2.0)

#### 6) Environmental Justice Impacts: Continued concern about neighborhoods adjacent to manufacturing


- Discussed with community during Policy Map and CAP development
- CAP EJ policies aim to ensure the condition isn't repeated in the future
- EJ Action Plan will focus on smaller geographies and implementation projects

#### 7) Level of Detail in the Plans: Request for more neighborhood-specific details

- 2008 – 2015 Plans = 27% coverage, CAPs = 100% coverage
- CAPs offer appropriate details based on 2040 Plan, Policy Map, SMP, UDO
- Specific Plans will address unique issues in smaller geographies

CLTFUTURE2040.COM


CITY of CHARLOTTE




## Phase 5 Comments

### QUESTIONS & CONCERNS: TECHNICAL


<p><b>8) Need for Policy Clarification:</b> Questions regarding Place Types, Strategic Mobility Plan, Strategic Investment Areas, Streets Map, Assessment Tables</p> <ul style="list-style-type: none"> <li>Answer questions</li> <li>Cross-references to related plan sections when appropriate</li> <li>Will make “clarifying” revision to improve interpretation:               <ul style="list-style-type: none"> <li>Enhance 2040 Policy Map spread</li> <li>Add new spread on CAP Assessment Tables</li> <li>Add index and glossary</li> </ul> </li> </ul>	<p><b>9) Data and Methodological Questions:</b> Inquiries regarding data sources, analysis methods, and interpretation</p> <ul style="list-style-type: none"> <li>Reference data sources and methodologies in Appendix</li> <li>Answer questions about interpretation</li> </ul>	<p><b>10) Implementation and Accountability:</b> Skepticism about whether plans will be effectively implemented</p> <ul style="list-style-type: none"> <li>CAP Implementation Roadshow</li> <li>Update rezoning staff analysis</li> </ul>
--	--	---

CLTFUTURE2040.COM
 CITY of CHARLOTTE



## Value & Impact

<p>2008 – 2015 area plans = <b>27% City coverage</b> <i>verse</i> Community Area Plans = <b>100% City coverage + FOUNDATIONAL</b></p>	<p>Criteria for change in <b>NEIGHBORHOODS</b></p>	<p>Clearer direction for <b><u>rezonings</u></b> (Helps align decisions with our <u>equitable + smart growth strategy</u>)</p>
<p>Memorialize <u>Strategic Investment Area</u> potential projects</p>	<p>Identify <b>NEEDS</b> for mobility, open space, placemaking projects:</p> <ul style="list-style-type: none"> <li>Prioritization of programmatic \$           <ul style="list-style-type: none"> <li>Development proposals</li> <li>Neighborhood advocacy</li> </ul> </li> </ul>	<p>Where + how to reduce <b>environmental impacts</b> (such as heat impacts)</p>

CLTFUTURE2040.COM
 CITY of CHARLOTTE



## Next Steps

### ◁ **June: Planning Committee Referral & Council Decision**

#### ◁ If adopted:

- CAP Implementation Roadshow (Summer – Winter 2025)
- Update Rezoning Staff Analysis (Late Summer 2025)
- Pre-planning for specific plans (Fall 2025)
- Charlotte Future 2040 Comprehensive Plan 5-Year Assessment (2026)