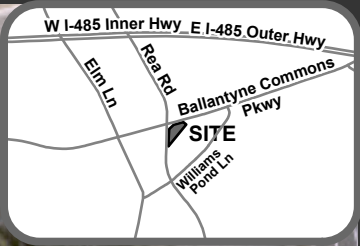
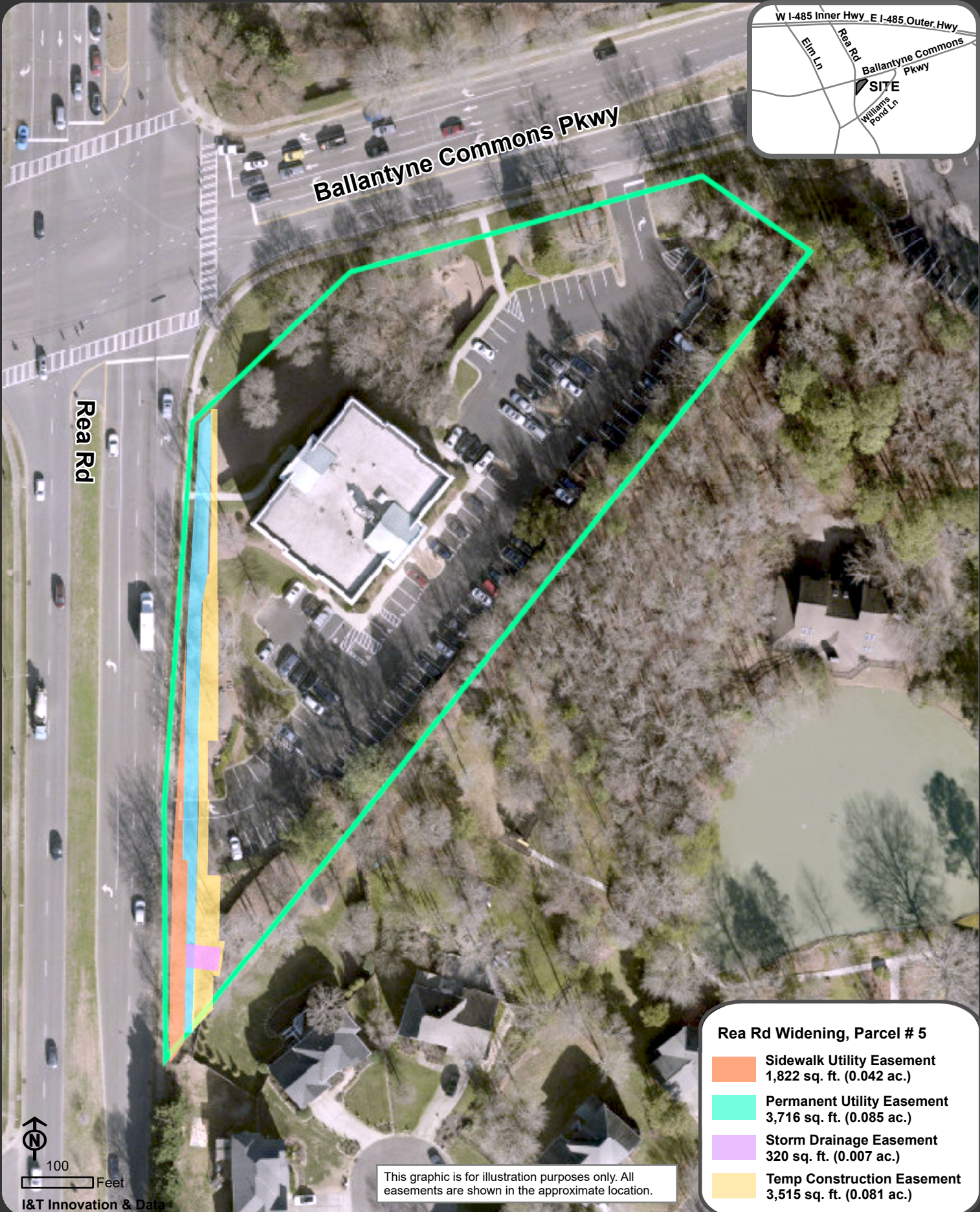






Location Map: Property Transactions - Rea Road Widening, Parcel # 5 - Council District 7



Rea Rd Widening, Parcel # 5	
	Sidewalk Utility Easement 1,822 sq. ft. (0.042 ac.)
	Permanent Utility Easement 3,716 sq. ft. (0.085 ac.)
	Storm Drainage Easement 320 sq. ft. (0.007 ac.)
	Temp Construction Easement 3,515 sq. ft. (0.081 ac.)

This graphic is for illustration purposes only. All easements are shown in the approximate location.

100 Feet
I&T Innovation & Data