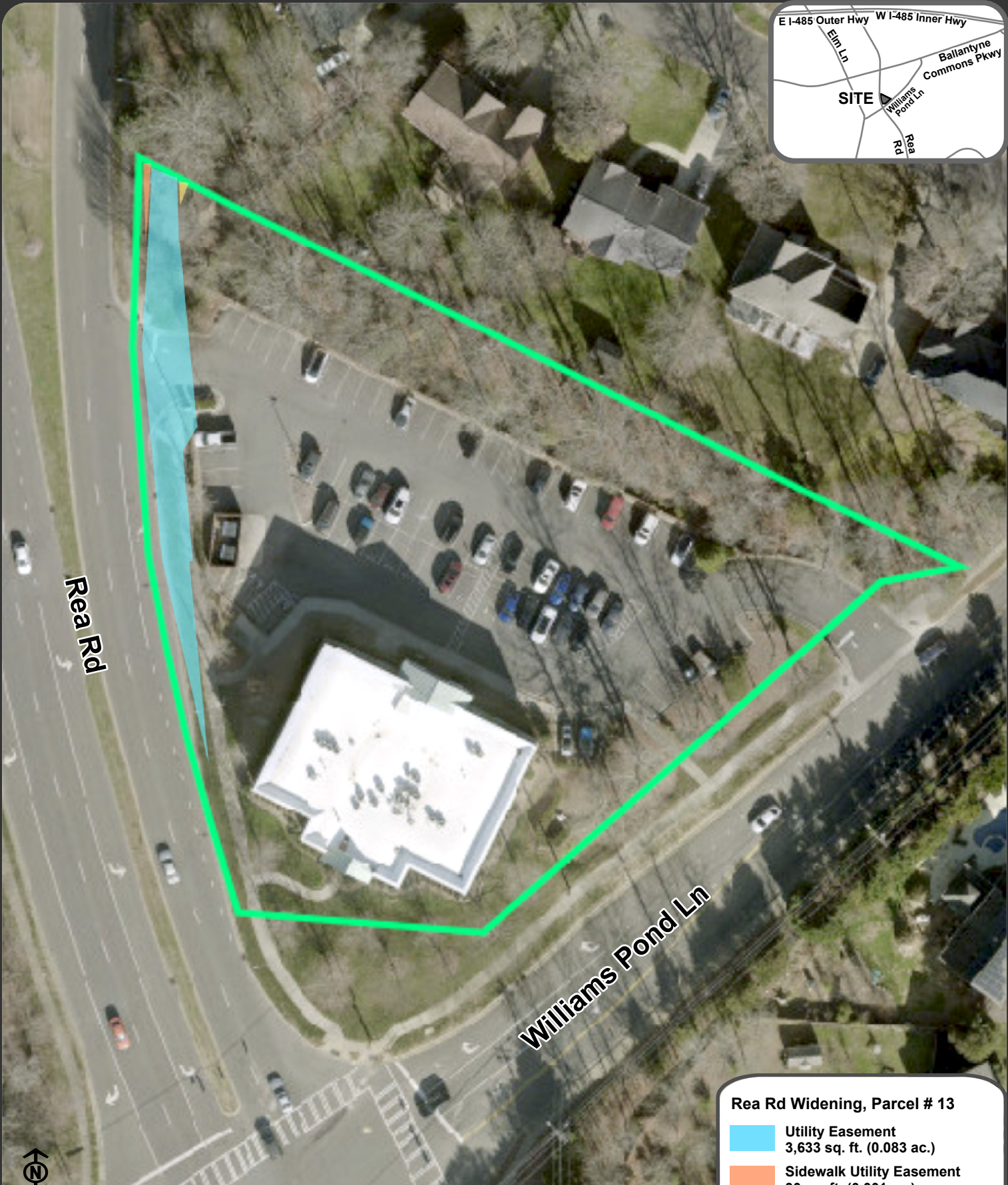





Location Map: Property Transactions - Rea Road Widening, Parcel # 13 - Council District 7



Rea Rd

Williams Pond Ln

Rea Rd Widening, Parcel # 13

-  Utility Easement
3,633 sq. ft. (0.083 ac.)
-  Sidewalk Utility Easement
30 sq. ft. (0.001 ac.)
-  Temp Construction Easement
23 sq. ft. (0.001 ac.)

This graphic is for illustration purposes only. All easements are shown in the approximate location.



100 Feet
I&T Innovation & Data