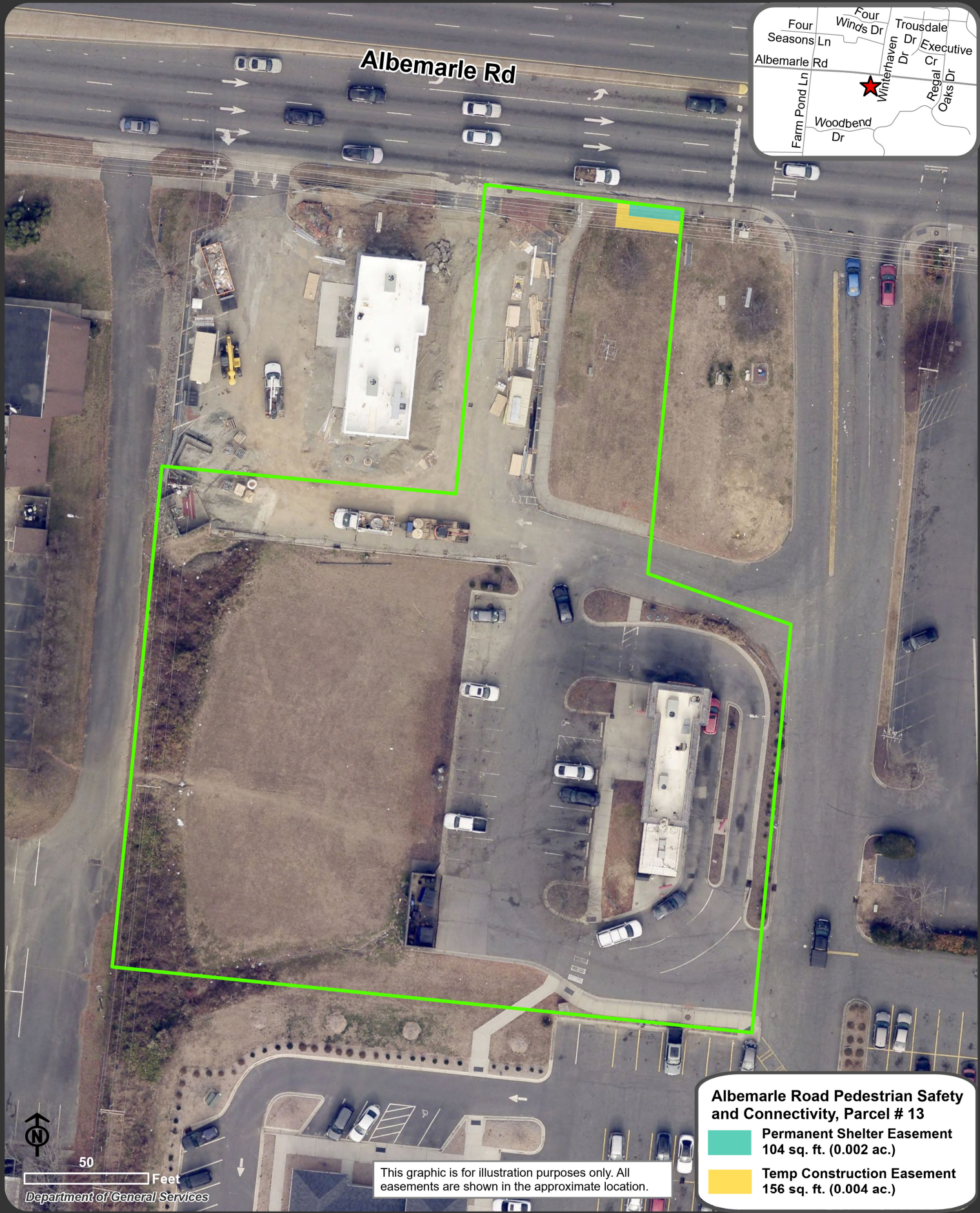
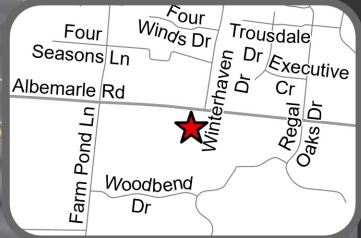


Location Map: Property Transactions - Albemarle Road Pedestrian Safety and Connectivity, Parcel # 13 - Council District 5





Albemarle Rd



50 Feet
Department of General Services

This graphic is for illustration purposes only. All easements are shown in the approximate location.

Albemarle Road Pedestrian Safety and Connectivity, Parcel # 13
 Permanent Shelter Easement
104 sq. ft. (0.002 ac.)
 Temp Construction Easement
156 sq. ft. (0.004 ac.)