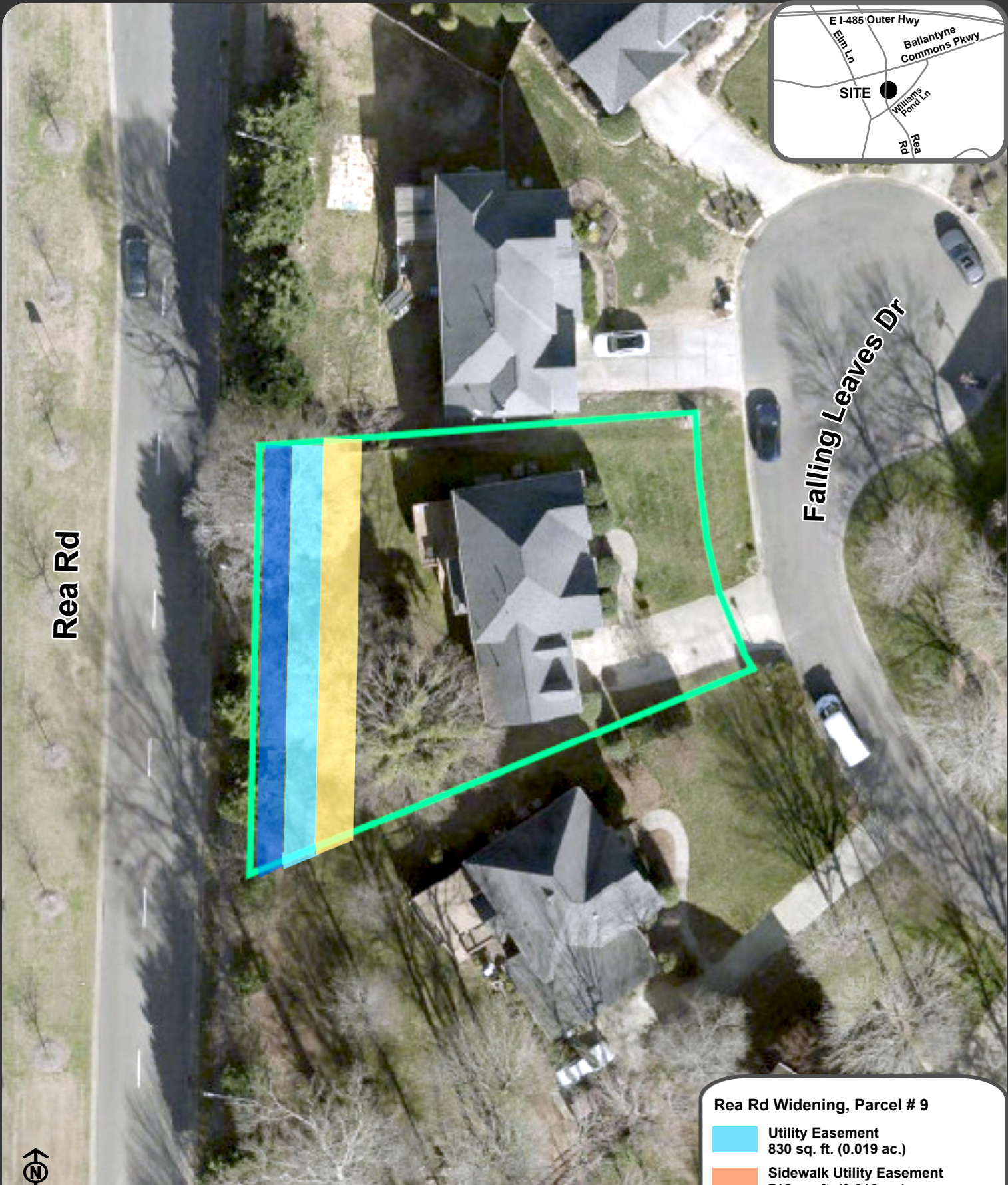


Location Map: Property Transactions - Rea Road Widening, Parcel # 9 - Council District 7



Rea Rd

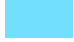


Falling Leaves Dr



I&T Innovation & Data

This graphic is for illustration purposes only. All easements are shown in the approximate location.

Rea Rd Widening, Parcel # 9

-  Utility Easement
830 sq. ft. (0.019 ac.)
-  Sidewalk Utility Easement
712 sq. ft. (0.016 ac.)
-  Temp Construction Easement
1,072 sq. ft. (0.025 ac.)