



# Referral: Community Safety Framework – Youth Crime

HOUSING, SAFETY & COMMUNITY COMMITTEE

FEBRUARY 5, 2024

1

## Agenda

- ◀ Referral Summary
- ◀ Where we've been
- ◀ Overview of City programs supporting youth
- ◀ Introduction to Mecklenburg County Community Violence Strategic Plan
- ◀ Committee discussion and next steps

2

## Referral Summary

### ◀ Policy Question

- What strategies and/or policies need to be enhanced or implemented to fully leverage the community's data, stakeholders, and service providers to promote collaboration towards a unified approach to reducing juvenile crime with a focus on both prevention measures as well as targeted strategies focused on repeat offenders?

### ◀ Committee Charge

- Review the current Safe Communities strategies, goals and progress, and partnerships related to juvenile crime.
- Review juvenile and repeat offender crime statistics and current community-wide programming/interventions.
- Benchmark national best practices with a focus on prevention, diversion and intervention.
- Leverage collaboration with applicable stakeholders.
- Make any applicable policy recommendations to Council for consideration.

## Where We've Been

### ◀ Violence as a Public Health Issue

- City of Charlotte and Mecklenburg County endorse interdisciplinary public health approach to violence prevention
- What it means: Identifying the root causes of the violence epidemic and using data, tools, and evidence-informed best practices to address those causes

### ◀ Community Violence Dashboard

- Violence Prevention Data Collaborative

### ◀ Safe Charlotte Grants

- Grants focused on housing stability, workforce development, mental health and youth services

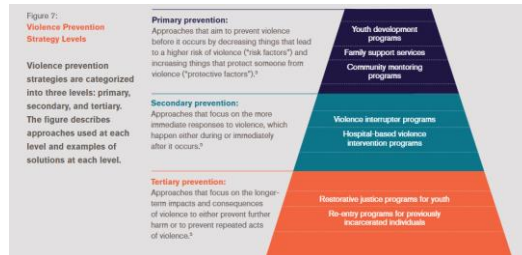
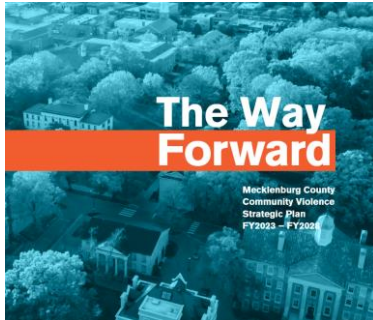
### ◀ Violence Interruption / Alternatives to Violence

- Focus on youth ages 14-25 at-risk of perpetrating or becoming a victim of a violent incident
- Beatties Ford, West Blvd./Remount, Nations Ford/Arrowood

### ◀ Hospital Based Violence Intervention



# The Way Forward



## Support for Youth & Families



Youth and families impacted by violence and those at higher risk of violence involvement will have easy access to services that address physical and mental health needs to enhance their ability to foster healthy relationships and ensure the healthy development of both child and caregiver.

## City Programs Supporting Youth

Youth Diversion Program	Conflict Resolution & Peer Mediation	Alternatives to Violence	Job & Career Readiness Training
Mayor's Youth Employment Program	SAFE Charlotte Grants	REACH Academy	REACH OUT
Envision Academy	Right Moves for Youth & Police Activities League	TEAM Mentoring	Child Development – Community Policing

## Next Steps

### ◀ Upcoming Housing, Safety & Community Committee

- Review current data, strategies and metrics
- Community-wide programs and interventions
- Best practices and benchmarks

### ◀ Community Engagement

- Youth engagement
- Stakeholder discussions
- Community input

### ◀ Policy Recommendations