



# CHARLOTTE FUTURE 2040 COMMUNITY AREA PLANNING

## Implementing the Charlotte Future 2040 Comprehensive Plan

CHARLOTTE CITY COUNCIL  
SEPTEMBER 9, 2024



VISION  
AND  
GOALS



IMPLEMENTATION  
INITIATIVES

Mapping  
Tools and  
Guidance for  
Public and  
Private  
Investment



The Vision For Our Growth



How We GROW  
LAND USE



How We CONNECT  
MOBILITY



How We BUILD  
DEVELOPMENT



# Community Area Planning (CAP)



**Purpose:** Provide **community-level guidance** for growth & development (including places, mobility, open space, capital facilities, community facilities & amenities)

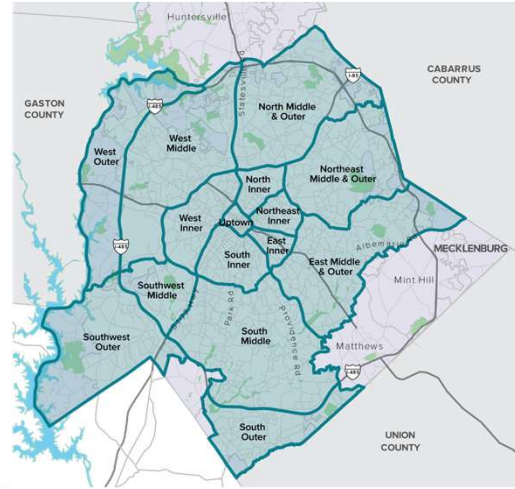
**Approach:**

- Citywide = Equitable
- Larger geographies = Efficient

**Expected Outcomes:**

- 14 Community Area Plans
  - Policy Map Refinements
  - Planned + Needed Projects/Programs
  - Illustrative Concepts
  - Implementation Strategy
- Refined 2040 Policy Map & Manual

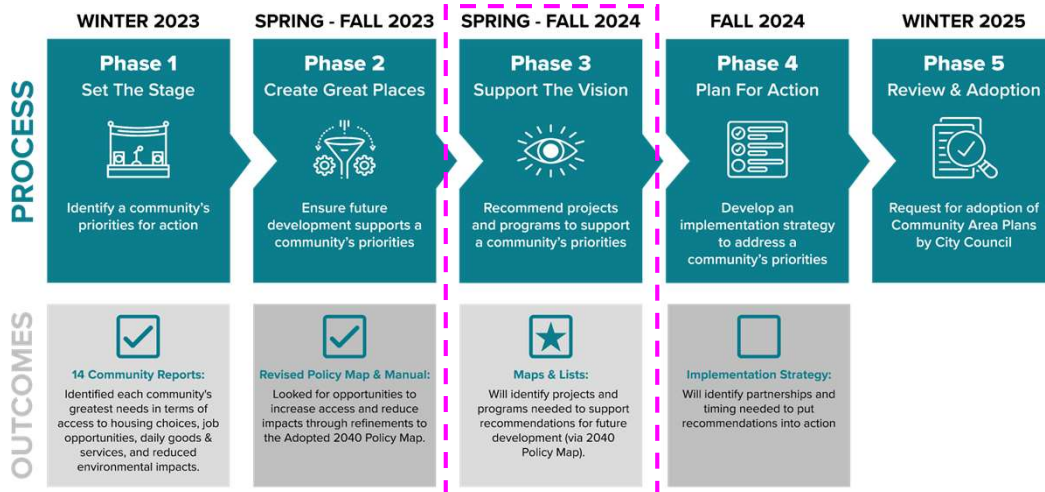
Community Area Planning Geographies



CLTFUTURE2040.COM



# Process + Plan Components




CLTFUTURE2040.COM




# Phase 2 Engagement

*Equitable & Inclusive*


**CONSTANT**




**COORDINATED**




**COLLABORATIVE**




**130,000+ Interactions**




**Workshops**  
42 Workshops  
445 Participants  
877 Comments




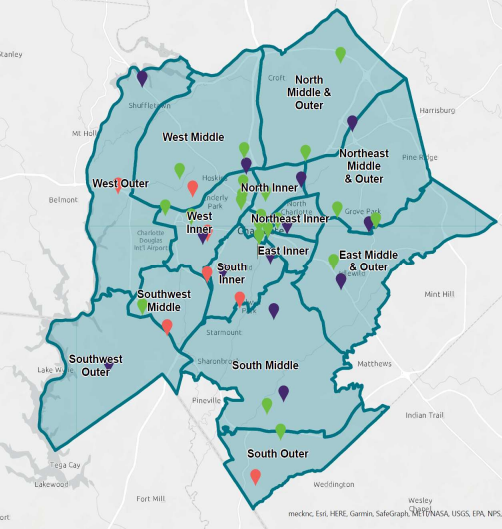
**Library Office Hours**  
1,040 Office Hours  
179 Interactions



**Other Meetings**  
33 Meetings  
1,500 Interactions



**Virtual Platforms**  
100,000+ Interactions

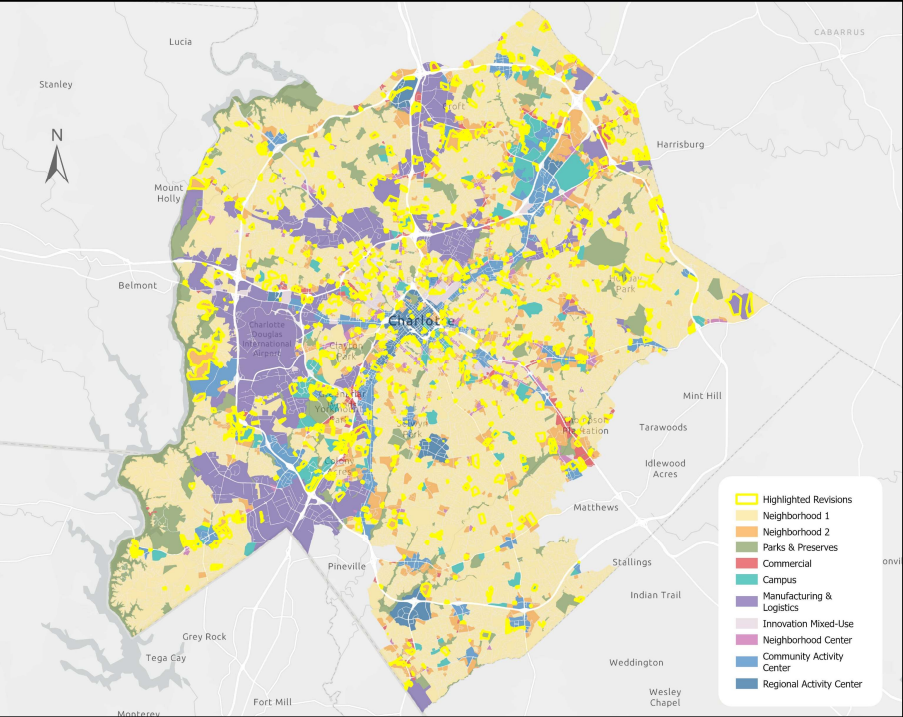
**Phase 2 Outcome:**

## Revised 2040 Policy Map

*Reflects External & Internal Engagement*

*Total Change: 6%\**

*\*Revisions highlighted in yellow*



# Policy Map Manual



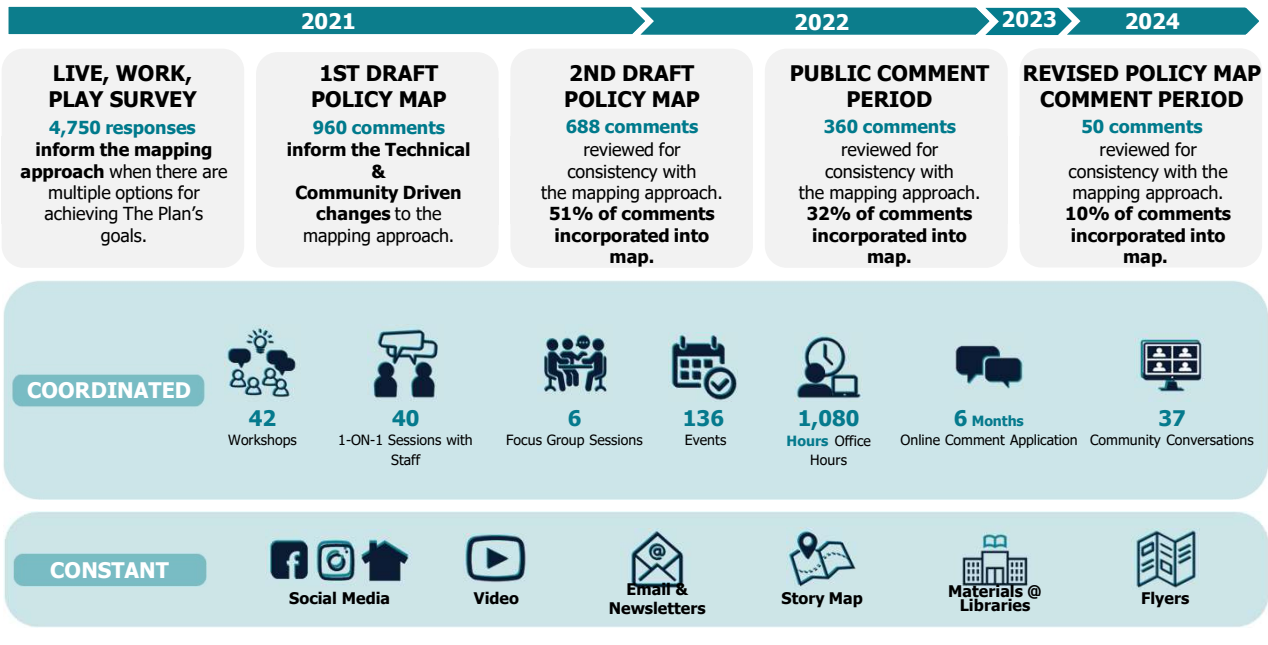
- Policy Map Overview
  - Place Types
  - Preferred Adjacencies
- Policy Map + UDO Zoning Districts
- Policy Map Updates
  1. Planning Related Updates
  2. Minor Map Amendments (*via Rezoning*s)
  3. Major Map Amendments



[clt.gov/me/cltfuture](http://clt.gov/me/cltfuture)

CITY of CHARLOTTE

## 2040 Policy Map: Multi-Year Process & Engagement





# Phase 3 Engagement

Objective: Identify projects and programs needed to support future growth



*Equitable & Inclusive*

**CONSTANT**



**COORDINATED**



**COLLABORATIVE**





**Focus Groups**

- **Partnership with UNCC**  
Department of Earth, Environmental, and Geographical Sciences
- **6 Sessions** (Approx. 50 Participants)
- **3 Study Areas**
  - Central/Albemarle
  - N. Tryon/N. Graham
  - S. Blvd/I-77 corridor
- **Themes:**
  - Safety
  - Housing
  - Transit
  - Connectivity
  - Gentrification



**Workshops**

- 4 Cardinal Geographies
- **8 Total Workshops**
- **Virtual Workshops**  
(Tuesdays 11:00 a.m. – 12:30 p.m.)
- **In-Person Workshops**  
(Thursdays 5:00 p.m. – 7:00 p.m.)
- Workshops are **drop-in format** with **no formal presentation.**
  - Introductory Video
  - 5 Stations: Planned Projects
  - Passport (Questionnaire)



**Webtool**

- Recreates in-person workshop experience online
- **Offers 24/7 opportunity to engage**
- Active from **Sept. 3 – Nov. 15**
- Includes
  - Introductory Video
  - 5 Stations: Planned Projects
  - Embedded Surveys

# Phase 3 Workshops





WEST	NORTH	EAST	SOUTH
<p><b>VIRTUAL</b> Tuesday, Sep 3 11:00am - 12:30pm</p> <p><b>IN-PERSON</b> Thursday, Sep 5 5:00pm - 7:00pm</p> <p><small>Ophelia Garmon Brown Community Center 2647 Freedom Drive</small></p>	<p><b>VIRTUAL</b> Tuesday, Sep 24 11:00am - 12:30pm</p> <p><b>IN-PERSON</b> Thursday, Sep 26 5:00pm - 7:00pm</p> <p><small>Oasis Shriners 604 Doug Mayes Place</small></p>	<p><b>VIRTUAL</b> Tuesday, Oct 15 11:00am - 12:30pm</p> <p><b>IN-PERSON</b> Thursday, Oct 17 5:00pm - 7:00pm</p> <p><small>Aldersgate 3800 Shamrock Drive</small></p>	<p><b>VIRTUAL</b> Tuesday, Nov 12 11:00am - 12:30pm</p> <p><b>IN-PERSON</b> Thursday, Nov 14 5:00pm - 7:00pm</p> <p><small>Queens University Sports Complex &amp; Conference Center 2229 Tyvola Rd.</small></p>



**FALL 2024 WORKSHOP SIGN UP**



**Welcome Video:** CAP Overview & Workshop Objective



**Mobility**

- CATS
- CDOT
- CRTPO



**Sustainability & Open Space**

- Meck. Co. Manager's Office
- Meck. Co. Park & Rec
- Office of Sustainability
- Tree Canopy Preservation



**Public Services**

- Fire Dept.
- Char-Meck Police
- General Services
- CLT Water
- City/County Stormwater



**Community Character**

- Historic Districts
- Urban Design Center
- Housing & Neighborhood Services



**Special Districts**

- Corridors of Opportunity
- Municipal Service Districts

clt.gov.me/cltfuture



# Phase 3 Workshops: Mobility



## Station Posters:

Share information about planned or potential projects.


### Charlotte Area Transit System (CATS)

The Charlotte Area Transit System is responsible for maintaining and continuously improving transit services in Charlotte.

**2024 Transit Corridor System Plan**  
The 2024 Transit Corridor System Plan is a comprehensive plan for the future of public transit in Charlotte. It outlines the vision for a modern, efficient, and sustainable transit system that meets the needs of the community.


**Transit System Plan Update**  
Over the next year, CATS is planning and implementing updates to the Transit System Plan. These updates will focus on improving service, expanding routes, and enhancing the overall transit experience.

**CATS Planned Projects & Services: West**



**EVISION MY RIDE: BUS FREQUENCY STUDY**  
The EVISION My Ride Bus Frequency Study is a comprehensive study of bus frequencies in Charlotte. It aims to identify areas where bus service is needed and to determine the most effective frequency levels.

**2050 MTP Projects**

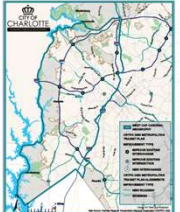


**Comprehensive Transportation Plan & Metropolitan Transportation Plan**  
The CRTPO members the Comprehensive Transportation Plan (CTP) and the Metropolitan Transportation Plan (MTP). The CTP is a long-range transportation plan that addresses the region's multimodal transportation needs over a 50-year horizon, including modes such as transit, bicycle, and pedestrian. The MTP identifies and prioritizes projects for funding and implementation to meet these needs.

### Charlotte Regional Transportation Planning Organization (CRTPO)

The Charlotte Regional Transportation Planning Organization is a federally designated Metropolitan Planning Organization (MPO) for the Charlotte Urban Area. The CRTPO is responsible for the transportation planning process, including identifying and addressing the region's transportation needs.

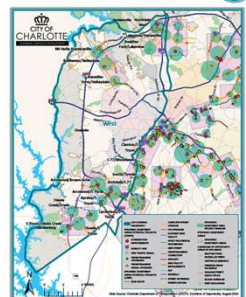
**2050 MTP Projects**



**Comprehensive Transportation Plan & Metropolitan Transportation Plan**  
The CRTPO members the Comprehensive Transportation Plan (CTP) and the Metropolitan Transportation Plan (MTP). The CTP is a long-range transportation plan that addresses the region's multimodal transportation needs over a 50-year horizon, including modes such as transit, bicycle, and pedestrian. The MTP identifies and prioritizes projects for funding and implementation to meet these needs.

### Strategic Investment Area Potential Projects

**BUNDLES OF POTENTIAL PROJECTS BY SIA**



## Passport Questions:

Seek feedback on planned or potential projects and ask about needed projects & programs to support future growth.

### MOBILITY QUESTIONS

1. You've just learned about planned mobility improvements. Are other mobility improvements needed in your community?
2. Do you think the "bundles" of potential projects are in the right places in the Strategic Investment Areas? Do you have any comments about the potential projects?

[clt.gov.me/cltfuture](http://clt.gov.me/cltfuture)



# Phase 3 Webtool: Mobility

## Landing & Intro Page: CAP Overview & Workshop Objective

**Supporting the Vision**

The third phase of Community Area Planning focuses on the projects and programs needed to support the vision for future places.

The following information was shared at the 2024 workshops.



**Get started**

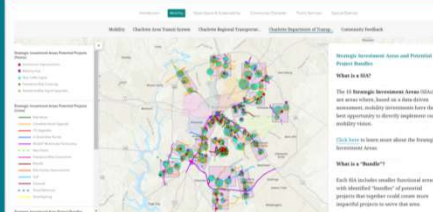
To participate in this phase and share your voice click Get Started.



**SUPPORTING THE VISION STORYMAP**

[clt.gov.me/cltfuture](http://clt.gov.me/cltfuture)

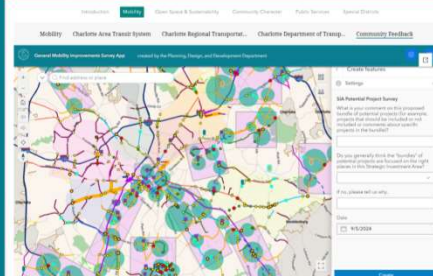
## Dynamic Maps: Share information about planned or potential projects.



**What is a SIA?**  
The 11 Strategic Investment Areas (SIAs) are areas within the city that have diverse economic, mobility, and environmental characteristics. Each SIA is a key opportunity to identify and implement mobility projects.

**What is a "Bundle"?**  
Each SIA includes smaller "bundles" of potential projects that together could create more impactful programs to serve the area.

## Embedded Survey: Seek feedback on planned/potential projects and ask about needed projects & programs.



**General Mobility Improvement Survey Form**

What is your comment on the "bundles" of potential projects in the Strategic Investment Areas?

Do you generally think the "bundles" of potential projects are in the right places in the Strategic Investment Areas?

If you checked "No" or "Only":

Why?

Other:



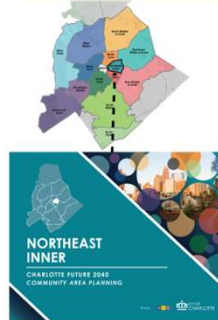
# Next Steps

- Plan Development
- Draft Plans (Feb. '25)
- Review & Adoption:
  - 1 Guide & Policy Map Manual
  - 14 Plans
  - Revised Policy Map

## 1 Guide



## 14 Plans



### Plan Contents



CLTFUTURE2040.COM

CITY of CHARLOTTE

# Questions?

## VISIT OUR WEBSITE

CLTFUTURE2040.COM

## FOLLOW US

@cltplanning



FALL 2024 WORKSHOP SIGN UP



SUPPORTING THE VISION STORYMAP

