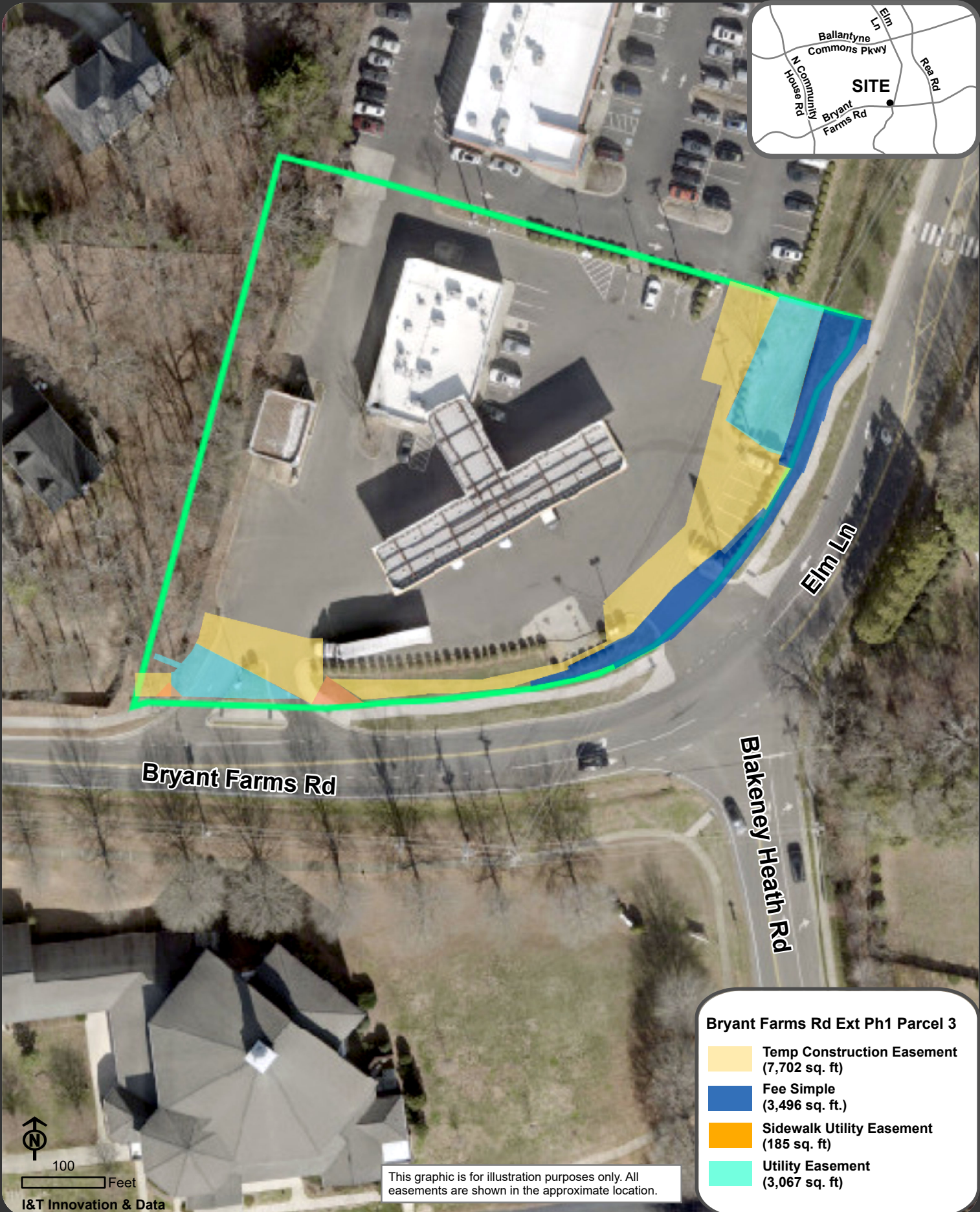
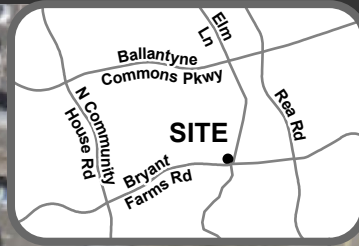


Location Map: Property Transactions - Bryant Farms Rd Extension, Phase 1, Parcel # 3 - Council District 7



Bryant Farms Rd Ext Ph1 Parcel 3

- Temp Construction Easement (7,702 sq. ft)
- Fee Simple (3,496 sq. ft.)
- Sidewalk Utility Easement (185 sq. ft)
- Utility Easement (3,067 sq. ft)

This graphic is for illustration purposes only. All easements are shown in the approximate location.

