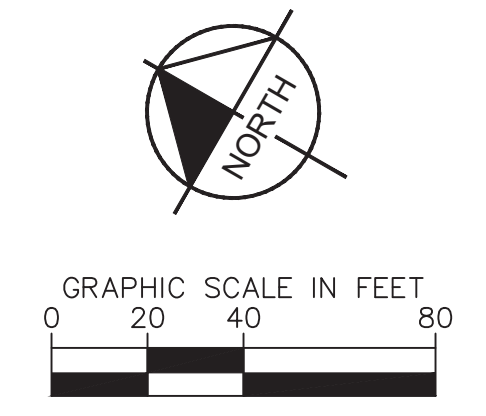
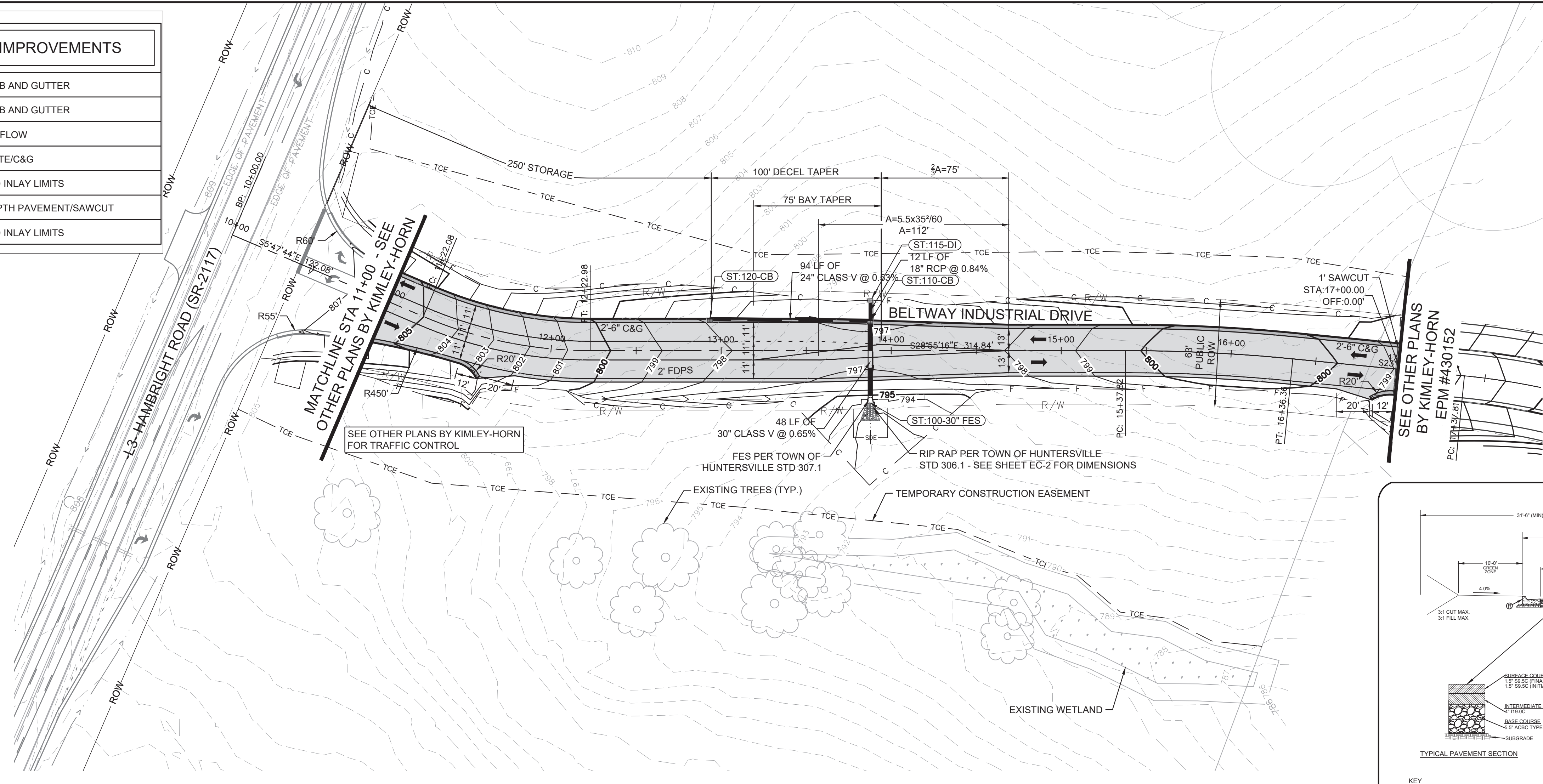
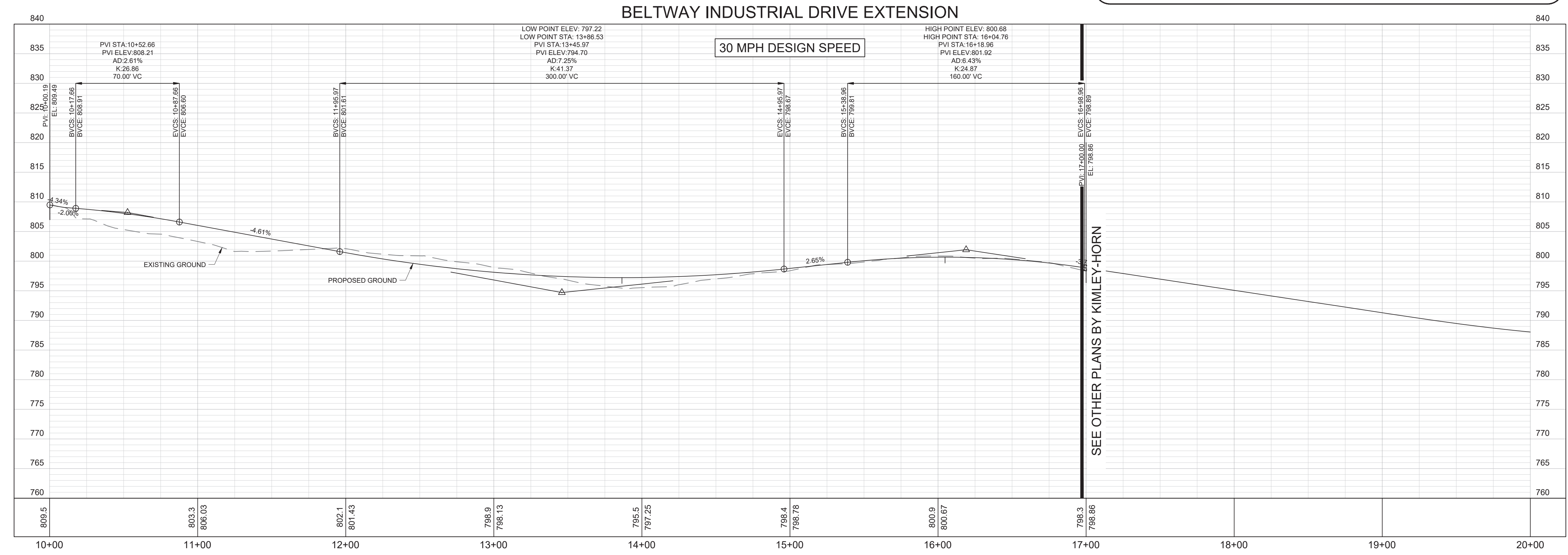
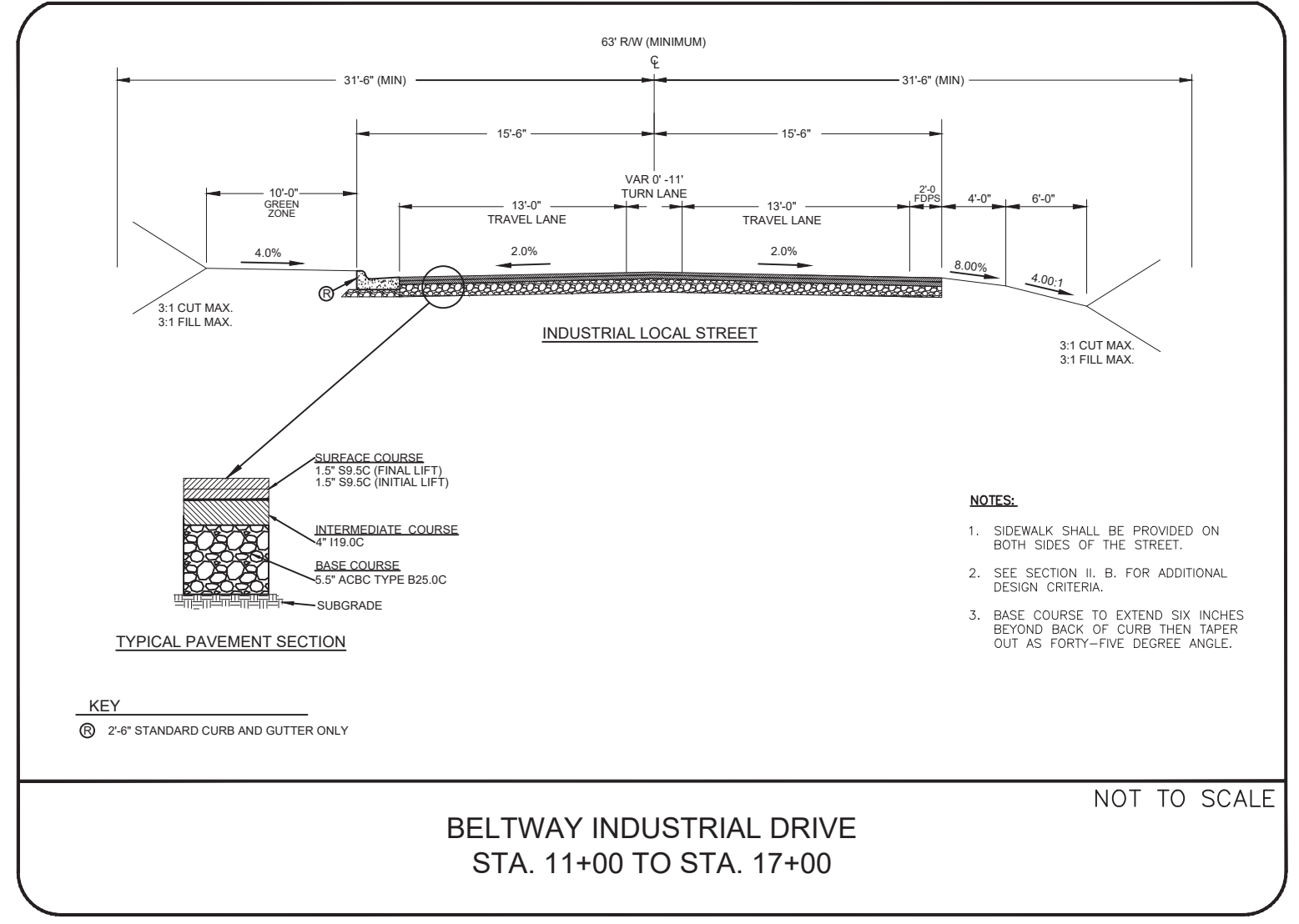


This document, together with the concepts and designs presented herein, is intended only for the specific purpose and client for which it was prepared. Reuse of and improper reliance on this document without written authorization and adaptation by Kimley-Horn and Associates, Inc. shall be without liability to Kimley-Horn and Associates, Inc.

LEGEND FOR PROPOSED IMPROVEMENTS	
	PROPOSED 1'-6" CURB AND GUTTER
	PROPOSED 2'-6" CURB AND GUTTER
	PROPOSED TRAFFIC FLOW
	PROPOSED CONCRETE/C&G
	PROPOSED MILL AND INLAY LIMITS
	PROPOSED FULL DEPTH PAVEMENT/SAWCUT
	PROPOSED MILL AND INLAY LIMITS



NOTE: SIDEWALK, STREET TREES, DETENTION AND WATER QUALITY WILL BE ADDRESSED AS PART OF THE CATS FACILITY PROJECT.



NO.	REVISIONS	DATE	BY

Kimley-Horn

© 2023 KIMLEY-HORN AND ASSOCIATES, INC.
 200 SOUTH TRYON STREET, SUITE 200, CHARLOTTE, NC 28202
 PHONE: 704-333-5131
 WWW.KIMLEY-HORN.COM



KHA PROJECT 118654012	DATE APRIL 2023	SCALE AS SHOWN	DRAWN BY JAR	CHECKED BY JMR
--------------------------	--------------------	-------------------	-----------------	-------------------

PLAN AND PROFILE

BELTWAY INDUSTRIAL DRIVE EXTENSION
 PREPARED FOR
 DEVELOPMENT AND CONSTRUCTION INSIGHTS, LLC
 TOWN OF HUNTERSVILLE, NC