

## EXHIBIT 1

### Designation Report on the E. L. Baxter Davidson Historic Markers and Monuments

#### *Williams Memorial Presbyterian Church Wall and Marker Charlotte, N.C.*



*West face of Williams Memorial Presbyterian Church Wall*



*West face of Williams Memorial Presbyterian Church Marker*

1. Name and Location of the Property. The Williams Memorial Presbyterian Church Wall and Marker are located at 4700 Beatties Ford Road, within Charlotte's sphere of influence. The tax parcel number for the property on which the structures are located is 04117101, and the UTM Coordinates are 17S 513132E 3906225N.
2. Name and Address of Parties to be Notified.
  - a. North Carolina Department of Transportation  
Division 10, District 2 Office  
7605 District Drive  
Charlotte, N.C. 28213  
District Engineer: Wendy Taylor; (980) 523-0000; wataylor1@ncdot.gov
  - b. Williams Memorial Presbyterian Church  
4700 Beatties Ford Road  
Charlotte, N.C. 28216  
(704) 392 8816; wmpcsecretary1885@yahoo.com

3. Ad Valorem Tax Appraisal. As of January 2021, the total appraised value of the property on which the Williams Memorial Presbyterian Church Wall and Marker stand is \$1,259,400. The property is currently exempt from the payment of property taxes.
4. Recommendation for Designation. The Williams Memorial Presbyterian Church Wall in its entirety, as well as a twenty (20) foot wide strip of land abutting each side of the wall, running for the entire length of each segment of the wall, is recommended for historic landmark designation. The recommended distance is measured in each direction from the external face of each segment of the wall and from the external face of the stone piers located at each wall segment's termination points. The Williams Memorial Presbyterian Church Marker in its entirety, as well as a twenty (20) foot radius of the land immediately surrounding the monument, measured in each direction from the central point of the monument, is also recommended for historic landmark designation.

### ***The Williams Memorial Presbyterian Church Wall and Marker***

The stone wall and marker at Williams Memorial Presbyterian Church were erected by E. L. Baxter Davidson in 1931. See Charles William Sommerville, *The History of Hopewell Presbyterian Church for 175 Years from the Assigned Date of its Organization 1762* (Huntersville, NC: Hopewell Presbyterian Church, 1939), 81. The wall is located approximately 20 feet from a four-lane stretch of Beatties Ford Road, and extends nearly 525 feet along the property's frontage on the eastern side of that busy thoroughfare. Given its proximity to the rapid development along the Beatties Ford Road corridor and the accompanying increase in vehicular traffic, the wall's continued integrity is at risk.



*Aerial Image of Williams Memorial Presbyterian Church Wall  
(red arrow indicates wall's location; blue arrow indicates marker's location) (source: Polaris 3G)*

The Williams Memorial wall stands about 3.5 feet tall and 18 inches deep. It is a low rock rubble wall with a stem or visible face comprised of randomly arranged white and dark brown rock. The stem rises into a domed

cap decorated with smaller, smooth stones (also in a random arrangement of white and dark brown), which in turn is topped by an intermittent line of even smaller white stones. All stones are embedded in mortar.



*Looking Toward Southern Terminus  
of Williams Memorial Wall*



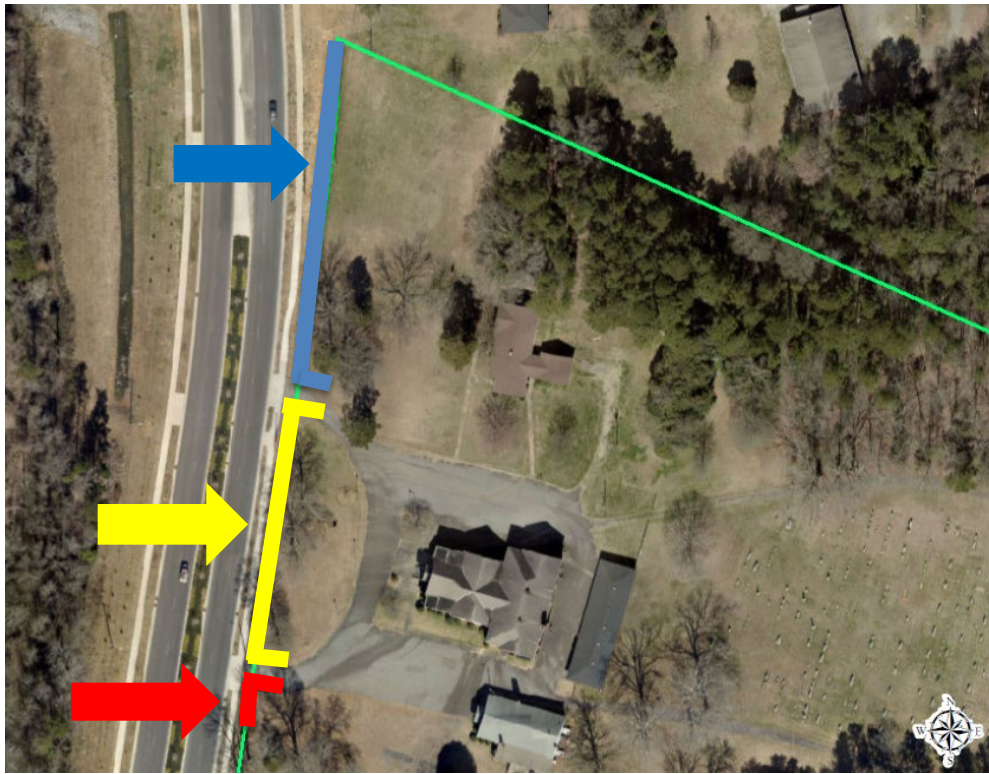
*Detail of Domed Cap  
of Williams Memorial Wall*



*Northern Entrance to Williams Memorial Presbyterian Church Property  
Looking Toward Northern Terminus of Wall*

In form and execution, the Williams Memorial wall is the least refined of the stone structures erected by E. L. Baxter Davidson in north Mecklenburg County. In comparison, the walls he provided for Huntersville's Hopewell Presbyterian Church span both sides of Beatties Ford Road and are longer (approximately 1,000 feet long on the eastern side of Beatties Ford Road and approximately 830 feet long on the western side), taller (ranging from 5 to 6 feet tall on the eastern side and from 3 to 4 feet tall on the western side), and deeper (both Hopewell walls are approximately 2 feet deep). The Hopewell walls are also more elaborate, featuring alternating symmetrical bands of white and dark brown rocks, as well as stairways, entrance openings for

driveways, and more piers. The Williams Memorial wall features only two entrance openings providing access for a semicircular driveway into the church grounds. As a result of the openings, the wall is constructed in three segments, as indicated on the map below: (1) an “L” shaped segment located immediately north of the property’s northern-most driveway entrance, which consists of a vertical line running north from that entrance and parallel with Beatties Ford Road for approximately 270 feet, and a horizontal line running east parallel with the exterior side of that northern-most driveway entrance for approximately 30 feet; (2) a second “L” shaped segment located immediately south of the property’s southern-most driveway entrance, which consists of a vertical line running south from that entrance and parallel with Beatties Ford Road for approximately 35 feet, and a horizontal line running east parallel with the exterior side of that southern-most driveway entrance for approximately 18 feet; and (3) a central “C” shaped segment located between the two other segments, which consists of a vertical line running parallel with Beatties Ford Road between the two driveway entrances for approximately 217 feet, a horizontal line running east parallel with the interior side of the northern-most driveway entrance for approximately 17 feet, and a horizontal line running east parallel with the interior side of the southern-most driveway entrance for approximately 18 feet.



*Approximate locations of segments 1 (blue line & arrow), 2 (red line & arrow), and 3 (yellow line & arrow) of the Williams Memorial Presbyterian Church Wall*



*Southern Entrance to Williams Memorial Presbyterian Church Property  
Looking Toward Southern Terminus of Wall*

A stone pier provided by Baxter Davidson stands in front of the main church building, nearly 50 feet behind the stone wall. The pier resembles a similar marker on the grounds of Hopewell Presbyterian Church. Both markers feature a stem composed of alternating strings of rough-faced dark brown stones and strings of rough-faced white stones, all embedded in mortar. Each marker rises perpendicularly from a toeless foundation to a pyramidal cap decorated with small, smooth, lighter-colored stones, and features a metal plaque displaying the name and founding date of the relevant church. Both markers stand approximately 6 feet tall and 2.5 feet in both length and width, but the Hopewell marker has a flint-rock finial fixed atop its cap that adds approximately 12 inches to its overall height. The Williams Memorial marker has no finial, but the slightly flattened top of its cap suggests that a stone finial may have originally topped the pier.



*West face of Williams Memorial Church Marker*

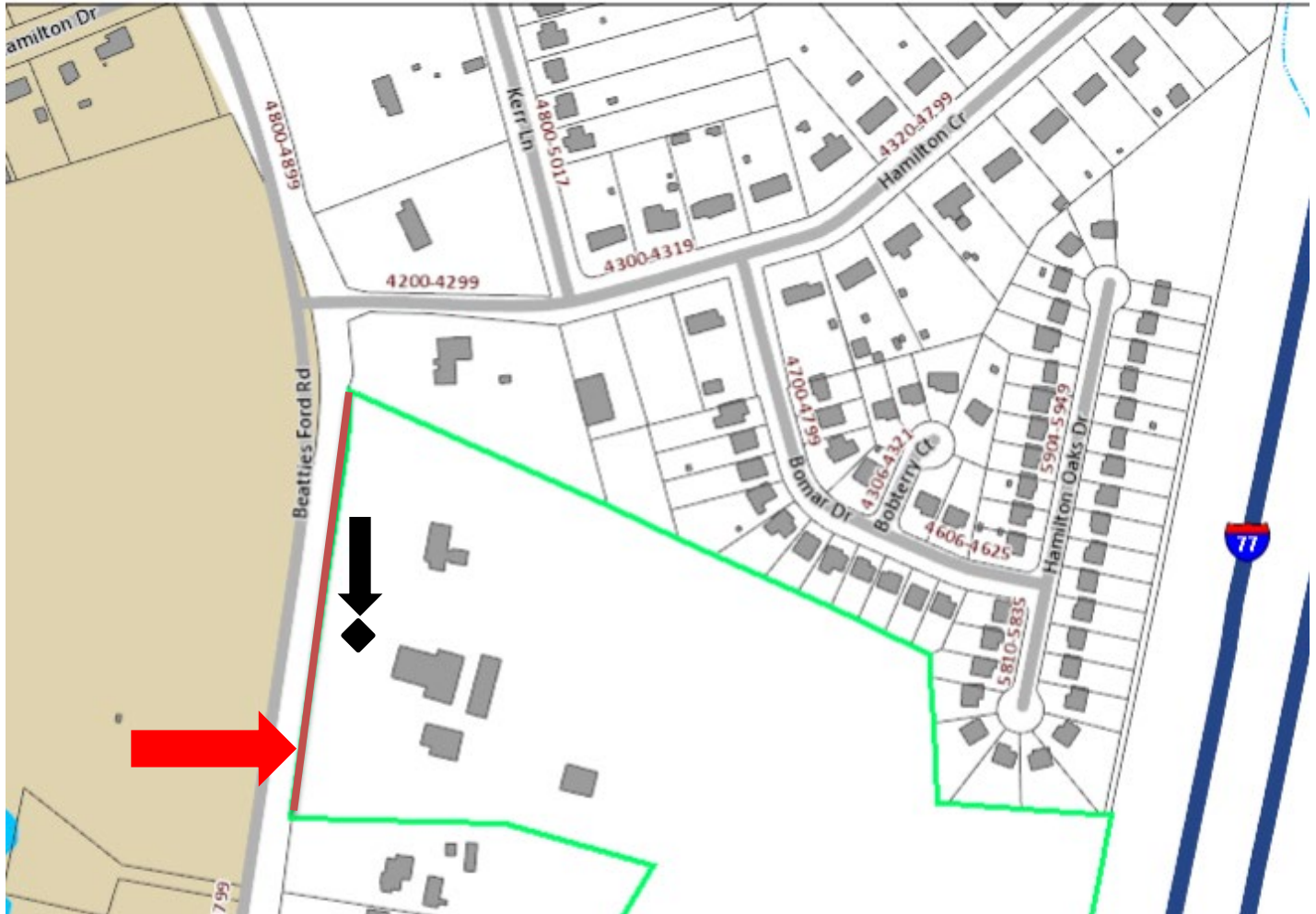


*Southern Entrance to Williams Memorial Presbyterian Church Property  
Looking Toward Northern Terminus of Wall*

# Polaris 3G Map – Mecklenburg County, North Carolina

## Williams Memorial Presbyterian Wall & Marker

Date Printed: 9/24/2021 5:19:03 PM



*Red line (indicated by red arrow) shows location of wall;  
black diamond (indicated by black arrow) shows approximate location of marker*