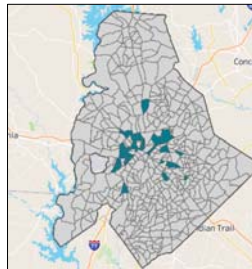


Staying in Place Data + Engagement

JULY 19, 2021

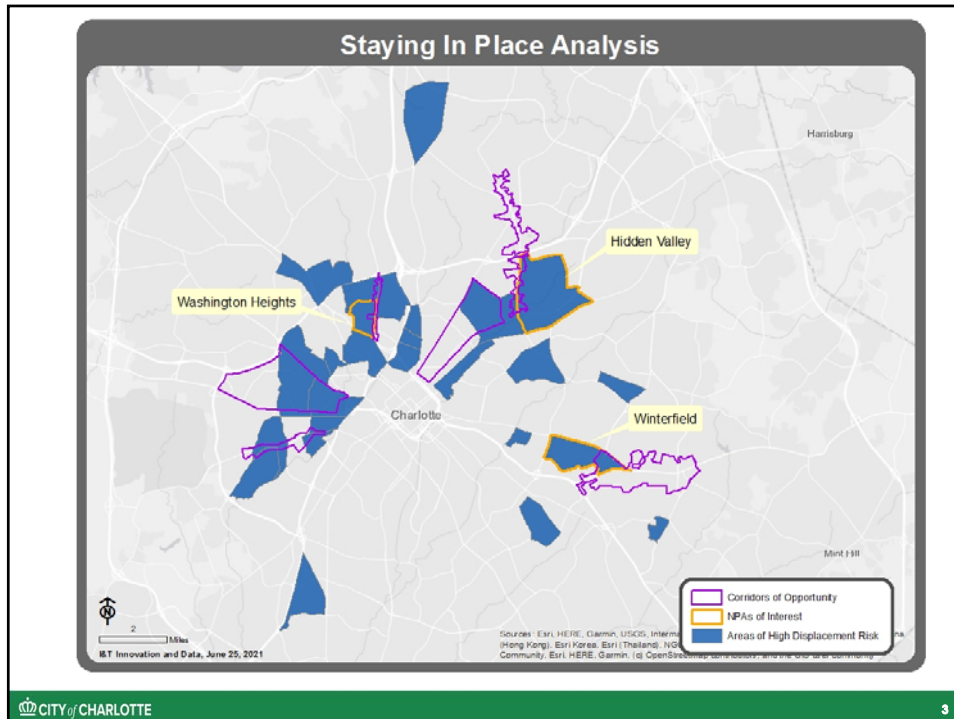
1

Displacement Risk Dashboard



- Developed collaboratively with internal staff and external stakeholders
- Visualizes three key questions:
 - Who is vulnerable to displacement?
 - Where is displacement risk high today?
 - What impacts displacement risk?
- Dashboard inputs and uses will evolve as strategy develops
- As programs and strategies are implemented, dashboard can be used to track displacement risk, and monitor and evaluate our progress

2



3

Next Steps

- ◀ **Begin engagement in pilot geographies**
 - Use publicly available data to identify households/blocks within pilot geographies for outreach activities
 - Learn about what services and supports a household may need to support staying in place
 - Use what we learn to inform anti-displacement efforts, identify partnerships, and establish programmatic investments for pilot, e.g.:
 - Home repair/rehab
 - Down payment assistance
 - Tree pilot
 - Water pipe pilot
 - Others?
- ◀ **Leverage dashboard to fuel collaboration (similar to violence prevention model)**

CITY OF CHARLOTTE 4

4