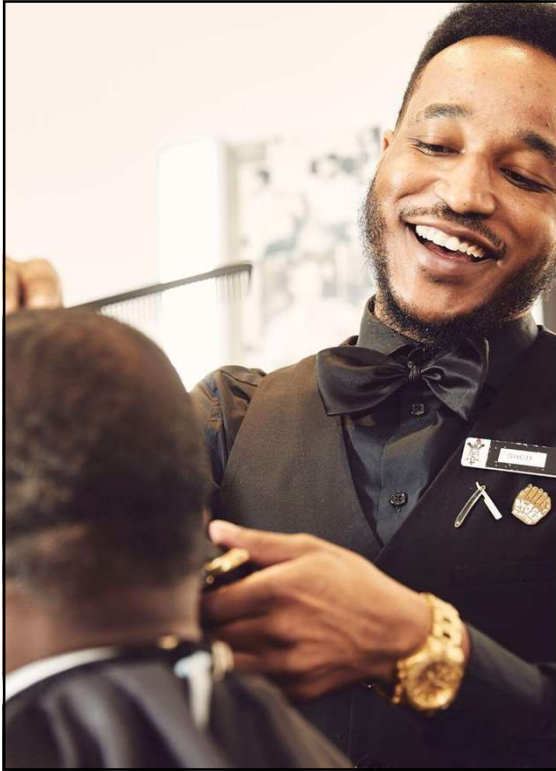


SouthPark Snapshot

- **Strong and Growing Submarket**
 - \$1 billion of new development in the pipeline
 - 100k residents within 3 miles of MSD
 - Worker foot traffic at 88% of pre-pandemic levels
 - Over 18MM non-work visits last year





SouthPark Snapshot

- **Workforce Hub**
 - 32,000+ workers at 1,000 businesses
 - 4 Fortune 1000 headquarters
 - Workforce lives in all Mecklenburg County zip codes
 - Half of workers live 7+ miles from MSD

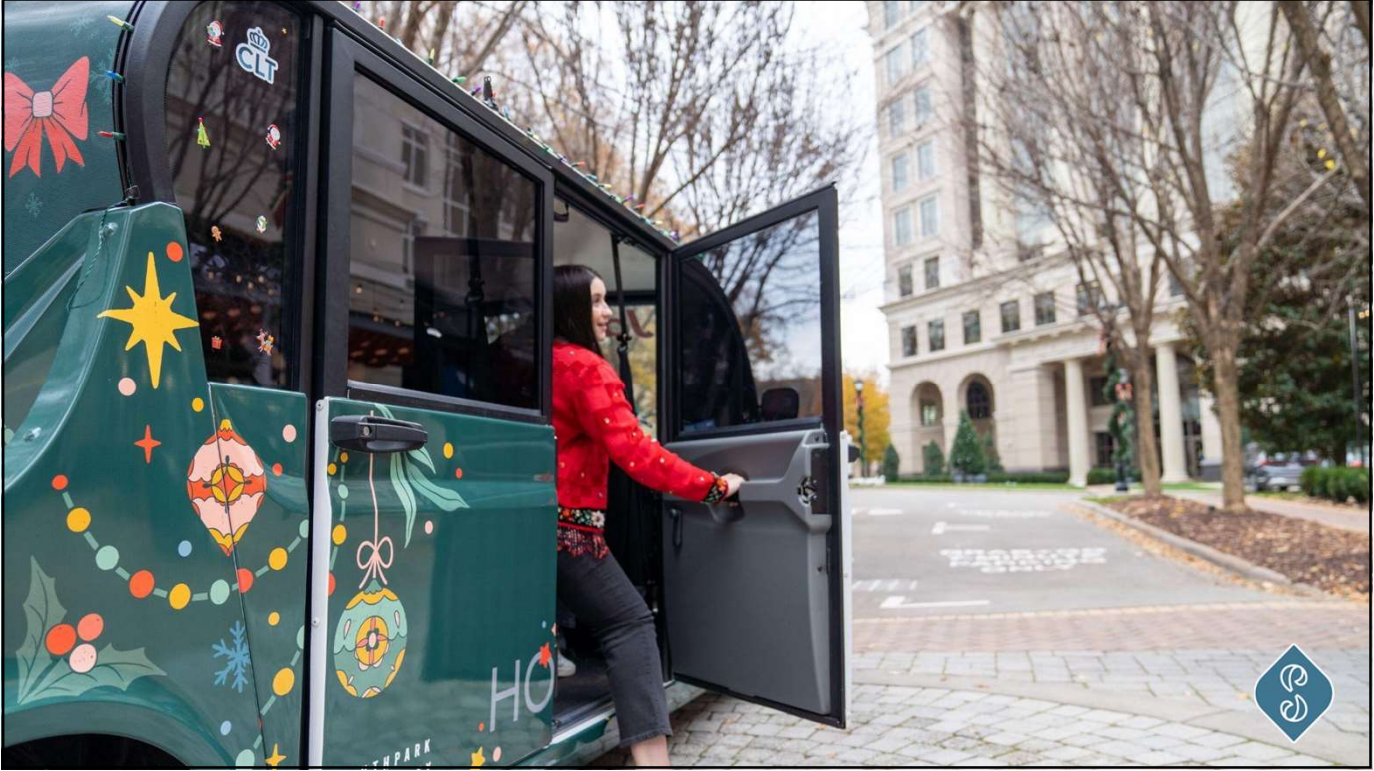


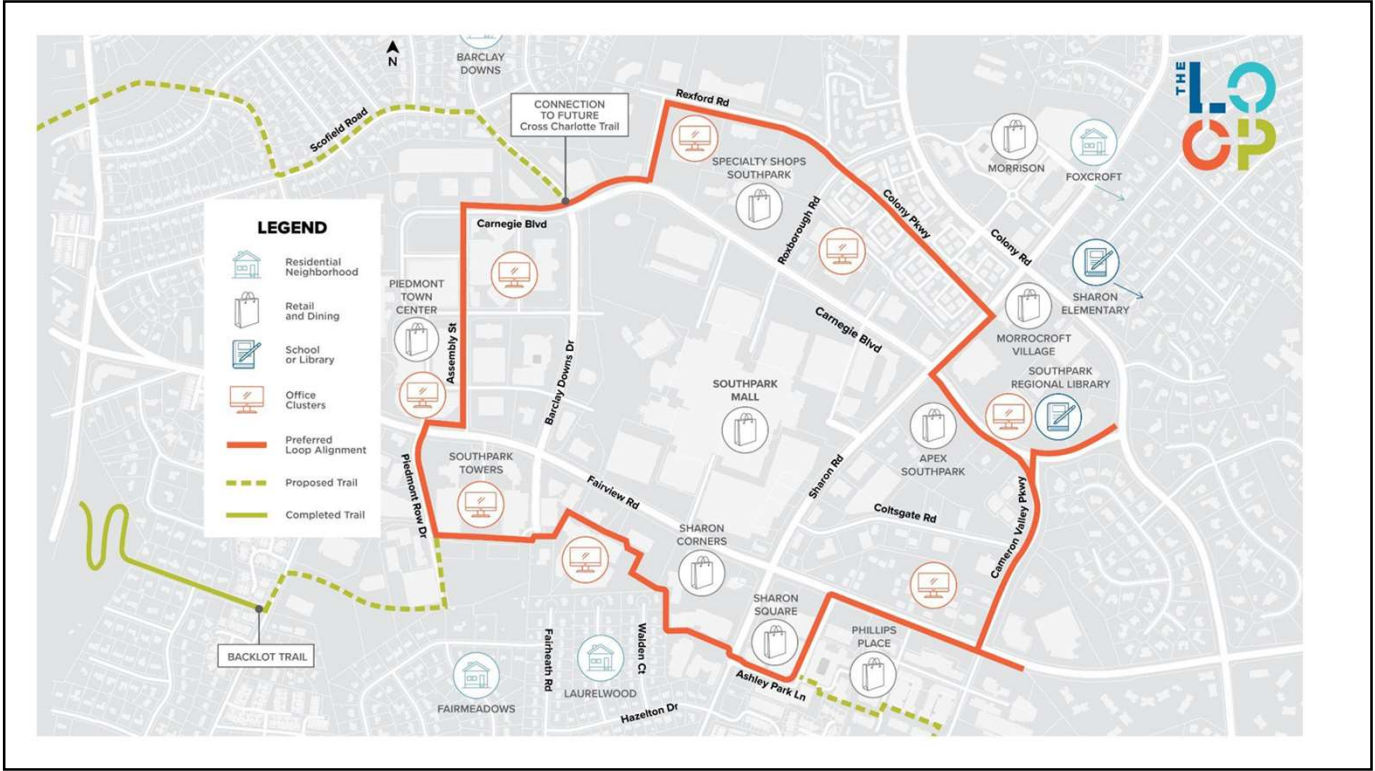
SouthPark Snapshot

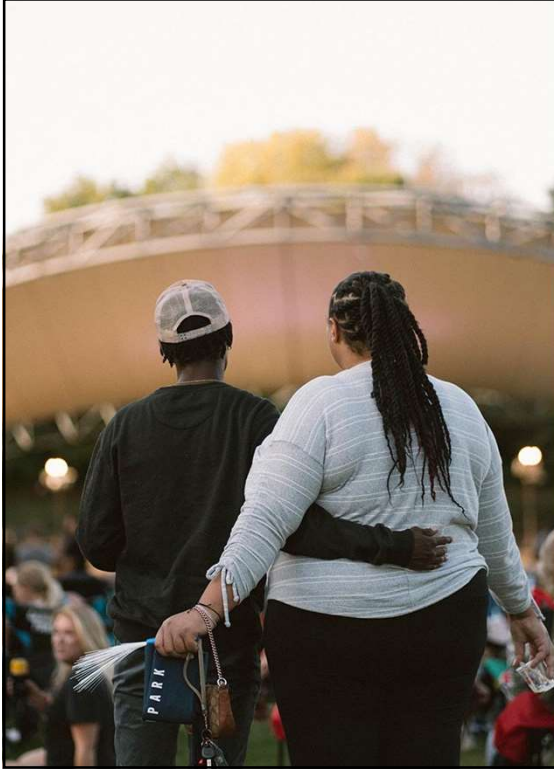
- **Regional Shopping & Dining Destination**
 - 1% retail vacancy rate
 - 96 market-exclusive brands
 - 30% of visitor-facing businesses are locally owned
 - SouthPark is second-most visited submarket for out-of-town guests











SouthPark Forward 2035 Vision Plan

- A walkable, energetic community where people connect and businesses thrive
- 60+ recommendations focused on public space, walkability, and mobility innovation
- \$250MM in public, private, and P3 projects
- SCP commits \$1MM over three years to kickstart implementation





Learn More & Stay Connected



southparkclt



southparkclt



**SouthPark
Community
Partners**

