

## **CHARLOTTE FUTURE 2040 COMMUNITY AREA PLANNING**

# **Implementing the Charlotte Future 2040 Comprehensive Plan**

TRANSPORTATION, PLANNING & DEVELOPMENT COMMITTEE  
DECEMBER 2, 2024



# Agenda

- ◁ Community Area Planning Overview
- ◁ Planning Process Outcomes & Engagement Summary
- ◁ Plan Outline & Example Spreads

VISION  
AND  
GOALS



IMPLEMENTATION  
INITIATIVES

Mapping  
Tools and  
Guidance for  
Public and  
Private  
Investment



The Vision For Our Growth



2040  
COMPREHENSIVE  
PLAN

How We GROW  
LAND USE



How We CONNECT  
MOBILITY



How We BUILD  
DEVELOPMENT





# Community Area Planning (CAP)

**Purpose:** Provide community-level guidance for growth & development (*including places, mobility, open space, capital facilities, community facilities & amenities*)

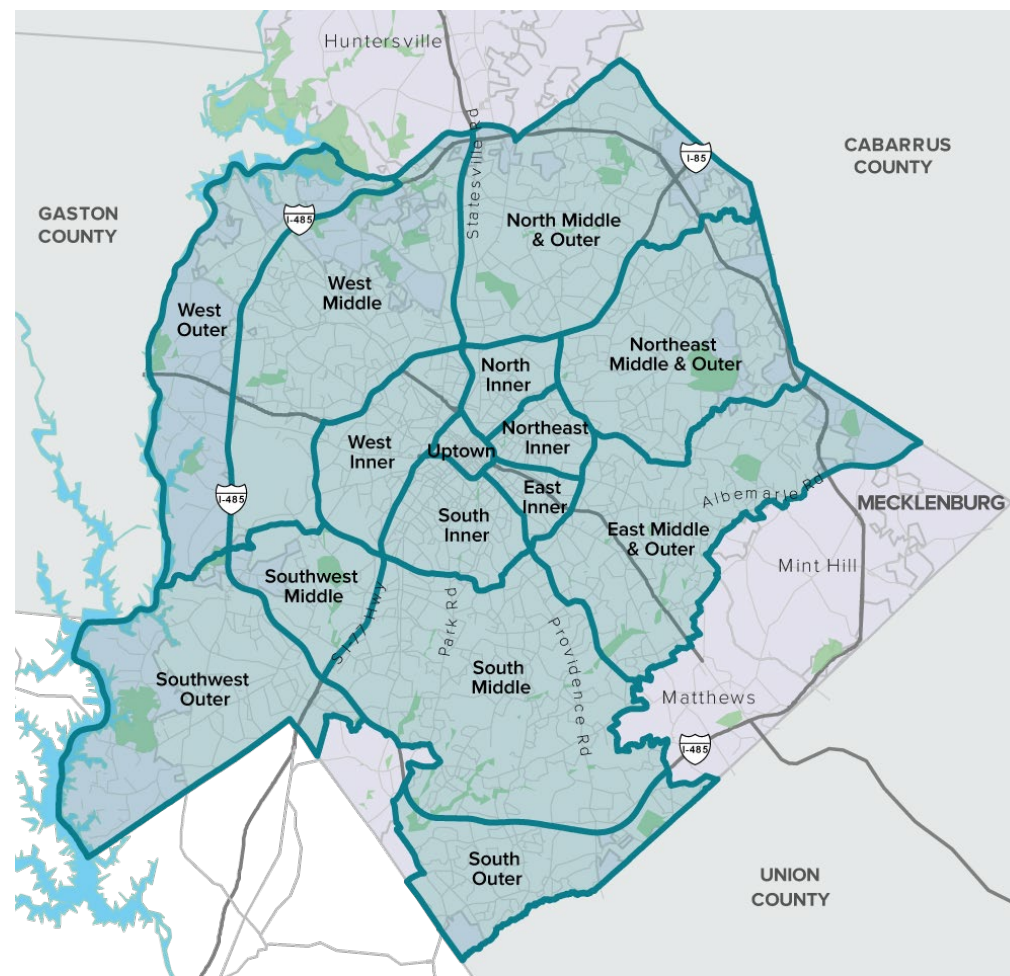
## Approach:

- Citywide = Equitable
- Larger geographies = Efficient

## Expected Outcomes:

- 14 Community Area Plans
  - Policy Map Refinements
  - Planned + Needed Projects/Programs
  - Illustrative Concepts
  - Implementation Strategy
- Refined 2040 Policy Map & Manual

## Community Area Planning Geographies





# Process + Plan Components

PROCESS

WINTER 2023

## Phase 1

Set The Stage



Identify a community's priorities for action

SPRING - FALL 2023

## Phase 2

Create Great Places



Ensure future development supports a community's priorities

SPRING - FALL 2024

## Phase 3

Support The Vision



Recommend projects and programs to support a community's priorities

FALL 2024

## Phase 4

Plan For Action



Develop an implementation strategy to address a community's priorities

WINTER 2025

## Phase 5

Review & Adoption



Request for adoption of Community Area Plans by City Council

OUTCOMES



### 14 Community Reports:

Identified each community's greatest needs in terms of access to housing choices, job opportunities, daily goods & services, and reduced environmental impacts.



### Revised Policy Map & Manual:

Looked for opportunities to increase access and reduce impacts through refinements to the Adopted 2040 Policy Map.



### Maps & Lists:

Will identify projects and programs needed to support recommendations for future development (via 2040 Policy Map).



### Implementation Strategy:

Will identify partnerships and timing needed to put recommendations into action

We are here

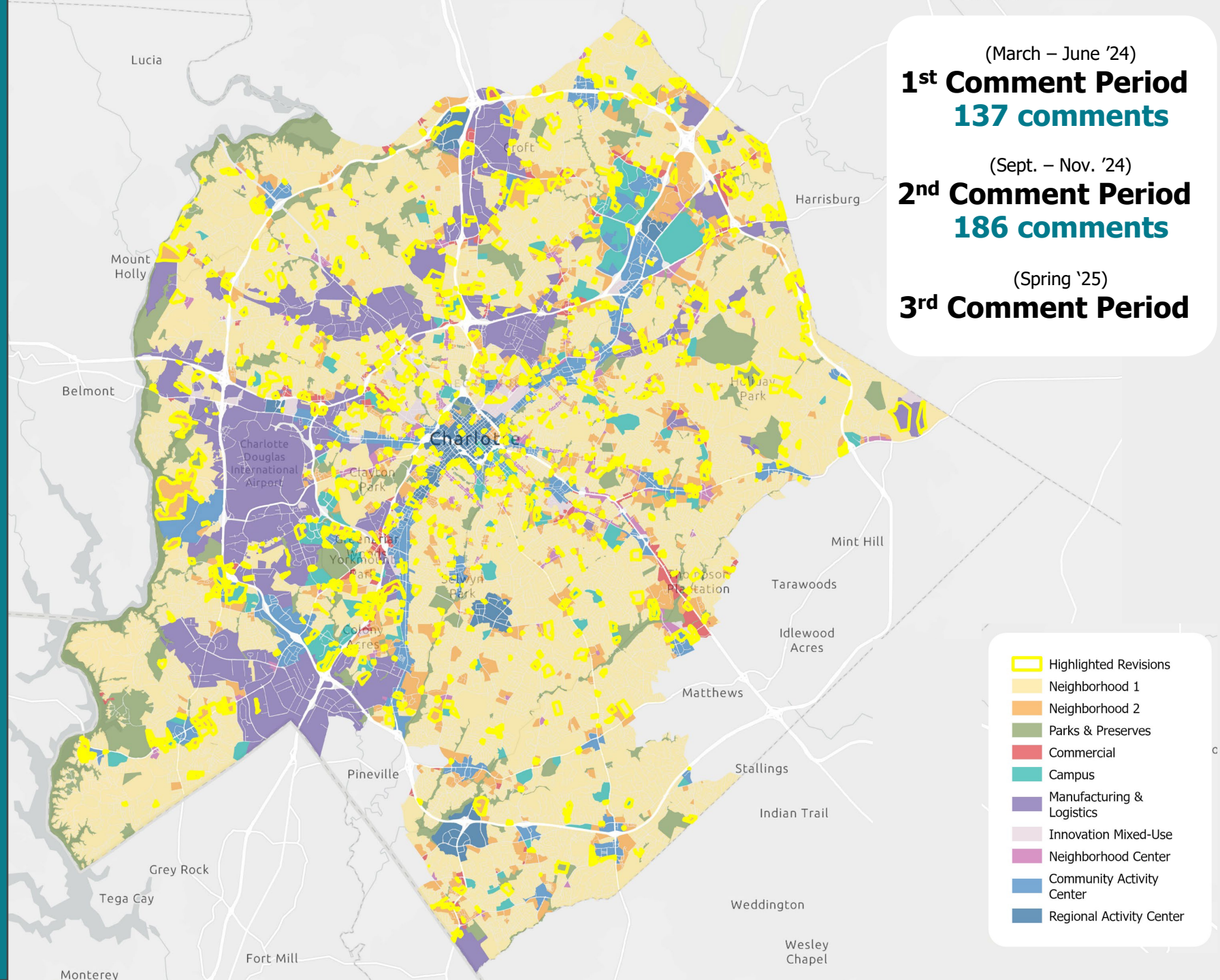


# Phase 2 Outcome: Revised 2040 Policy Map & Manual

*Reflects External &  
Internal Engagement*

*Total Change: 6%\**

*\*Revisions highlighted  
in yellow*





# Phase 3 Workshops & Webtool



	VIRTUAL	IN-PERSON
WEST	<b>Sep 3</b> Tuesday 11:00am - 12:30pm	<b>Sep 5</b> Thursday 5:00pm - 7:00pm
NORTH	<b>Sep 24</b> Tuesday 11:00am - 12:30pm	<b>Sep 26</b> Thursday 5:00pm - 7:00pm
EAST	<b>Oct 15</b> Tuesday 11:00am - 12:30pm	<b>Oct 17</b> Thursday 5:00pm - 7:00pm
SOUTH	<b>Nov 12</b> Tuesday 11:00am - 12:30pm	<b>Nov 14</b> Thursday 5:00pm - 7:00pm



## Mobility

- CATS
- CDOT
- CRTPO



## Sustainability & Open Space

- Meck. Co. Manager's Office
- Meck. Co. Park & Rec
- Office of Sustainability
- Tree Canopy Preservation



## Public Services

- Fire Dept.
- Char-Meck Police
- General Services
- CLT Water
- City/County Stormwater



## Community Character

- Historic Districts
- Urban Design Center
- Housing & Neighborhood Services



## Special Districts

- Corridors of Opportunity
- Municipal Service Districts

*Comment Period Closed November 29th*



# Phase 3 Engagement

*Equitable & Inclusive*

**CONSTANT**



**COORDINATED**



**COLLABORATIVE**



## Workshops

**8** Workshops  
**319** Participants  
**339** Comments



## Other Meetings

**28** Meetings  
**1,597** Interactions



## Material Distribution

**650** Flyers  
**25** Posters  
**25** Yard Signs



## Focus Groups

**50** Participants  
**6** Meetings

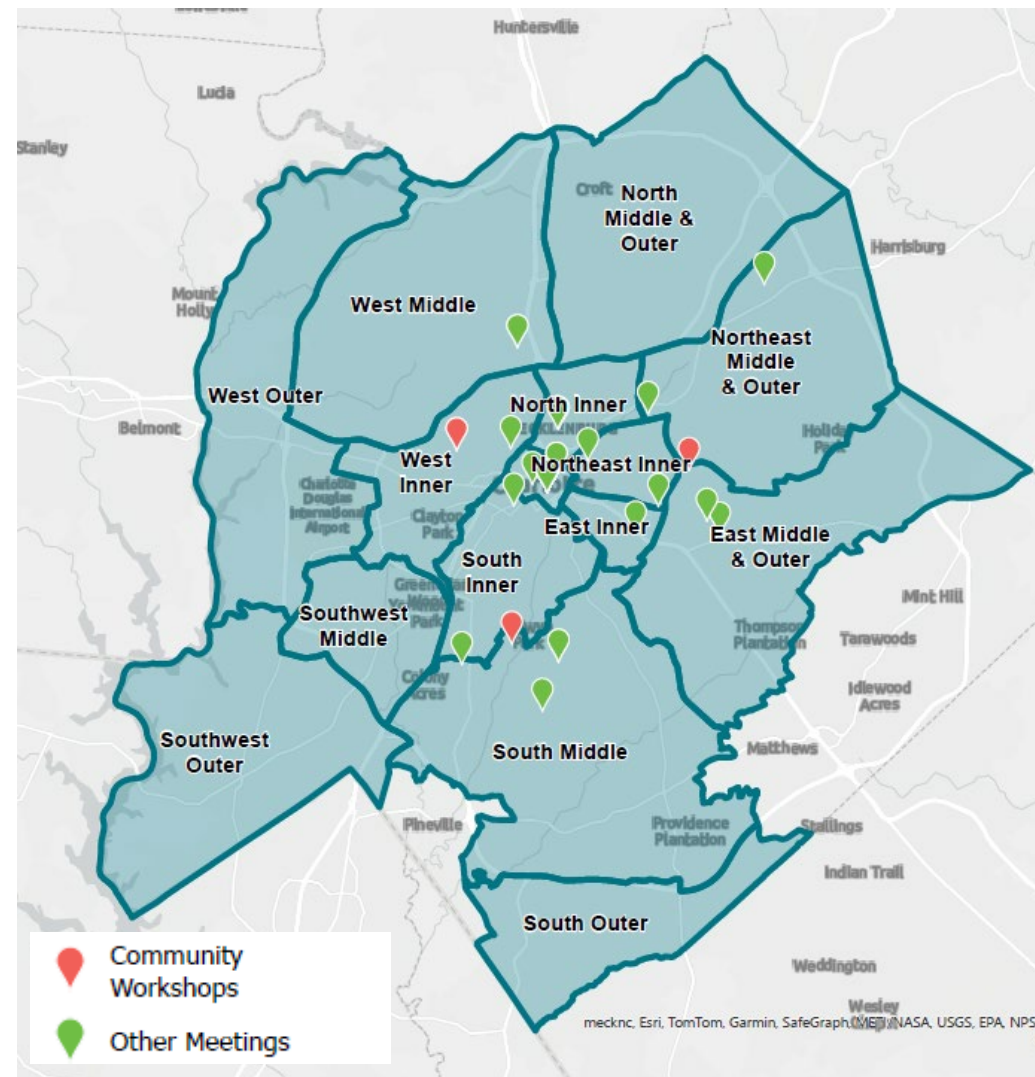


## Socials

**1,546** Interactions  
**166,334** Accounts Reached



**Email & Newsletter**  
**29,028** Opens  
**1,942** Shares

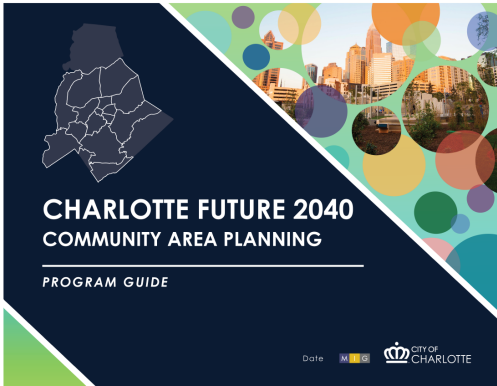




# CAP Outline



## 1 Program Guide



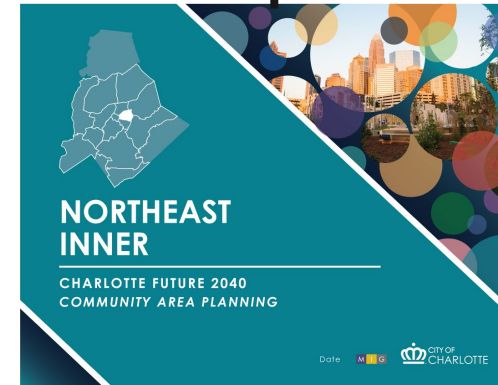
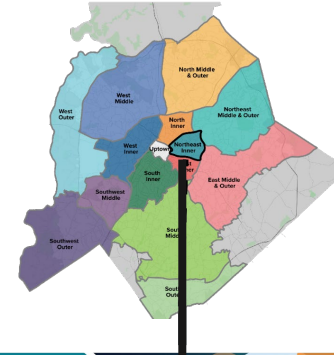
A INTRODUCTION

B PLANNING FRAMEWORK

C CITYWIDE POLICIES

D ENGAGEMENT SUMMARY

E GLOSSARY OF TERMS



## 14 Area Plans

1 COMMUNITY AREA PROFILE

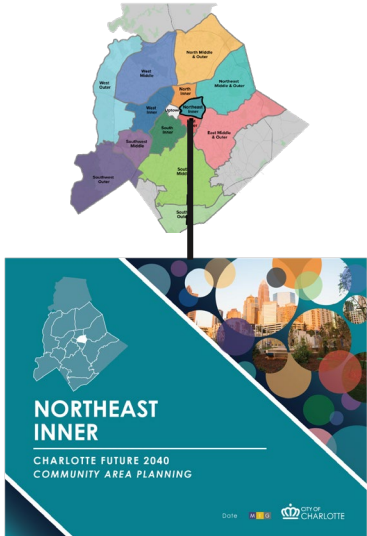
2 COMMUNITY NEEDS & GOALS

3 CREATING COMPLETE COMMUNITIES

4 SUPPORTING THE VISION

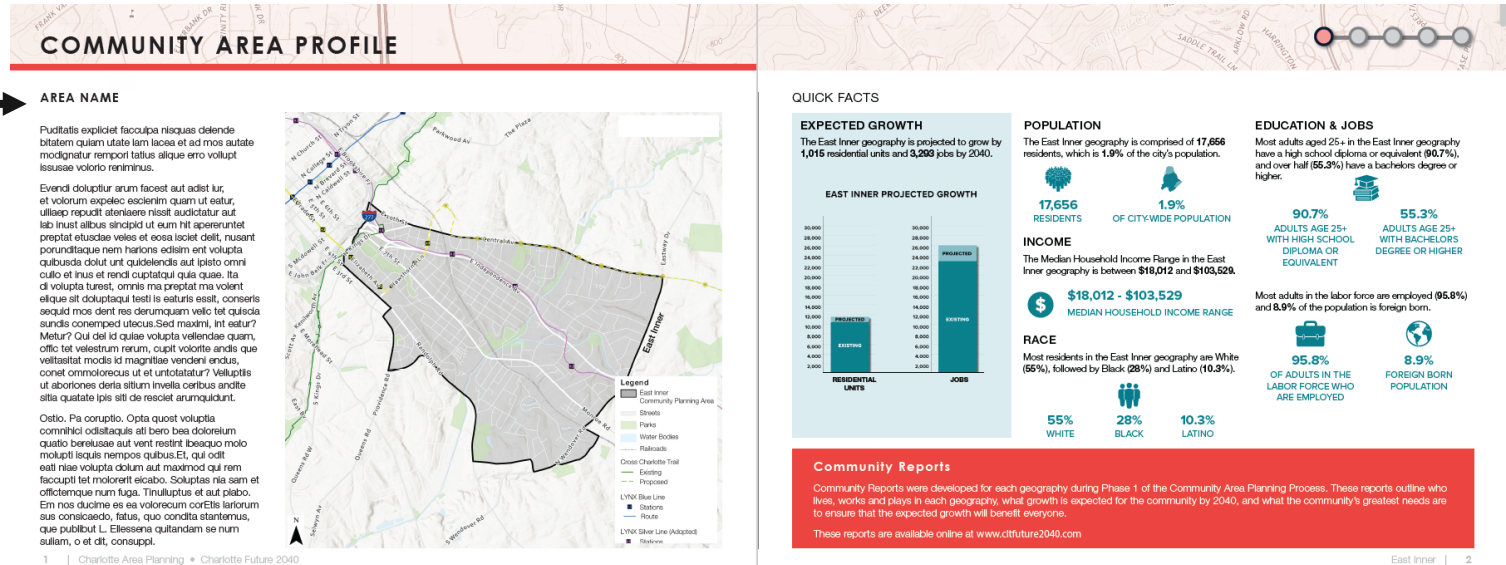
5 IMPLEMENTATION: ACTION ITEMS & ILLUSTRATIVE CONCEPTS

# CAP Example: *Community Area Profile*



## 14 Area Plans

- 1 COMMUNITY AREA PROFILE
- 2 COMMUNITY NEEDS & GOALS
- 3 CREATING COMPLETE COMMUNITIES
- 4 SUPPORTING THE VISION
- 5 IMPLEMENTATION: ACTION ITEMS & ILLUSTRATIVE CONCEPTS



- Summary of existing land uses, building form, infrastructure, demographics, and projected growth.
- Incorporates the 14 *Community Reports* published in Feb. 2023

# CAP Example: *Community Needs & Goals*



## 14 Area Plans



### COMMUNITY NEEDS & GOALS

EGF METRICS

Access to Amenities	Access to Employment	Access to Housing	Environmental Justice
4	3	3	5

**KEY**  
Scores < 5 = priority  
1st Priority  
2nd Priority  
3rd Priority  
4th Priority  
White background = not priority

**GOAL 3: HOUSING ACCESS FOR ALL**  
Charlotte will ensure opportunities for residents of all incomes to access affordable housing through the preservation of naturally occurring affordable and workforce housing and increasing the number of affordable and workforce housing units through new construction.

**GOAL 4: TRANSIT- AND TRAIL-ORIENTED DEVELOPMENT (2TOD)**  
Charlotte will promote moderate to high density, compact, mixed-use urban development along high-performance transit lines and near separated shared-use paths or trails.

**GOAL 6: HEALTHY, SAFE, AND ACTIVE COMMUNITIES**  
All Charlotteans will live and work in safe and resilient neighborhoods that enable healthy and active lifestyles by reducing exposure to harmful environmental contaminants, expanding and improving the quality of tree canopy, encouraging investment in walking, cycling, and recreation facilities, and providing access to healthy food options and health care services.

**GOAL 7: INTEGRATED NATURAL AND BUILT ENVIRONMENTS**  
Charlotte will protect and enhance its surface water quality, tree canopy, and natural areas with a variety of trees, plantings, green infrastructure, green building practices, and open space at different scales throughout the entire community as a component of sustainable city infrastructure.

5 | Charlotte Area Planning • Charlotte Future 2040

East Inner | 6

- Needs as identified by the *Equitable Growth Framework* (Access to Housing Choices, Job Opportunities, Daily Goods/Services & Environmental Justice Impacts; Adopted within 2040 Comprehensive Plan, 2021)
- Four to eight 2040 Comp. Plan Goals identified as priorities based on needs

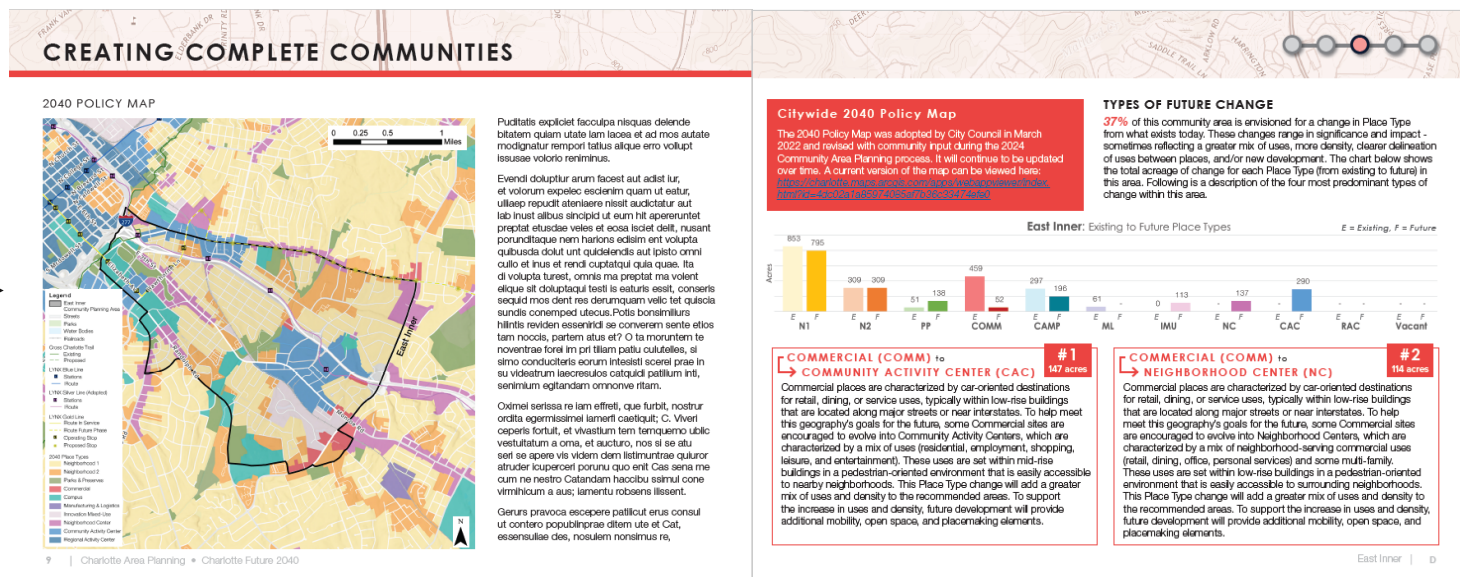


# CAP Example: *Creating Complete Comm.*



## 14 Area Plans

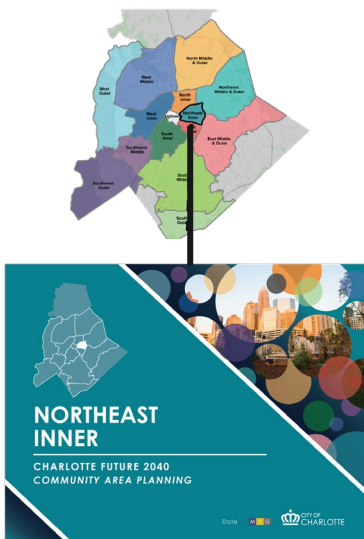
- 1 COMMUNITY AREA PROFILE
- 2 COMMUNITY NEEDS & GOALS
- 3 CREATING COMPLETE COMMUNITIES
- 4 SUPPORTING THE VISION
- 5 IMPLEMENTATION: ACTION ITEMS & ILLUSTRATIVE CONCEPTS



- Recommendations for future development (via Place Types within the 2040 Policy Map; Two Revised Draft Maps published in Feb. 2024 + Sept. 2024)
- Explanation of how recommended Place Types advance priority goals & address community needs

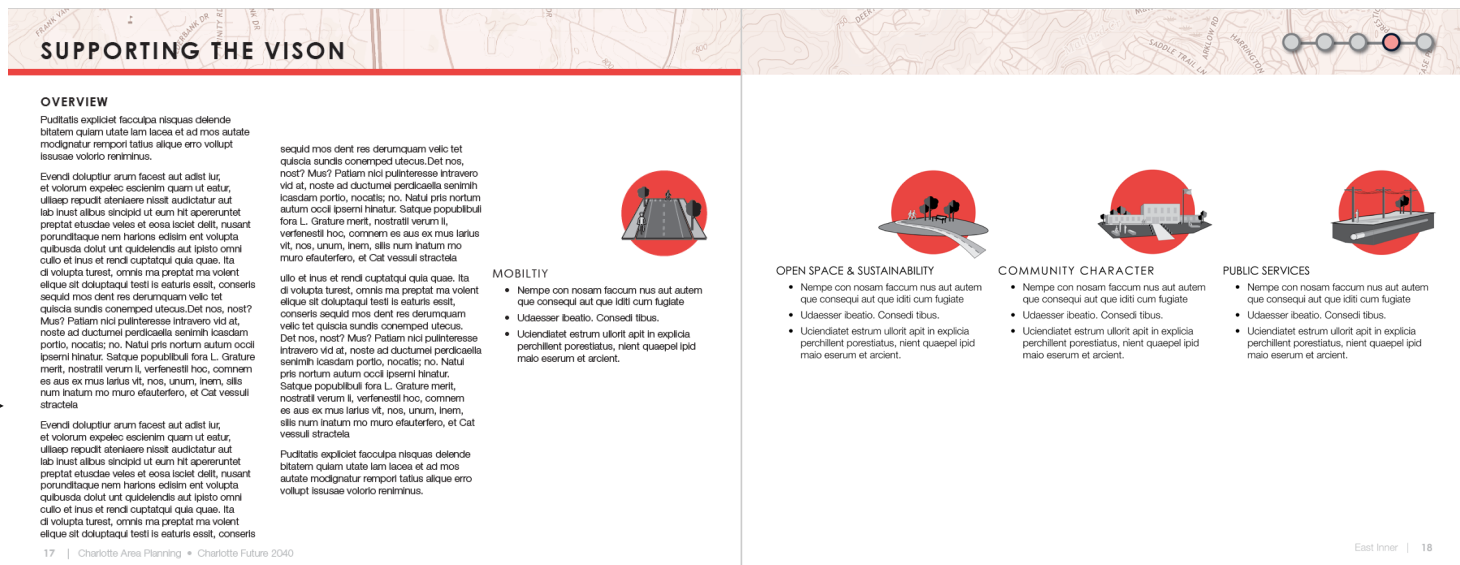


# CAP Example: *Supporting The Vision*



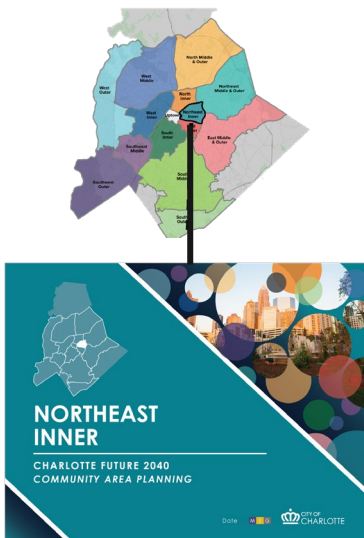
## 14 Area Plans

- 1 COMMUNITY AREA PROFILE
- 2 COMMUNITY NEEDS & GOALS
- 3 CREATING COMPLETE COMMUNITIES
- 4 SUPPORTING THE VISION
- 5 IMPLEMENTATION: ACTION ITEMS & ILLUSTRATIVE CONCEPTS



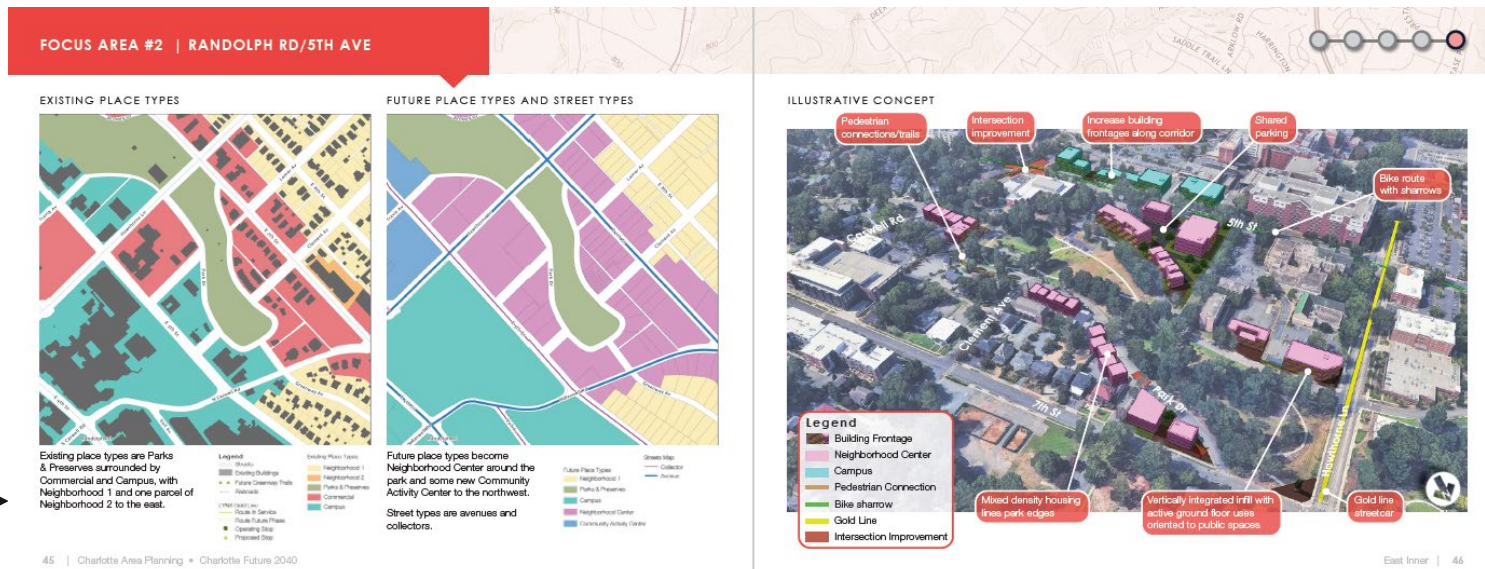
- Includes four sections: Mobility, Open Space & Sustainability, Community Character, Public Services (consistent with '24 Workshops)
- Outlines existing + new policies, projects, and programs that will support future development (via Place Types)

# CAP Example: *Implementation*



## 14 Area Plans

- 1 COMMUNITY AREA PROFILE
- 2 COMMUNITY NEEDS & GOALS
- 3 CREATING COMPLETE COMMUNITIES
- 4 SUPPORTING THE VISION
- 5 IMPLEMENTATION: ACTION ITEMS & ILLUSTRATIVE CONCEPTS



- Action Items: Outlines projects + programs managed by various departments that implement plan recommendations. (Not adopted by Council)
- Illustrative Concepts: Portray how an area may evolve based on development policies + regulations (2040, SMP, UDO)



# *Tentative* Review & Adoption

<b>DECEMBER '24</b>	Presentation to TPD Committee District Council Meetings
<b>JANUARY '25</b>	Presentation to City Council
<b>FEBRUARY '25</b>	City Office Hours
<b>MARCH '25</b>	DRAFT Plan Release

*Public may  
submit  
comments until  
plan adoption*

# Questions?

**VISIT OUR WEBSITE**

[CLTFUTURE2040.COM](https://CLTFUTURE2040.COM)

**FOLLOW US**

 @cltplanning

