

CHARLOTTE FUTURE 2040 COMMUNITY AREA PLANNING

Implementing the Charlotte Future 2040 Comprehensive Plan

TRANSPORTATION, PLANNING, DEVELOPMENT COMMITTEE
MARCH 4, 2024



Presentation Overview

- Community Area Planning – Relationship to other initiatives
- CAP Process & Expected Outcomes
- Engagement – Framework + Results
- Next Steps





VISION AND GOALS



The Vision For Our Growth



2040
COMPREHENSIVE
PLAN

IMPLEMENTATION INITIATIVES

Mapping Tools and Guidance for Public and Private Investment



How We GROW LAND USE



How We CONNECT MOBILITY



How We BUILD DEVELOPMENT



Alignment Rezoning

Layered Approach to Planning



Community Area Planning (CAP)

Purpose: Provide community-level guidance for growth & development (*including places, mobility, open space, capital facilities, community facilities & amenities*)

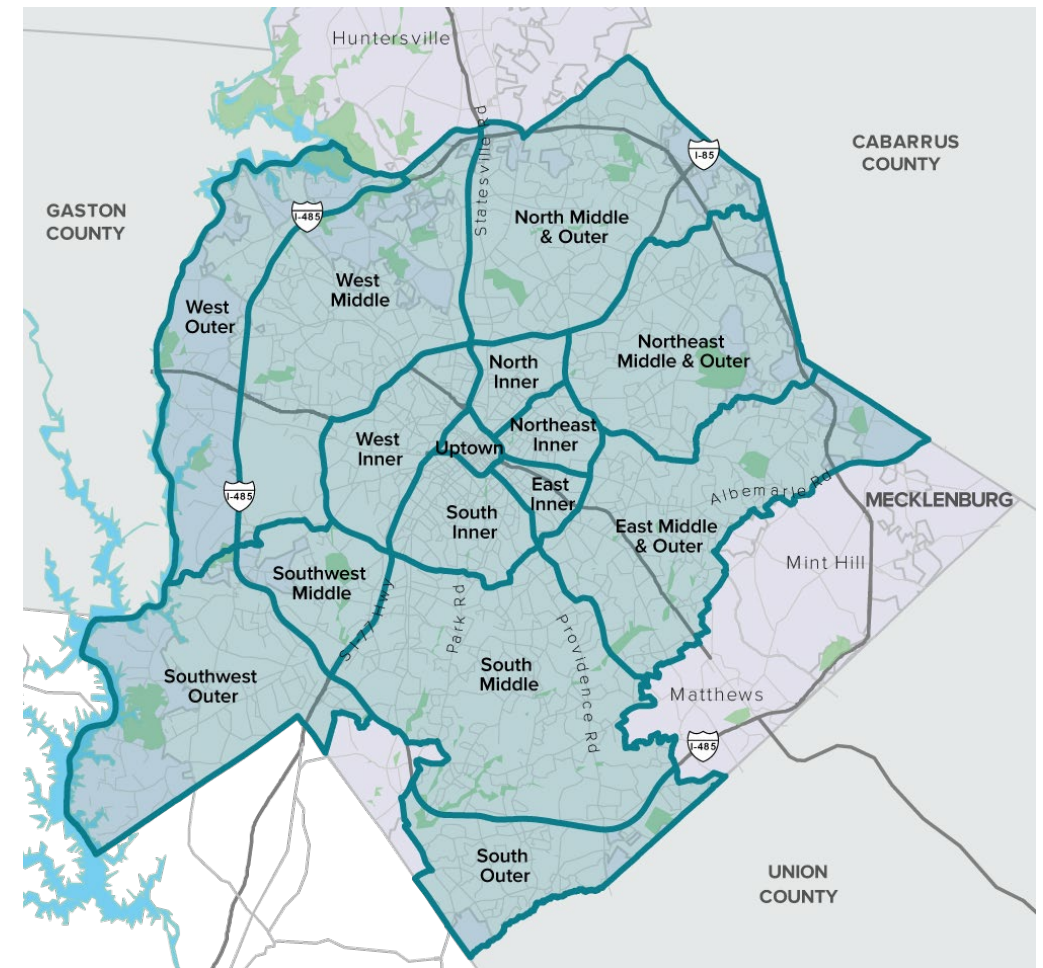
Approach:

- Citywide = Equitable
- Larger geographies = Efficient

Expected Outcomes:

- 14 Community Area Plans
 - Policy Map Refinements
 - Planned + Needed Projects/Programs
 - Illustrative Concepts
 - Implementation Strategy
- Refined 2040 Policy Map

Community Area Planning Geographies



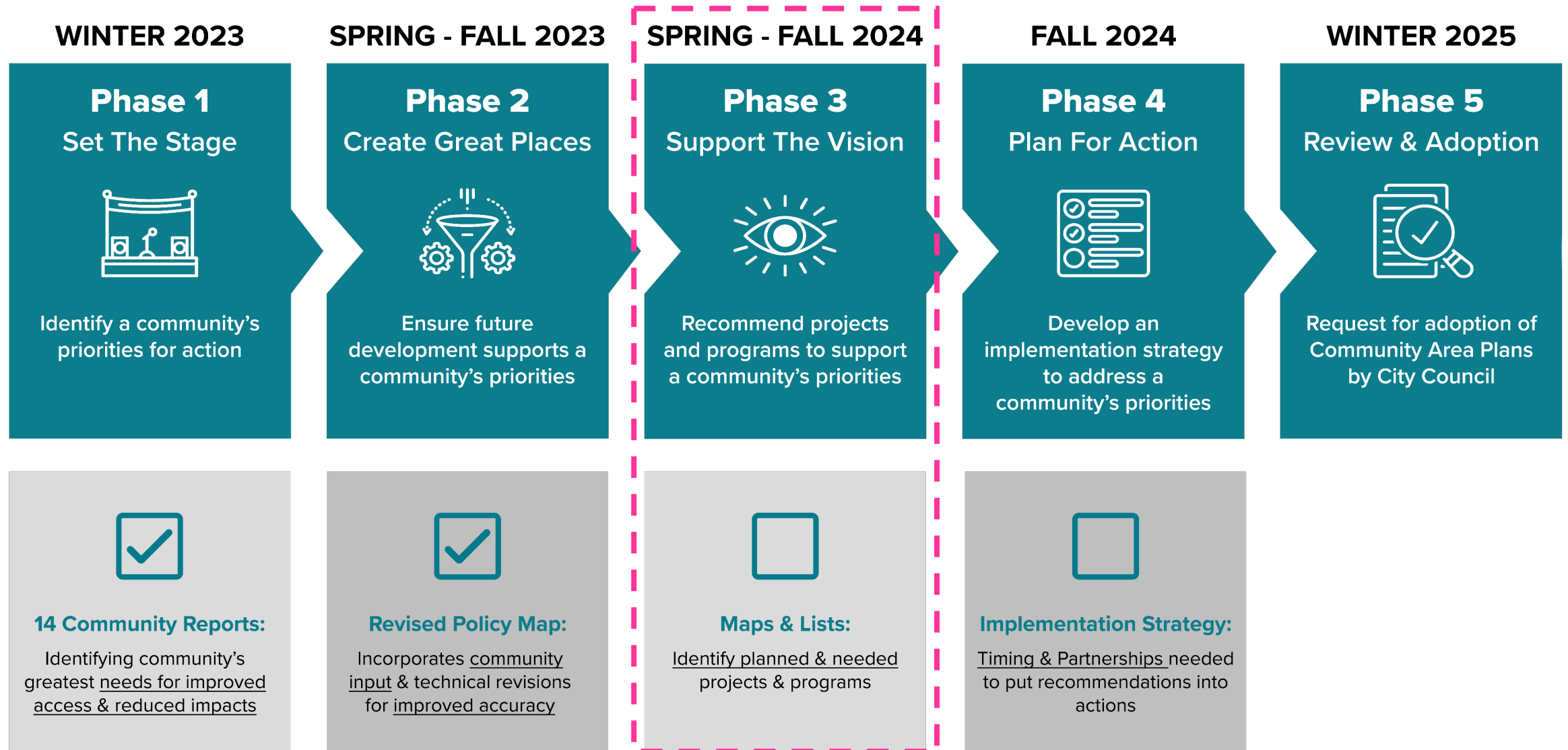


Communicating Expected Outcomes

Plans <i>will</i>	Regulations
Provide policies to address development opportunities/issues + inform decision-making	<i>But not...</i> Create regulations or laws <i>(Updated regulations included in Unified Development Ordinance)</i>
Identify public and private investments needed to achieve vision	<i>But not...</i> Provide funding and implementation overnight
Possibly recommend zoning changes in appropriate locations	<i>But not...</i> Rezone property
Guide more appropriate development	<i>But not...</i> Stop development



Process + Plan Components



We are here



Our Team

ADVISORS & ADVOCATES



Executive Leadership Team

City Manager's Office
Department Directors

PROJECT MANAGEMENT



Core Team

Long-Range Planning, Urban Design & Historic Preservation, Entitlement Services
Consultant Team

TECHNICAL COLLABORATORS



Departmental Partners

All Planning Divisions & City Departments, Mecklenburg County Park & Recreation, CMS



Regional Partners

Centralina Regional Council of Governments, CRPTO, Catawba Lands Conservancy, NCDOT, SouthPark + Center City + University City Partners



Community Engagement

Our Equitable & Inclusive Strategy

CONSTANT



COORDINATED



COLLABORATIVE



130,000+ Interactions
To Date



Workshops

42 Workshops
445 Participants
877 Comments



**Library
Office Hours**

1,040 Office Hours
179 Interactions



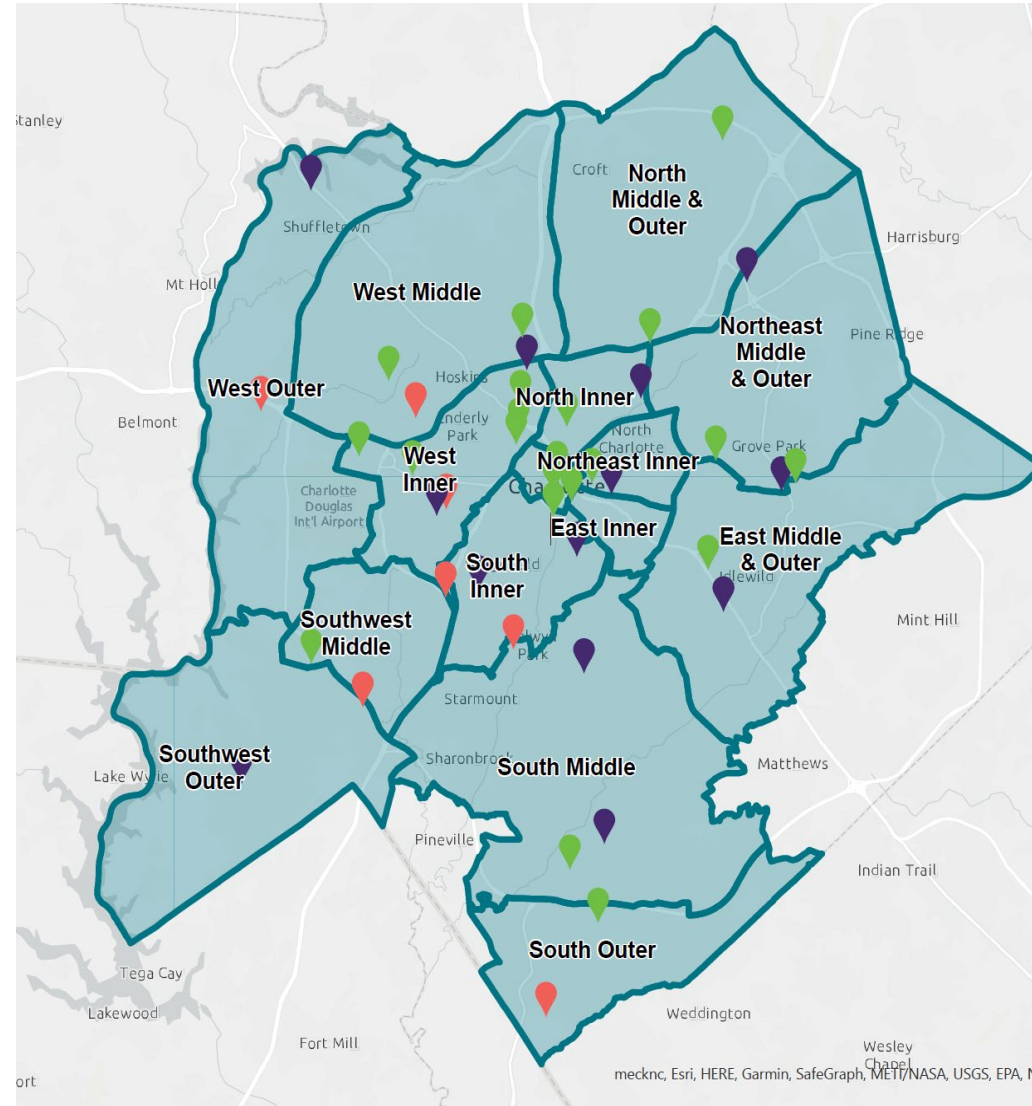
Other Meetings

33 Meetings
1,500 Interactions



Virtual Platforms

100,000+
Interactions



How input was used?

External Engagement

- Input = 42 Workshops, 42 Focus Areas
- **Community-Driven Revisions**
 - Balancing Priorities
 - Confirming the Vision
 - Enhancing Activity Centers
- **Alignment with Vision & Values**
- **Refined 1% of Policy Map**

Internal Engagement

- Input = Partners (Alignment Rezoning, Corridors of Opportunity, Strategic Investment Areas, Park & Rec, Catawba Lands Conservancy, Centralina Council)
- **Technical Revisions**
 - Translation corrections
 - Edge refinements
 - Data updates
- **Improved accuracy**
- **Refined 5% of Policy Map**

Total Change: 6% of Policy Map Refined



Next Steps

Timeline	REVISED POLICY MAP & MANUAL	CAP ENGAGEMENT
SPRING '24	1st Draft Revised Policy Map + Manual <ul style="list-style-type: none"> 90-day Public Comment Period 	Youth Community Planning Day ARZ Community Workshops CAP Pop-Up Events
SUMMER '24		CAP Focus Groups (UNCC Partnership) City of Charlotte Staff Workshops
FALL '24	2nd Draft Revised Policy Map + Manual <ul style="list-style-type: none"> 90-day Public Comment Period 	Phase 3 CAP Community Workshops (8)
WINTER '25	3rd Draft Revised Policy Map + Manual <ul style="list-style-type: none"> 90-day Public Comment Period 	Public Release: 14 Draft Plans



3 Ways to Provide Feedback

- Online Map Application
- Email
- In-Person Events

Hardcopies available at all libraries



Phase 3 Community Workshops

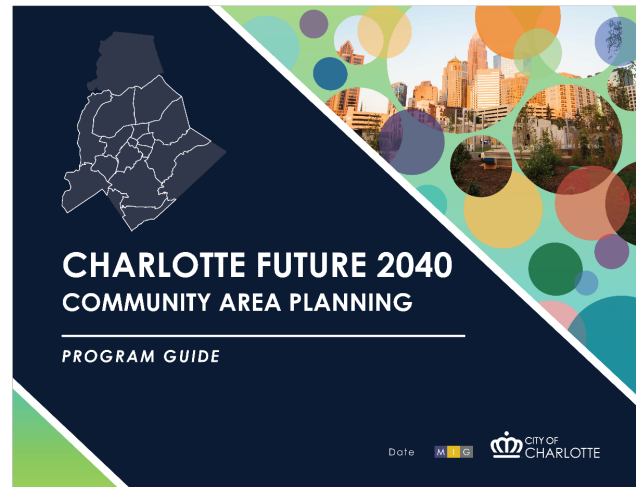
- 4 In-Person, 4 Virtual
- Stations: Mobility, Sustainability + Open Space, Public Services, Comm. Character
- Objective: Identify Planned + Needed Projects & Programs



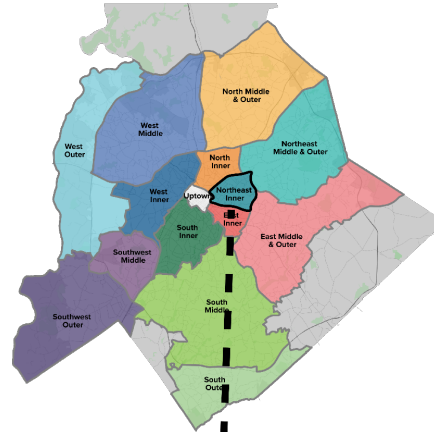
DRAFT Document Design

1 Guide

- # CAP OVERVIEW
- # COMMUNITY ENGAGEMENT SUMMARY
- # GLOSSARY OF TERMS



14 Plans



Plan Contents

- # COMMUNITY AREA PROFILE
- # GOAL PRIORITIES
- # FUTURE PLACE TYPES & ANTICIPATED CHANGE
- # PROJECTS & PROGRAMS
- # IMPLEMENTATION: FOCUS AREAS & ACTION ITEMS



Questions?

VISIT OUR WEBSITE

cltfuture2040.com

FOLLOW US

