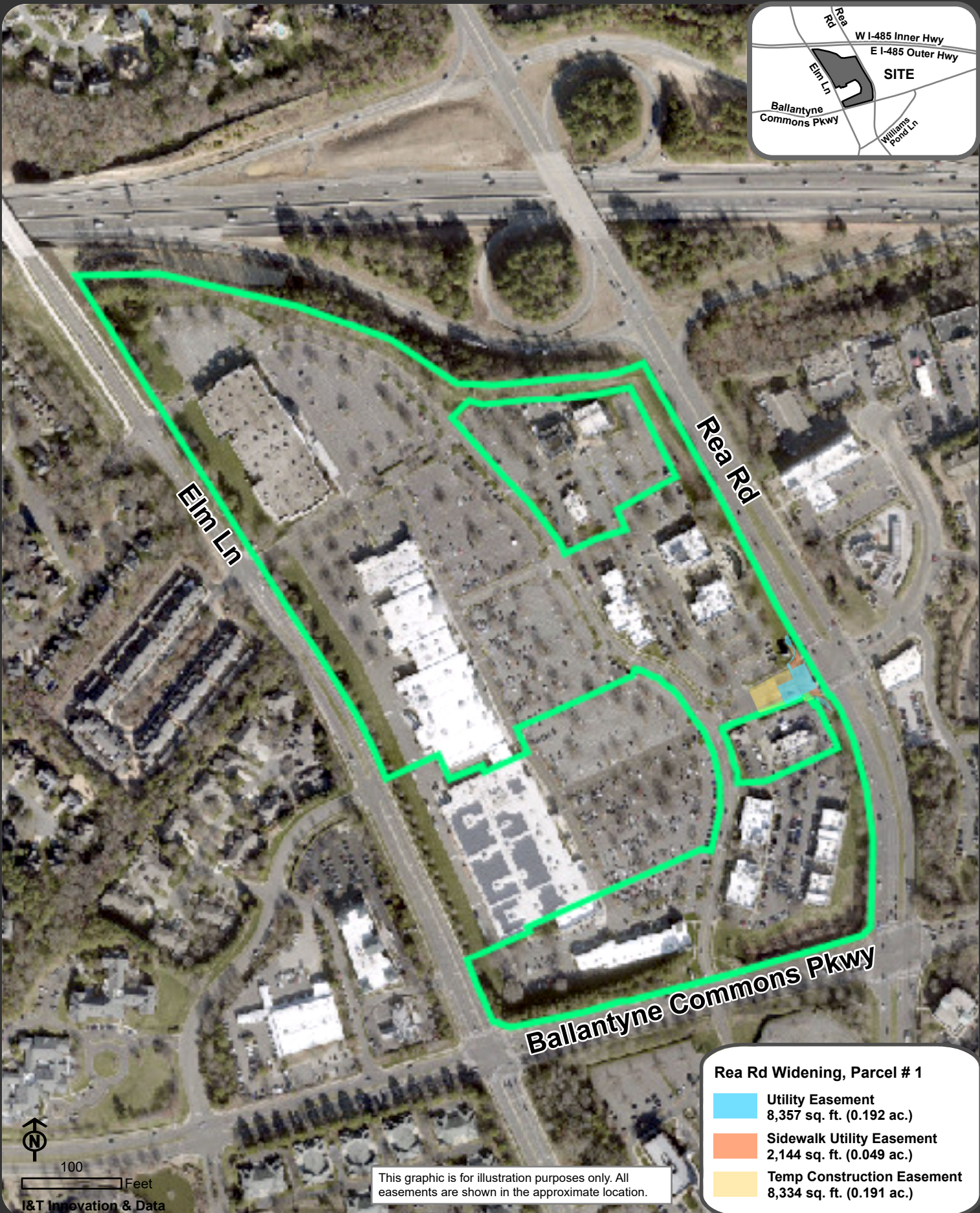


Location Map: Property Transactions - Rea Road Widening, Parcel # 1 - Council District 7



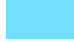


100

Feet

I&T Innovation & Data

This graphic is for illustration purposes only. All easements are shown in the approximate location.

Rea Rd Widening, Parcel # 1

-  Utility Easement
8,357 sq. ft. (0.192 ac.)
-  Sidewalk Utility Easement
2,144 sq. ft. (0.049 ac.)
-  Temp Construction Easement
8,334 sq. ft. (0.191 ac.)