



CHARLOTTE  
FUTURE

2040  
COMPREHENSIVE  
PLAN

OUR CITY. OUR PLAN. OUR FUTURE.



CHARLOTTE  
FUTURE

2040  
COMPREHENSIVE  
PLAN

WHAT WILL THE PLAN DO?

CITY OF  
CHARLOTTE

## OUR CITY'S "GUIDING LIGHT"

- Guides our growth over the next 20 years.
- A "living document" that integrates community input and best practices for growth, development and capital investments.
- Addresses equity, transportation, quality of life, economic development, jobs, upward mobility, affordable housing, health, safety, and sustainability.



## RELATIONSHIP TO OTHER PLANS

A Comprehensive Plan is overarching policy guidance and **connects with other plans for more detailed information.**

### Goals for Coordination:

- Leverage community engagement
- Use similar terms
- Seek connections in policies
- Coordinate plan schedules

### CURRENT, ONGOING AND PROPOSED PLANS

2030 Transit System Plan	Strategic Energy Action Plan	Water Supply Master Plan	Transportation Action Plan
Charlotte Walks	Envision My Ride	Vision Zero Action Plan	Housing Framework
Charlotte Bikes	Unified Development Ordinance	CONNECT Beyond	BEYOND 77
ALL-IN Center City 2040 Vision Plan	University City Vision Plan	Meck. Playbook	Tree Canopy Action plan
Charlotte Moves (Strategic Mobility Plan)	Food Systems Study	Comp. Storm Water Plan	Citywide Jobs Plan





## COMMUNITY ENGAGEMENT

- The public engagement process has been **robust, innovative, and inclusive.**
- The outreach focused on **access to information** and meeting people where they are.
- We listened to input from **groups representing all segments of Charlotte's** population.
- **Engaged people who traditionally have not been in the room during the planning process** – people of color, youths, non-English speaking residents, and those with lower incomes.





## What We Heard From the Community:

- Address **disparities and inequity** in access to basic daily household needs
- Ensure **all parts of Charlotte** are a part of future growth and a more **equitable distribution/allocation** of costs and benefits
- Help to **keep and create a variety of housing** that is attainable for all residents
- Focus a good portion of **growth in mixed use centers and along transportation corridors**
- Create **safer and more accessible transportation infrastructure** and options across the entire city
- Create **more places** that are accessible from neighborhoods that are **walkable and bikeable**
- Support **upward mobility** and improve **access to and diversity of employment options**, especially on east and west sides
- Think about creative **implementation tools and strategies**



# GUIDING PRINCIPLES & VISION ELEMENTS



OUR CITY. OUR PLAN. OUR FUTURE.



## 10 PLAN GOALS

- 01 10-MINUTE NEIGHBORHOODS
- 02 NEIGHBORHOOD DIVERSITY & INCLUSION
- 03 HOUSING ACCESS FOR ALL
- 04 TRANSIT- & TRAIL-ORIENTED DEVELOPMENT
- 05 SAFE & EQUITABLE MOBILITY
- 06 HEALTHY, SAFE, & ACTIVE COMMUNITIES
- 07 INTEGRATED NATURAL & BUILT ENVIRONMENTS
- 08 DIVERSE & RESILIENT ECONOMIC OPPORTUNITY
- 09 RETAIN OUR IDENTITY & CHARM
- 10 FISCALLY RESPONSIBLE





# CREATING COMPLETE COMMUNITIES

- **10 Place Types** are the building blocks of complete communities in Charlotte
- **Complete communities** provide diverse opportunities to work, live and play
- All areas of the community should have a combination of **work, live and play** places
- Each Place Type includes **recommendations** for land use, character, transportation, and natural resources
- Place Types will be further articulated and codified in **UDO**

<p><b>NEIGHBORHOOD I</b></p> <p>A mix of single family detached and townhomes with locally neighborhood scale amenities like schools and parks.</p>	<p><b>NEIGHBORHOOD 2</b></p> <p>A multi-family residential area that is walkable, transit-oriented, and has an emphasis on walkability and transit-oriented development. It includes multi-family, townhomes, and single-family attached units.</p>	<p><b>TOWN AND PREVIOUS</b></p> <p>Historic and traditional neighborhoods with a mix of single-family detached, townhomes, and multi-family units. It includes historic preservation and adaptive reuse.</p>
<p><b>NEIGHBORHOOD CENTER</b></p> <p>A neighborhood center that is walkable, transit-oriented, and has an emphasis on walkability and transit-oriented development. It includes multi-family, townhomes, and single-family attached units.</p>	<p><b>COMMUNITY ACTIVITY CENTER</b></p> <p>A community activity center that is walkable, transit-oriented, and has an emphasis on walkability and transit-oriented development. It includes multi-family, townhomes, and single-family attached units.</p>	<p><b>REGIONAL ACTIVITY CENTER</b></p> <p>A regional activity center that is walkable, transit-oriented, and has an emphasis on walkability and transit-oriented development. It includes multi-family, townhomes, and single-family attached units.</p>
<p><b>COMMERCIAL</b></p> <p>A commercial area that is walkable, transit-oriented, and has an emphasis on walkability and transit-oriented development. It includes multi-family, townhomes, and single-family attached units.</p>	<p><b>CAMPUS</b></p> <p>A campus area that is walkable, transit-oriented, and has an emphasis on walkability and transit-oriented development. It includes multi-family, townhomes, and single-family attached units.</p>	<p><b>INNOVATION MIXED-USE</b></p> <p>An innovation mixed-use area that is walkable, transit-oriented, and has an emphasis on walkability and transit-oriented development. It includes multi-family, townhomes, and single-family attached units.</p>
		<p><b>MANUFACTURING &amp; LOGISTICS</b></p> <p>A manufacturing and logistics area that is walkable, transit-oriented, and has an emphasis on walkability and transit-oriented development. It includes multi-family, townhomes, and single-family attached units.</p>



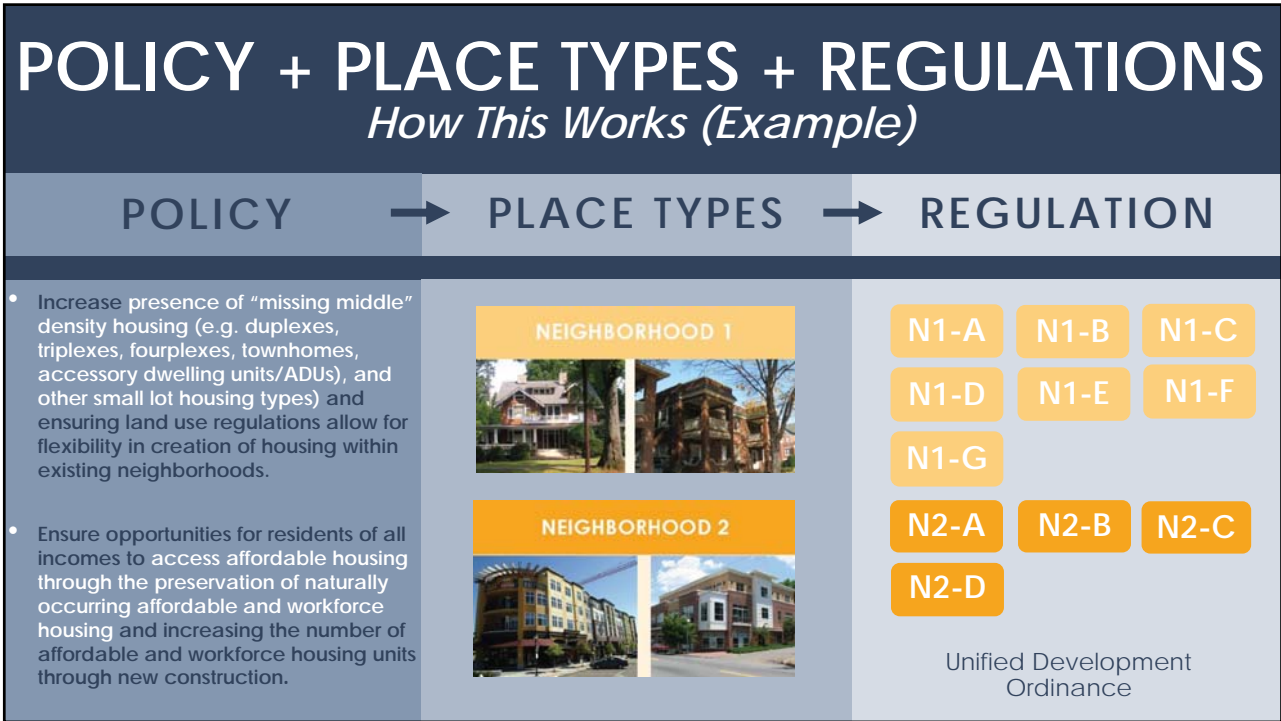
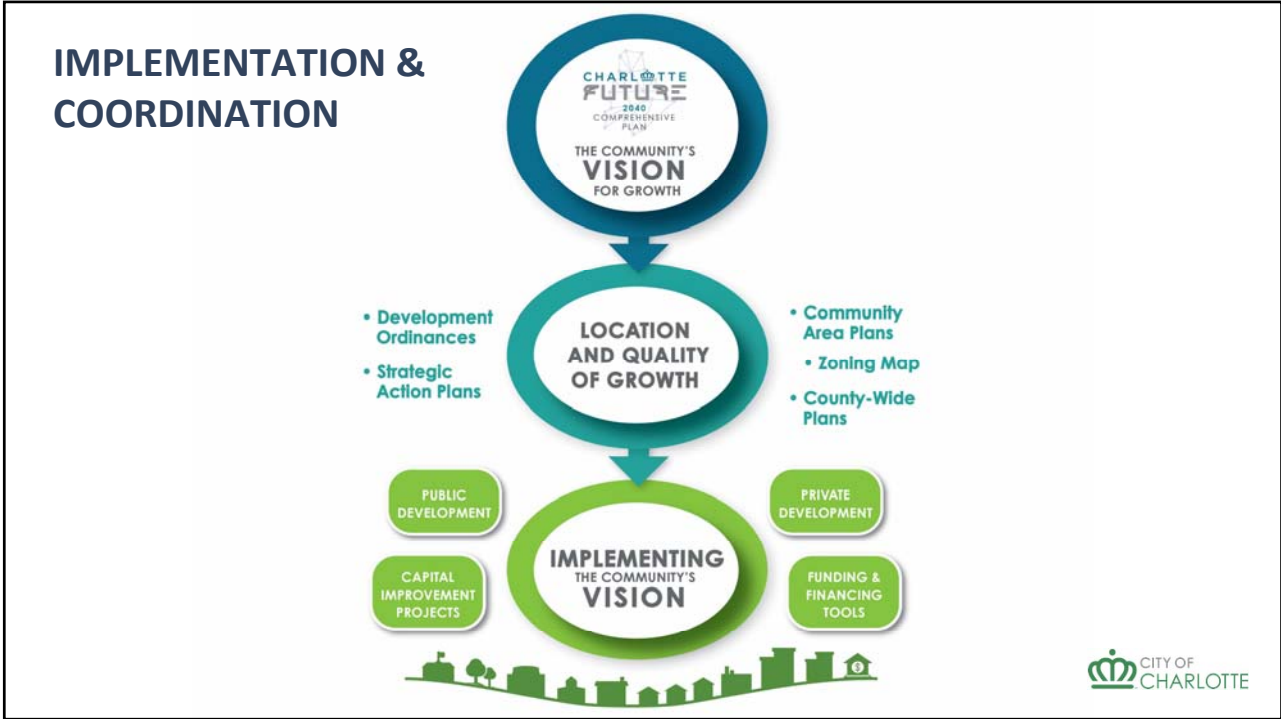
CITY OF CHARLOTTE

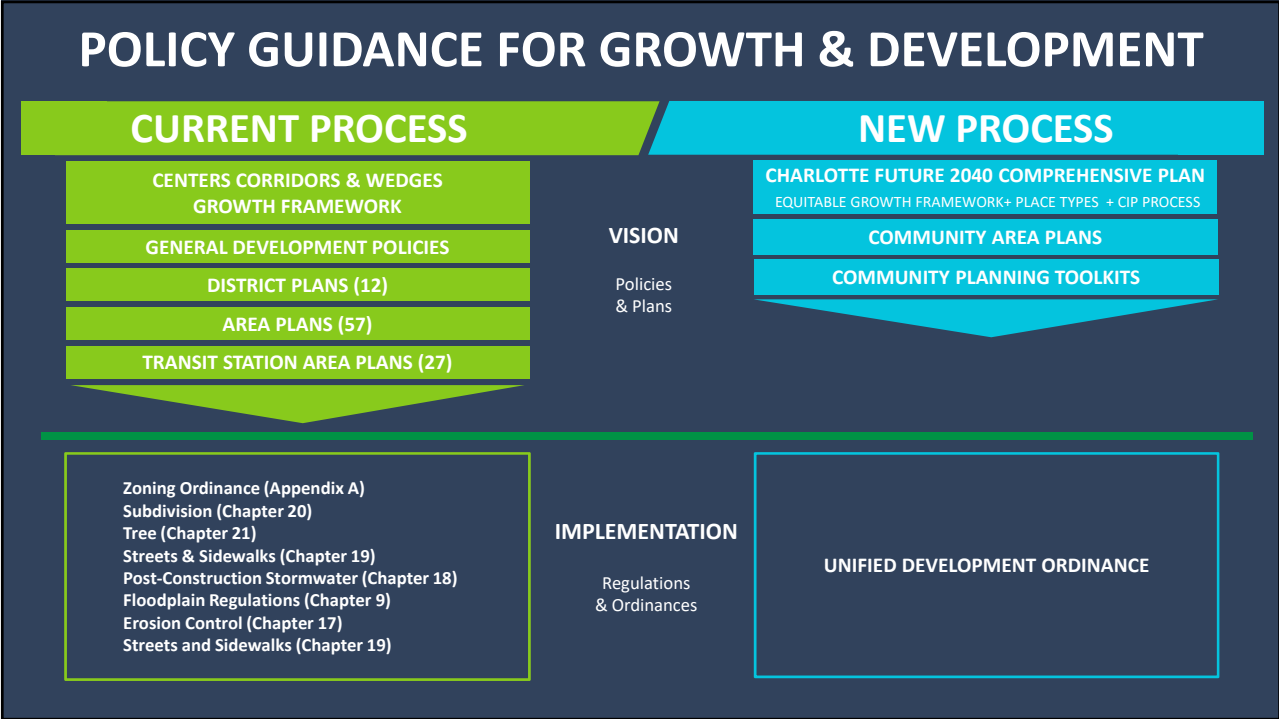


CHARLOTTE FUTURE | 2040 COMPREHENSIVE PLAN

## HOW DOES THE PLAN WORK?

CITY OF CHARLOTTE







**If You Are A Resident:**

- Transparency of planning process and predictability of development
- Updated policies, programs, and projects to address Charlottes' needs
- Support bringing affordable housing and essential goods and services within a 10-minute walk, bike, or transit ride

**If You Are a Developer:**

- Updated and refined development goals through Place Types
- Consistent development regulations
- Better definition of where uses are allowed
- Clarity of city priorities
- Predictability of development

**If You Are A Business Owner:**

- Clear understanding of investment strategy
- More flexibility for uses through place types
- Identify desired neighborhood businesses

**If You Are City Council:**

- Straightforward and easier-to-understand planning process
- Transparency and predictability of the process
- Fewer rezoning cases



CHARLOTTE  
FUTURE

2040  
COMPREHENSIVE  
PLAN

## WHAT HAPPENS AFTER PLAN ADOPTION?

CITY OF  
CHARLOTTE

## WHAT HAPPENS AFTER PLAN ADOPTION?

ACTIVITY	2021	2022	2023+
Define Community Planning Areas	█		
Map Future Place Types	█		
UDO Adoption*	█		
UDO Mapping		█	
Area Planning		█	█

*Note:*  
 North Carolina General Statutes, Section 160D  
 Effective January 1, 2021



CHARLOTTE  
**FUTURE** | 2040  
 COMPREHENSIVE  
 PLAN

## WHAT HAPPENS AFTER TODAY?



**CHARLOTTE FUTURE** | **2040 COMPREHENSIVE PLAN**  
**DRIVE-IN COMMUNITY MEETING**

Register at [2040drivein.eventbrite.com](https://2040drivein.eventbrite.com)

**CITY OF CHARLOTTE**

Join us for a Charlotte Future 2040 Comprehensive Plan workshop and family-friendly event to preview the draft plan.

**Date: Saturday, October 31, 2020**  
**Time: 2:00 – 9:00 PM**  
**Location: The Park Expo & Conference Center**  
**800 Briar Creek Road**  
**Charlotte, NC 28205**

# Charlotte Future City-Building Game

- **Partnerships**
  - Potions & Pixels
  - Knight Foundation
- **Design Concepts**
  - Game-first approach
  - Familiar with themes without opening the plan
  - Replayability
  - Independent play
  - Positive experience
- **Connects core concepts**
  - Policies = Place Types + Programs
- **Multi-media Approach**
  - Physical card game
  - Web version via Tabletopia
  - Mobile version on iOS and Android via Tabletopia App
- **Audience**
  - Families, youth, senior citizens, gamers, millennials, Gen Z




**CITY OF CHARLOTTE**

# Charlotte Future City-Building Game

## • October 7th

- Event sold out in 4 days (52 registered)
- Waiting list (16 people)

## • Scheduled Sessions

- Nov 18<sup>th</sup>
  - Dec 3<sup>rd</sup>
  - Dec 16<sup>th</sup>
  - More to come
- You can request a game night event by email  
[cltfuture2040@charlottenc.gov](mailto:cltfuture2040@charlottenc.gov)



<https://tabletopia.com/games/charlotte-future-city-building-game>



# THANK YOU!

# QUESTIONS?

**Project Website**

[www.charlottefuture.com/2040](http://www.charlottefuture.com/2040)

  @cltplanning



CHARLOTTE  
**FUTURE** | 2040  
 COMPREHENSIVE  
 PLAN

OUR CITY. OUR PLAN. OUR FUTURE.