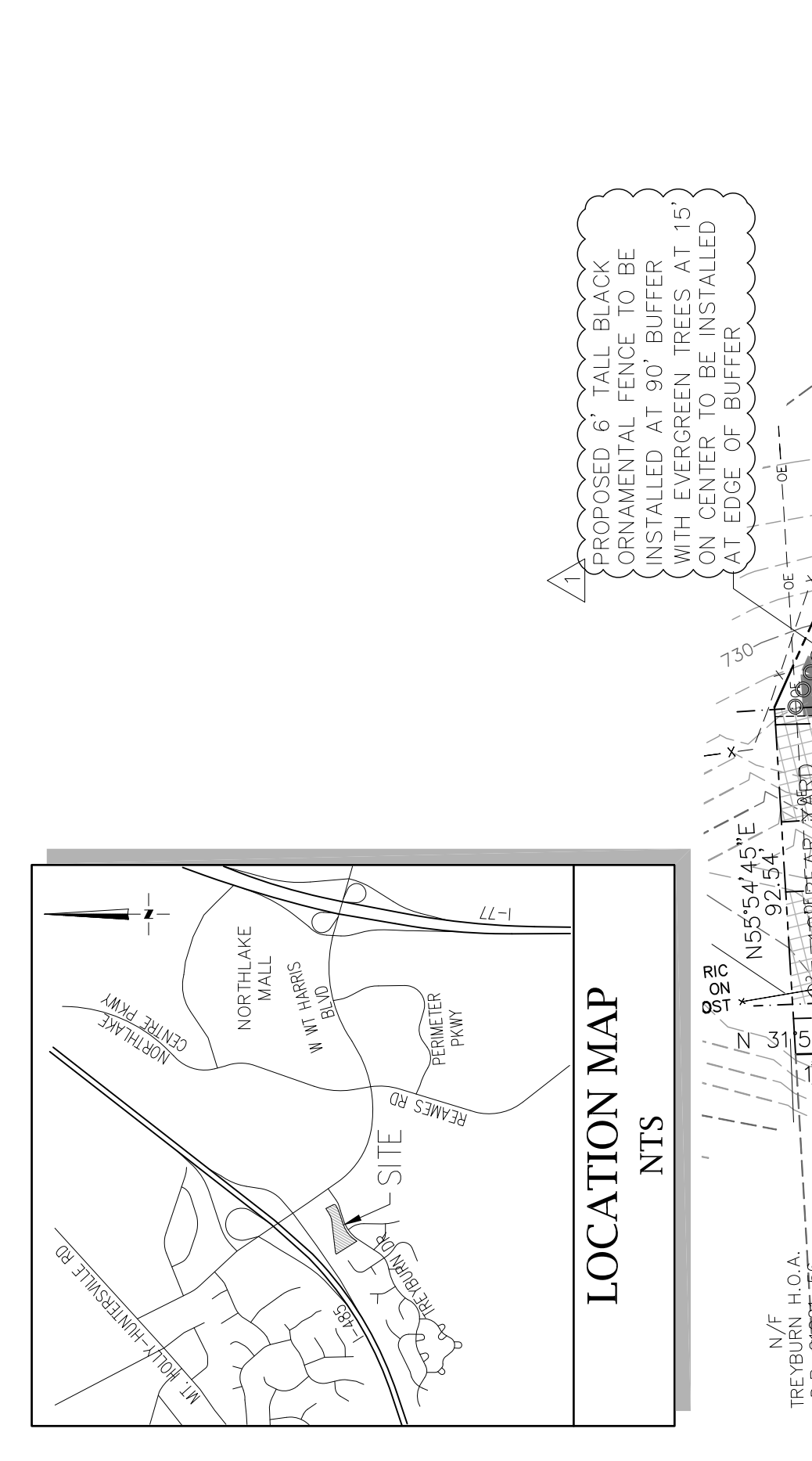
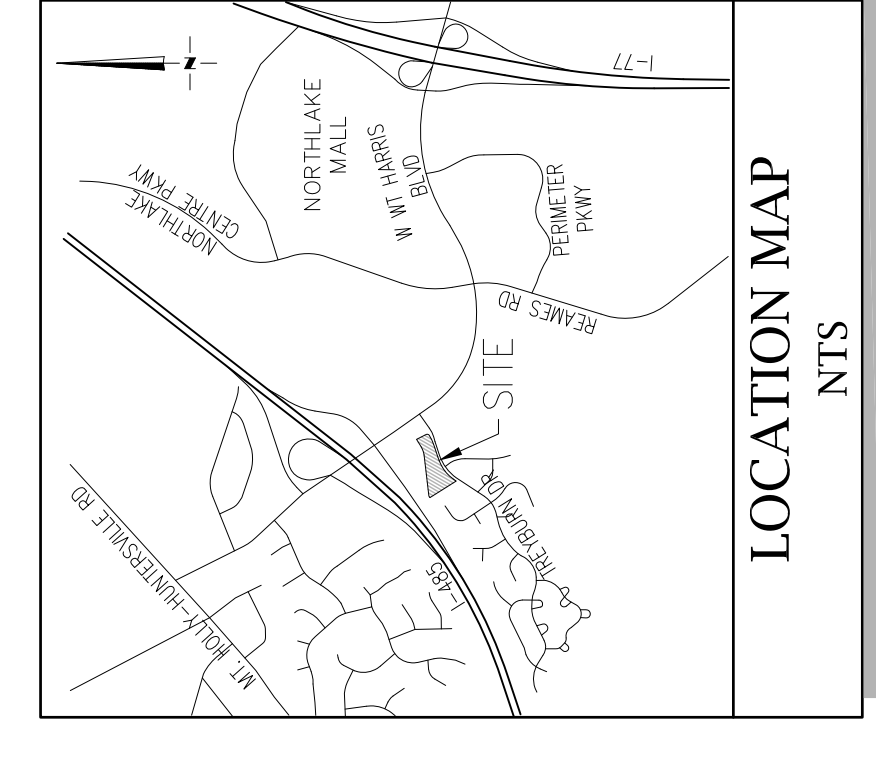
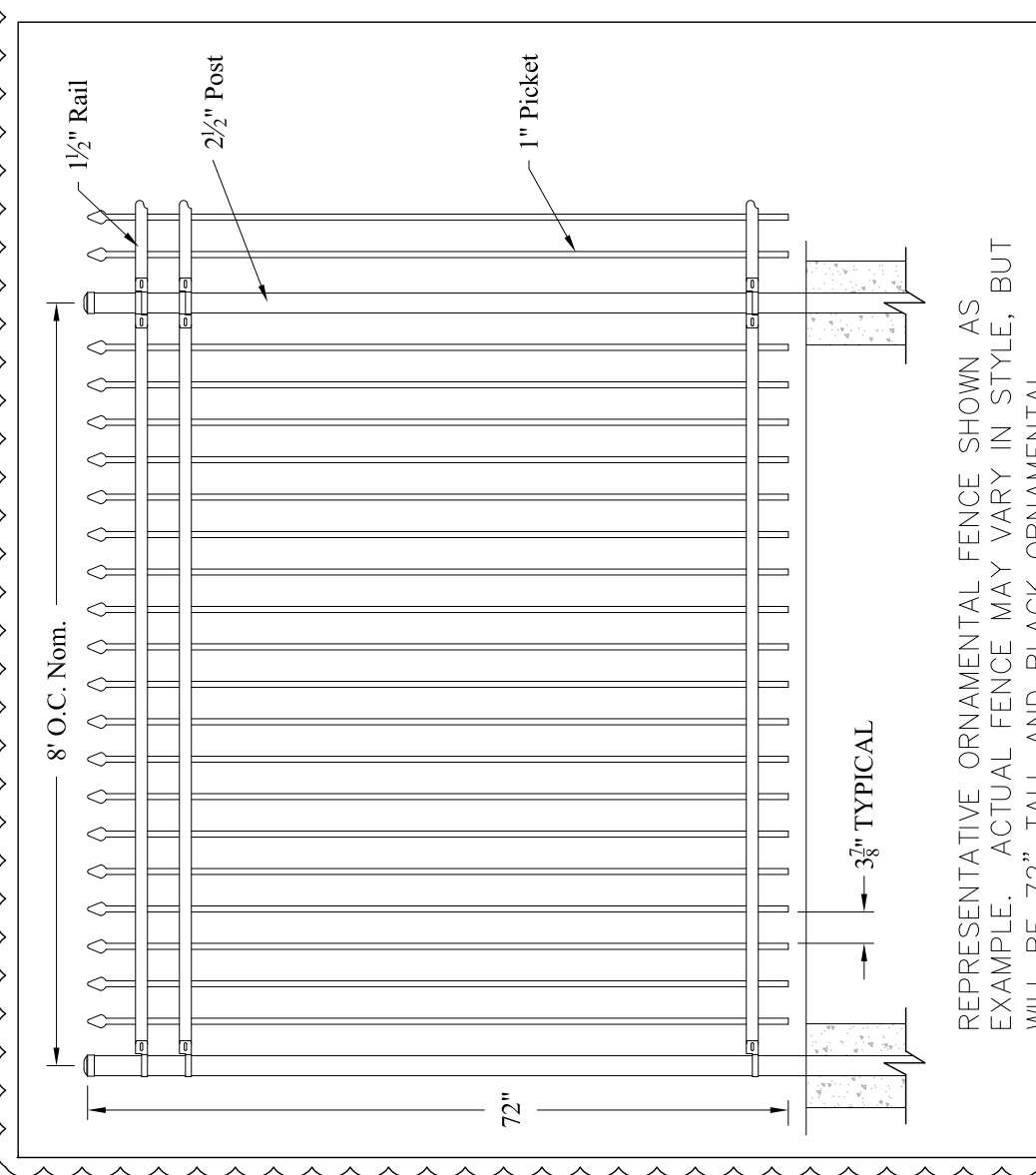
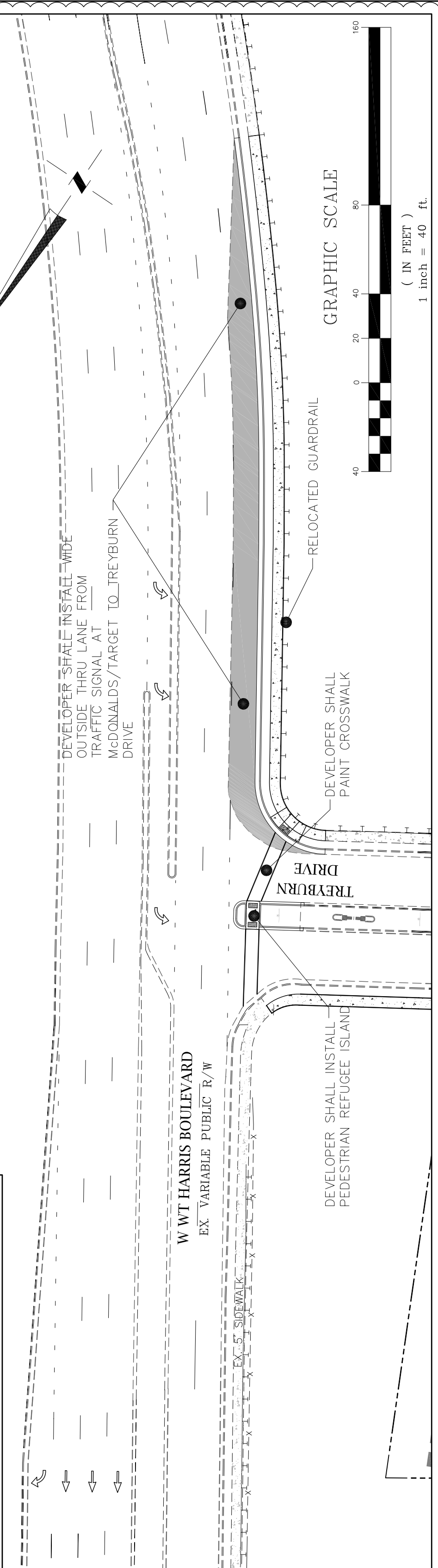


INTERSECTION IMPROVEMENTS



Mc²
ENGINEERING
 Mc² ENGINEERING, INC.
 2110 BEN CRAIG DR., STE. 400
 WILSON, NC 27157
 PHONE 704.910.9797

PROPOSED DEVELOPMENT:
HAMPTON INN & SUITES
AND FUTURE RESTAURANT

DEVELOPED BY:
INNKEEPER MOTOR
LODGE, INC.
 4741 SOUTH MAIN STREET
 WINSTON SALEM, NC 27127
 P: 336-788-9444

SCHEMATIC
SITE PLAN

REVISIONS	
1	2/17/17 REZONING COMMENTS

CAD FILE: 16-002 REZ.NDWG
 PROJECT NO.: 16-002
 DESIGNED BY: JDM
 DATE: MARCH 24, 2016

RZ1.0

FOR PUBLIC
HEARING
REZONING
PETITION 2016-077

