

# Trinity Episcopal School

Charlotte, NC

March/13/2017

**RZ-2**  
Conceptual Plan

Prepared for:  
Trinity Episcopal School  
750 E. 9th St.  
Charlotte, NC 28202  
Petition #: 2017-004  
Project #: 16-176

Prepared by:



LANDSCAPE ARCHITECTURE  
CIVIL ENGINEERING  
LAND PLANNING  
601 N. TRADE STREET, SUITE 200  
WINSTON-SALEM, NC 27101  
www.stimmelpa.com 336.723.1067







Existing Front Entrance



Existing Front Entrance



Existing McDowell St. Elevation



Preliminary Image from McDowell and 8th

# Trinity Episcopal School

Charlotte, NC

March/13/2017

RZ-3

*Illustrative/Conceptual Elevations*

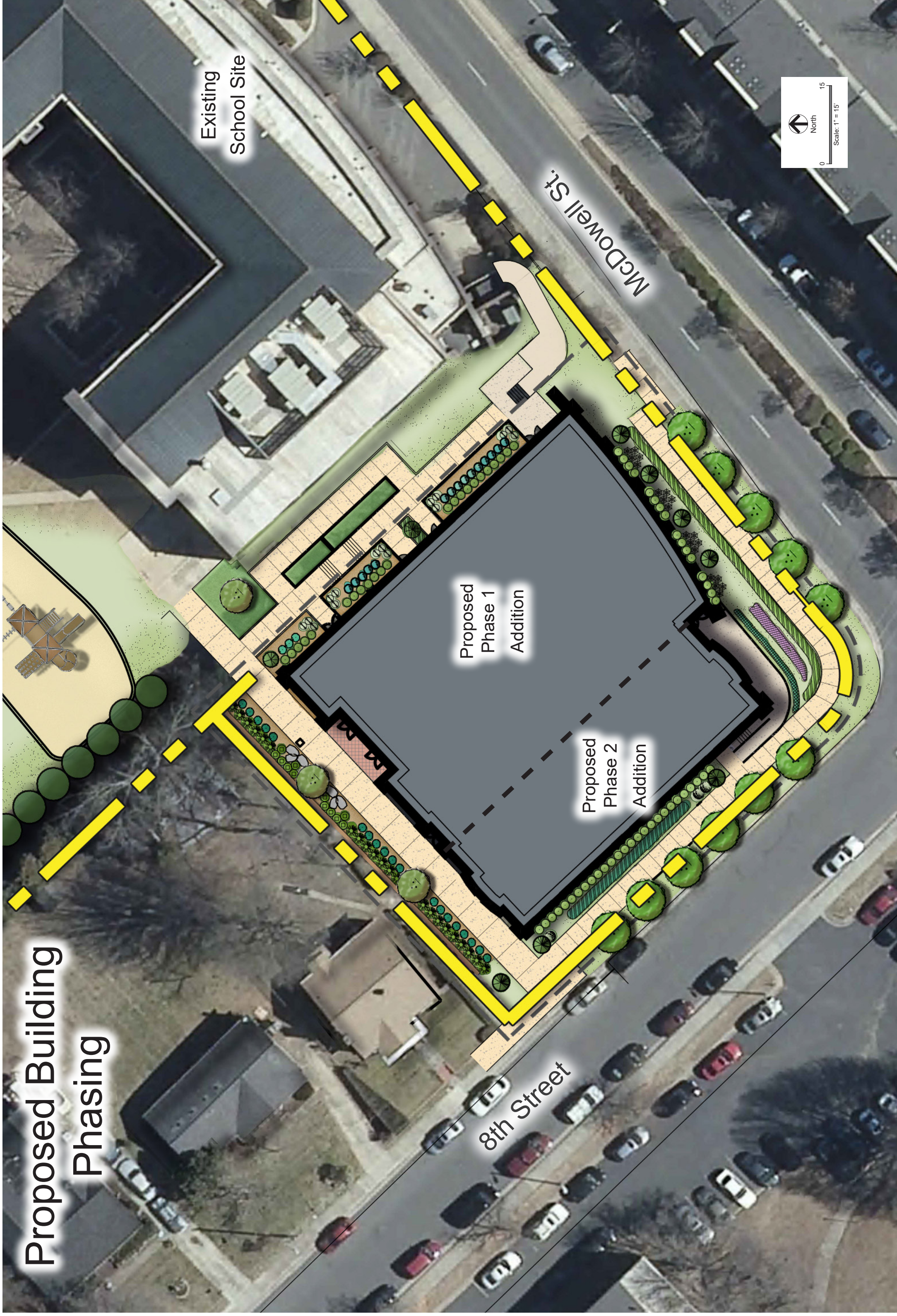
Prepared for:  
Trinity Episcopal School  
750 E. 9th St.  
Charlotte, NC 28202  
Petition #: 2017-004  
Project #: 16-176

Prepared by:



LANDSCAPE ARCHITECTURE  
CIVIL ENGINEERING  
LAND PLANNING  
601 N. TRADE STREET, SUITE 200  
WINSTON-SALEM, NC 27101  
www.stimmelpa.com 336.723.1067





Proposed Building Phasing

# Trinity Episcopal School

Charlotte, NC March/13/2017

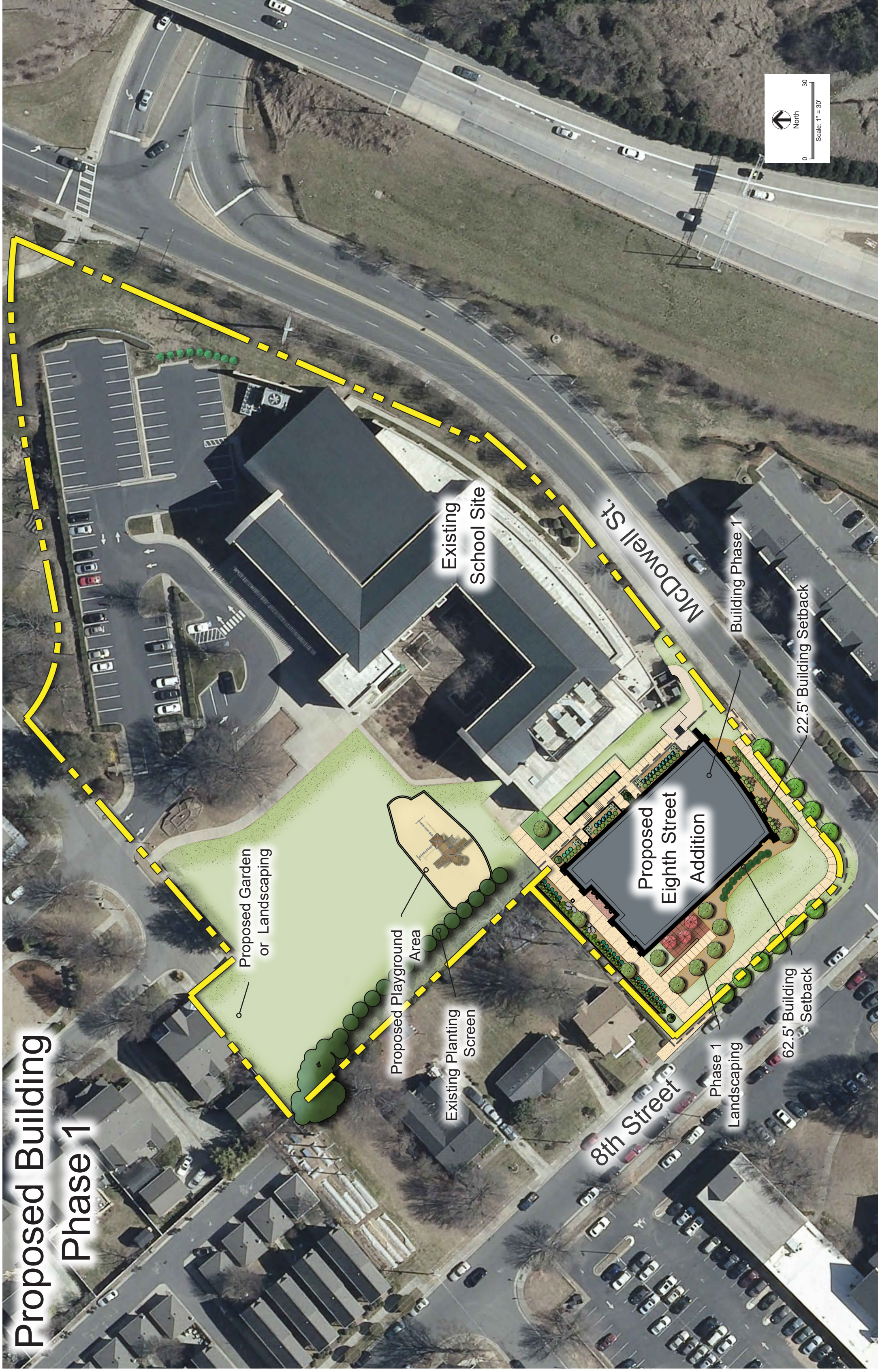
**RZ-4**  
Building Phasing Plan

Prepared for:  
Trinity Episcopal School  
750 E. 9th St.  
Charlotte, NC 28202  
Petition #: 2017-004  
Project #: 16-176

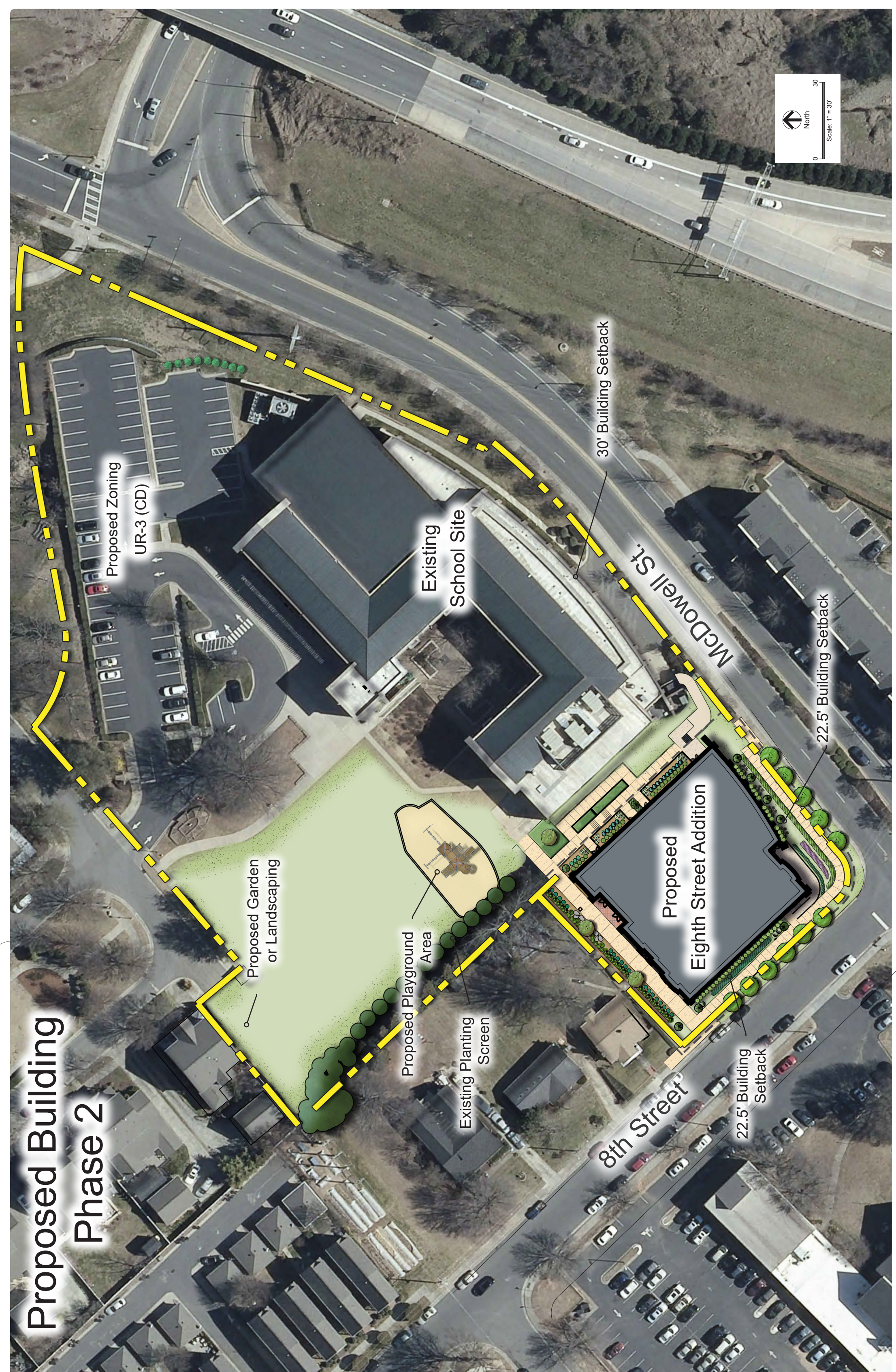
Prepared by:



LANDSCAPE ARCHITECTURE  
CIVIL ENGINEERING  
LAND PLANNING  
601 N. TRADE STREET, SUITE 200  
WINSTON-SALEM, NC 27101  
www.stimmelpa.com 336.723.1067



Proposed Building Phase 1



Proposed Building Phase 2