



BOHLER ENGINEERING, PC, PLLC
 CIVIL AND CONSTRUCTION ENGINEERING
 LAND SURVEYING PROGRAM MANAGEMENT LANDSCAPE ARCHITECTURE
 SUSTAINABLE DESIGN PERMITTING SERVICES TRANSPORTATION SERVICES

- UPSTATE NEW YORK
- LEHIGH VALLEY, PA
- SCHEFFERTON, PA
- REHOBOTH BEACH, DE
- ATLANTA, GA
- CHARLOTTE, NC
- RALEIGH, NC
- SOUTH FLORIDA
- CENTRAL VIRGINIA
- PHILADELPHIA, PA
- NEW JERSEY
- NEW YORK, NY
- NEW YORK METRO
- BALTIMORE, MD
- NORTHERN VIRGINIA
- WASHINGTON, DC

THE INFORMATION ON THIS PLAN WAS OBTAINED FROM THE FIELD AND IS BELIEVED TO BE TRUE AND ACCURATE TO THE BEST OF OUR KNOWLEDGE AND BELIEF. WE MAKE NO WARRANTY, EXPRESS OR IMPLIED, AS TO THE ACCURACY OF THE INFORMATION OR THE RESULTS OF ANY SERVICE PROVIDED BY US OR OUR EMPLOYEES OR AGENTS. THIS PLAN IS THE PROPERTY OF BOHLER ENGINEERING, PC, PLLC AND IS NOT TO BE REPRODUCED, COPIED, OR TRANSMITTED IN ANY FORM OR BY ANY MEANS, ELECTRONIC OR MECHANICAL, INCLUDING PHOTOCOPYING, RECORDING, OR BY ANY INFORMATION STORAGE AND RETRIEVAL SYSTEM, WITHOUT THE WRITTEN PERMISSION OF BOHLER ENGINEERING, PC, PLLC.

REV#	DATE	COMMENT	BY
1	12/18/16	PER STAFF COMMENTS	GPP
2	1/23/17	PER STAFF COMMENTS	GPP
3	2/20/17	PER STAFF COMMENTS	GPP
4	3/27/17	PER STAFF COMMENTS	GPP

NOT APPROVED FOR CONSTRUCTION

PROJECT NO: NCC152009
 DRAWN BY: PAK
 CHECKED BY: GPP
 DATE: 10/24/16
 SCALE: 1" = 60'
 CAD ID: RZ

PROJECT: **COMMERCIAL REZONING PLAN**
 FOR: **SELWYN PROPERTY GROUP**

BOHLER ENGINEERING, PC, PLLC
 1927 S. TRYON STREET, SUITE 310
 CHARLOTTE, NC 28203
 Phone: (800) 272-3400
 Fax: (800) 272-3401
 NC@BohlerEng.com

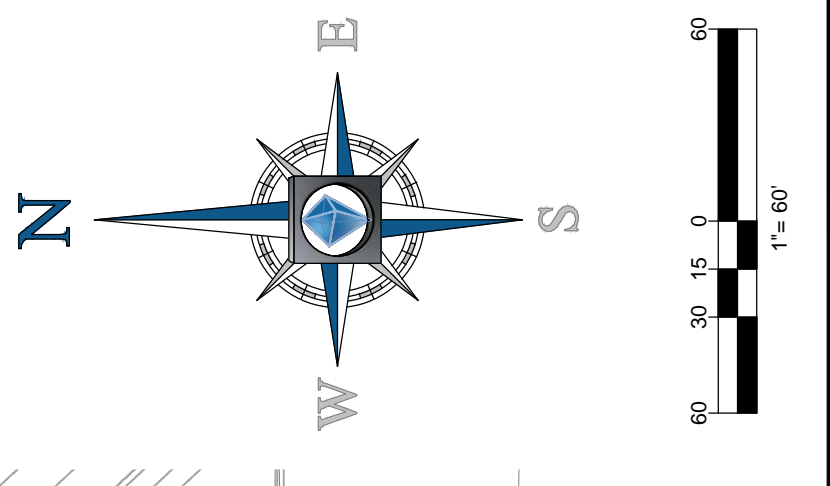
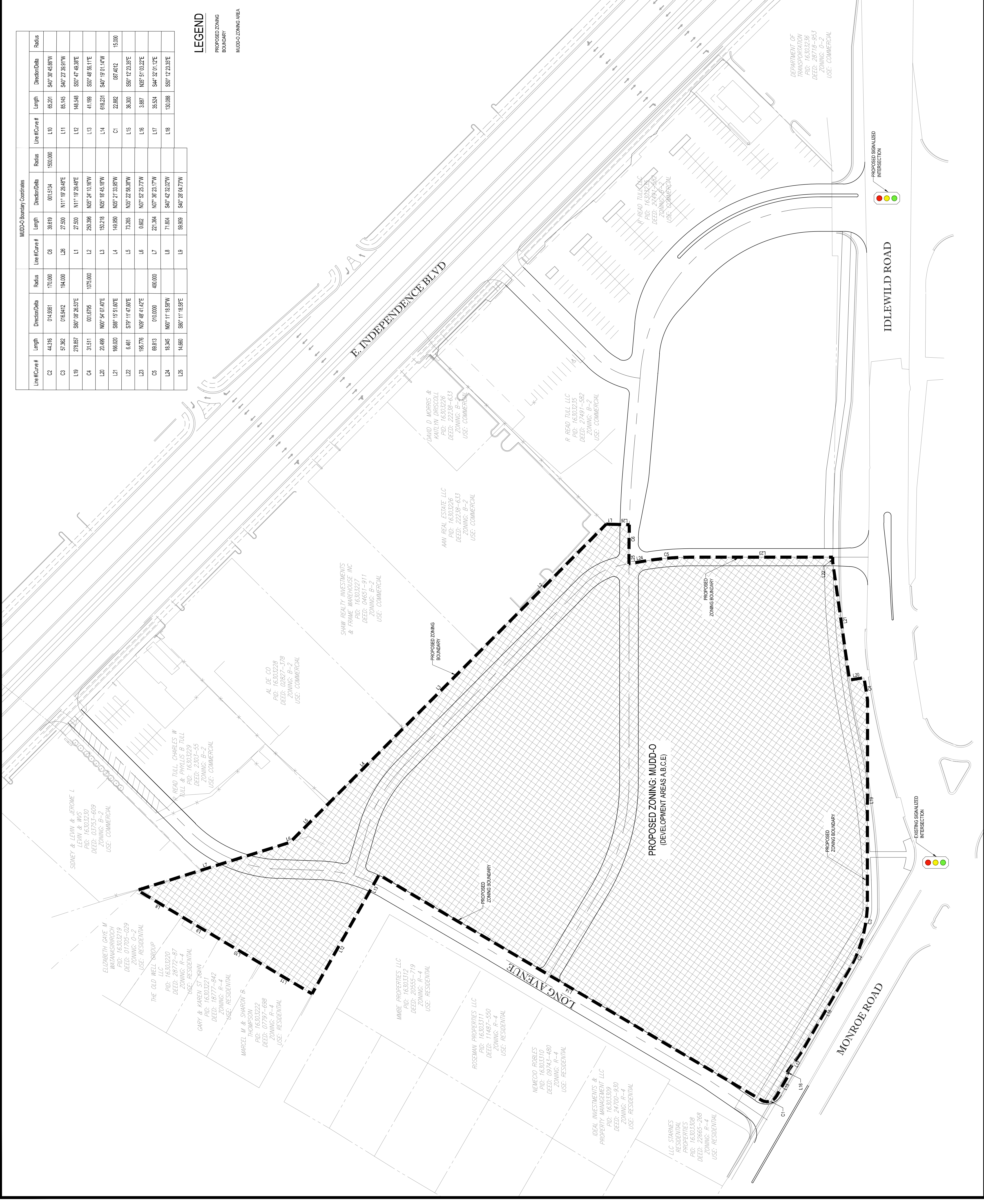
SunCap PROPERTY GROUP

SHEET TITLE: **MUDD-O ZONING AREA**
 SHEET NUMBER: **RZ-3**



LEGEND
 PROPOSED ZONING BOUNDARY
 MUDD-O ZONING AREA

Line #/Curve #	Length	Direction/Date	Radius	Line #/Curve #	Length	Direction/Date	Radius
C2	44.16	014.881°	170.000	C6	39.619	001.514°	1500.000
C3	57.982	018.942°	194.000	L5	27.500	N11°19'28.48"E	
L9	278.857	S89°08'28.53"E		L1	27.500	N11°19'28.48"E	
C4	31.511	001.695°	1075.000	L2	250.396	N65°24'10.16"W	
L20	20.189	N00°54'07.40"E		L3	150.218	N65°18'45.18"W	
L21	166.020	S88°15'51.66"E		L4	149.950	N65°17'33.95"W	
L22	6.461	S79°11'47.66"E		L5	73.285	N65°17'28.38"W	
L23	195.178	N09°48'41.47"E		L6	0.602	N07°42'25.73"W	
C5	69.813	010.000°	400.000	L7	21.384	N07°42'25.73"W	
L24	18.945	N00°11'18.95"W		L8	71.894	S40°42'32.07"W	
L25	14.660	S80°11'18.95"E		L9	59.939	S40°28'04.73"W	





SITE CIVIL AND CONSTRUCTION ENGINEERING
 LAND SURVEYING PROGRAM MANAGEMENT LANDSCAPE ARCHITECTURE
 SUSTAINABLE DESIGN PERMITTING SERVICES TRANSPORTATION SERVICES

- ◆ UPRSTATE NEW YORK
- ◆ SCOUTSBURGH, PA
- ◆ LEHIGH VALLEY, PA
- ◆ CHARLOTTE, NC
- ◆ RALEIGH, NC
- ◆ TAMPA, FL
- ◆ ATLANTA, GA
- ◆ SOUTH FLORIDA
- ◆ PHILADELPHIA, PA
- ◆ CENTRAL VIRGINIA
- ◆ NEW JERSEY
- ◆ NEW YORK, NY
- ◆ NEW YORK METRO
- ◆ BALTIMORE, MD
- ◆ NORTHERN VIRGINIA
- ◆ SCOTTSDALE, AZ
- ◆ REHOBOTH BEACH, DE
- ◆ NEW ENGLAND
- ◆ COSTON, MA

REV#	DATE	COMMENT	BY
1	12/18/16	PER STAFF COMMENTS	GPP
2	1/23/17	PER STAFF COMMENTS	GPP
3	2/20/17	PER STAFF COMMENTS	GPP
4	3/27/17	PER STAFF COMMENTS	GPP

NOT APPROVED FOR CONSTRUCTION

PROJECT NO: NCC162009
 DRAWN BY: PMK
 CHECKED BY: GPP
 SCALE: 1/8" = 1'-0"
 CAD ID: RZ

PROJECT: **COMMERCIAL REZONING PLAN**
 FOR: **SELWYN PROPERTY GROUP**

BOHLER ENGINEERING, NC, PLLC
 1927 S. TRYON STREET, SUITE 310
 CHARLOTTE, NC 28203
 Phone: (800) 272-3400
 Fax: (800) 272-3401
 NCBohlerEng.com

SunCap PROPERTY GROUP

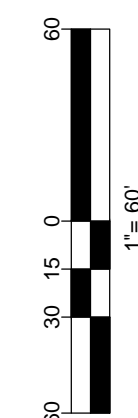
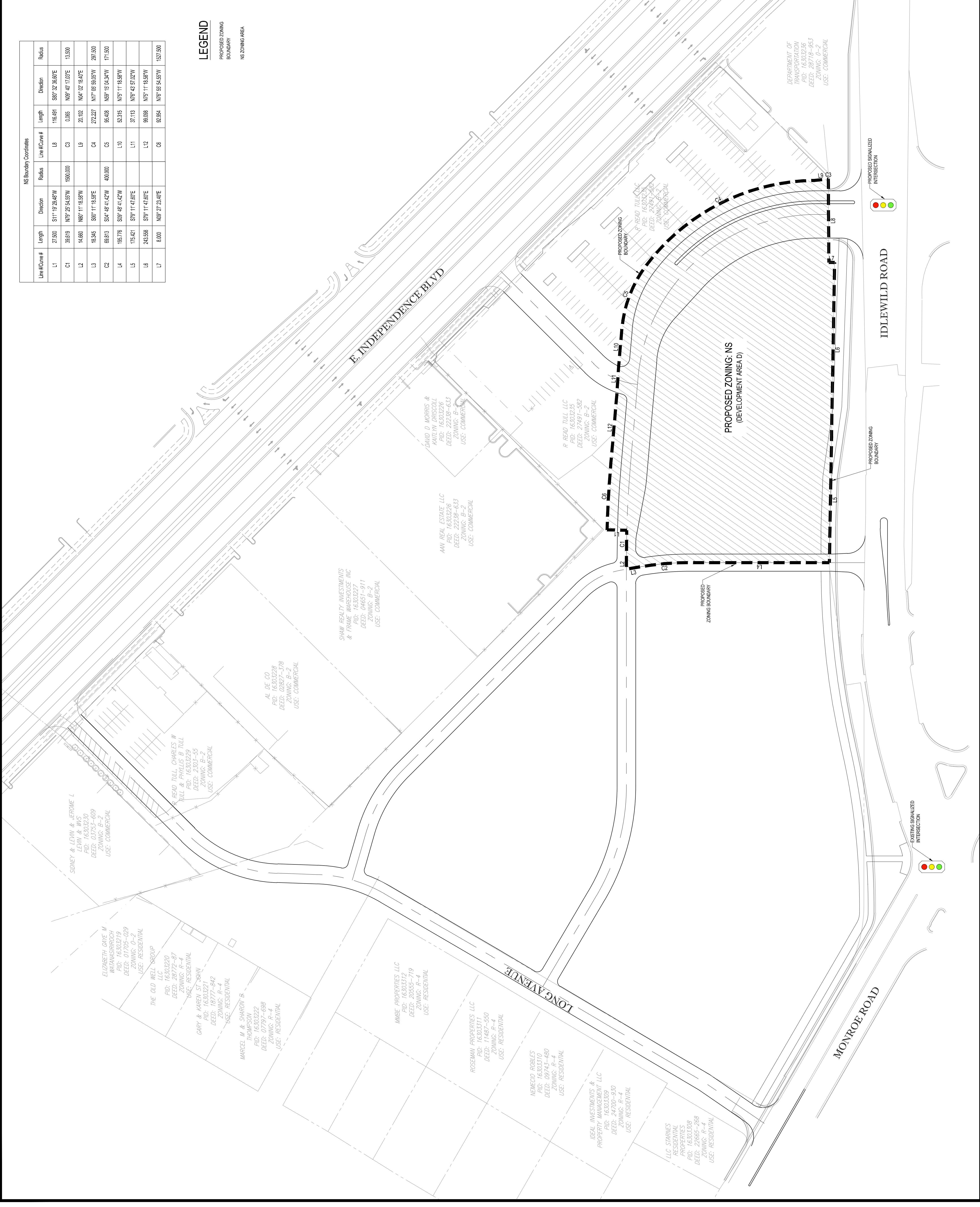
SHEET TITLE: **NS ZONING AREA**
 SHEET NUMBER: **RZ-4**



LEGEND

PROPOSED ZONING BOUNDARY
 NS ZONING AREA

Line #/Curve #	Length	Direction	Radius	Line #/Curve #	Length	Direction	Radius
L1	27.500	S11°19'28.85"W		L8	116.691	S89°32'36.80"E	
C1	39.619	N79°25'54.55"W	190.000	C3	0.065	N89°40'17.03"E	13.500
L2	14.660	N69°11'16.95"W		L9	21.102	N04°02'16.40"E	
L3	18.345	S00°11'16.95"E		C4	272.227	N17°05'59.05"W	207.500
C2	89.813	S04°48'14.27"W	400.000	C5	95.408	N59°06'04.34"W	171.500
L4	165.776	S89°48'14.27"W		L10	53.215	N75°11'16.95"W	
L5	175.421	S79°11'47.80"E		L11	37.113	N76°49'57.02"W	
L6	243.599	S79°11'47.80"E		L12	96.088	N75°11'16.95"W	
L7	8.000	N89°27'24.40"E		C6	92.954	N76°56'54.55"W	157.500



BOHLER ENGINEERING NC, PLLC

SITE CIVIL AND CONSULTING ENGINEERING
LAND SURVEYING PROGRAM MANAGEMENT LANDSCAPE ARCHITECTURE
SUSTAINABLE DESIGN PERMITTING SERVICES TRANSPORTATION SERVICES

PHILADELPHIA, PA
CENTRAL VIRGINIA
NORTH CAROLINA
NEW JERSEY
NORTH HAVEN, CT
NEW YORK, NY
NEW YORK METRO
ROCKY HILL, CT
SOUTH AFRICA
SOUTH KOREA
UPSTATE NEW YORK
NEW HAMPSHIRE
NEW MEXICO
NORTHERN MARYLAND
BALTIMORE, MD
REHOBOTH BEACH, DE
CHARLOTTE, NC
LEHIGH VALLEY, PA
HARTFORD, CT
CONCORD, MA

PHILADELPHIA, PA
TAMPA, FL
ATLANTA, GA
CHARLOTTE, NC
RALEIGH, NC

REV	DATE	BY	COMMENT
1	12/19/16		PER STAFF COMMENTS GPP
2	12/31/17		PER STAFF COMMENTS GPP
3	2/21/17		PER CLIENT COMMENTS GPP
4	2/20/17		PER STAFF COMMENTS GPP
5	3/27/17		PER STAFF COMMENTS GPP

NOT APPROVED FOR CONSTRUCTION

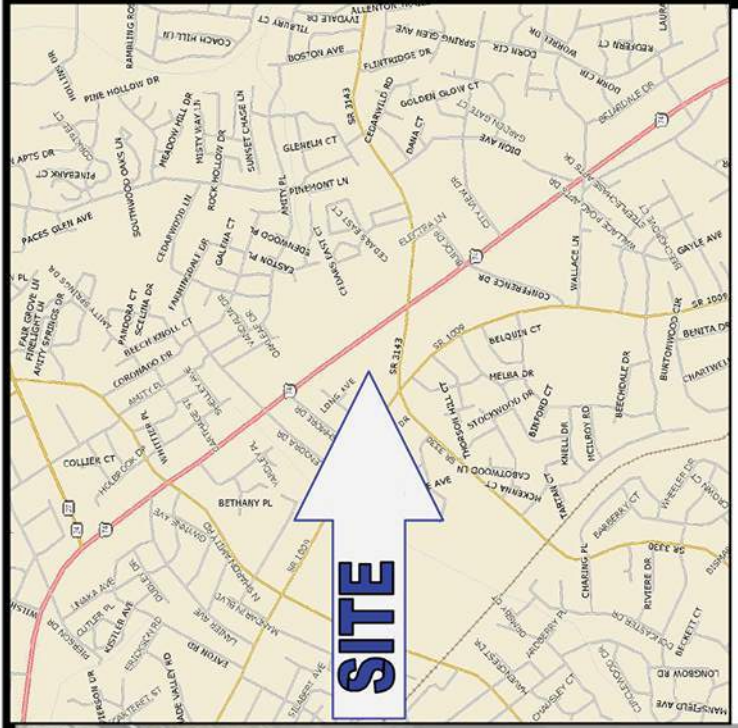
PROJECT NO.: NCT162098
CHECKED BY: [Signature]
DATE: 10/24/16
SCALE: 1" = 60'
CADD: RZ

PROJECT: COMMERCIAL REZONING PLAN FOR SELWYN PROPERTY GROUP

BOHLER ENGINEERING NC, PLLC
1927 S. TRYON STREET, SUITE 310
CHARLOTTE, NC 28203
Tel: (704) 366-1100
Fax: (800) 272-3401
NC@BohlerEng.com

SunCap PROPERTY GROUP

SHEET TITLE: SCHEMATIC SITE PLAN
SHEET NUMBER: RZ-5



NOTE: THIS IS SCHEMATIC IN NATURE AND SUBJECT TO FUTURE DESIGN MODIFICATION AND REFINEMENTS AS DESCRIBED WITHIN SECTION 1 OF THE DEVELOPMENT STANDARDS.

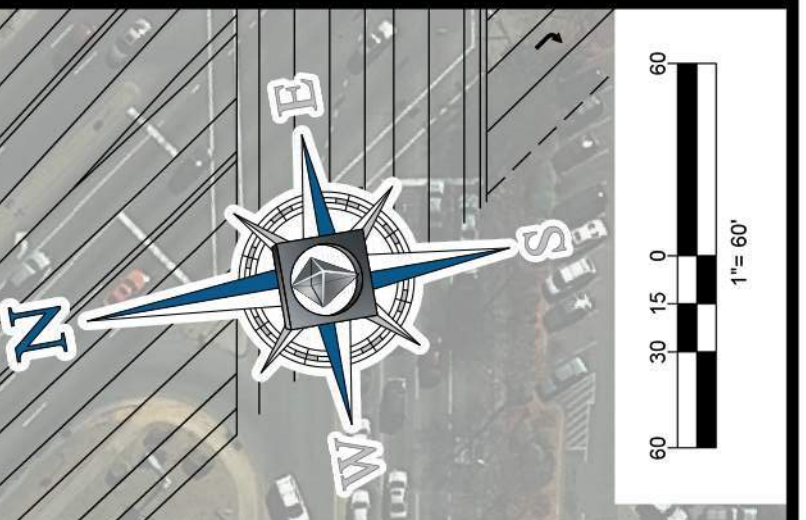


PHOTO COURTESY OF SUNCAP PROPERTY GROUP. SCHEMATIC SITE PLAN PREPARED BY BOHLER ENGINEERING NC, PLLC. ALL RIGHTS RESERVED BY BOHLER ENGINEERING NC, PLLC.

BOHLER ENGINEERING NC, PLLC

SITE CIVIL AND CONSULTING ENGINEERING
 LAND SURVEYING PROGRAM MANAGEMENT LANDSCAPE ARCHITECTURE
 SUSTAINABLE DESIGN PERMITTING SERVICES TRANSPORTATION SERVICES

LEON WALTER, P.E.
 NEW YORK, NY
 SOUTH EASTERN, PA
 SOUTH EASTERN, DE
 BALTIMORE, MD
 NEW YORK, NY
 CENTRAL, VA
 PHILADELPHIA, PA

RALEIGH, NC
 CHARLOTTE, NC
 TAMPA, FL
 ATLANTA, GA
 SOUTH FLORIDA

THESE SERVICES ARE PROVIDED BY BOHLER ENGINEERING NC, PLLC. THE FIRM IS NOT RESPONSIBLE FOR THE DESIGN OF ANY STRUCTURE OR ANY OTHER WORK NOT AUTHORIZED BY THE ENGINEER. ONLY APPROVED WORK SHALL BE CONSIDERED AS THE WORK OF BOHLER ENGINEERING.

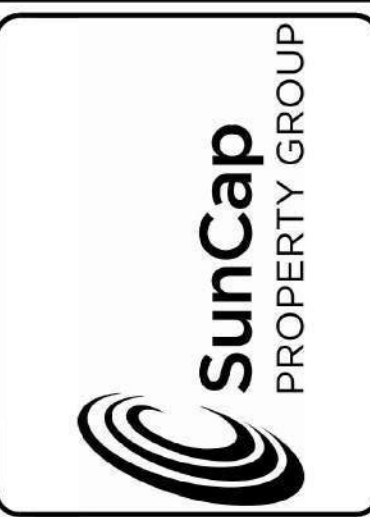
REV	DATE	BY	COMMENT
1	12/18/16	GPP	PER STAFF COMMENTS
2	1/23/17	GPP	PER STAFF COMMENTS
3	2/28/17	GPP	PER STAFF COMMENTS
4	3/27/17	GPP	PER STAFF COMMENTS

NOT APPROVED FOR CONSTRUCTION

PROJECT NO: NC150206
 DRAWN BY: GPP
 CHECKED BY: 12/18/16
 SCALE: RZ
 CAD ID: RZ

PROJECT: **COMMERCIAL REZONING PLAN**
 FOR **SELWYN PROPERTY GROUP**
 LOCATION OF SITE

BOHLER ENGINEERING NC, PLLC
 1977 S. TRYON STREET, SUITE 310
 CHARLOTTE, NC 28203
 Phone: (880) 272-3400
 Fax: (880) 272-3401
 NC@BohlerEng.com



SHEET TITLE: **CONCEPTUAL RENDERING**

SHEET NUMBER: **RZ-6**



This perspective rendering is included to reflect the location of buildings, with the exception of the building and the street, and open space that may be constructed on the Site (the actual buildings constructed on the Site may vary from these illustrations provided that the design intent is preserved. The use of colors (red hues) that are typically associated with brick materials on the attached elevations does not imply that the material is a brick material.